

Supplementary Materials

***SPON1* can Reduce Amyloid Beta and Reverse Cognitive Impairment and Memory Dysfunction in Alzheimer's Disease Mouse Model.**

Soo Yong Park¹, **Joo Yeong Kang**¹, **Taehee Lee**¹, **Donggyu Nam**¹, **Chang-Jin Jeon**² and **Jeong Beom Kim**^{1,*}

¹ Stem Cell Research Center, School of Life Sciences, Ulsan National Institute of Science and Technology (UNIST), 44919 Ulsan, South Korea; shorypark@unist.ac.kr (S.Y.P.); kangj0594@unist.ac.kr (J.Y.K.); thlee525@hotmail.com (T.L.); namdongg@unist.ac.kr (D.N.)

² Neuroscience Laboratory, Department of Biology, College of Natural Sciences, Kyungpook National University, 41566, Daegu, South Korea; cjeon@knu.ac.kr

* Correspondence: jbkim@unist.ac.kr; Tel: +82 (52) 217 5272

name	sequence
exo-Spon1 forward	5'-CCAAACTGTGCGGAGGTGG-3'
exo-Spon1 reverse	5'-AGGTAGCGGTGAGTTCAGGC-3'
exo-Reelin/spondin forward	5'-GGGATGCTGGCACTGACAG-3'
exo-Reelin/spondin reverse	5'-AGGTAGCGGTGAGTTCAGGC-3'
endo-Spon1 forward	5'-CGTCACTTGGAGCAGGAGTG-3'
endo-Spon1 reverse	5'-CCCTCCGACTTGGTCACTTT-3'
Gapdh qRT forward	5'-TGCCCCCATGTTTGTGAT-3'
Gapdh qRT reverse	5'- TGTGGTCATGAGCCCTTC-3'
Sox2 forward	5'-TAGAGCTAGACTCCGGGCGATGA-3'
Sox2 reverse	5'-TTGCCTTAAACAAGACCACGAAA-3'
Nestin forward	5'-TTGACCTGTGGTATCTCTCGTG-3'
Nestin reverse	5'-GAGTCACTCATCATTGCTGCTC-3'
Pax6 forward	5'-GCTTCATCCGAGTCTTCTCCGTTAG-3'
Pax6 reverse	5'-CCATCTTTGCTTGGGAAATCCG-3'
Olig2 forward	5'-CAGAGCACTGCACTTGACTTCT-3'
Olig2 reverse	5'-CACACTTCTGAGACCACAGGAC-3'
Gapdh forward	5'-ACGACCCCTTCATTGACCTCAACT-3'
Gapdh reverse	5'-ATATTTCTCGTGGTTCACACCCAT-3'

Antibody	Application	Host species	Company	Catalog number
Nestin	1:400 (ICC)	Mouse	Millipore	MAB353
Sox2	1:200 (ICC)	Goat	SantaCruz	sc-17320
V5	1:200 (ICC) 1:1000 (WB)	Goat	abcam	ab95038
A β	1:1000 (WB)	Mouse	Novus	NBP2-13075
HSC-70	1:1000 (WB)	Rabbit	abcam	ab137806

*ICC: immunocytochemistry, WB: western blot

Day	Trial 1	Trial 2	Trial 3	Trial 4
1	N	E	SE	NW
2	SE	N	NW	E
3	NW	SE	E	N
4	E	NW	N	SE
5	N	SE	E	NW
6 (probe trial)	NE			

N: North, E: East, SE: South East, NW: North West, NE: North East.

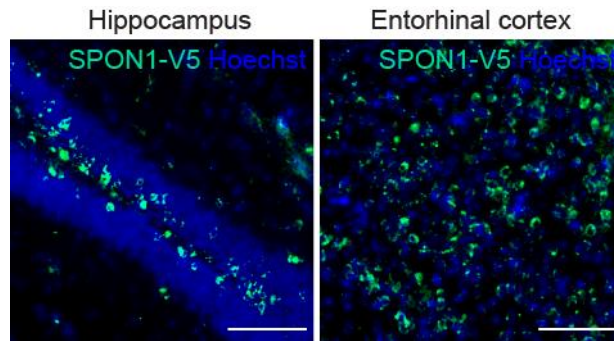


Figure S1. Immunofluorescence images of ectopic expression of human SPON1 in injected sites hippocampus (left panel) and entorhinal cortex (right panel). Anti-V5 antibody was used to detect V5-tagged SPON1. Scale bar: 100 μ m.