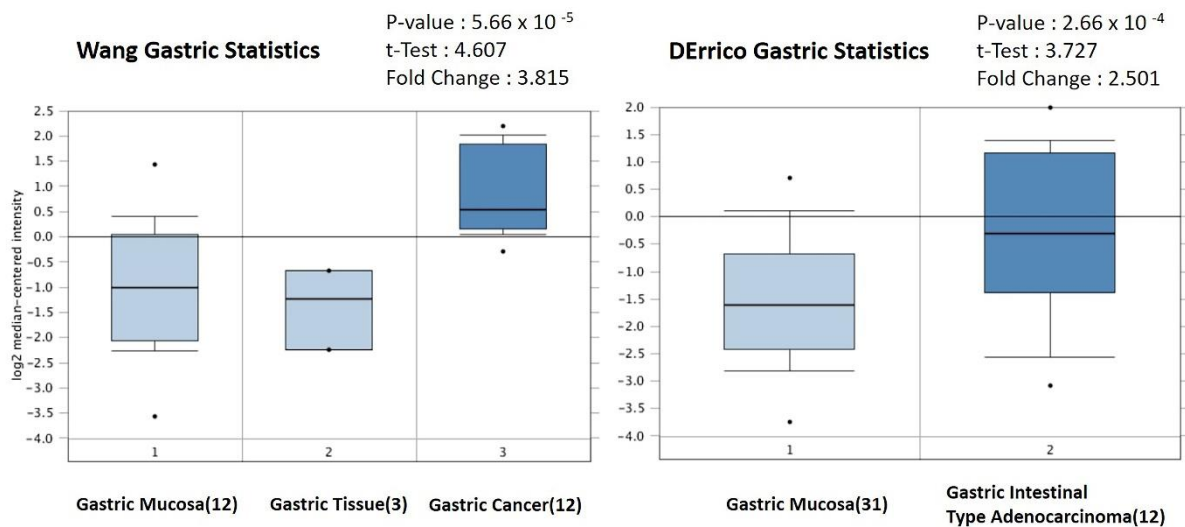
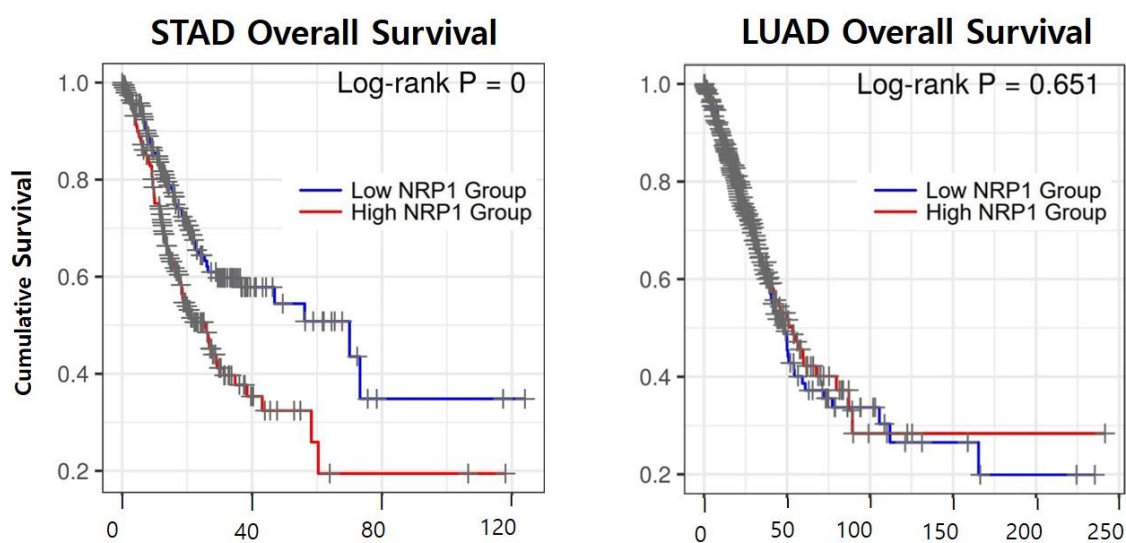


**Supplementary Table S1. Tumor Abbreviations.**

Abbreviation	Type of Cancer
ACC	Adrenocortical carcinoma
BLCA	Bladder Urothelial Carcinoma
BRCA	Breast invasive carcinoma
CESC	Cervical squamous cell carcinoma and endocervical adenocarcinoma
CHOL	Cholangio carcinoma
COAD	Colon adenocarcinoma
DLBC	Lymphoid Neoplasm Diffuse Large B-cell Lymphoma
ESCA	Esophageal carcinoma
GBM	Glioblastoma multiforme
HNSC	Head and Neck squamous cell carcinoma
KICH	Kidney Chromophobe
KIRC	Kidney renal clear cell carcinoma
KIRP	Kidney renal papillary cell carcinoma
LAML	Acute Myeloid Leukemia
LGG	Brain Lower Grade Glioma
LIHC	Liver hepatocellular carcinoma
LUAD	Lung squamous cell carcinoma
MESO	Mesothelioma
OV	Ovarian serous cystadenocarcinoma
PAAD	Pancreatic adenocarcinoma
PCPG	Pheochromocytoma and Paraganglioma
PRAD	Prostate adenocarcinoma
READ	Rectum adenocarcinoma
SARC	Sarcoma
SKCM	Skin Cutaneous Melanoma
STAD	Stomach adenocarcinoma
TGCT	Testicular Germ Cell Tumors
THCA	Thyroid carcinoma
THYM	Thymoma
UCEC	Uterine Corpus Endometrial Carcinoma
UCS	Uterine Carcinosarcoma
UVM	Uveal Melanoma



**Supplementary Figure S2. Overexpression of NRP1 mRNA in STAD from further Oncomine Analysis.**



**Supplementary Figure S3.** The prognostic value of NRP1 using TIMER database.

**Supplementary Table S4.** Correlation analysis between NRP1 and gene markers of immune cells using Tumor-Gastric-Tan-192-fRMA-u133p2 dataset in R2: Genomics Analysis and Visualization platform (<http://r2.amc.nl>).

Description	Gene markers	STAD	
		r	P
T cell (general)	<i>CD3D</i>	0.032	0.656
	<i>CD3E</i>	0.234	***
	<i>CD2</i>	0.239	***
Treg cell	<i>FOXP3</i>	-0.296	***
	<i>CCR8</i>	-0.147	0.042
	<i>STAT5B</i>	0.637	***
TAM	<i>TGFβ (TGFB1)</i>	0.689	***
	<i>CCL2</i>	0.722	***
	<i>CD68</i>	0.163	0.024
M1 Macrophage	<i>IL10</i>	0.356	***
	<i>INOS(NOS2)</i>	-0.326	***
	<i>IRF5</i>	-0.161	0.026
M2 Macrophage	<i>COX2 (PTGS2)</i>	0.395	***
	<i>CD163</i>	0.717	***
	<i>VSIG4</i>	0.691	***
CD8 <sup>+</sup> T cell	<i>MS4A4A</i>	0.727	***
	<i>CD8A</i>	0.129	0.075
	<i>CD8B</i>	0.004	0.957
Neutrophil	<i>CD66b(CEACAM8)</i>	-0.025	0.729
	<i>CD11b (ITGAM)</i>	0.570	***
	<i>CCR7</i>	0.058	0.421
NK cell	<i>KIR2DL1</i>	-0.474	***
	<i>KIR2DL3</i>	-0.480	***
	<i>KIR2DL4</i>	-0.396	***
	<i>KIR3DL1</i>	-0.350	***
	<i>KIR3DL2</i>	-0.350	***
	<i>KIR3DL3</i>	-0.230	***
	<i>KIR2DS4</i>	-0.344	***
B cell	<i>CD19</i>	-0.184	0.011
	<i>CD79A</i>	-0.145	0.044

<b>Monocyte</b>	<i>CD86</i>	0.564	***
	<i>CD115 (CSF1R)</i>	0.612	***
	<i>PD1 (PDCD1)</i>	-0.426	***
<b>T cell exhaustion</b>	<i>CTLA4</i>	-0.082	0.260*
	<i>LAG3</i>	-0.001	1.000
	<i>TIM3 (HAVCR2)</i>	0.515	***

**Supplementary Table S5.** Correlation constants and p-values in Figure 6.

Gene markers	STAD				LUAD			
	None		Purity		None		Purity	
	Cor	P	Cor	P	Cor	P	Cor	P
<i>CSF1</i>	0.579	0 x 10 <sup>-00</sup>	0.551	1.79 x 10 <sup>-31</sup>	0.376	0 x 10 <sup>-00</sup>	0.353	6.43 x 10 <sup>-16</sup>
<i>TGFβ1</i> ( <i>TGFB1</i> )	0.596	3.37 x 10 <sup>-41</sup>	0.577	5.60 x 10 <sup>-35</sup>	0.458	0 x 10 <sup>-00</sup>	0.444	2.93 x 10 <sup>-25</sup>
<i>IL10</i>	0.551	2.56 x 10 <sup>-34</sup>	0.534	2.48 x 10 <sup>-29</sup>	0.197	6.56X10 <sup>-6</sup>	0.177	7.95 x 10 <sup>-5</sup>
<i>EBI3</i>	0.43	0 x 10 <sup>-00</sup>	0.422	7.83 x 10 <sup>-18</sup>	0.153	4.86 x 10 <sup>-4</sup>	0.114	1.12 x 10 <sup>-2</sup>