

Supplementary figures

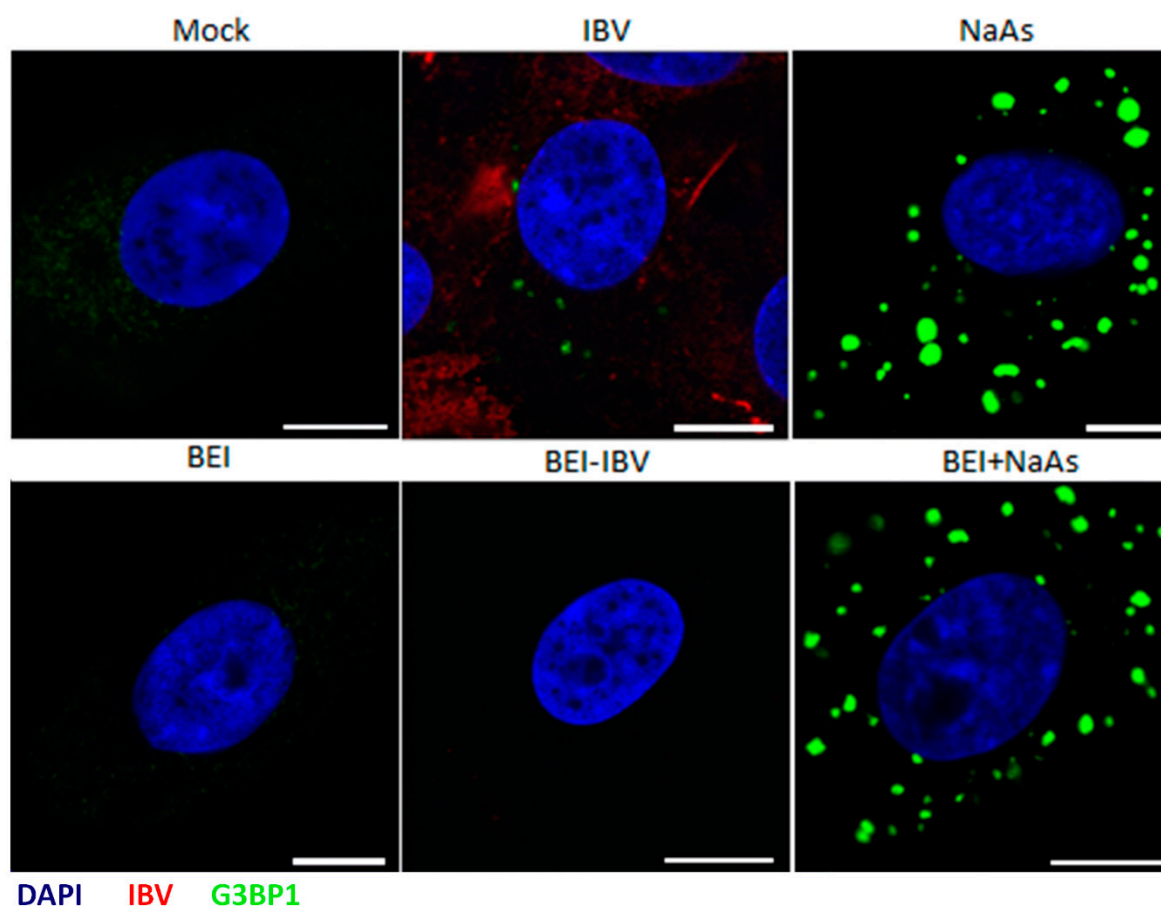


Figure S1. Active replication is required for IBV induced stress granules. Vero cells were mock infected or infected with IBV or BEI-inactivated IBV. Mock conditions using BEI-inactivation reagents with and without sodium arsenite were used in isolation from virus to ensure these did not alter SG formation. Cells were labeled with anti-G3BP1 (green) and anti-IBV (red). Nuclei were stained with DAPI (blue). Scale bar indicates 10 μm .



© 2020 by the authors. Licensee MDPI, Basel, Switzerland. This article is an open access article distributed under the terms and conditions of the Creative Commons Attribution (CC BY) license (<http://creativecommons.org/licenses/by/4.0/>).