

Fig. S1. Ten conserved motifs from 142 CsbHLH proteins. The logos of ten conserved motif sequences were obtained from MEME Suite website. The bit score means information content of each position in the amino acid sequence.

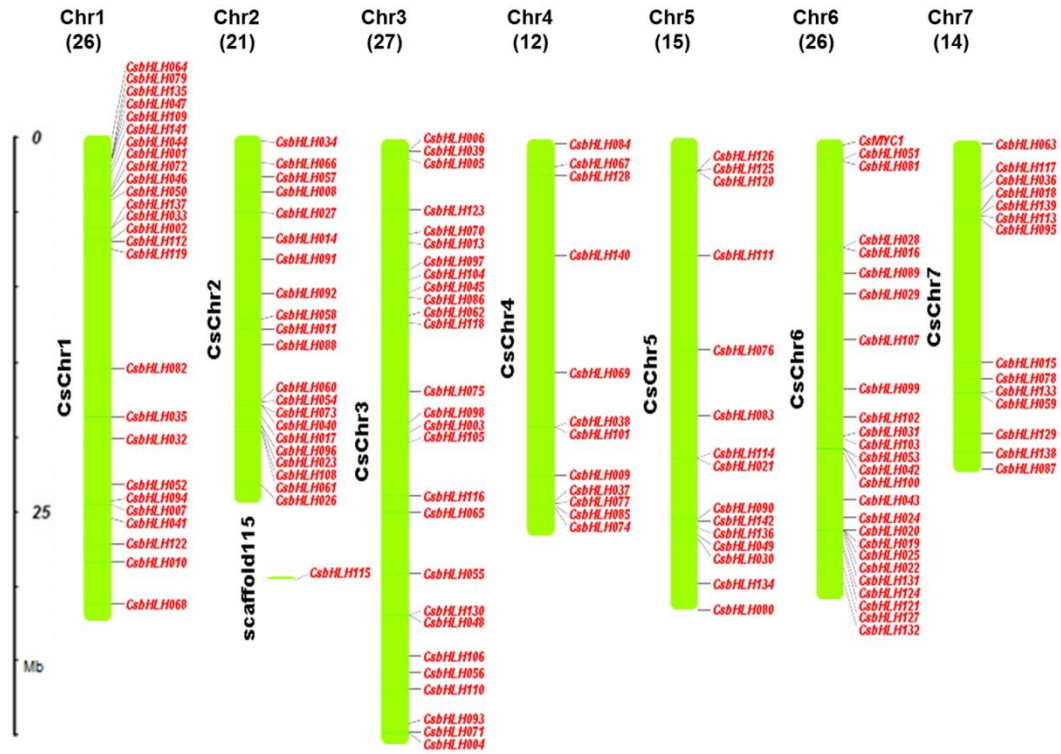


Fig. S2. Genome locations of the 142 *CsbHLH* genes on 7 chromosomes. Chromosomal positions of the *CsbHLH* genes were indicated by *CsbHLH* number. The scale was in megabases (Mb). The numbers below the name of the chromosome showed the number of *CsbHLH* genes in this chromosome.

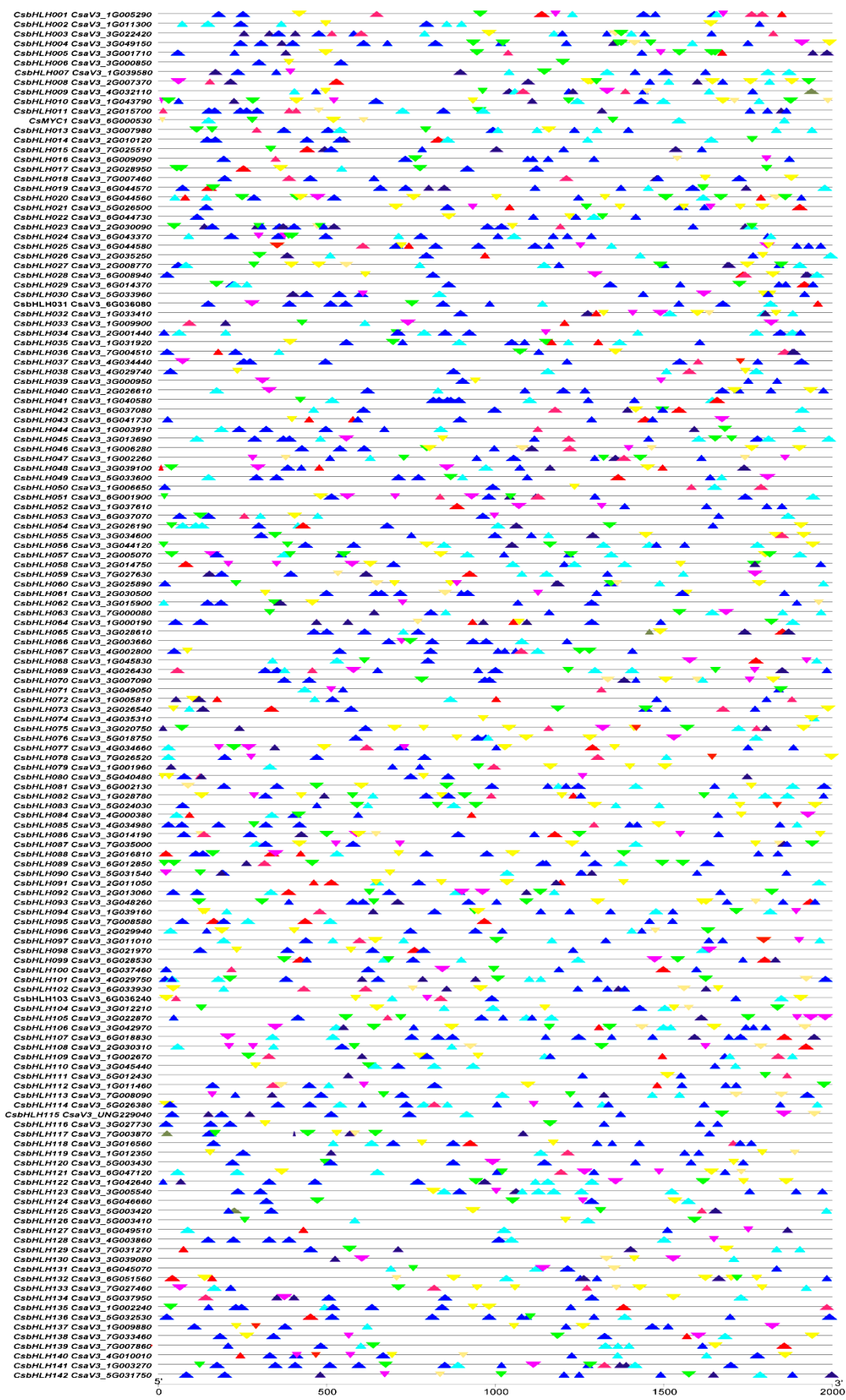


Fig. S3. *Cis*-element analysis in the *CsbHLLH* genes promoter regions. The potential *cis*-regulatory elements in the promoter regions 2-kb upstream of the *CsbHLLH* genes, particularly the elements related to stress responsiveness (light induction; anaerobic induction, low temperature and drought inducibility) and plant hormones (Abscisic acid, Auxin, MeJA, Gibberellic acid and Salicylic acid). Different colored triangles represented different *cis*-elements.

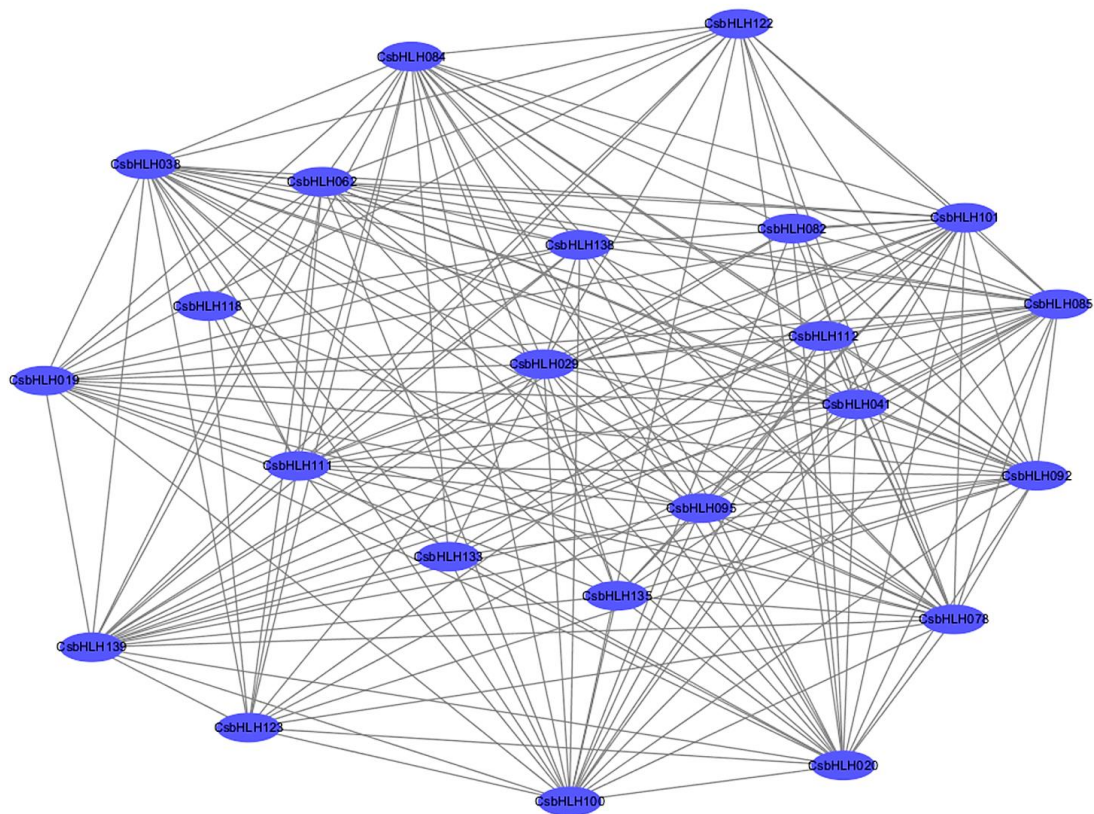


Fig. S4. Co-expression network of the *CsbHLLH* genes. Using the available RNA-seq data of 10 tissues regarding correlations between cucumber *bHLLH* genes, a network of co-expressed genes with weight value greater than 0.5 was constructed. This network contains 23 *CsbHLLH* genes (nodes) and 191 correlations (edges).