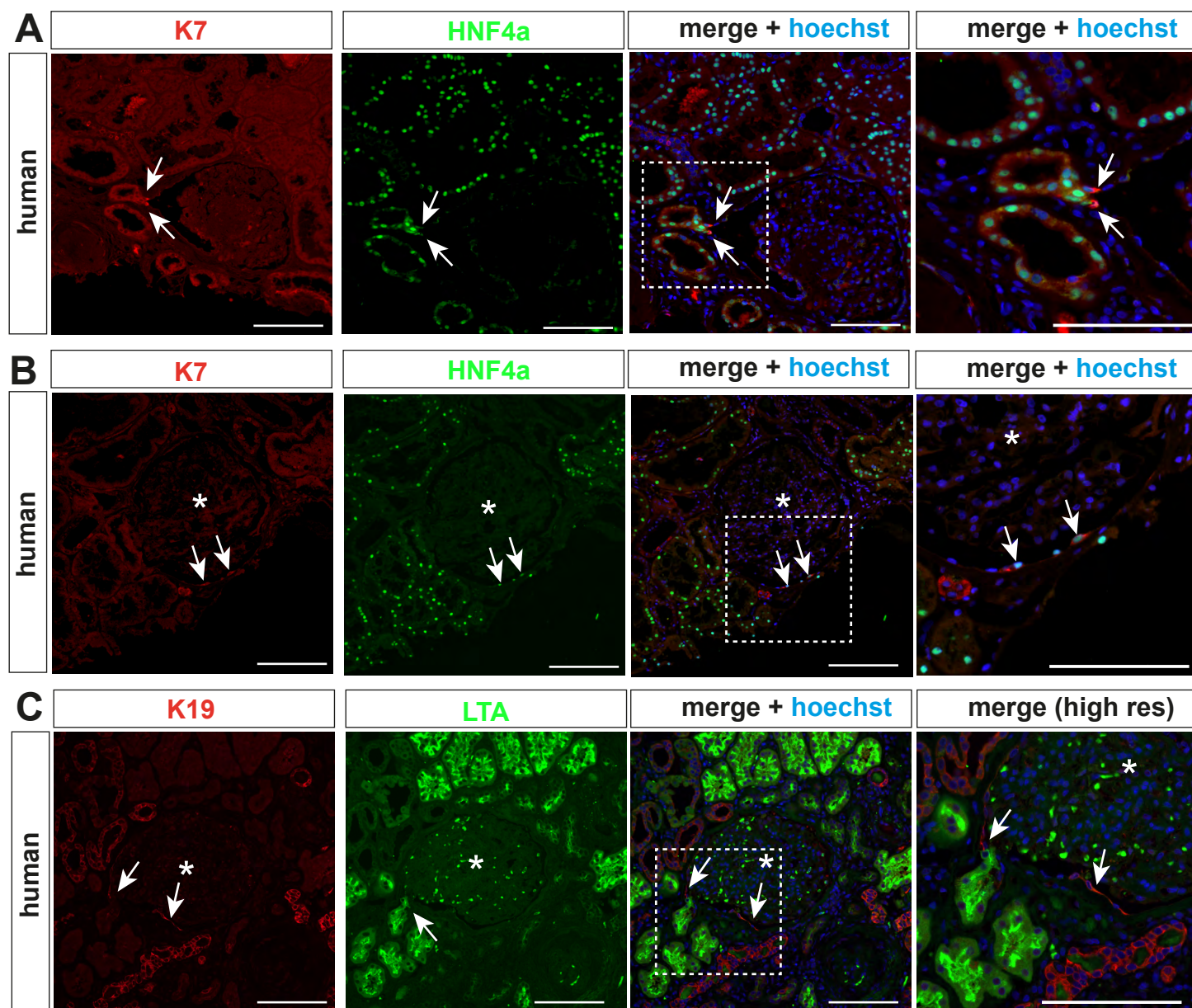


supplementary Figure 1



Supplementary Figure 1

STC markers and parietal epithelial subpopulations

A-C. Immunofluorescent staining for K7, K19, HNF4alpha and LTA. **A.** HNF4alpha marks proximal tubular cells, panel in A. Note that K7 positive cells were located in conjunction to HNF4alpha at the tubular-glomerular junction. **B.** HNF4alpha positive cells could be detected on Bowmann's capsule. Note that K7 positive cells were located in conjunction to HNF4alpha positive cells. **C.** K19 positive cells can be detected in direct conjunction to LTA positive tubular cells (arrow in C). Scale bar 100 μm .