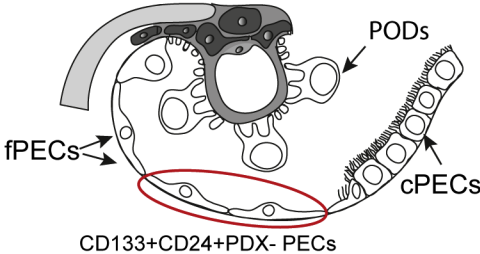
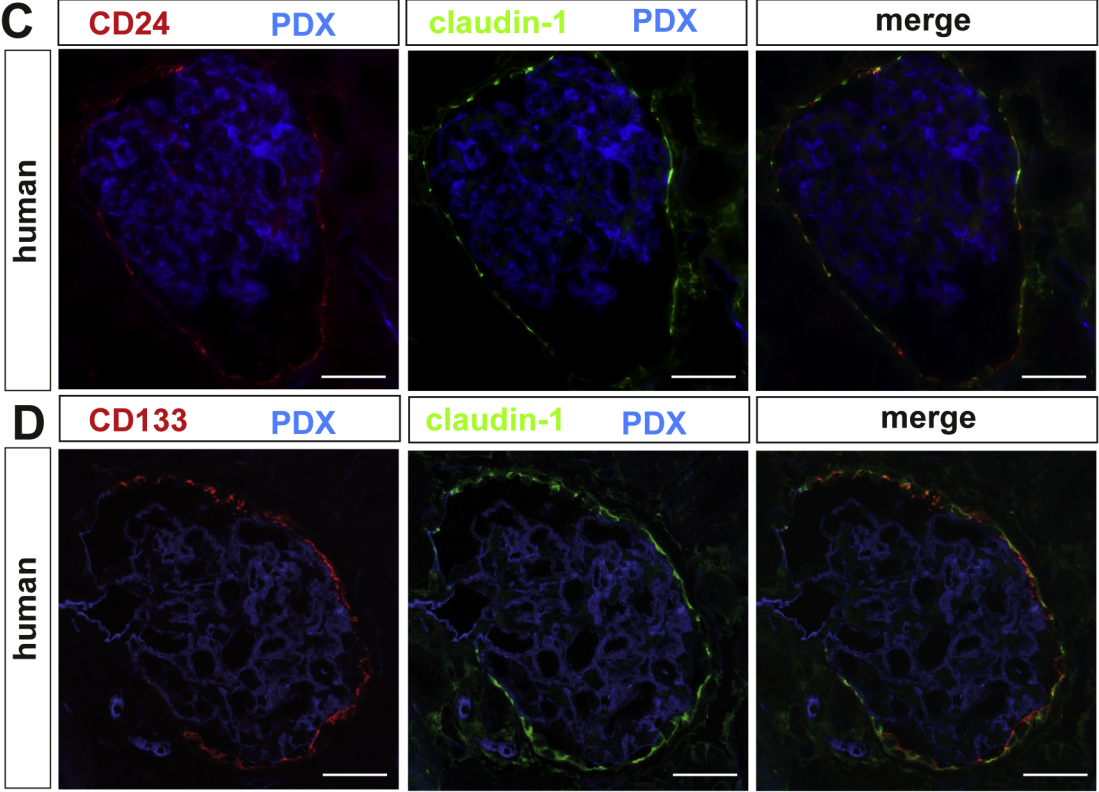
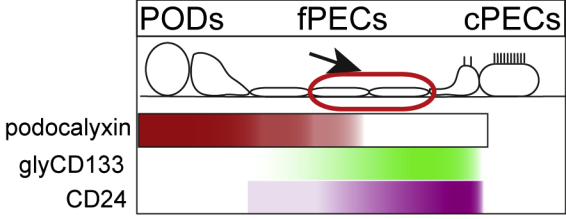


supplementary Figure 2

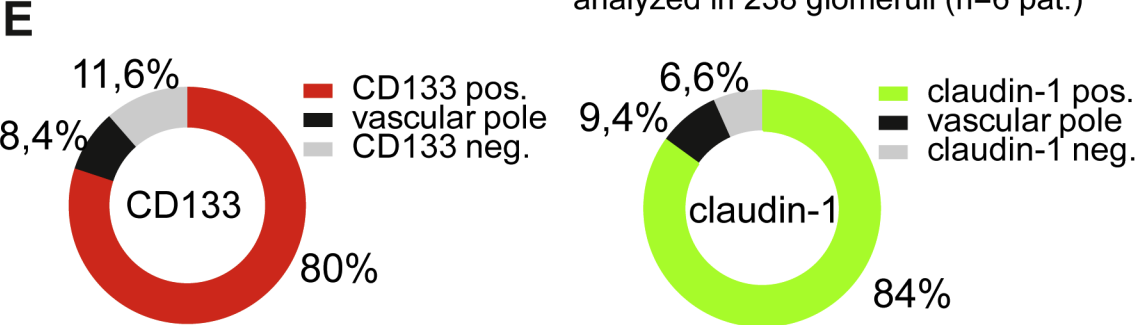
A schematic publ. nomenclature



B published marker expression



analyzed in 238 glomeruli (n=6 pat.)



Supplementary Figure 2

Analysis of CD24/glyCD133 on Bowman's capsule.

A-B. Schematic of the nomenclature. PODs, podocytes; CD133+CD24+PDX- PECs, presumptive localization of renal progenitors (red circle), cPEC; cuboidal PEC; PDX, podocalyxin. **B.** According to previous reports, a graded expression of progenitor markers into podocyte markers (PDX) indicated continuous podocyte regeneration.

C-D. Representative immunofluorescent co-stainings of podocalyxin (podocytes), claudin-1 (fPECs) and either CD24 or glyCD133. Scale bar 100 μ m. **E.** Expression of glyCD133 and claudin 1 as percentage of the circumference of Bowman's capsule in normal human kidney (total of 238 glomeruli in 6 different nephrectomy specimens).