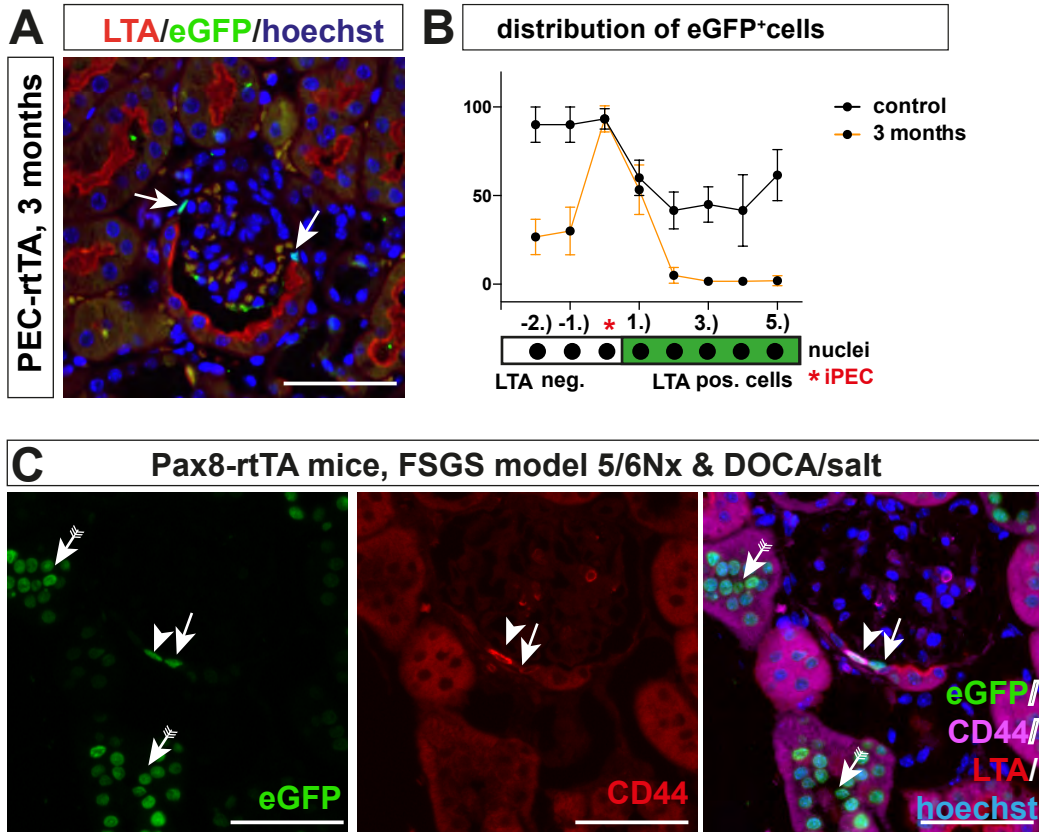


supplementary Figure 4



Supplementary Figure 4

A. In the PEC-rtTA mouse after a pulse chase period of 3 months, the histone-eGFP metabolic label persisted preferentially in iPECs (arrows). Scale bars, 50 μm . **B.** Analysis of eGFP positive nuclei on Bowman's capsule in aged PEC-rtTA mice (n=5, ANOVA, $P < 0.001$). **C.** In Pax8-rtTA mice subjected to 5/6 nephrectomy and DOCA&salt treatment to induce FSGS lesions, CD44 was expressed in the eGFP-positive presumptive iPECs (arrowhead). In the example shown, the adjacent cPEC has also retained its GFP-histone labelling but does not express activation marker CD44 (arrow). Labelling within tubular cells is marked by arrows with tails.