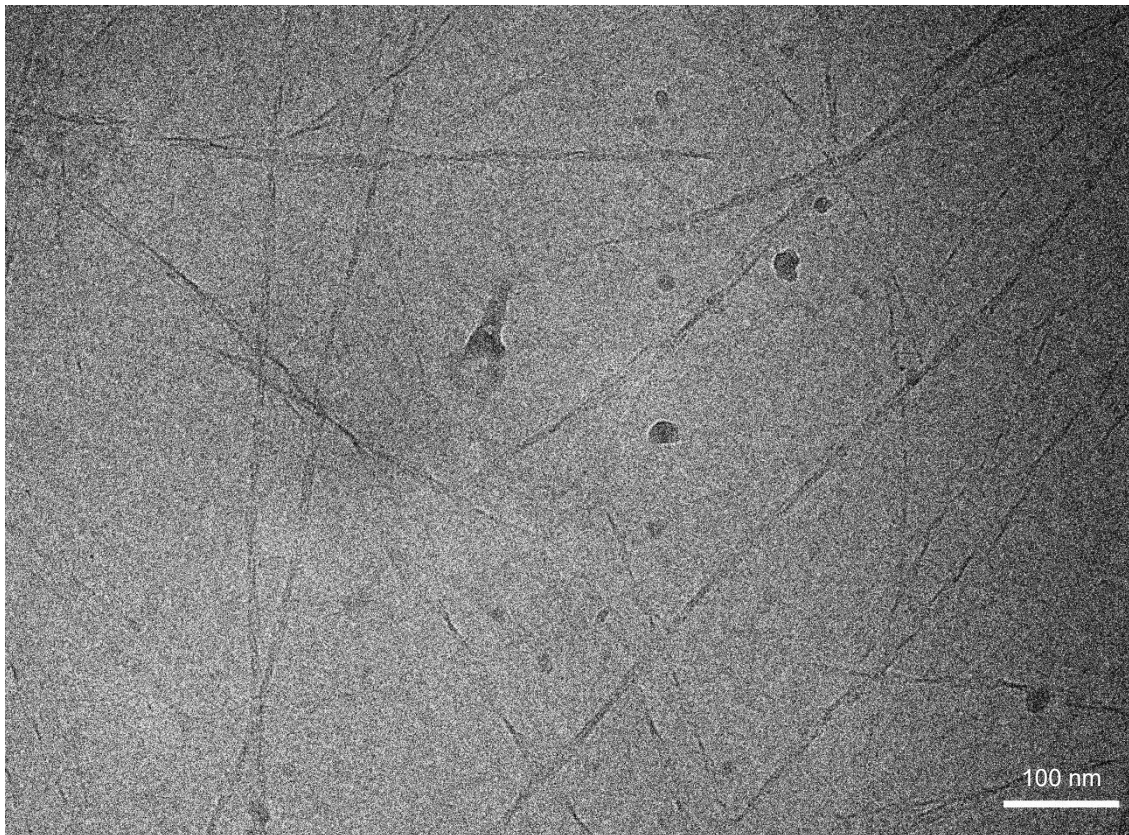
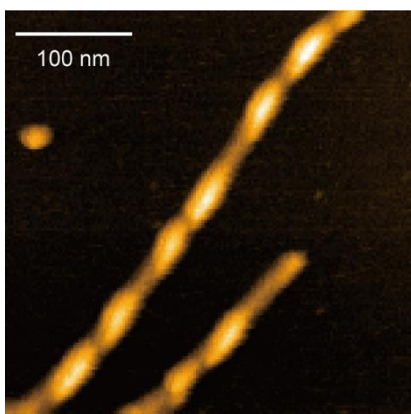


## Supplementary Figure 1

(A)



(B)



Supplementary Figure 1 (A) An overview cryo-EM image and (B) a typical AFM image of the A $\beta$ (1-40) amyloid fibrils prepared under the microgravity condition. AFM images of amyloid fibrils placed on a freshly cleaved mica were acquired in the tapping mode at room temperature.