

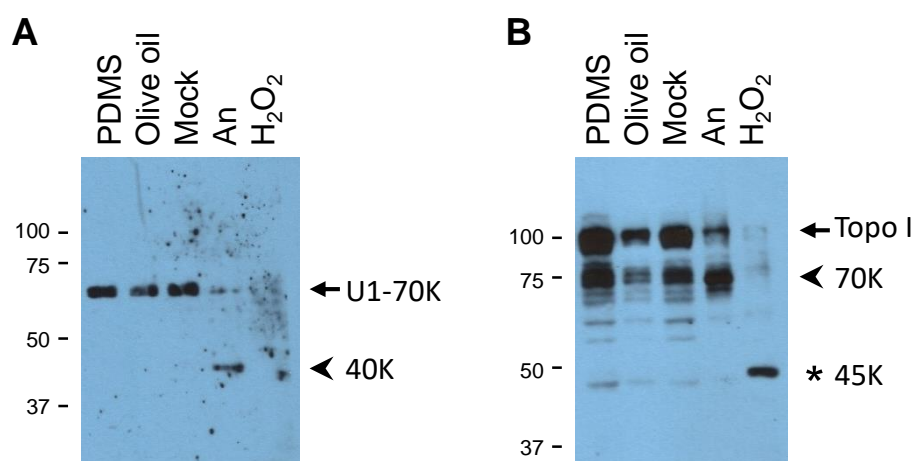
Supplementary Information

Low molecular weight silicones induce cell death in cultured cells

Carla Onnekink¹, Rita M. Kappel², Wilbert C. Boelens¹, Ger J.M. Pruijn^{1*}

¹Department of Biomolecular Chemistry, Institute for Molecules and Materials (IMM), Radboud University, Nijmegen; ²Dr. Kappel Institute, Zwolle, The Netherlands

Supplementary Figure 1

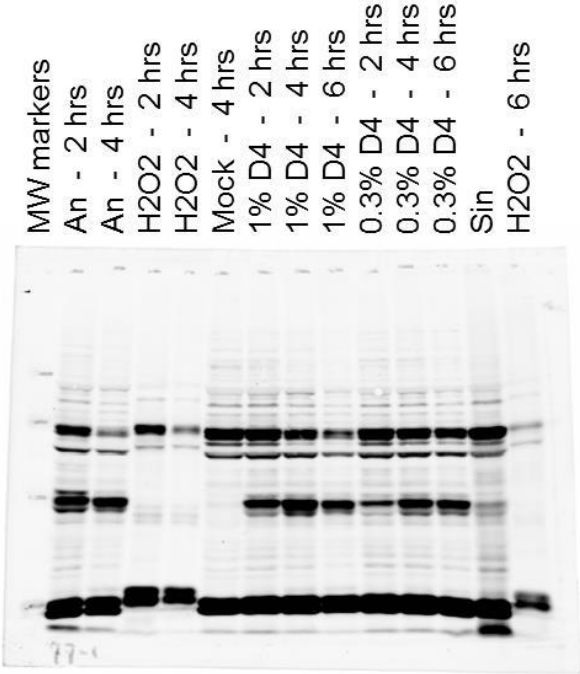


Suppl. Fig. 1 Polydimethylsiloxane does not induce cell death. Jurkat cells were cultured for 7 hours in the presence of polydimethylsiloxane (PDMS) or olive oil. Cell lysates were analyzed by western blotting using patient sera reactive with U1-70K (A) or Topo I (B). The apoptotic cleavage products of U1-70K and Topo I (arrows) are indicated with arrowheads; the necrotic cleavage product of Topo I is indicated with an asterisk. As a reference, material from anisomycin- (An), H₂O₂- and mock-treated cells was electrophoresed in parallel. The positions of molecular weight markers are indicated on the left of each panel. Note that in both panels a cropped part of the respective blot is shown, as further illustrated below.

Full-length gels and blots

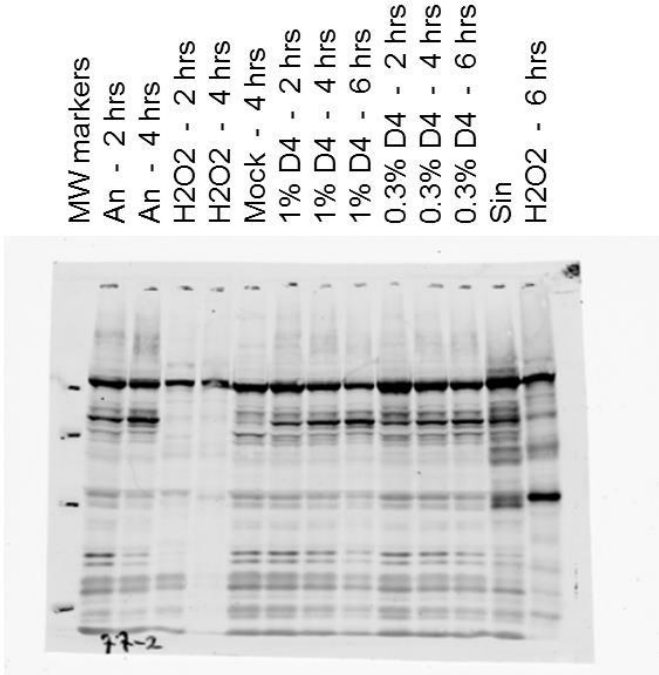
Figure 2

Panel A



Lane numbers in Figure 2A 1 2 3 4 6 7 8 9 - - - - 5

Panel B



Lane numbers in Figure 2B 1 2 3 4 6 7 8 9 - - - - 5

Figure 4

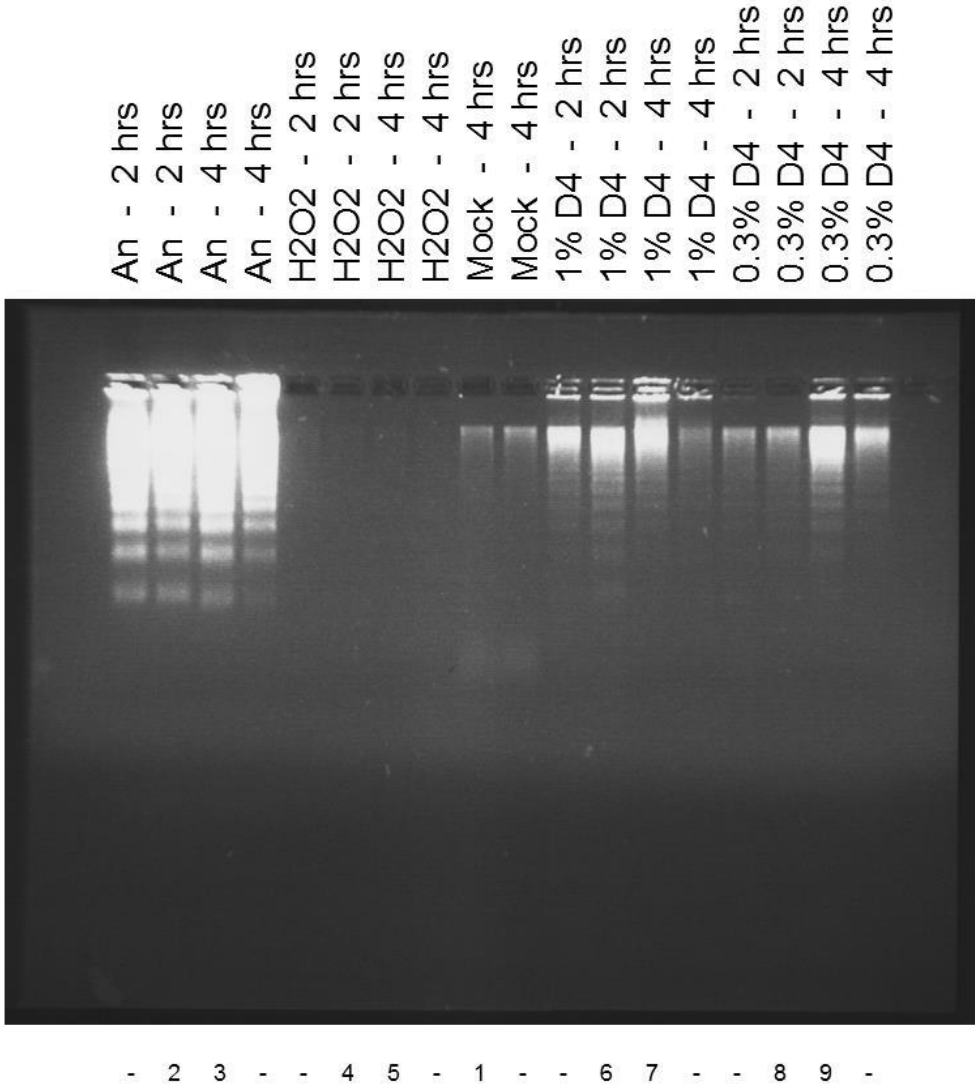
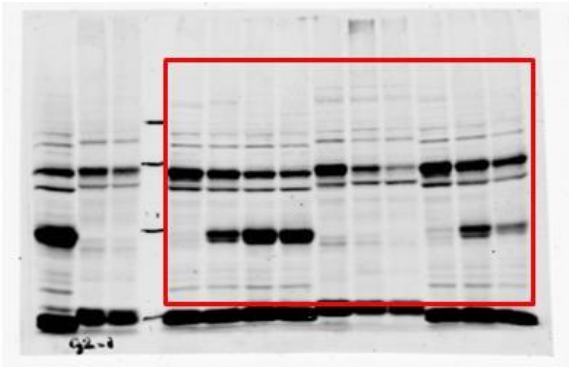


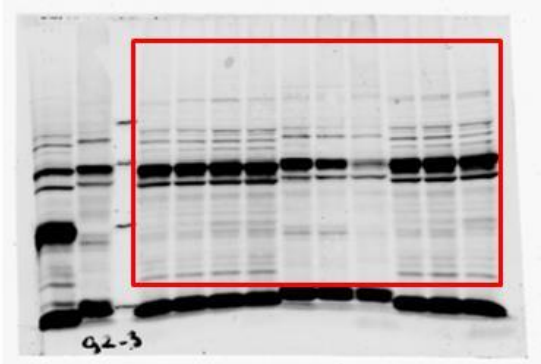
Figure 5

Section used in Figure 5A
marked in red



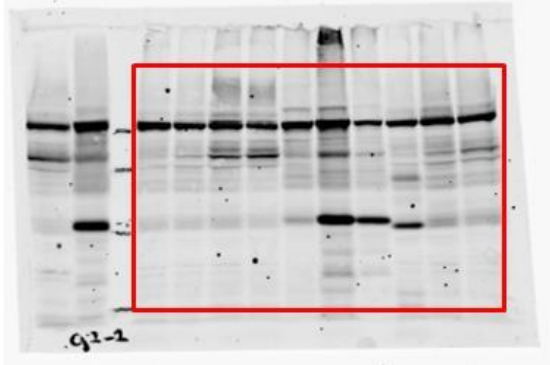
Panel A

Section used in Figure 5B
marked in red



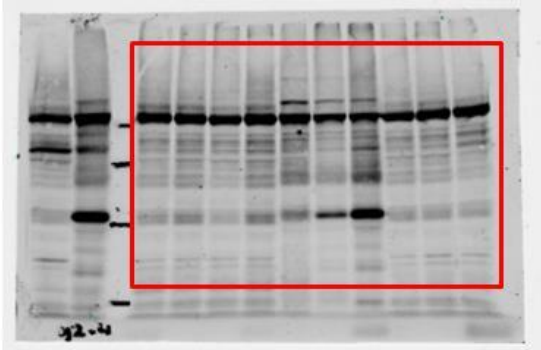
Panel B

Section used in Figure 5C
marked in red



Panel C

Section used in Figure 5D
marked in red

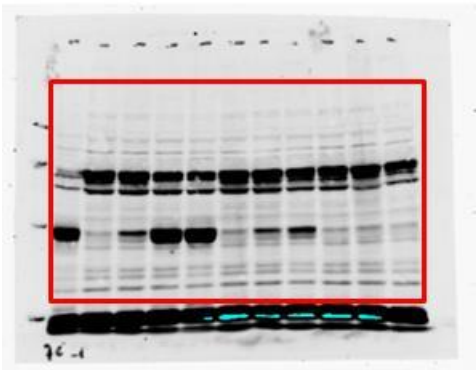


Panel D

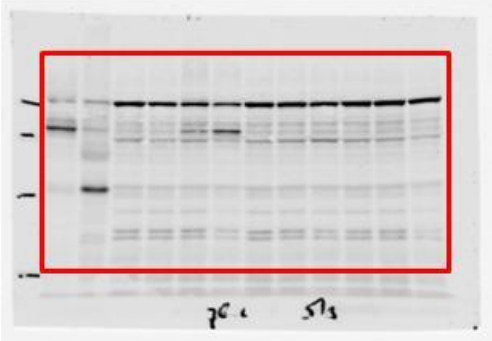
Figure 6

Panels A, B

Section used in Figure 6A
marked in red

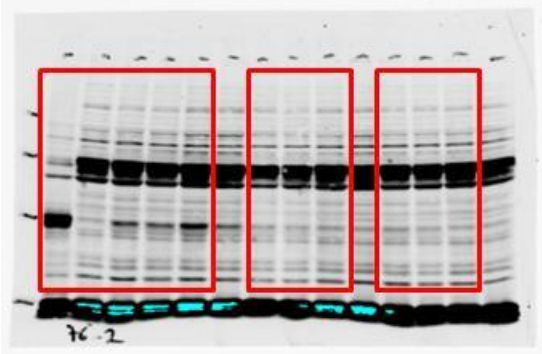


Section used in Figure 6B
marked in red

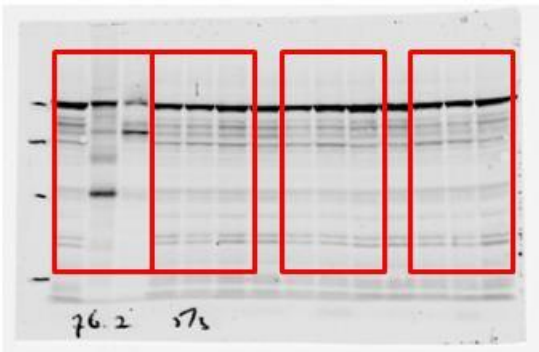


Panels C, D

Sections used in Figure 6C
marked in red

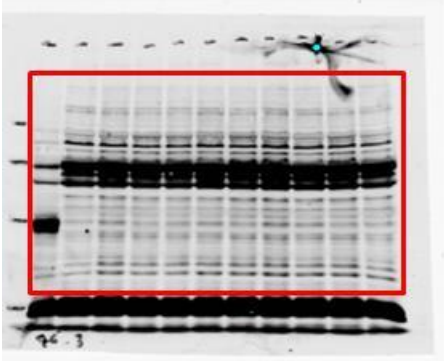


Sections used in Figure 6D
marked in red



Panels E, F

Section used in Figure 6E
marked in red



Section used in Figure 6F
marked in red

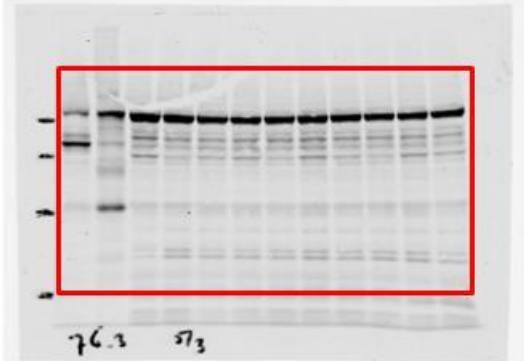
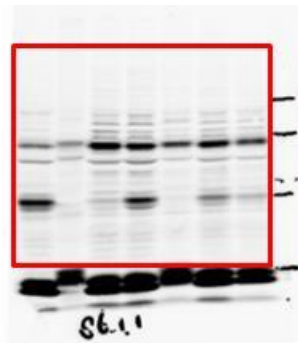


Figure 8

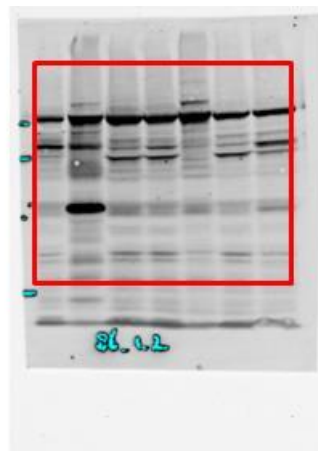
Panel A

Section used in Figure 8A
marked in red



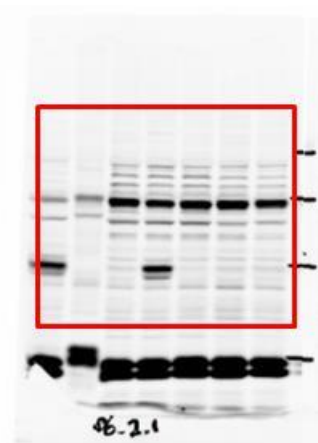
Panel B

Section used in Figure 8B
marked in red



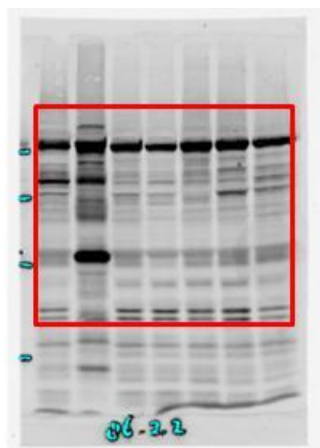
Panel C

Section used in Figure 8C
marked in red



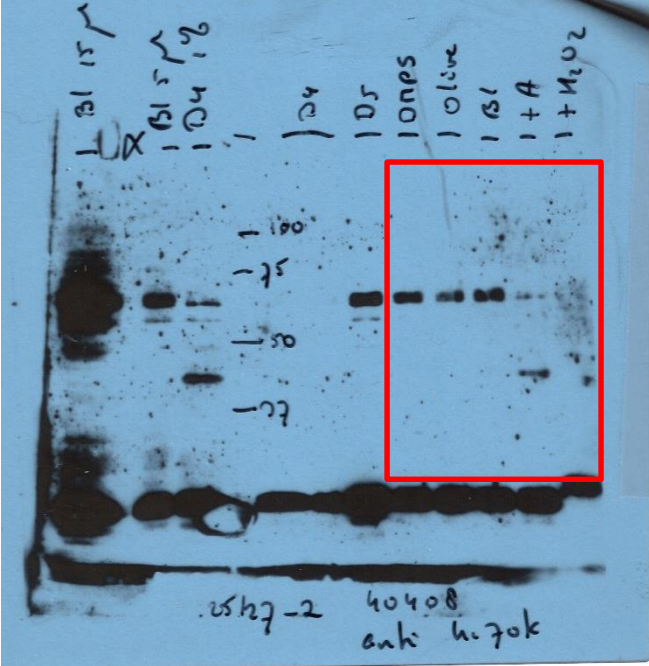
Panel D

Section used in Figure 8D
marked in red



Supplementary Figure 1

Section used in
Supplementary Figure 1A
marked in red



Section used in
Supplementary Figure 1B
marked in red

