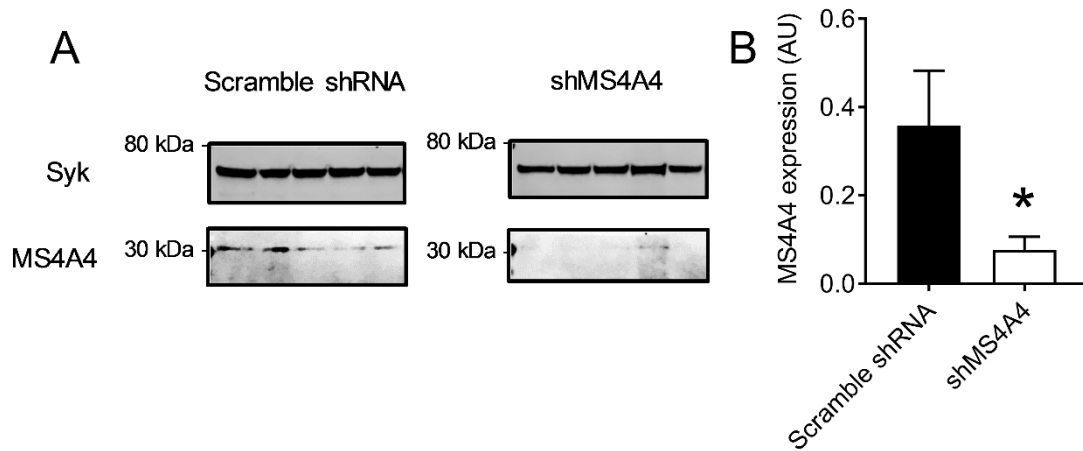


## Supplement

### The FcεRIβ homologue, MS4A4A, promotes FcεRI signal transduction and store-operated Ca<sup>2+</sup> entry in human mast cells

Greer K. Arthur, Lauren C. Ehrhardt-Humbert, Douglas B. Snider, Corey Jania, Stephen L. Tilley, Dean D. Metcalfe and Glenn Cruse



**Supplemental Figure 1. MS4A4 protein expression is reduced with shMS4A4.** (A) Western blot analysis of MS4A4A demonstrated a band of around 30kDa that was reduced with shMS4A4. Syk protein was used as a loading control. (B) Quantitative analysis of MS4A4 corrected against Syk.