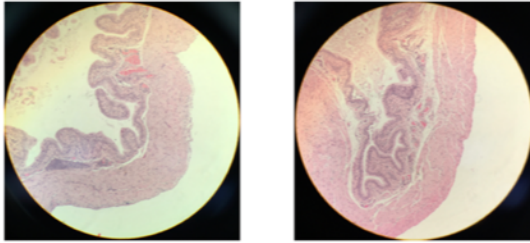
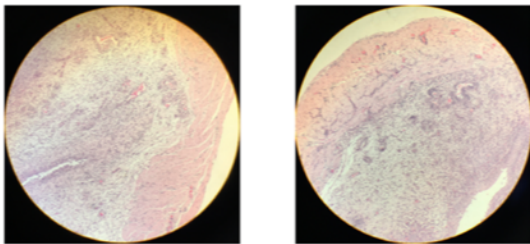


1 Supporting Information

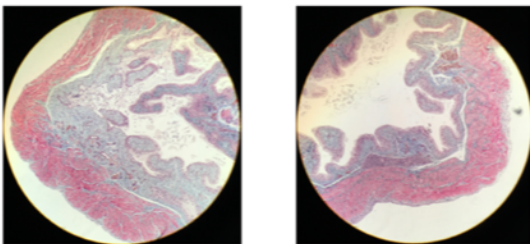
No Apparent Histological Differences between Vehicle-Injected Bladders ± Cercarial Challenge (A)



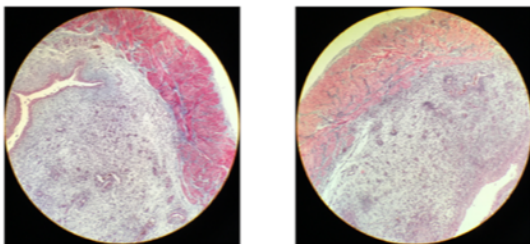
No Apparent Histological Differences between Egg-Injected Bladders ± Cercarial Challenge



No Apparent Fibrosis Differences between Vehicle-Injected Bladders ± Cercarial Challenge (B)



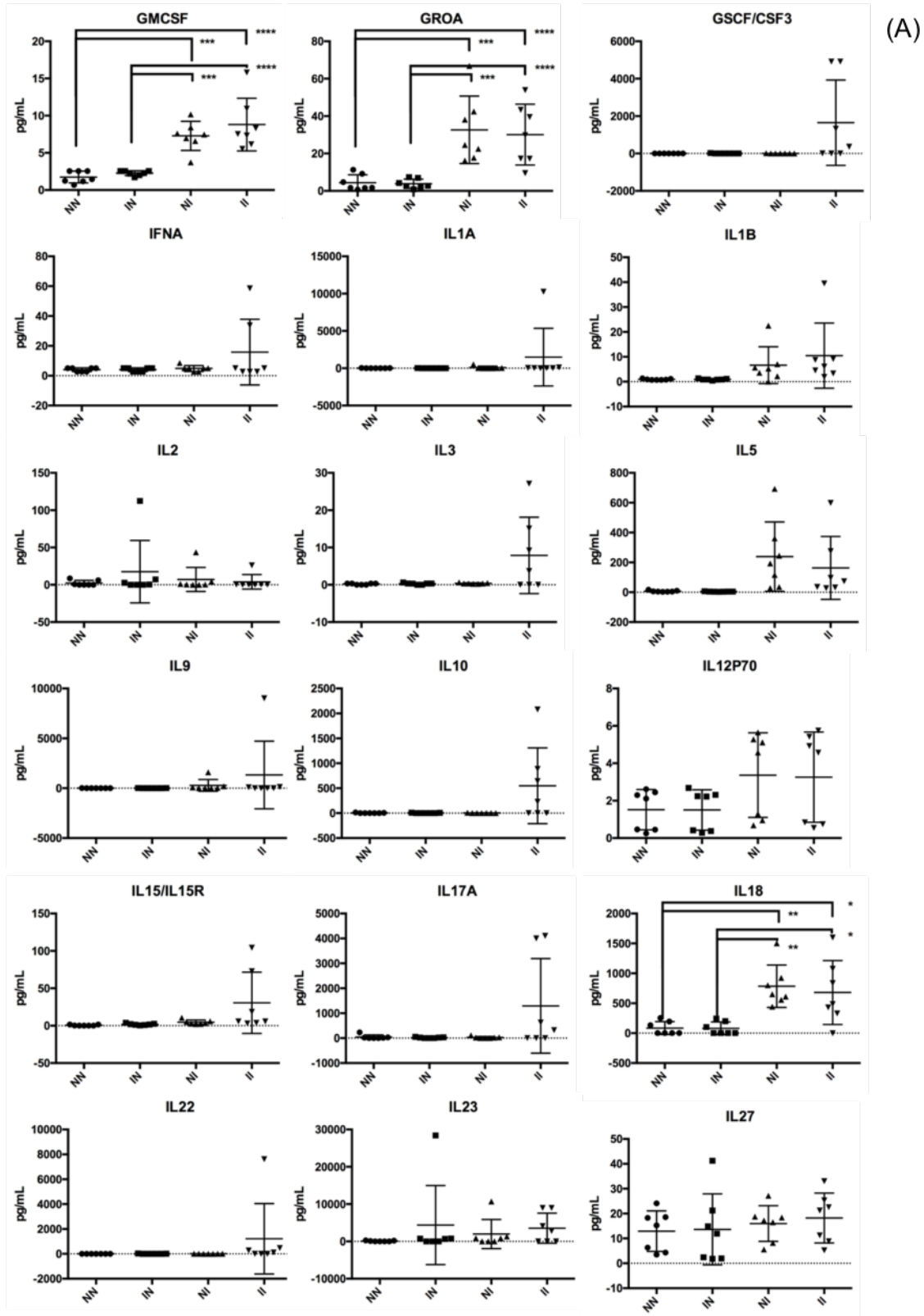
No Apparent Fibrosis Differences between Egg-Injected Bladders ± Cercarial Challenge

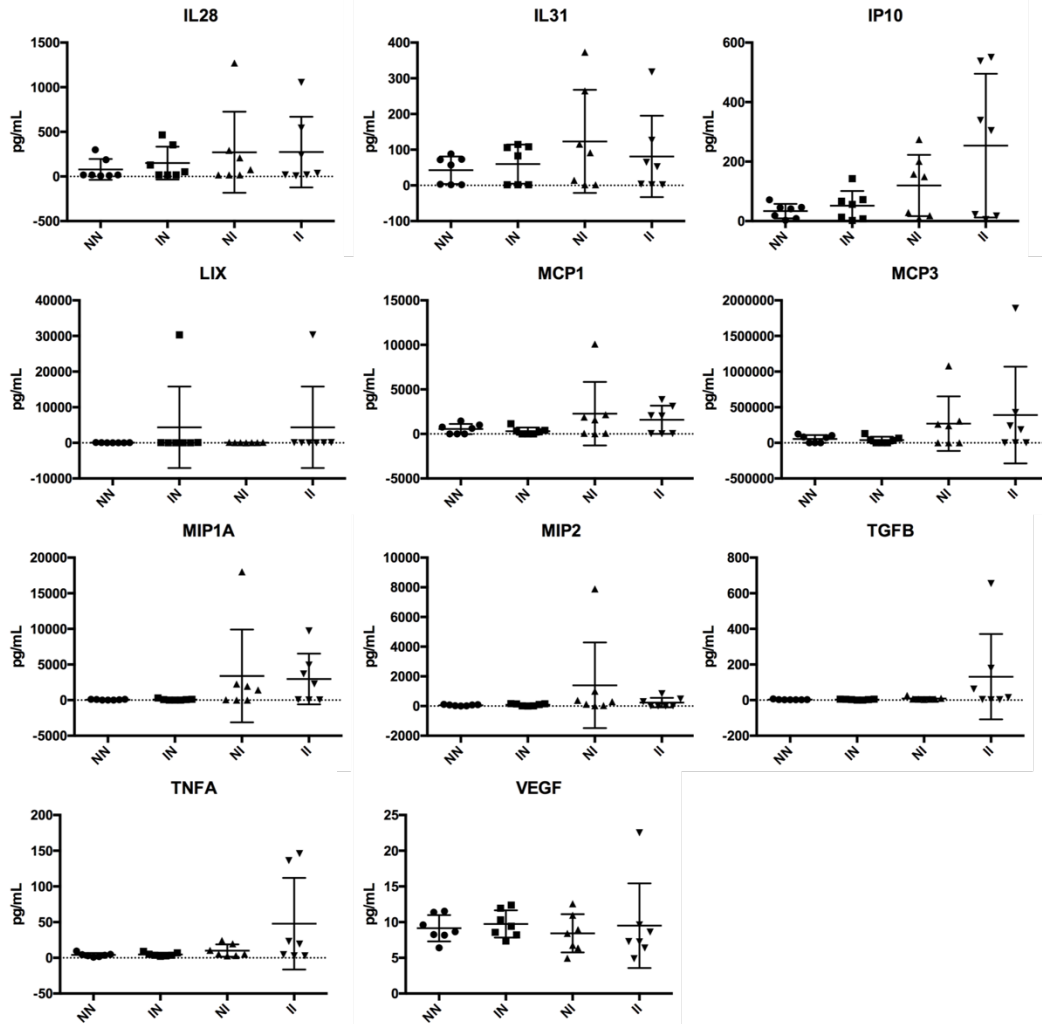


2

3 **Figure S1.** Bladder wall injections of *S. haematobium* eggs cause histologically-
4 apparent fibrosis at 10X magnification with (A) H&E and (B) Masson's Trichrome stains.

5 Supplemental Tissue Homogenate Luminex Figures





7

8

9

10

11

12

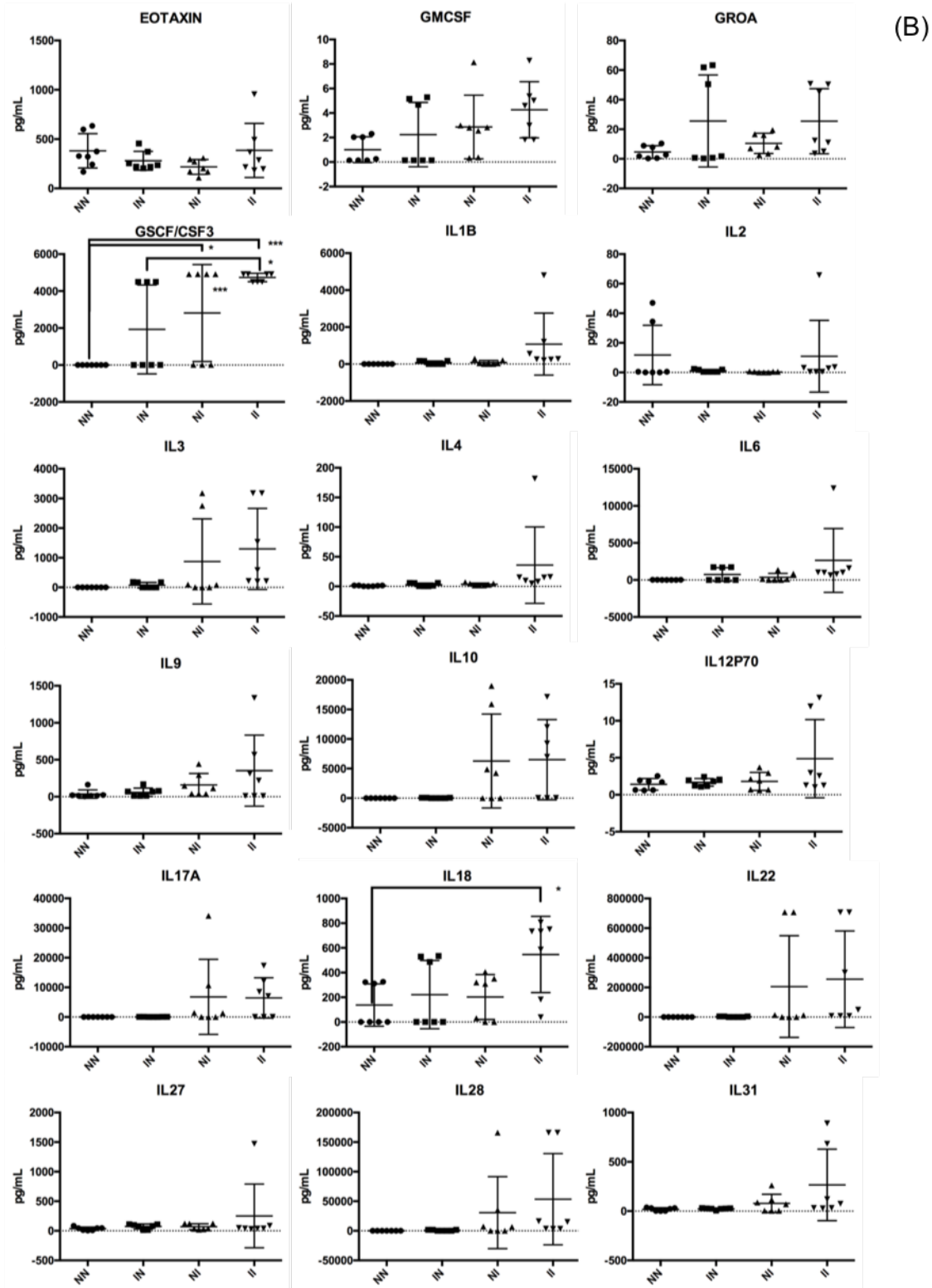
13

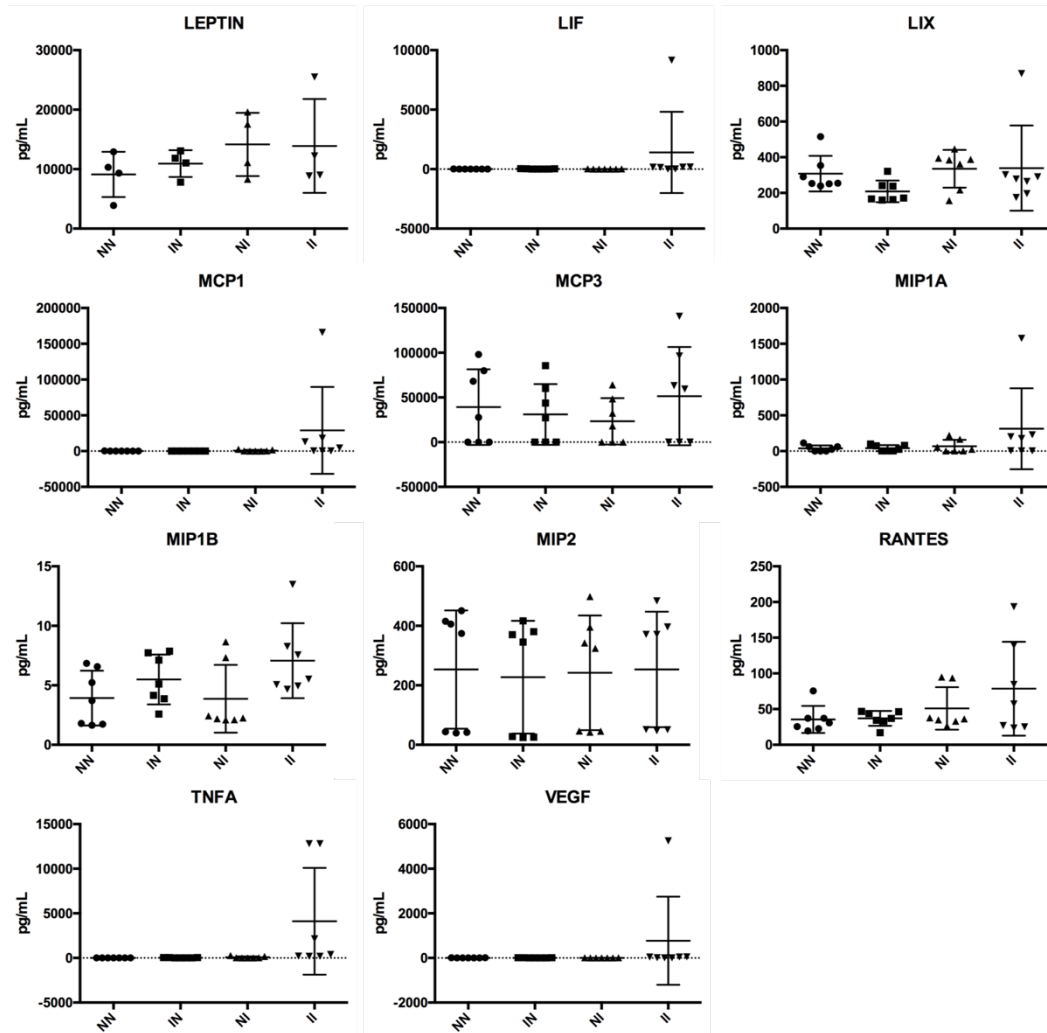
14

15

16

17 Supplemental Serum Luminex Figures



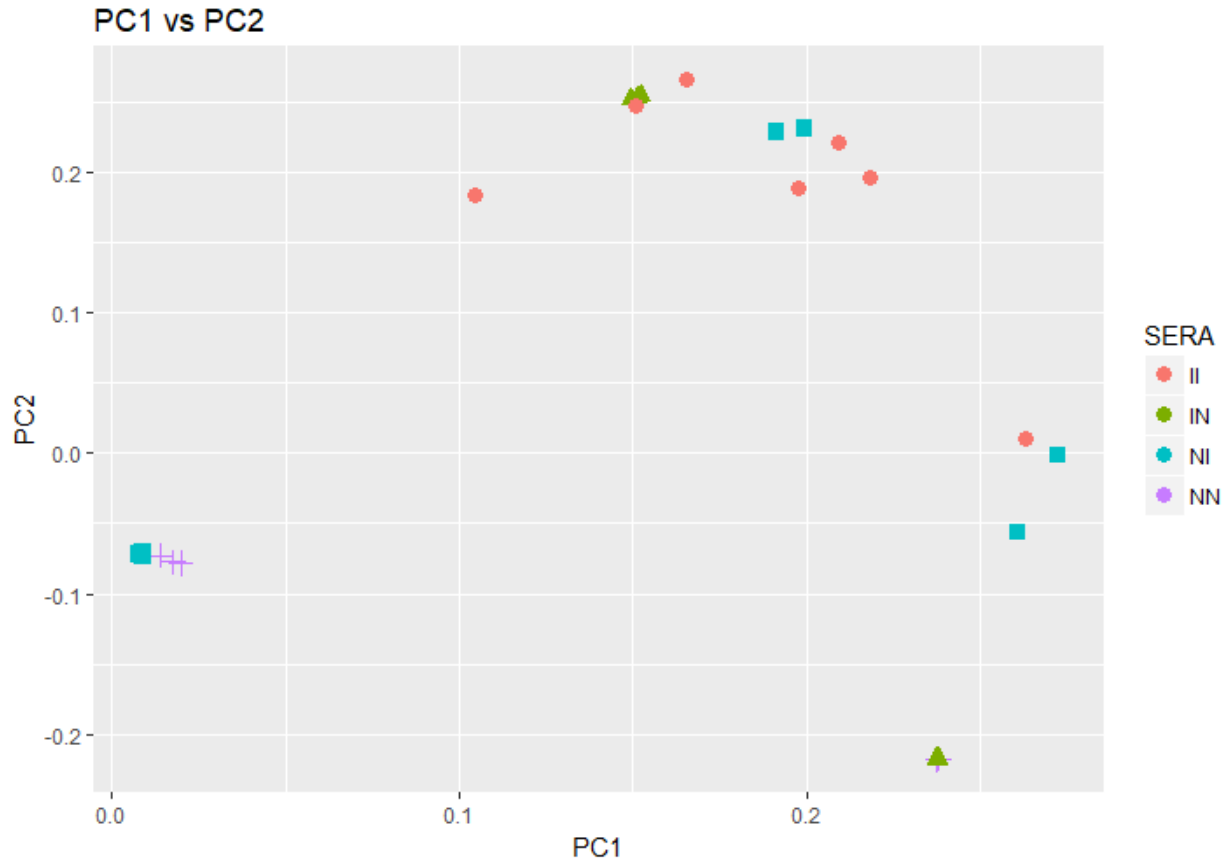


19

20 **Figure S2.** Supplemental figures of luminex cytokine analysis of bladder homogenates
 21 **(A)** and sera **(B)** from mice undergoing vehicle bladder wall injection alone (“NN”),
 22 cercarial infection and vehicle bladder wall injection (“IN”), egg bladder wall injection
 23 alone (“NI”), and both cercarial infection and egg bladder wall injection (“II”).

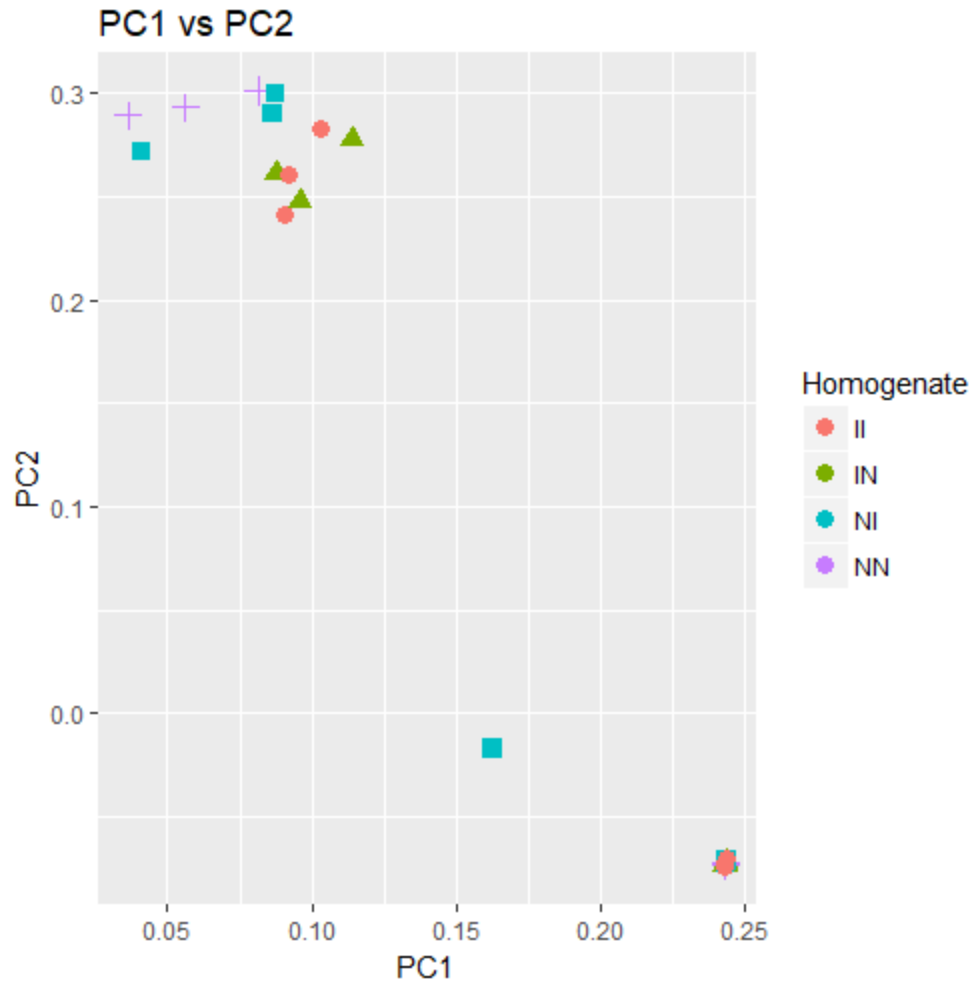
24 *=p<0.05, **=p<0.01, ***=p<0.001.

25



26

27 Figure S3. PCA plot for serum cytokine responses. PC1 represents 36.6% of the variation,
 28 while PC2 represents 29.6 % of the variation. NN= Not infected control injection, IN= Infected
 29 Control Injection, NI Not infected Egg Injection and II = Infected Egg Injection.
 30



31
 32 Figure S4. PCA plot for bladder cytokine responses. PC1 represents 57.49% of the
 33 variation, while PC2 represents 30.39 % of the variation. NN= Not infected control
 34 injection, IN= Infected Control Injection, NI Not infected Egg Injection and II = Infected
 35 Egg Injection.

36

37