

Long-Range Air Pollution Transport in East Asia During the First Week of the COVID-19 Lockdown in China

Supporting Information

Stephen Miles Griffith^{a,*}, Wei-Syun Huang^a, Chia-Ching Lin^b, Ying-Chieh Chen^b, Kuo-En Chang^c, Tang-Huang Lin^c, Sheng-Hsiang Wang^a, Neng-Huei Lin^{a,b*}

^aDepartment of Atmospheric Sciences, National Central University, Taoyuan, 32001, Taiwan

^bCenter for Environmental Monitoring and Technology, National Central University, Taoyuan, 32001, Taiwan

^cCenter for Space and Remote Sensing Research, National Central University, Taoyuan, 32001, Taiwan

* Corresponding authors at: Department of Atmospheric Sciences, National Central University, 300 Zhongda Road, Taoyuan, 32001, Taiwan. Email addresses: stegriff88@gmail.com (S. M. Griffith), nhlin@cc.ncu.edu.tw (N.-H. Lin)

Contents of this file

Fig. S1: Surface chart and back-trajectories for the 02/01/2018 LRT event arriving to Taiwan.

Fig. S2: Lidar data from northern Taiwan during the two episodes analyzed in this study.

Fig. S3: Average OMI NO₂ in the days preceding the 02/01/2018 LRT event arriving to Taiwan

Fig. S4: Average VIIRS AOD in the days preceding the a) 02/01/2018 LRT event and the b) 2020 CNY Week 3 LRT event arriving to Taiwan

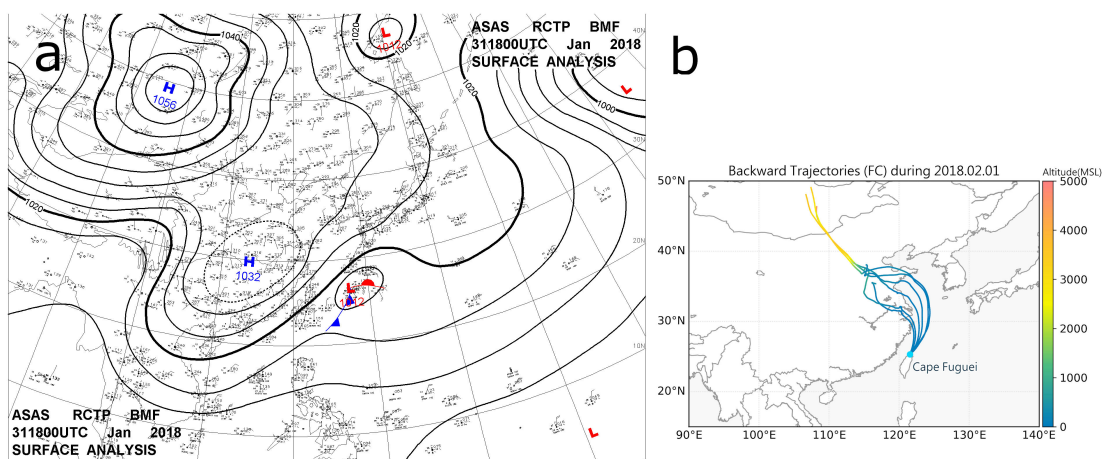


Figure S1: a) Surface chart and b) back-trajectories for the LRT event that occurred on 2/1/2018, arriving at a 100 m height every 8 hrs at Cape Fuguei in Taiwan

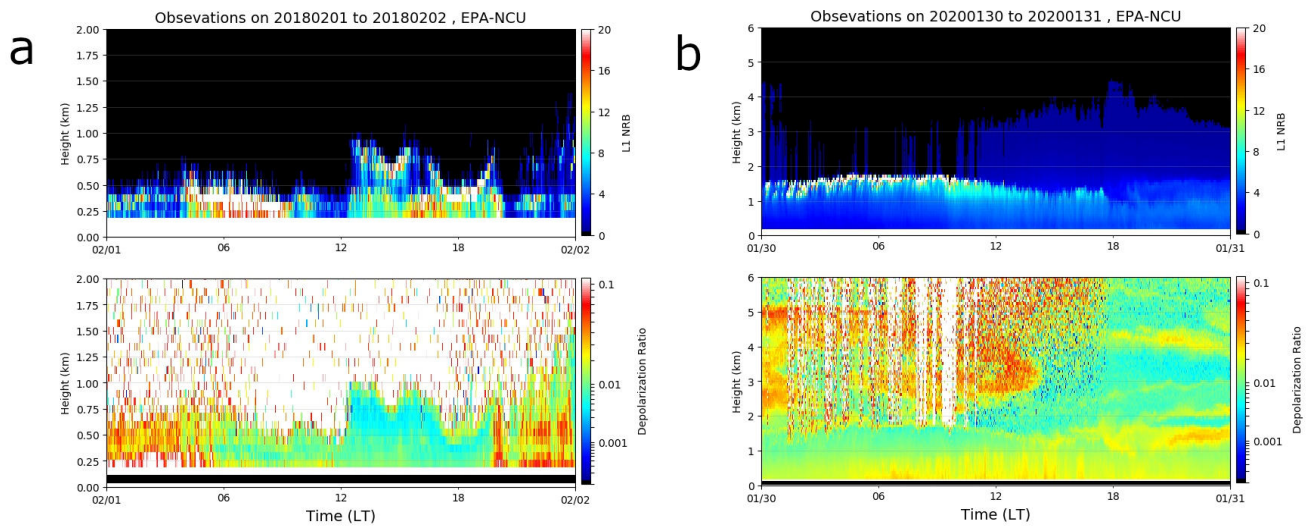


Figure S2: Lidar data from northern Taiwan during the a) 02/01/2018 LRT event and the b) 2020 CNY Week 3 LRT event arrival to Taiwan (accessed via <http://lidar.atm.ncu.edu.tw>)

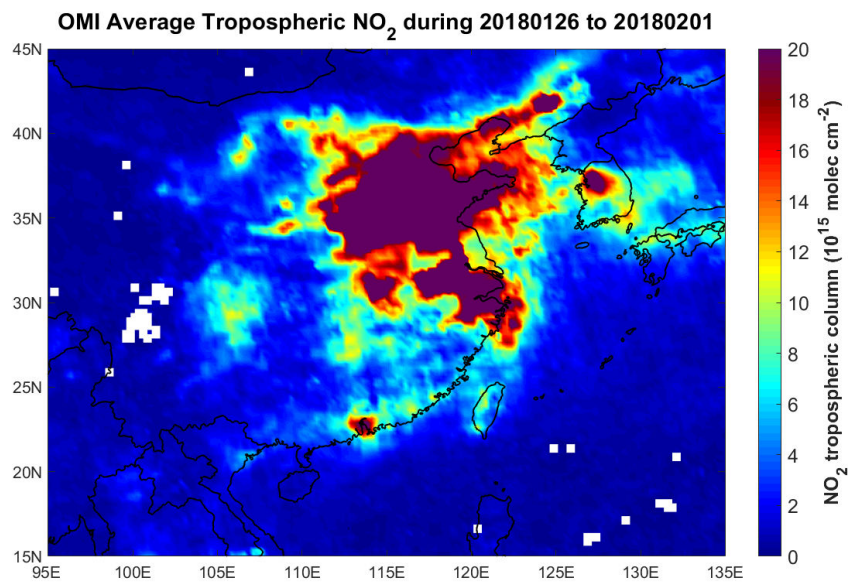
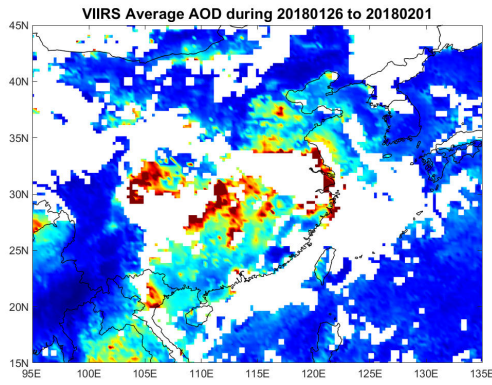


Fig. S3: Average OMI NO₂ in the days preceding the 02/01/2018 LRT event arriving to Taiwan

a



b

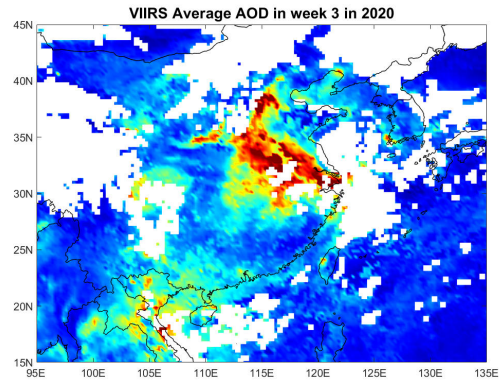


Fig. S4: Average VIIRS AOD in the days preceding the a) 02/01/2018 LRT event and the b) 2020 CNY Week 3 LRT event arriving to Taiwan