

***Mir34a* constrains pancreatic carcinogenesis**

Ana Hidalgo-Sastre¹, Clara Lubeseder-Martellato¹, Thomas Engleitner², Katja Steiger³, Suyang Zhong¹, Judit Desztics¹, Rupert Öllinger², Roland Rad², Roland M. Schmid¹, Heiko Hermeking^{4,5}, Jens T. Siveke^{6,7,8}, and Guido von Figura^{1*}.

¹ Klinik und Poliklinik für Innere Medizin II, Technical University of Munich, Germany.

² Institute of Molecular Oncology and Functional Genomics, Department of Medicine II and TranslaTUM Cancer Center, Klinikum rechts der Isar, Technical University of Munich, Munich, Germany.

³ Institute of Pathology, Technical University of Munich, Germany.

⁴ Experimental and Molecular Pathology, Institute of Pathology, Ludwig Maximilian University Munich, Munich, Germany.

⁵ German Cancer Consortium (DKTK), Partner site Munich, Germany

⁶ Institute for Developmental Cancer Therapeutics, West German Cancer Center, University Hospital Essen, Essen, Germany

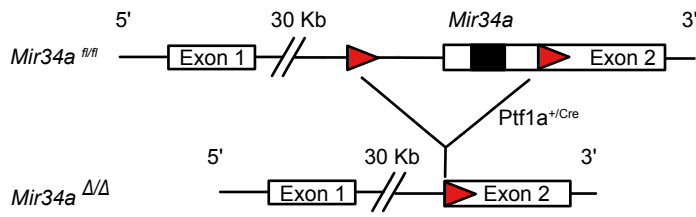
⁷ Division of Solid Tumor Translational Oncology, German Cancer Consortium (DKTK, partner site Essen) and German Cancer Research Center, DKFZ, Heidelberg, Germany;

⁸ German Cancer Consortium (DKTK), Partner site Essen, Germany

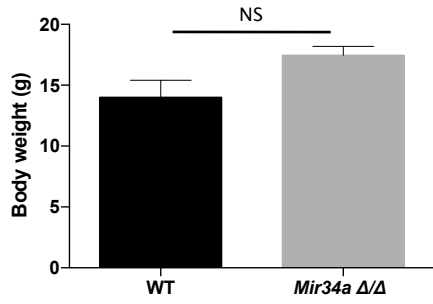
Supplementary Figures

Supplementary Figure 1

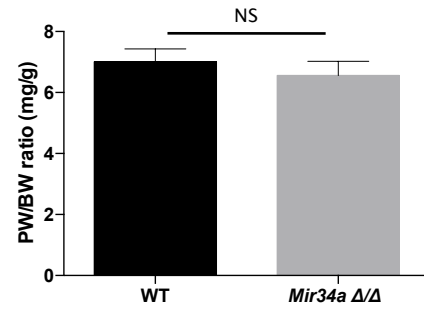
A



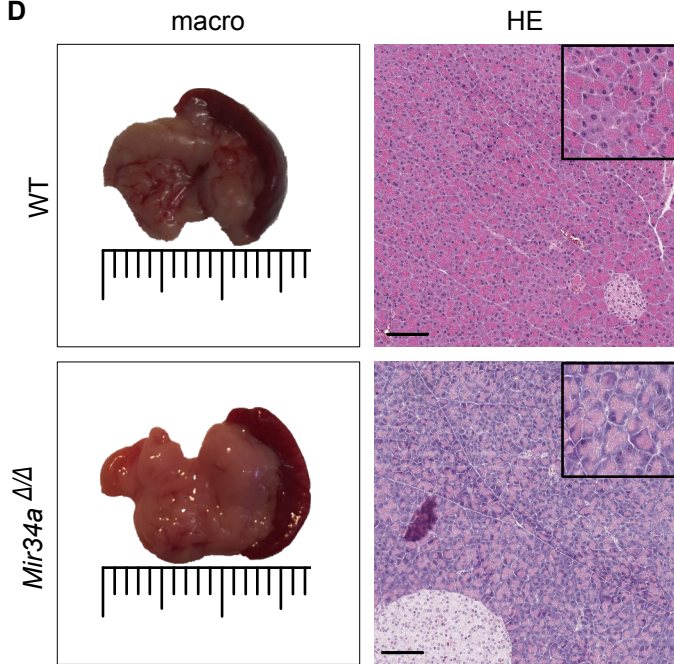
B



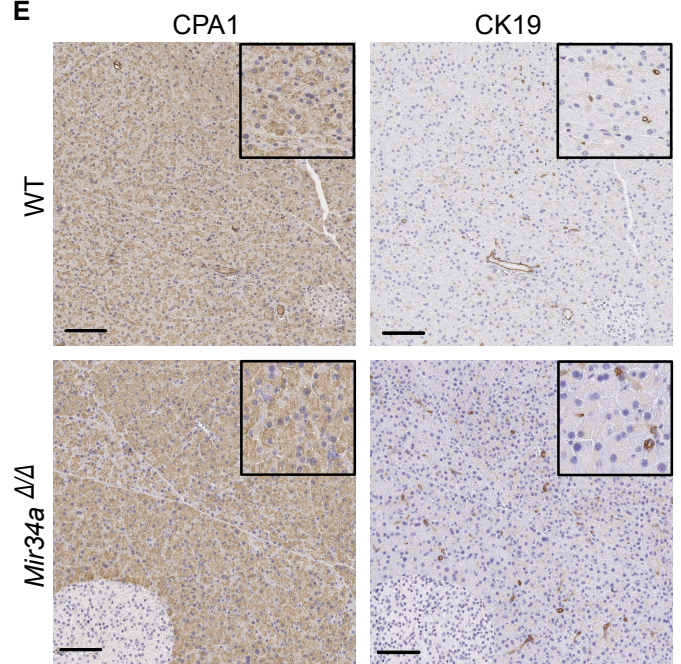
C



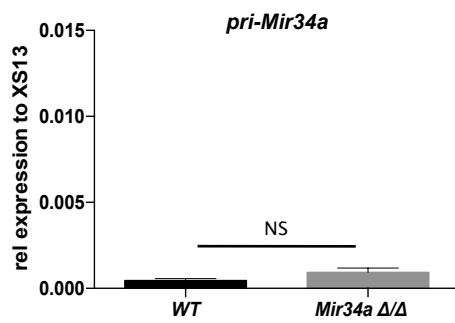
D



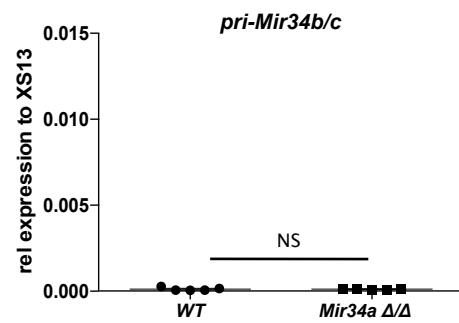
E



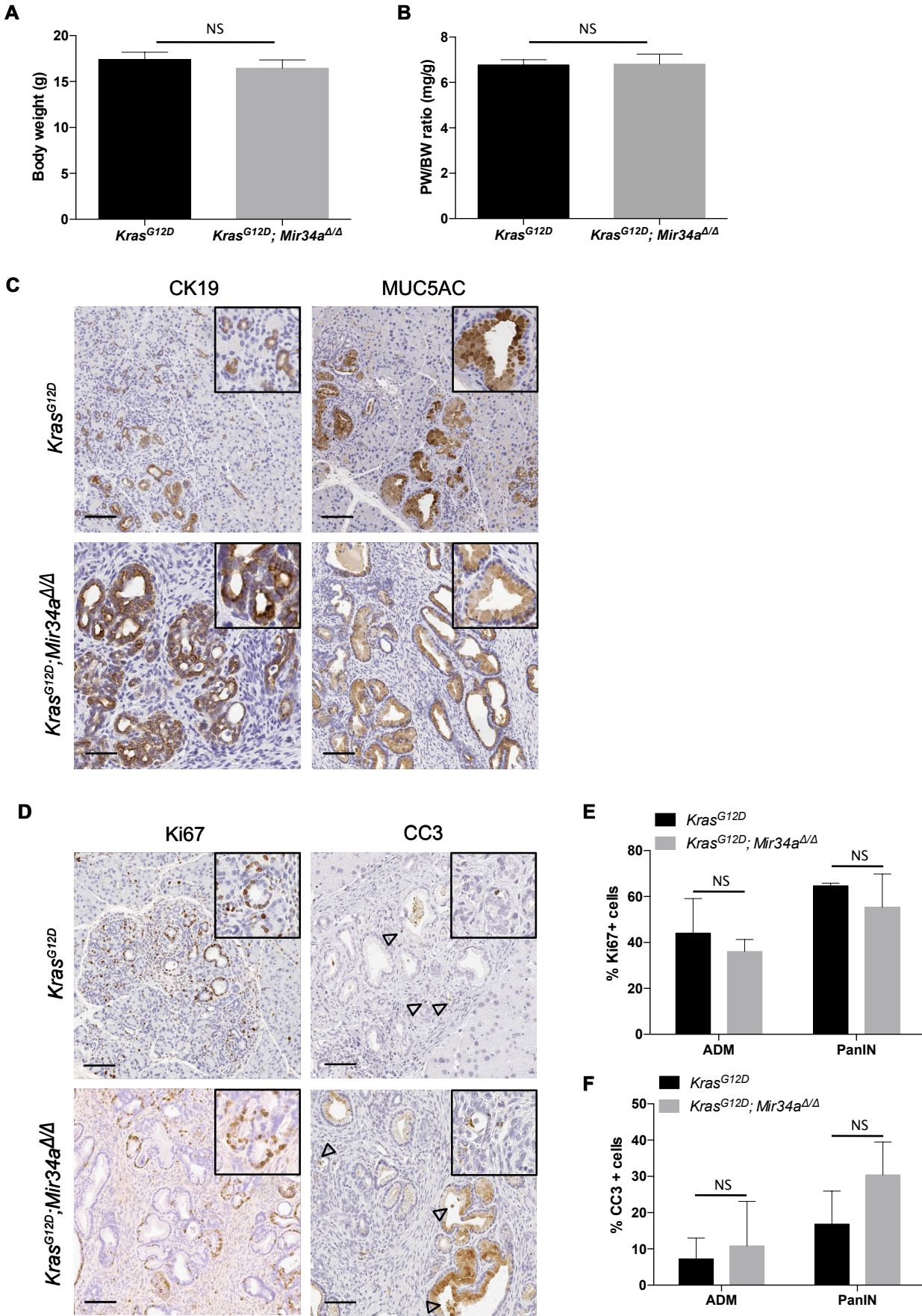
F



G

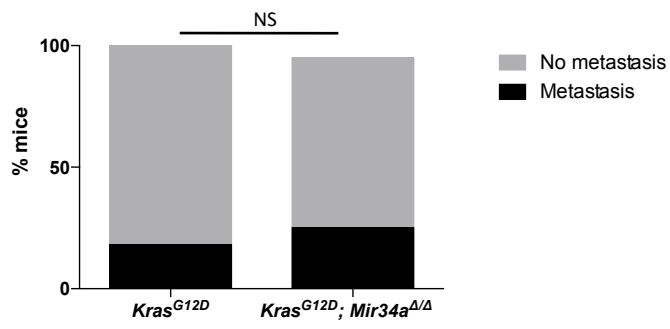


Supplementary Figure 2

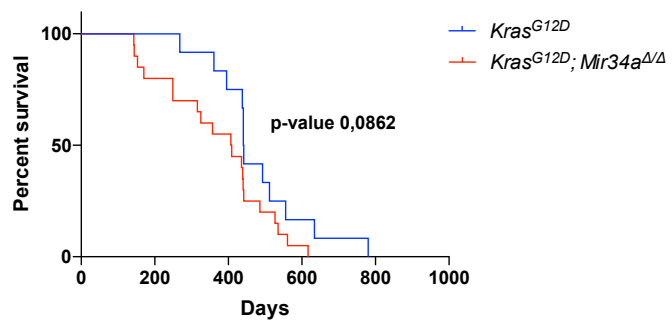


Supplementary Figure 3

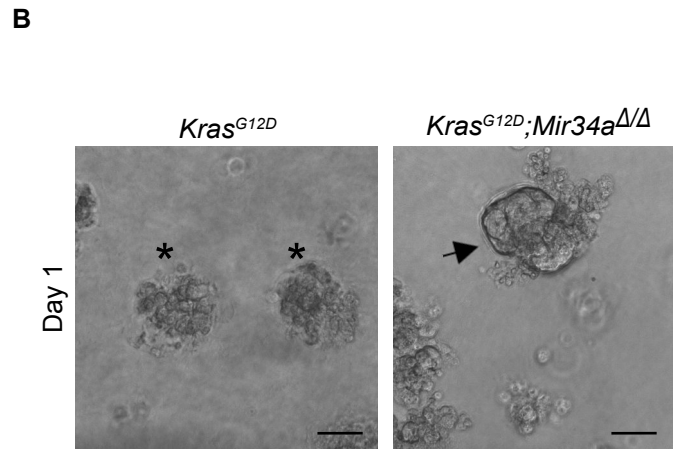
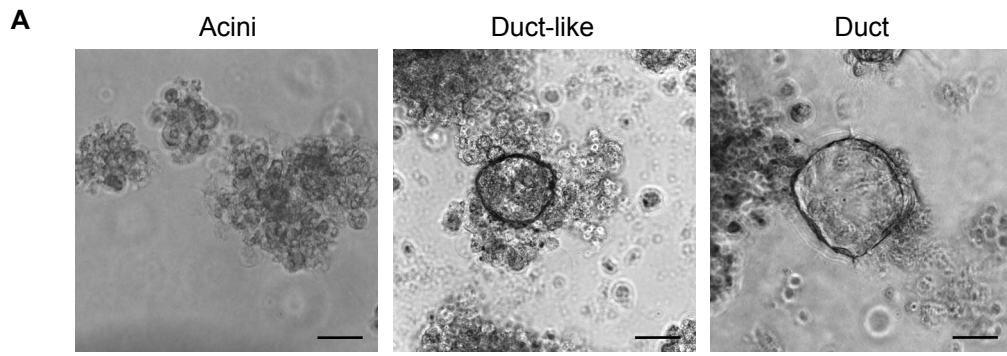
A



B



Supplementary Figure 4



Supplementary Table 1. NES and FDR values for GSEA.

Pathways	Cell type	NES	FDR
HALLMARK_TNFA_SIGNALING_VIA_NFKB	Acini	1,80	0,02
	Ductal	0,0	0,0
	PDAC	1,96	0,002
HALLMARK_INFLAMMATORY_RESPONSE	Acini	1,69	0,02
	Ductal	0,0	9.986991E-4
	PDAC	1,92	0,001
HALLMARK_KRAS_SIGNALING_UP	Acini	1,25	0,15
	Ductal	0,0	0,003
	PDAC	1,53	0,03
HALLMARK_EPITHELIAL_MESENCHYMAL_TRANSITION	Acini	1,41	0,08
	Ductal	0,001	0,01
	PDAC	1,08	0,42
HALLMARK_TGF_BETA_SIGNALING	Acini	-1,02	0,86
	Ductal	0,02	0,02
	PDAC	1,43	0,06
HALLMARK_IL6_JAK_STAT3_SIGNALING	Acini	1,38	0,09
	Ductal	0,04	0,04
	PDAC	1,60	0,02