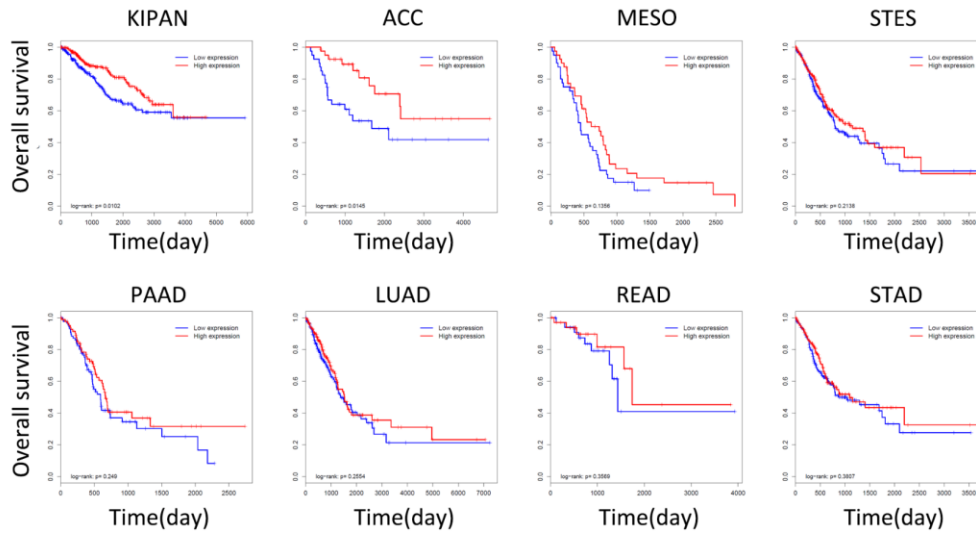
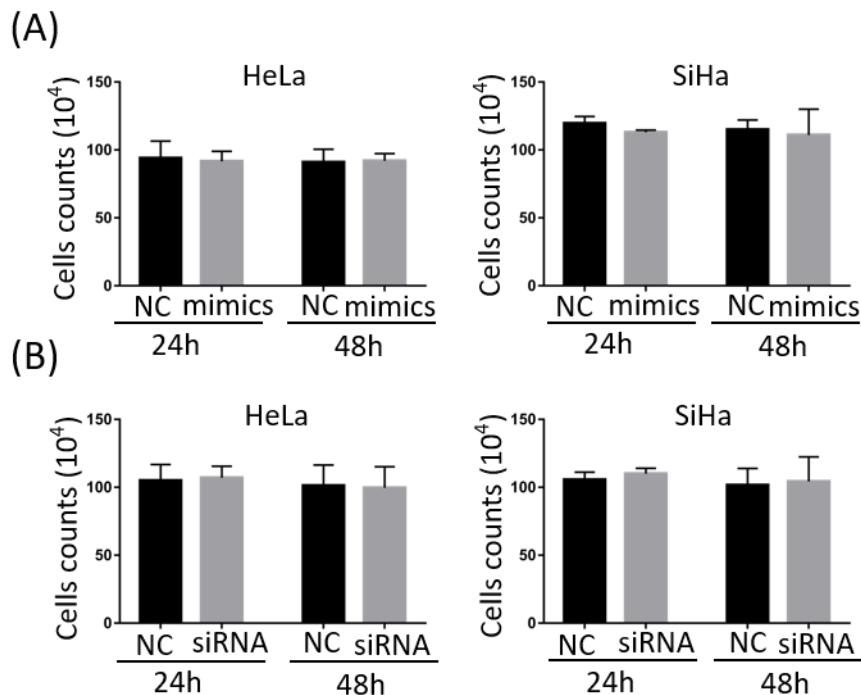


Supplementary Figures and Table



Supplementary Figure S1. Survival curves of different cancers with low/high miR-362 expression from TCGA database.



Supplementary Figure S2. There was no significant difference in the number of cells in each group after mitomycin C treatment.

(A) Cells counts at 24h and 48h after mitomycin C treatment in NC and miR-362-3p mimics groups. (B) Cells counts at 24h and 48h after mitomycin C treatment in NC and BCAP31 siRNA groups.

Supplementary Table S1. The top 30 enriched gene sets in the BCAP31 expression phenotype of cervical cancer data from TCGA

Gene set name	NES	NOM p-val	FDR q-val
PROTEIN_FOLDING	-2.28	<0.001	<0.001
RESPONSE_TO_OXIDATIVE_STRESS	-2.26	<0.001	<0.001
MITOCHONDRIAL_PART	-2.23	<0.001	<0.001
MITOCHONDRIAL_ENVELOPE	-2.19	<0.001	<0.001
MITOCHONDRION	-2.19	<0.001	<0.001
MITOCHONDRIAL_MEMBRANE_PART	-2.14	<0.001	0.002
ENVELOPE	-2.13	<0.001	0.004
ORGANELLE_ENVELOPE	-2.13	<0.001	0.004
MITOCHONDRIAL_MEMBRANE	-2.13	<0.001	0.003
GTP_BINDING	-2.08	<0.001	0.005
PROTEASOME_COMPLEX	-2.06	<0.001	0.006
GUANYL_NUCLEOTIDE_BINDING	-2.06	<0.001	0.007
ORGANELLE_MEMBRANE	-2.06	<0.001	0.006
HYDROGEN_ION_TRANSMEMBRANE_	-2.05	<0.001	0.007
TRANSPORTER_ACTIVITY			
UNFOLDED_PROTEIN_BINDING	-2.05	<0.001	0.006
ELECTRON_CARRIER_ACTIVITY	-2.04	<0.001	0.01
MITOCHONDRIAL_INNER_MEMBRANE	-2.03	<0.001	0.01
RIBOSOME	-2.03	<0.001	0.01
PHOSPHOTRANSFERASE_ACTIVITY_P	-2.02	<0.001	0.01
HOSPHATE_GROUP_AS_ACCEPTOR			
RIBONUCLEOPROTEIN_COMPLEX	-1.98	0.02	0.023
MACROMOLECULE_CATABOLIC_PROC	-1.97	<0.001	0.023
ESS			
MITOCHONDRION_ORGANIZATION_A	-1.95	<0.001	0.025
ND_BIOGENESIS			

MITOCHONDRIAL_RESPIRATORY_CHA IN	-1.95	<0.001	0.024
INDUCTION_OF_APOPTOSIS_BY_INTR ACELLULAR_SIGNALS	-1.94	<0.001	0.025
ORGANELLE_INNER_MEMBRANE	-1.94	0.02	0.025
INDUCTION_OF_APOPTOSIS_BY_EXTR ACELLULAR_SIGNALS	-1.93	<0.001	0.026
NEGATIVE_REGULATION_OF_TRANSC RIPTION_FACTOR_ACTIVITY	-1.92	<0.001	0.028
MONOVALENT_INORGANIC_CATION_ TRANSMEMBRANE_TRANSPORTER_A CTIVITY	-1.92	<0.001	0.028
NUCLEOBASENUCLEOSIDENUCLEOTI DE_KINASE_ACTIVITY	-1.92	<0.001	0.026
RIBONUCLEASE_ACTIVITY	-1.92	0.02	0.027

NES: normalized enrichment score; NOM: nominal; FDR: false discovery rate. Gene sets with NOM P-values <0.05 and FDR q-values <0.25 were considered significantly enriched.