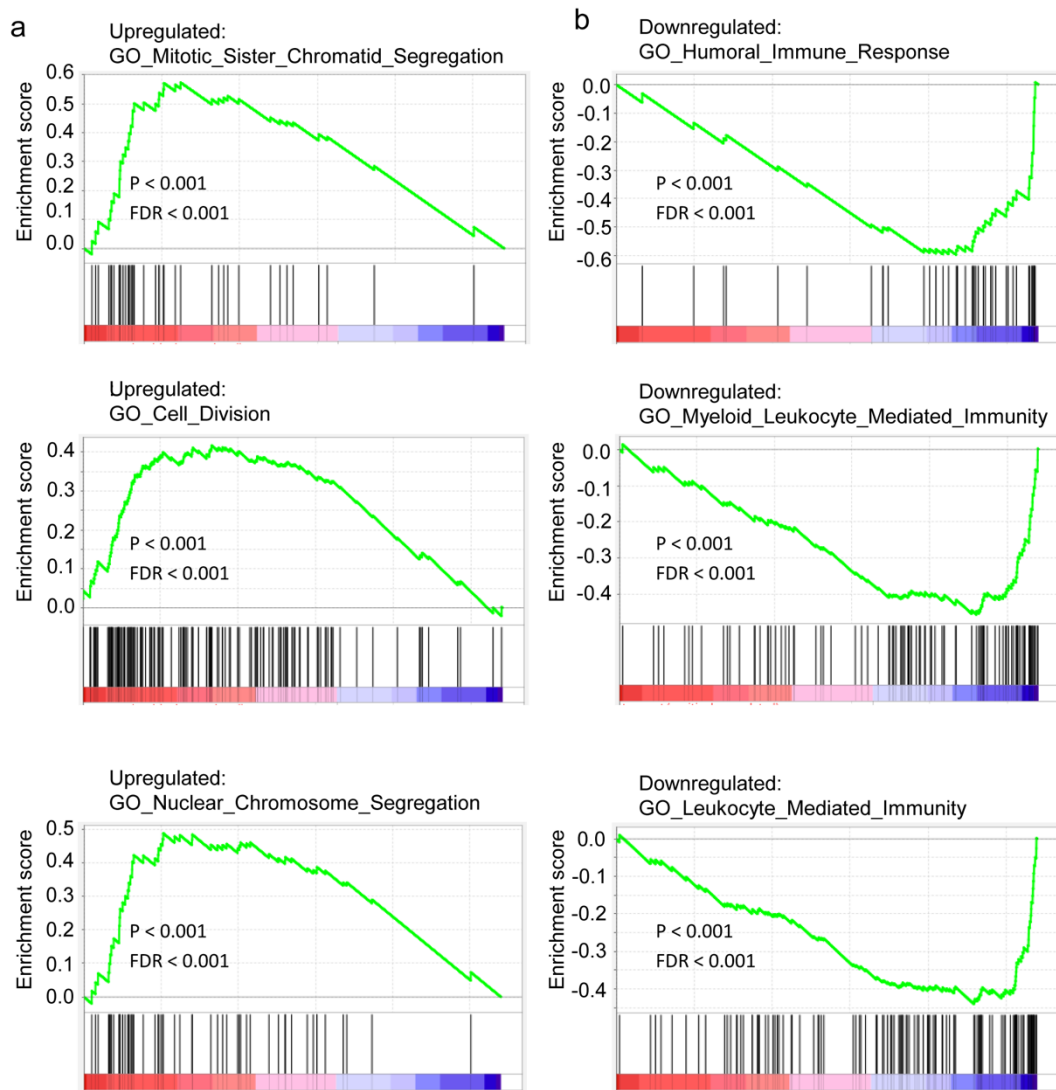


Figure S3



**Fig. S3 IMRCs possess unique gene expression characteristics.**

**a** Gene set enrichment analysis (GSEA) of the top up-regulated gene signature in IMRCs, compared with primary UCMSCs. **b** Gene set enrichment analysis (GSEA) of the top down-regulated gene signature in IMRCs, compared with primary UCMSCs.