

Additional file 5, Fig. S4

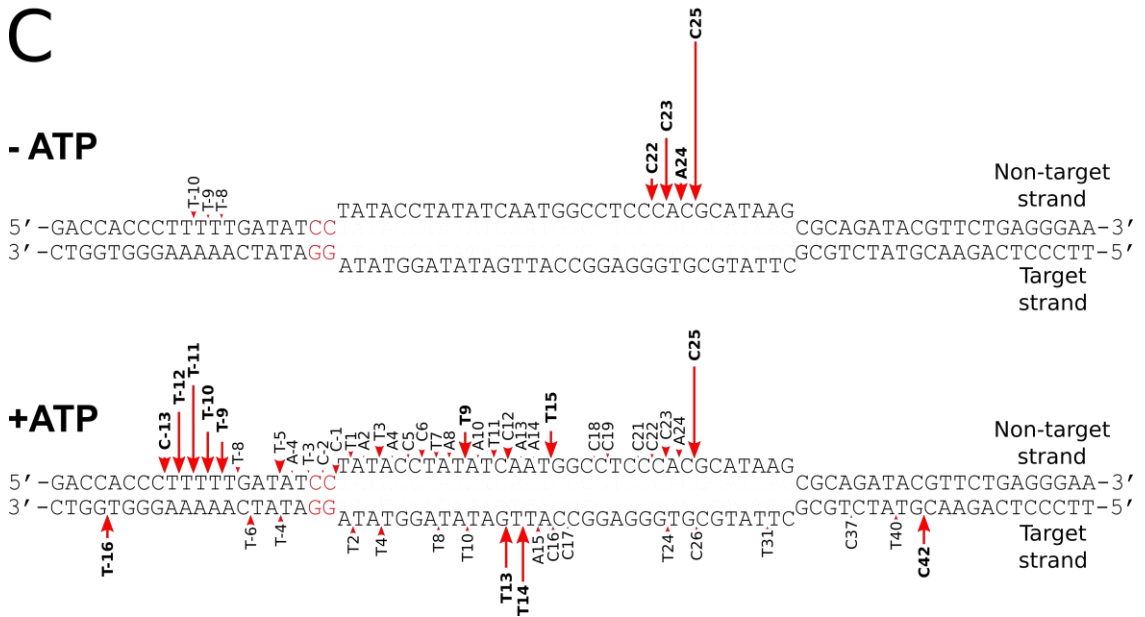
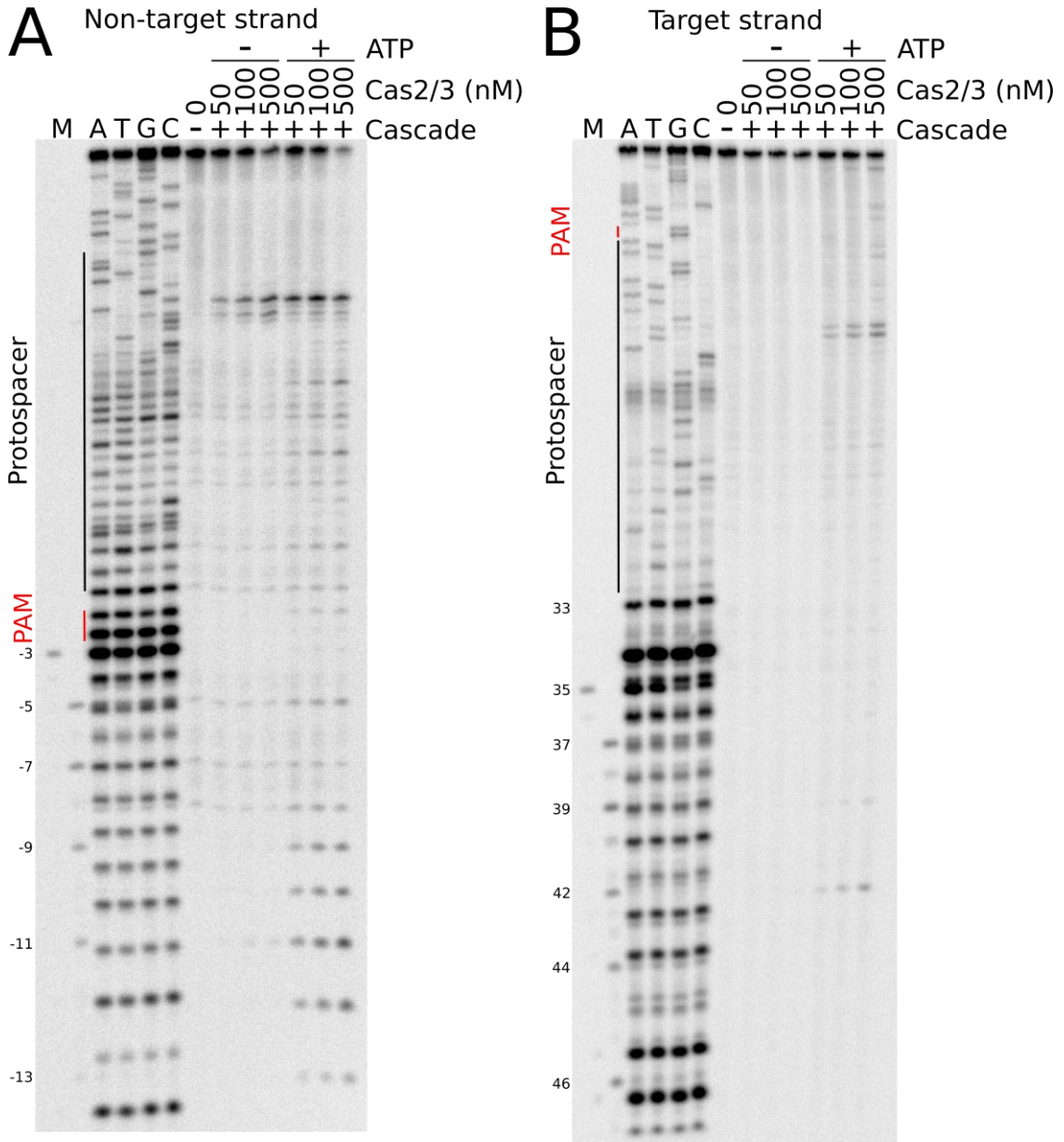


Fig. S4. *Cas2/3 cleavage profile of Cascade-bound target dsDNA. (A and B) Denaturing polyacrylamide gels of Cas2/3-cleaved oligoduplex.* SP-CC oligoduplex ³²P-5'-labelled on either the non-target (**A**) or target (**B**) DNA strand was pre-incubated with WT Cascade in the absence (-) or presence (+) of ATP and cleavage was initiated by introducing indicated amounts of Cas2/3. Cleavage reactions were conducted at 37°C for 1 hour. A, T, G, C lanes represent sequencing reactions for the non-target and target strand of the SP-CC by the ³²P-5'-labelled TS153 and TS166 oligonucleotides, respectively. M – ladders for smaller cleavage products (respective ³²P-5'-labeled-oligonucleotides indicated in the Additional file 13: Table S3). Black and red solid lines designate protospacer and PAM boundaries, respectively. (**C**) *Cleavage products mapped within the SP-CC oligoduplex sequence.* Arrows indicate cleavage positions, the height of the arrow correlates with a relative amount of cleavage product after 1-hour incubation with 500 nM Cas2/3 in the absence (-ATP) or presence (+ATP) of ATP.