

Supplementary Materials

Figure S1:

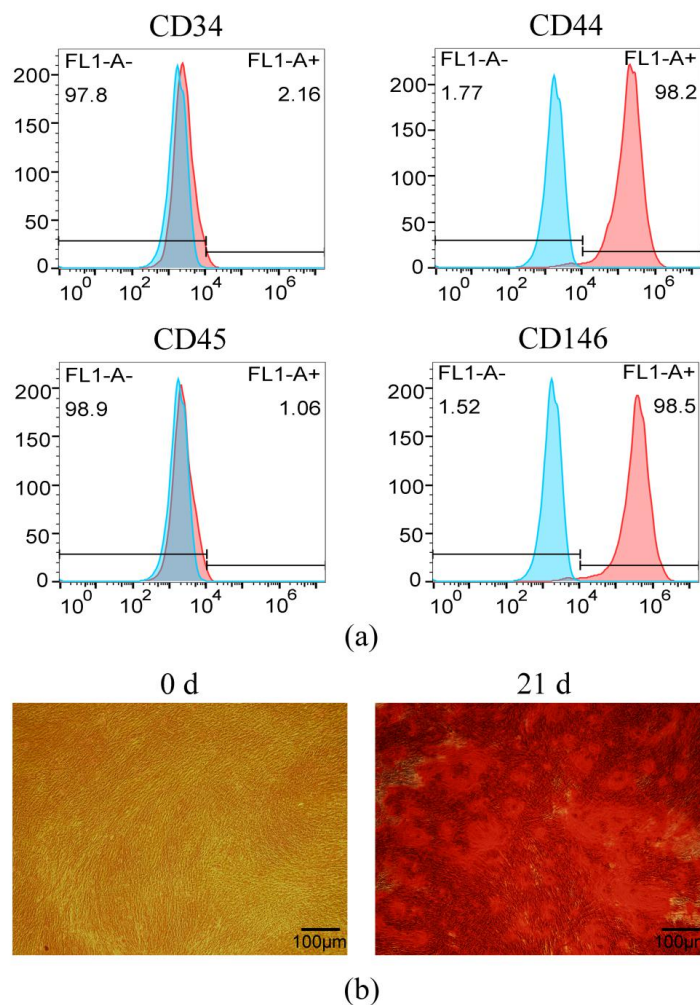


Figure S1: Identification of human BMSCs. (a) Flow cytometry analysis showed that the cells expressed CD44 and CD146 but did not express CD34 or CD45. (b) Alizarin red staining was positive after 21 d of osteogenic induction. These findings confirmed that the cells have characteristics consistent with those of BMSCs.