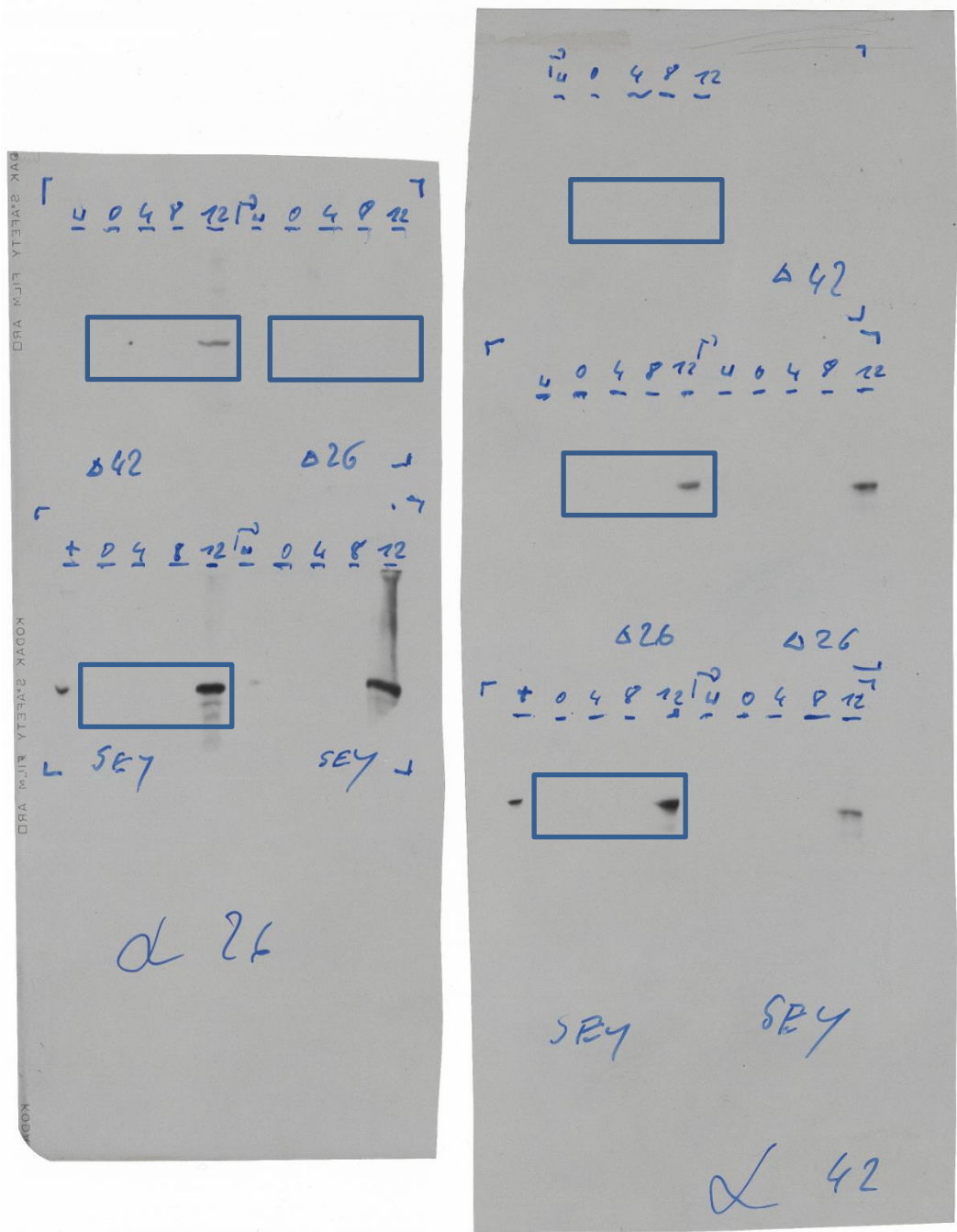


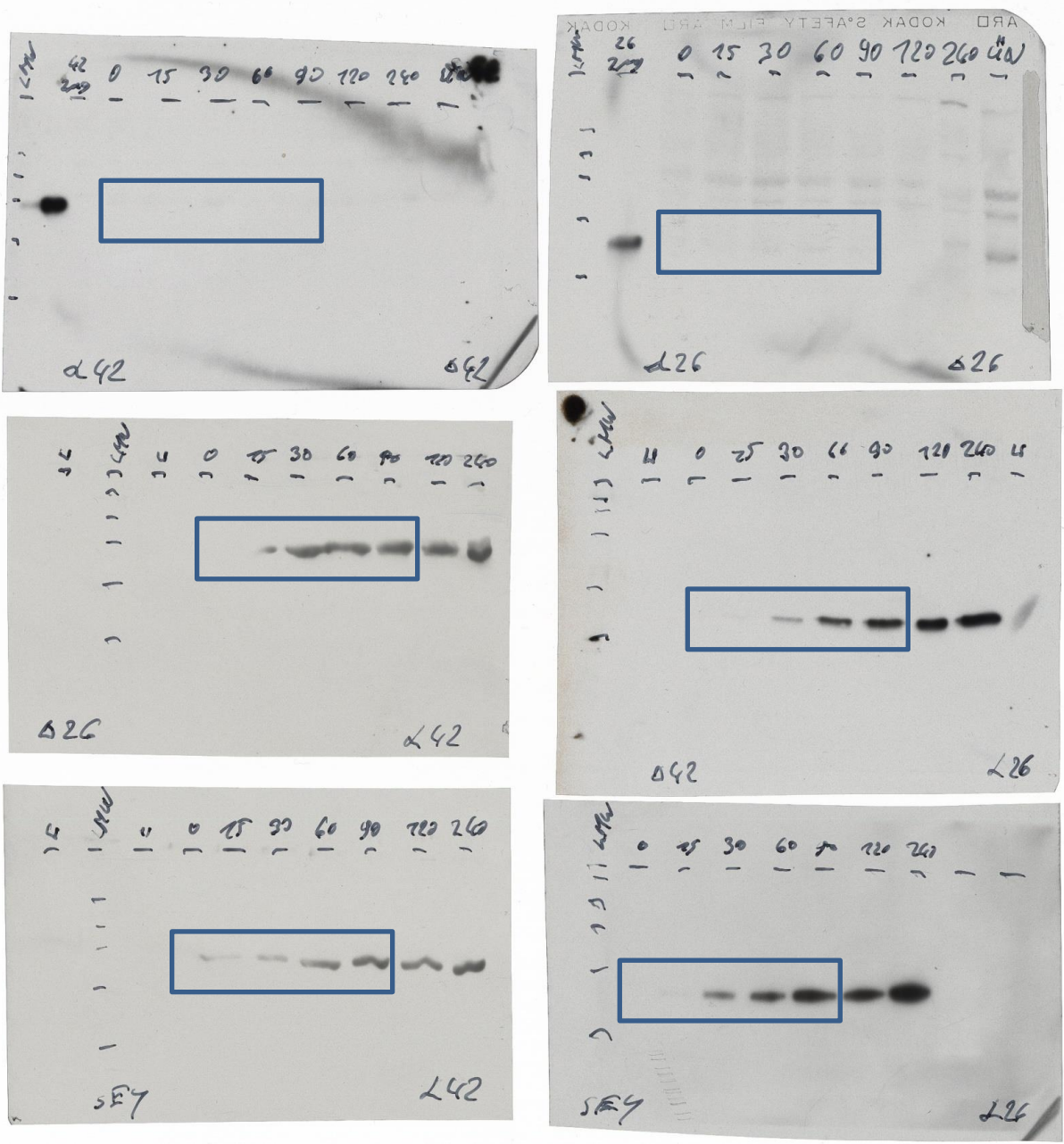
Figure 5B



Scans of Western blots.

SEY6211 and Hsp42 or Hsp26 deletion strains were cultivated at 30°C. Samples containing the same number of cells (0.5×10^7) were withdrawn at the time points indicated (in hours) and lysed by addition of NaOH and TCA. After separation by SDS-PAGE, Hsp26 or Hsp42 (α indicates the antibody used respectively) was detected by Western blot. $_$ indicates empty lanes. + indicates 25ng of purified Hsp26 or Hsp42 respectively. The frames mark the sections shown in the manuscript and additional experiments.

Figure 5C



Scans of Western blots.

SEY6211 and Hsp42 or Hsp26 deletion strains were cultivated at 37°C. Samples containing the same number of cells (0.5×10^7) were withdrawn at the time points indicated (in min) and lysed by addition of NaOH and TCA. After separation by SDS-PAGE, Hsp26 or Hsp42 (α indicates the antibody used respectively) was detected by Western blot. $_$ indicates empty lanes. The frames mark sections as shown in the manuscript.