

APPENDIX FOR

Cyclin B1 scaffolds MAD1 at the kinetochore corona to activate the mitotic checkpoint

Lindsey A Allan¹, Magda Reis¹, Giuseppe Ciossani², Pim J Huis in 't Veld², Sabine Wohlgemuth², Geert JPL Kops³, Andrea Musacchio² and Adrian T Saurin¹

CONTENTS:

- APPENDIX FIGURE S1
- APPENDIX FIGURE S1 LEGEND

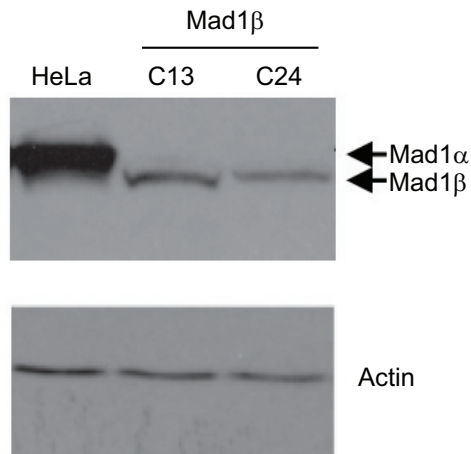
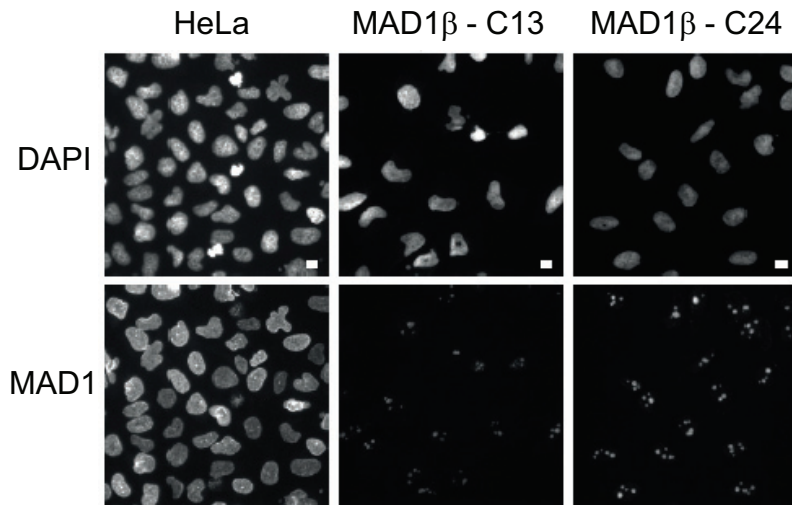
A**B**

Figure S1. Validation of Mad1 α knockout cell clones. A,B. Western blot (A) and immunofluorescence images (B) of MAD1 in control on MAD1 α knockout HeLa cells (2 clones: MAD1 α -C13 and C24). The lack of nuclear staining demonstrates a MAD1 α knockout because MAD1 β lacks a key NLS and is therefore cytoplasmic (Sze et al, 2008). Note, the cytoplasmic signal is not visible because immunofluorescence was performed on cells that were pre-extracted in 0.1% triton buffer (see methods).