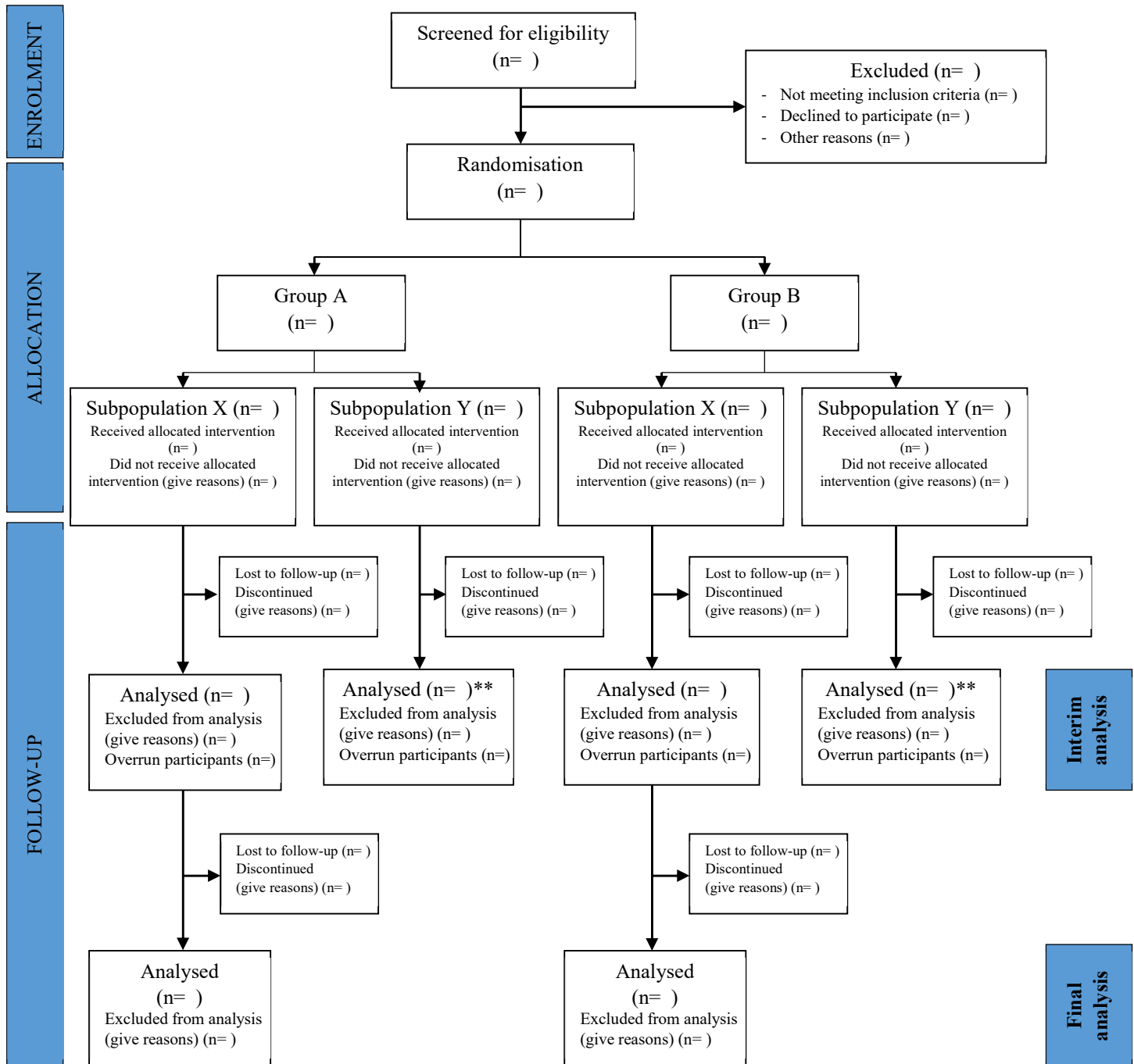


Appendix E: An example of a CONSORT flowchart for reporting a population enrichment adaptive design (assuming enrichment was done at an interim analysis)



** This can be extended to the final analysis if an additional analysis was performed after an interim analysis when further recruitment to a specific subpopulation was stopped (e.g. to include overrun participants who did not contribute to the interim analysis or long-term outcome data)