

## SUPPLEMENTARY ONLINE INFORMATION

### Mortality and revascularization among myocardial infarction patients with schizophrenia: a population-based cohort study

\*Tanya S. Hauck MD PhD

Centre for Addiction and Mental Health, Department of Psychiatry, Institute of Health Policy Management and Evaluation, University of Toronto

T: (416) 535-8501 x34394

tanya.hauck@camh.ca

Centre for Addiction & Mental Health

33 Russell St, T306

Toronto, ON, M5S 2S1

Ning Liu MSc

Institute of Health Policy Management and Evaluation, University of Toronto; ICES

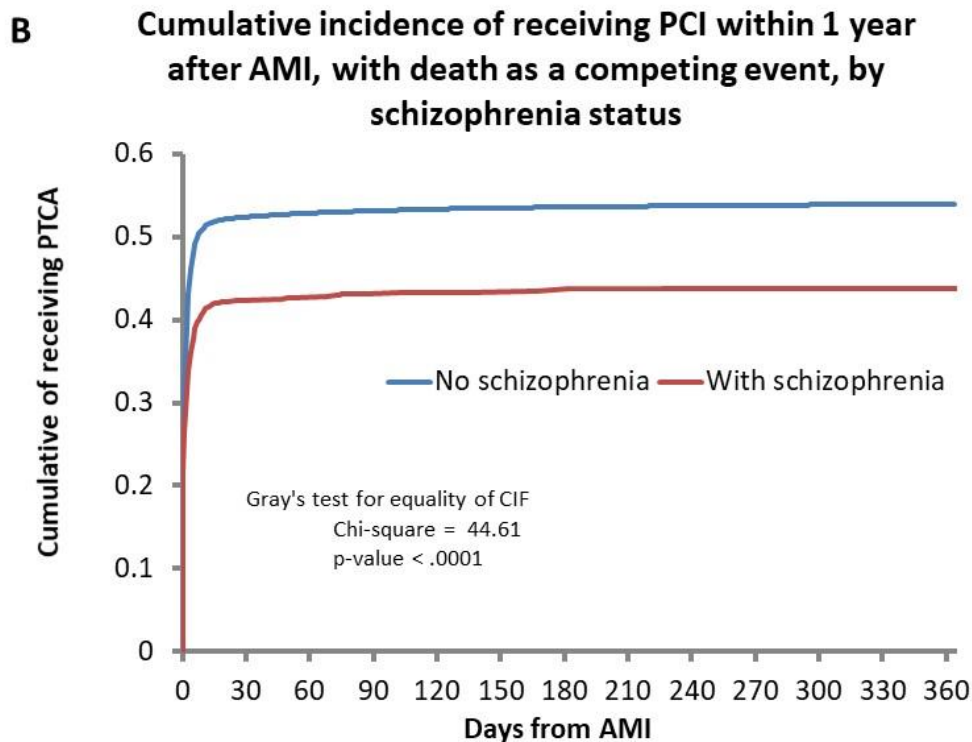
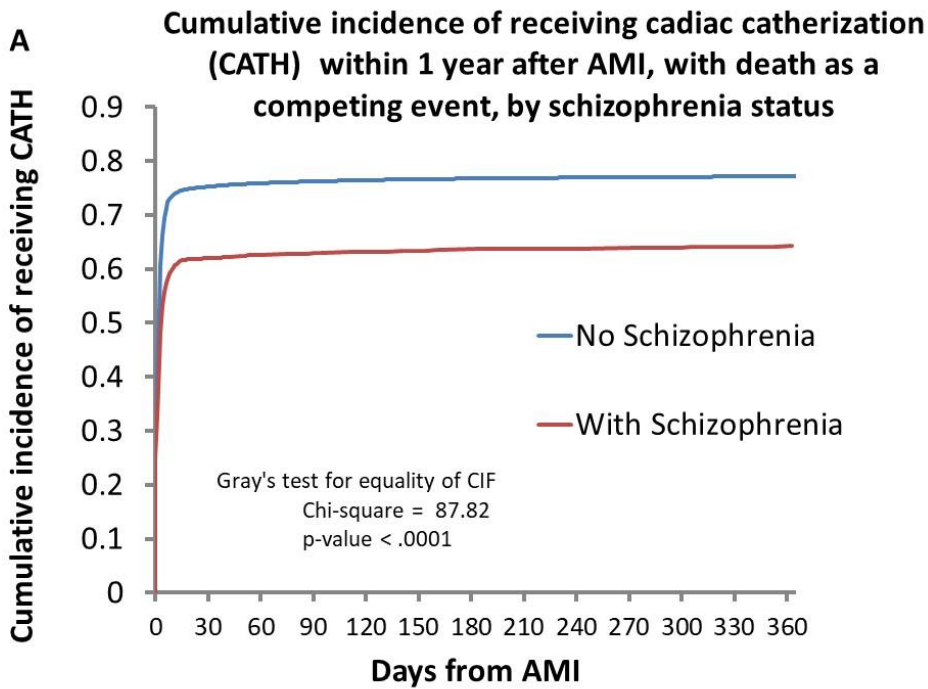
Harindra C. Wijeyesundera MD PhD

Schulich Heart Centre, Sunnybrook Health Sciences Centre, Sunnybrook Research Institute, Department of Medicine & Institute of Health Policy, Management and Evaluation, University of Toronto; ICES

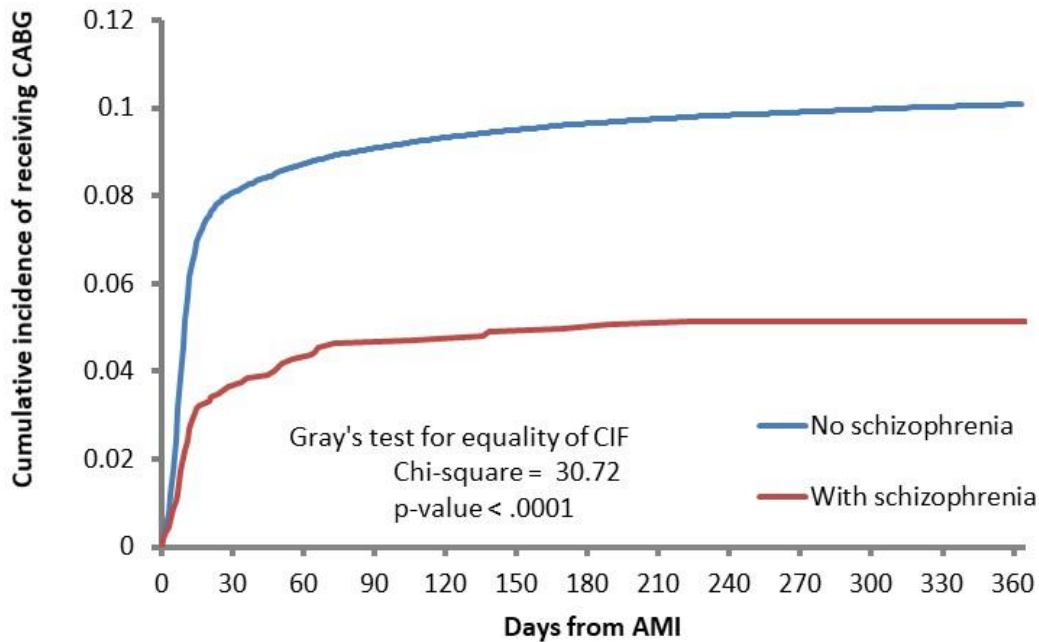
Paul Kurdyak MD PhD

Centre for Addiction and Mental Health, Department of Psychiatry and Institute for Health Policy, Management and Evaluation, University of Toronto; ICES

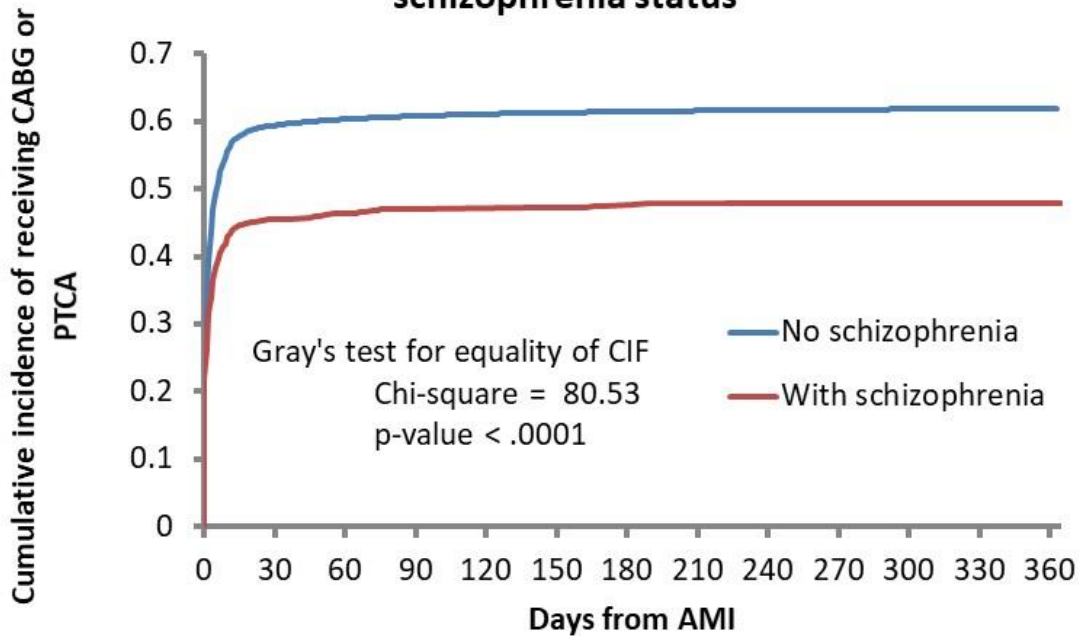
**SUPPLEMENTARY FIGURE 1** Cumulative probability of receiving procedures in patients with and without schizophrenia. (A) Cardiac catheterization (B) PCI (C) CABG and (D) PCI or CABG.



**C** Cumulative incidence of receiving CABG within 1 year after AMI, with death as a competing event, by schizophrenia status



**D** Cumulative incidence of receiving CABG or PCI within 1 year after AMI, with death as a competing event, by schizophrenia status



**SUPPLEMENTARY TABLE 1: Secondary outcomes.**

<b>Second AMI</b>	<b>No schizophrenia (N=107,465)</b>	<b>Schizophrenia (N=1,145)</b>	<b>P</b>
2nd AMI within 365 days from the index AMI †	6,107 (5.7%)	69 (6.0%)	0.618
<b>Length of stay during the index AMI care episode</b>			
Mean ± SD	7.53 ± 12.14	8.12 ± 11.81	0.104
Median (IQR)	4 (3-8)	5 (3-9)	0.003

**SUPPLEMENTARY TABLE 2: Medication prescriptions in individuals with and without schizophrenia.**

<b>VARIABLE</b>	<b>No schizophrenia</b>	<b>With schizophrenia</b>	<b>TOTAL</b>	<b>p-VALUE</b>
	N=61,915	N=540	N=62,455	
<b>Within 3 months after AMI discharge date</b>				
Received ACE	33,186 (53.6%)	269 (49.8%)	33,455 (53.6%)	0.079
Received ARB	10,270 (16.6%)	57 (10.6%)	10,327 (16.5%)	<.001
Received Beta blocker	42,235 (68.2%)	326 (60.4%)	42,561 (68.1%)	<.001
Received Statins	47,072 (76.0%)	361 (66.9%)	47,433 (75.9%)	<.001
Received any of these 4 drugs	52,500 (84.8%)	420 (77.8%)	52,920 (84.7%)	<.001
<b>Within 1 year after AMI discharge date</b>				
Received ACE	35,459 (57.3%)	285 (52.8%)	35,744 (57.2%)	0.036
Received ARB	12,862 (20.8%)	69 (12.8%)	12,931 (20.7%)	<.001
Received Beta blocker	44,340 (71.6%)	339 (62.8%)	44,679 (71.5%)	<.001
Received Statins	48,697 (78.7%)	380 (70.4%)	49,077 (78.6%)	<.001
Received any of these 4 drugs	53,083 (85.7%)	428 (79.3%)	53,511 (85.7%)	<.001

**SUPPLEMENTARY TABLE 3: Definitions of procedures and outcomes based on billing codes in administrative datasets.**

<b>Procedure</b>	<b>Fee Code</b>
Cardiac Catheterization	<b>OHIP:</b> G297, Z442 <b>CIHI:</b> 2HZ28, 3IP10, 3IS10, 3IP10VC, 3IP10VX, 3IP10VY, 3IP10VZ, 3IS10VA, 3IS10VC, 3IS10VN, 2HZ28GPPL
PCI	<b>OHIP:</b> Z434 <b>CIHI:</b> 1IJ50, 1IJ57, 1IJ50GQBD, 1IJ50GQBF, 1IJ50GQNR, 1IJ50GQOA, 1IJ50GQOB, 1IJ50GQOD, 1IJ50GQOE, 1IJ50GSBD, 1IJ50GTBD, 1IJ50GTBF, 1IJ50GTOA, 1IJ50GTOB, 1IJ50GTOD, 1IJ50GTOE, 1IJ50GUBD, 1IJ50GUBF, 1IJ50GUOA, 1IJ50GUOB, 1IJ50GUOD, 1IJ50GUE, 1IJ57GQAG, 1IJ57GQAGA, 1IJ57GQAGK, 1IJ57GQAGN, 1IJ57GQBD, 1IJ57GQFV, 1IJ57GQFVA, 1IJ57GQFVK, 1IJ57GQFVN, 1IJ57GQGX, 1IJ57GQGXA, 1IJ57GQGXK, 1IJ57GQGXN, 1IJ57GQQA, 1IJ57GQOB, 1IJ57GQOBA, 1IJ57GQOBK, 1IJ57GQOBN, 1IJ57GQOC, 1IJ57GQOCA, 1IJ57GQOCK, 1IJ57GQOCN, 1IJ57GSAG, 1IJ57GSAGA, 1IJ57GSAGK, 1IJ57GSAGN, 1IJ57GSFV, 1IJ57GSFVA, 1IJ57GSFVK, 1IJ57GSFVN, 1IJ57GSGX, 1IJ57GSGXA, 1IJ57GSGXK, 1IJ57GSGXN, 1IJ57LAAG, 1IJ57LAAGA, 1IJ57LAAGK, 1IJ57LAAGN, 1IJ57LAFV, 1IJ57LAFVA, 1IJ57LAFVK, 1IJ57LAFVN, 1IJ57LAGX, 1IJ57LAGXA, 1IJ57LAGXK, 1IJ57LAGXN, 1IJ57LAOB, 1IJ57LAOBA, 1IJ57LAOBK, 1IJ57LAOBN, 1IJ57LAOC, 1IJ57LAOCA, 1IJ57LAOCK, 1IJ57LAOCN, 1IJ57VSAG, 1IJ57VSAGA, 1IJ57VSAGK, 1IJ57VSAGN, 1IJ57VSFV, 1IJ57VSFVA, 1IJ57VSFVK, 1IJ57VSFVN, 1IJ57VSGX, 1IJ57VSGXA, 1IJ57VSGXK, 1IJ57VSGXN
CABG	<b>OHIP:</b> R742, R743 <b>CIHI:</b> 1IJ76, 1IJ76BQXXA, 1IJ76DAXXA, 1IJ76DAXXG, 1IJ76DAXXN, 1IJ76DAXXQ, 1IJ76LAXXA, 1IJ76LAXXG, 1IJ76LAXXN, 1IJ76LAXXQ, 1IJ76WKXXA, 1IJ76WKXXG, 1IJ76WKXXN, 1IJ76WKXXQ
Second MI	Hospitalization with most responsible diagnosis as I21 or I22

OHIP: Ontario Health Insurance Plan

CIHI: Canadian Institute of Health Information