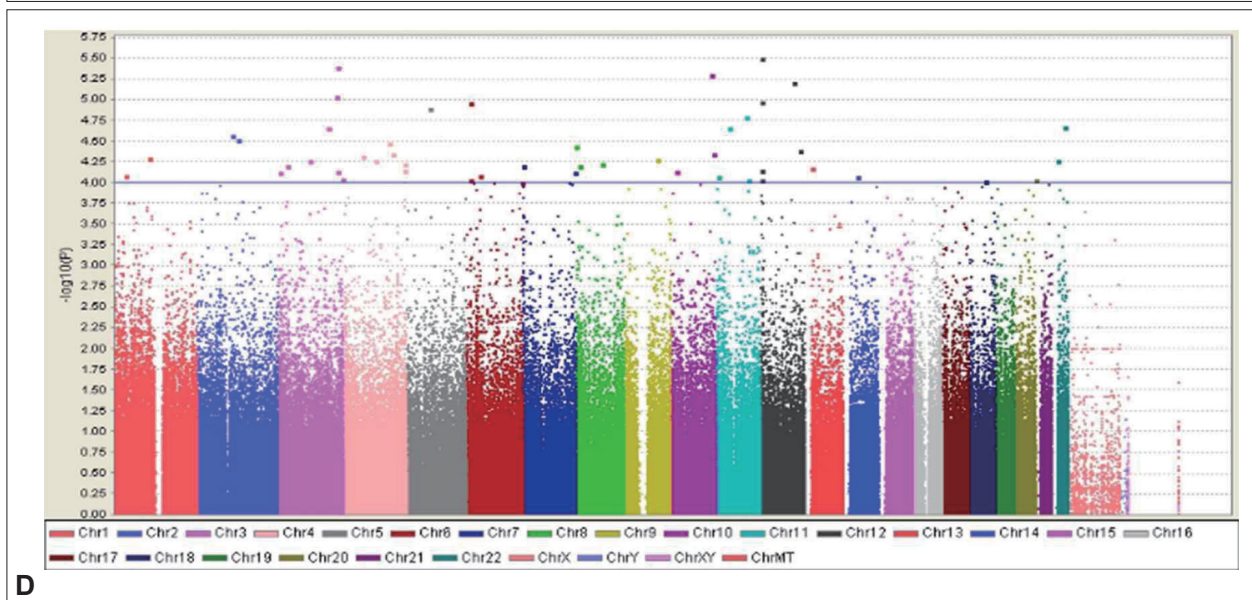
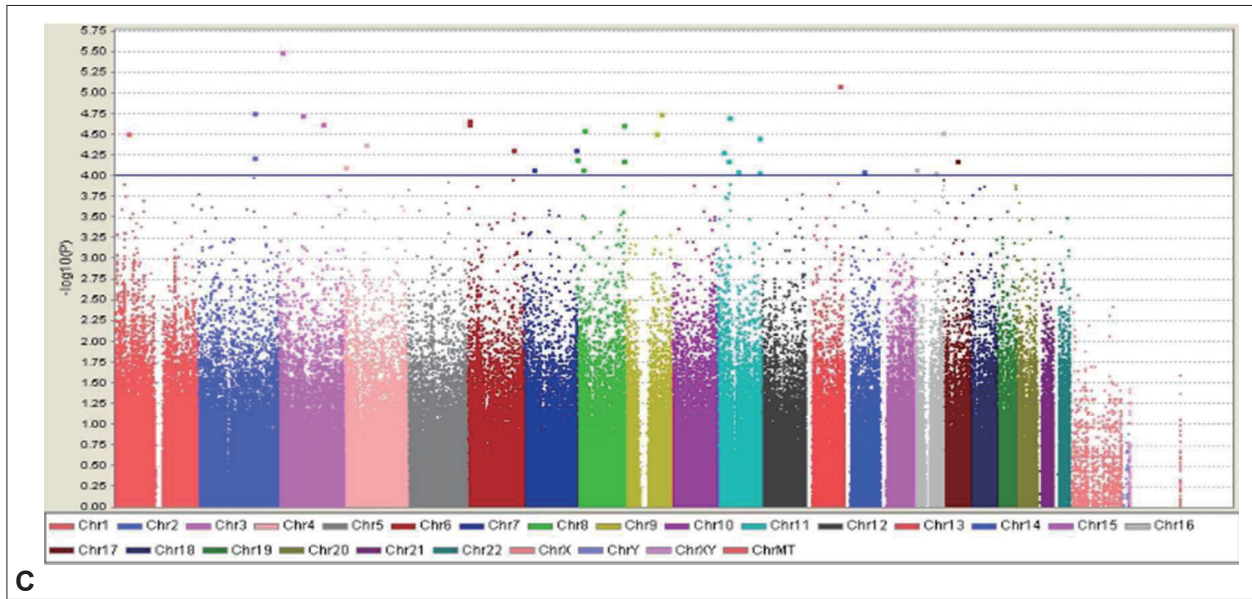
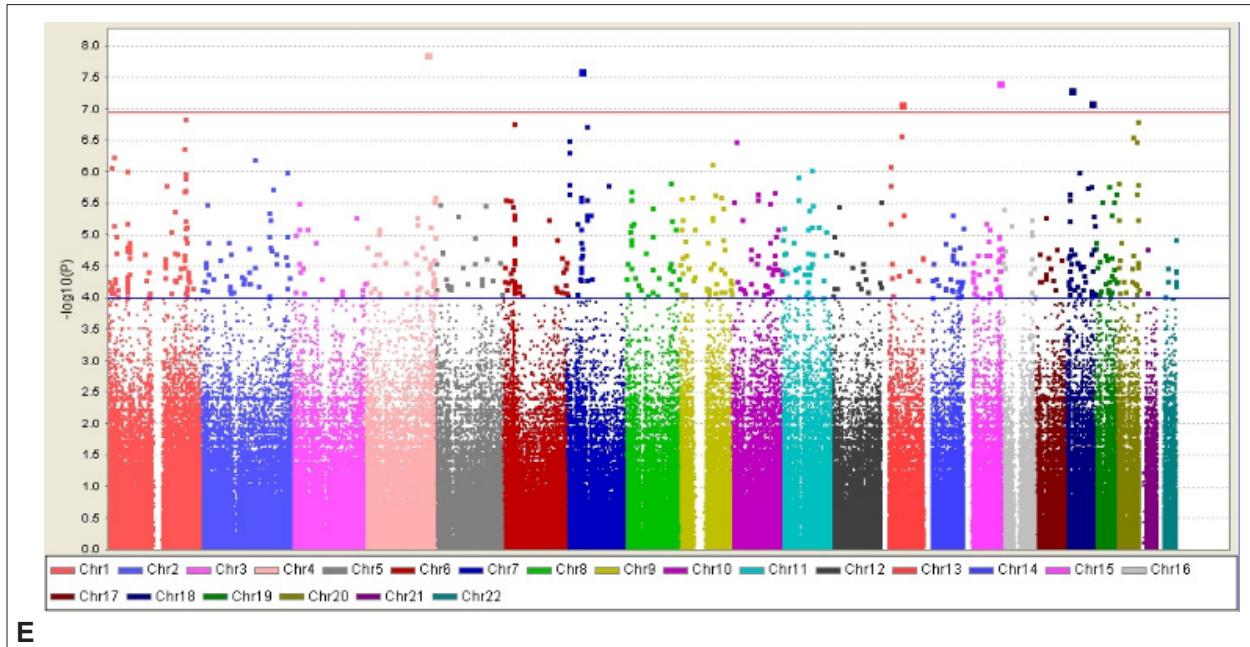


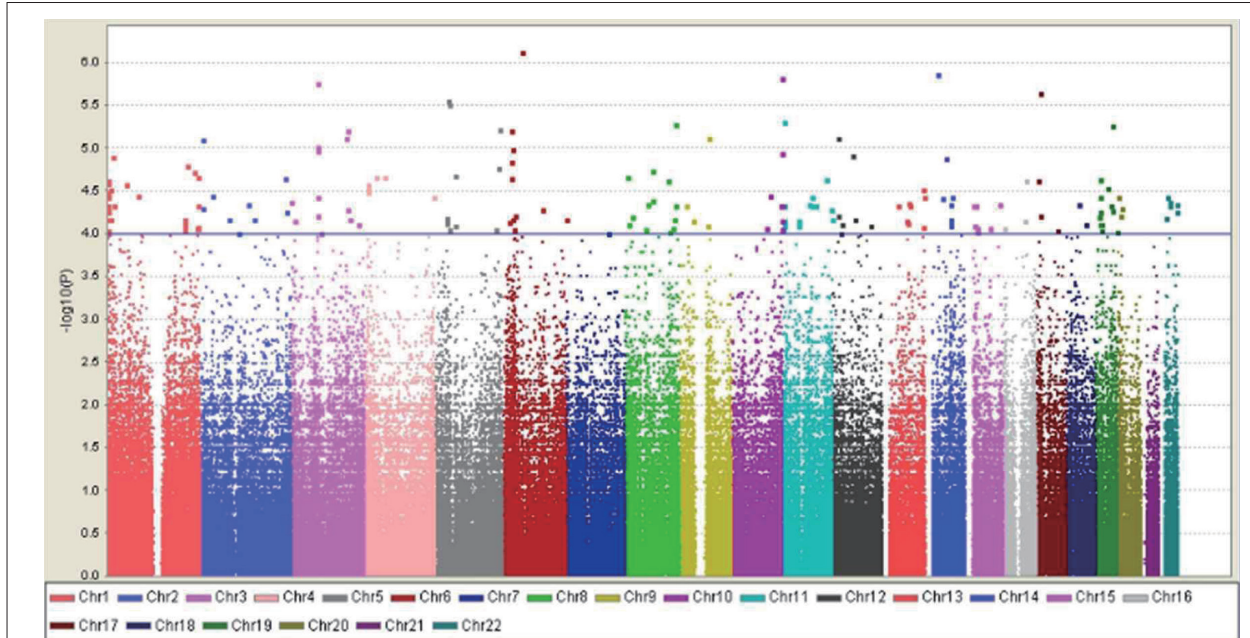
Supplementary Fig. 1. Manhattan plots. A: Manhattan plot of case-control GWAS. B: Manhattan plot of family-based GWAS. Chr: chromosome, GWAS: genome-wide association study.



Supplementary Fig. 1. Manhattan plots. C: Manhattan plot of case-control genome-wide QTL analysis for inattention symptom count. D: Manhattan plot of case-control genome-wide QTL analysis for hyperactivity-impulsivity symptom count. Chr: chromosome, QTL: quantitative trait locus.



E



F

Supplementary Fig. 1. Manhattan plots. E: Manhattan plot of family-based genome-wide QTL analysis for inattention symptom count. F: Manhattan plot of family-based genome-wide QTL analysis for hyperactivity-impulsivity symptom count. Chr: chromosome, QTL: quantitative trait locus.