

Figure S1

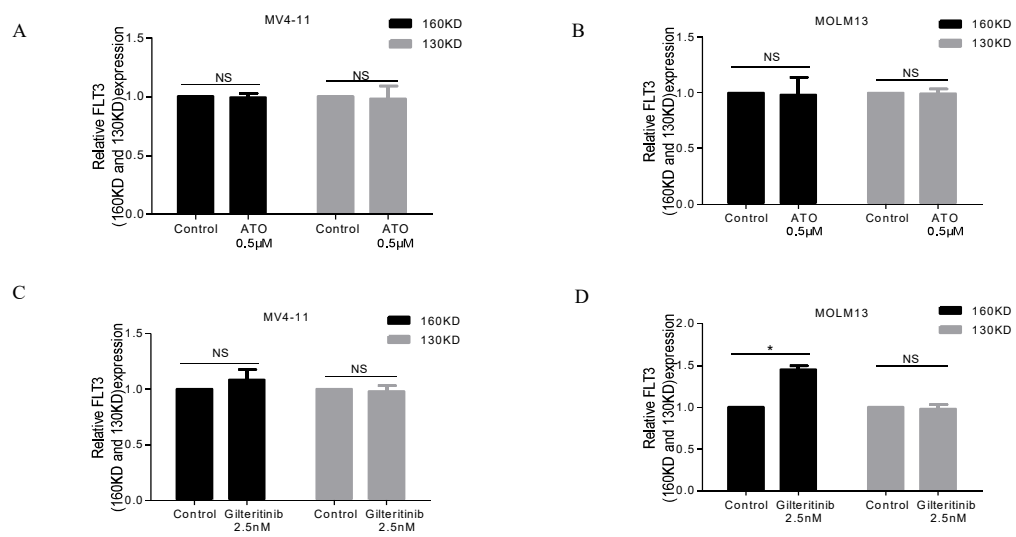


Fig. S1 Analysis on FLT3 of 160KD and 130KD in ATO and Gilteritinib treated MV4-11 and MOLM13 cells. A-B MV4-11 and MOLM13 cells were treated with ATO (0.5 μ M) for 48h and data of protein levels of FLT3 are shown as the mean \pm SD. **C-D** MV4-11 and MOLM13 cells were treated with Gilteritinib (2.5nM) for 48h and data of protein levels of FLT3 are shown as the mean \pm SD. *P<0.05.

Figure S2

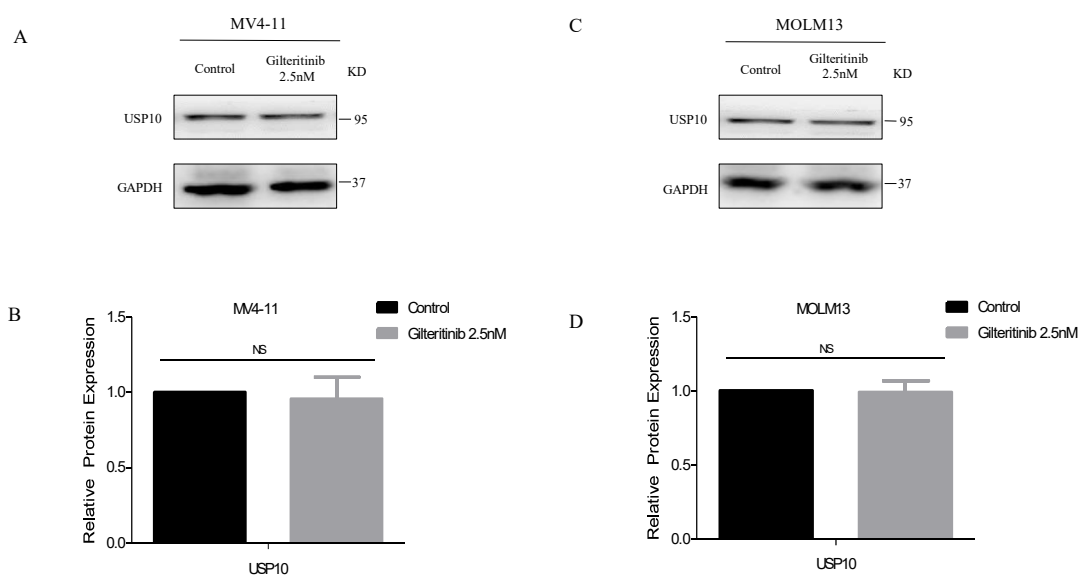


Fig. S2 USP10 protein was not affected by Gilteritinib. A-D, MV4-11 and MOLM13 cells were treated with Gilteritinib (2.5nM) for 48h and protein levels of USP10 were determined by western blot. Data are shown as the mean \pm SD.