

Supplementary Material

to

Comparing phospholipid profiles of mitochondrial and whole cell: higher PUFA content in mitochondria is driven by increased phosphatidylcholine unsaturation.

Fig. S1. Representative MS spectra of PS, PI, and PG in whole brain tissue (left panels) and brain mitochondria (right panels).

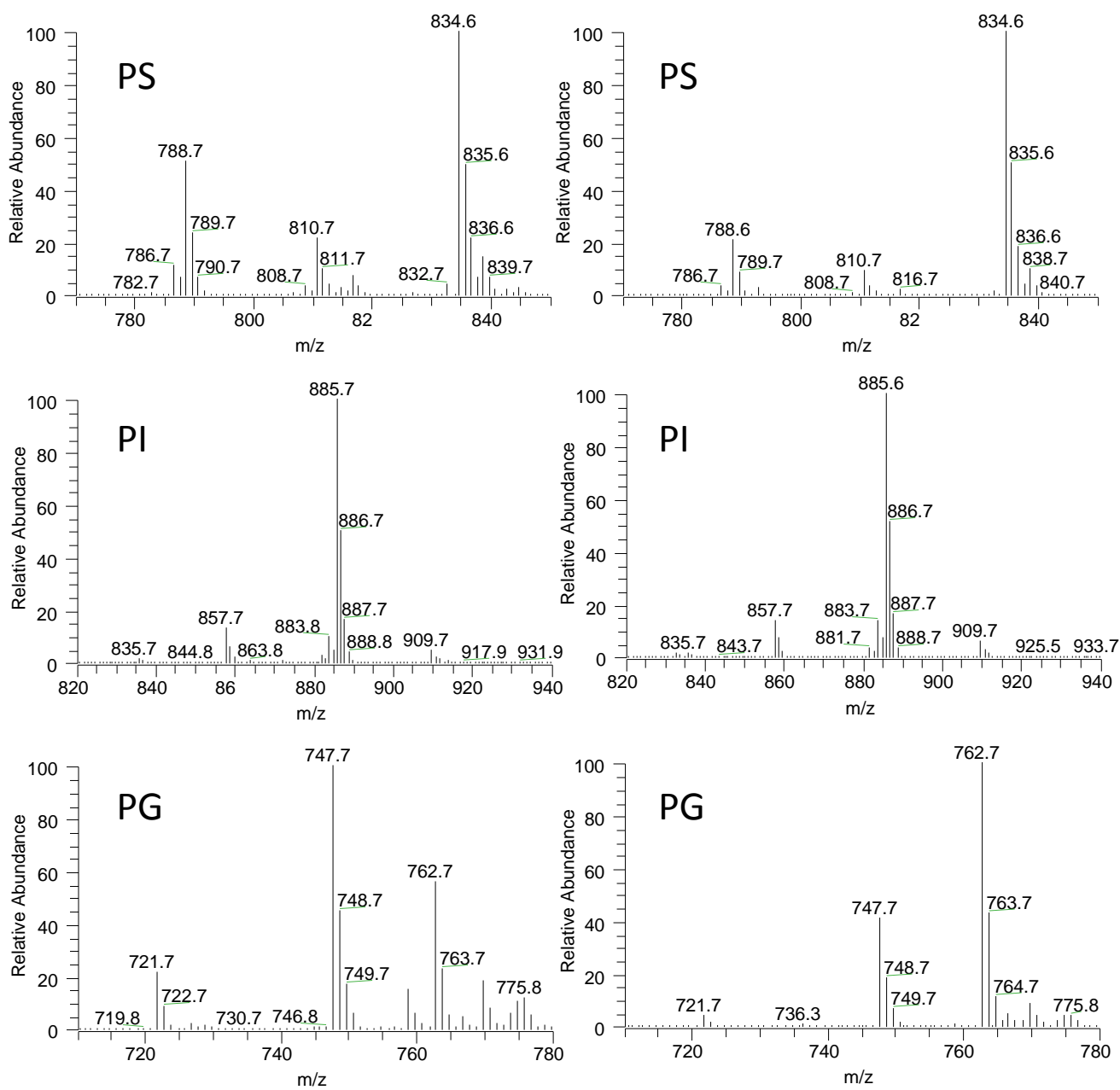


Fig. S2. Representative MS spectra of PS, PI, and PG in whole heart tissue (left panels) and heart mitochondria (right panels).

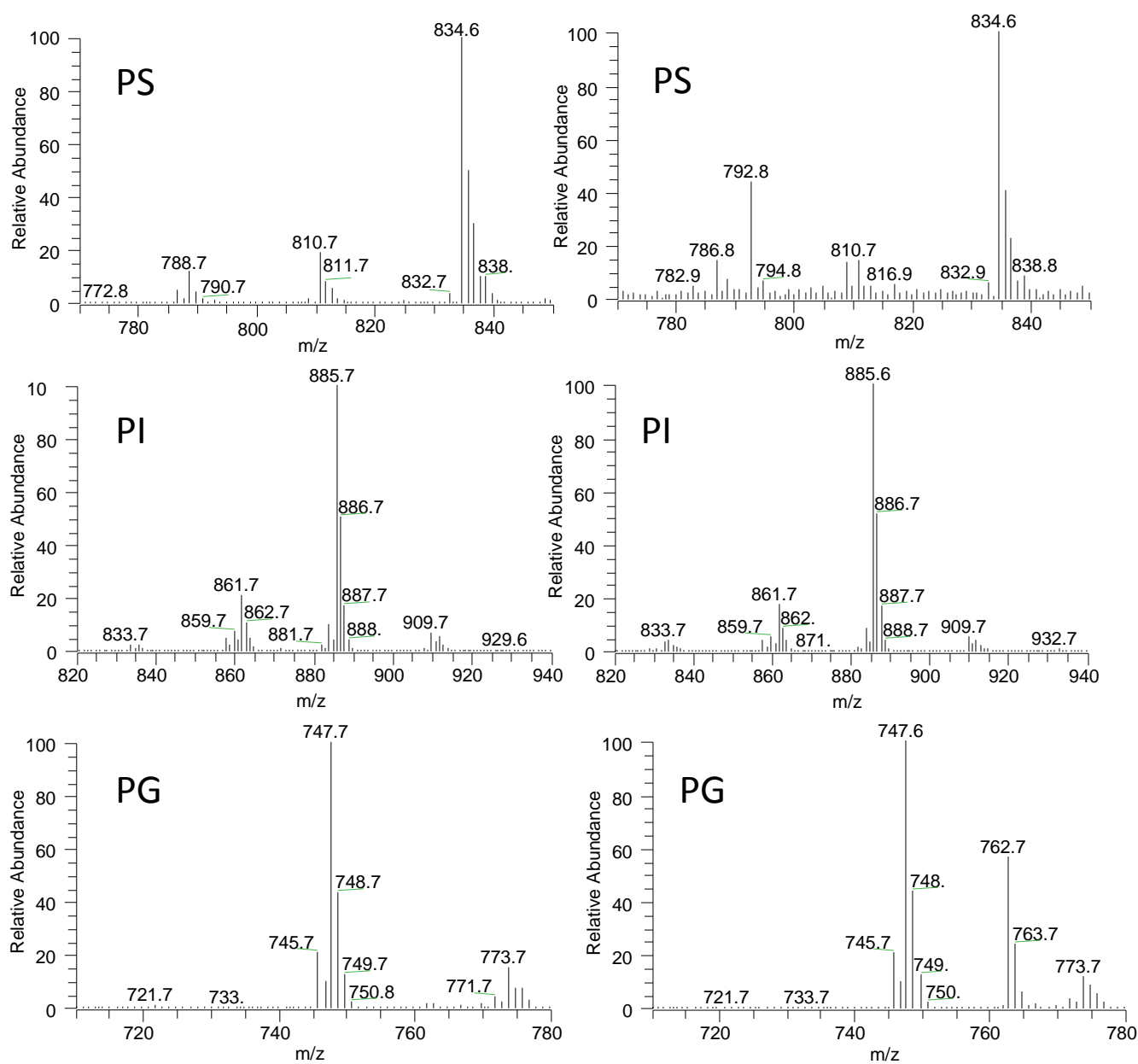


Fig. S3. Representative MS spectra of PE, PC, PS, PI, and PG in whole kidney tissue (left panels) and kidney mitochondria (right panels).

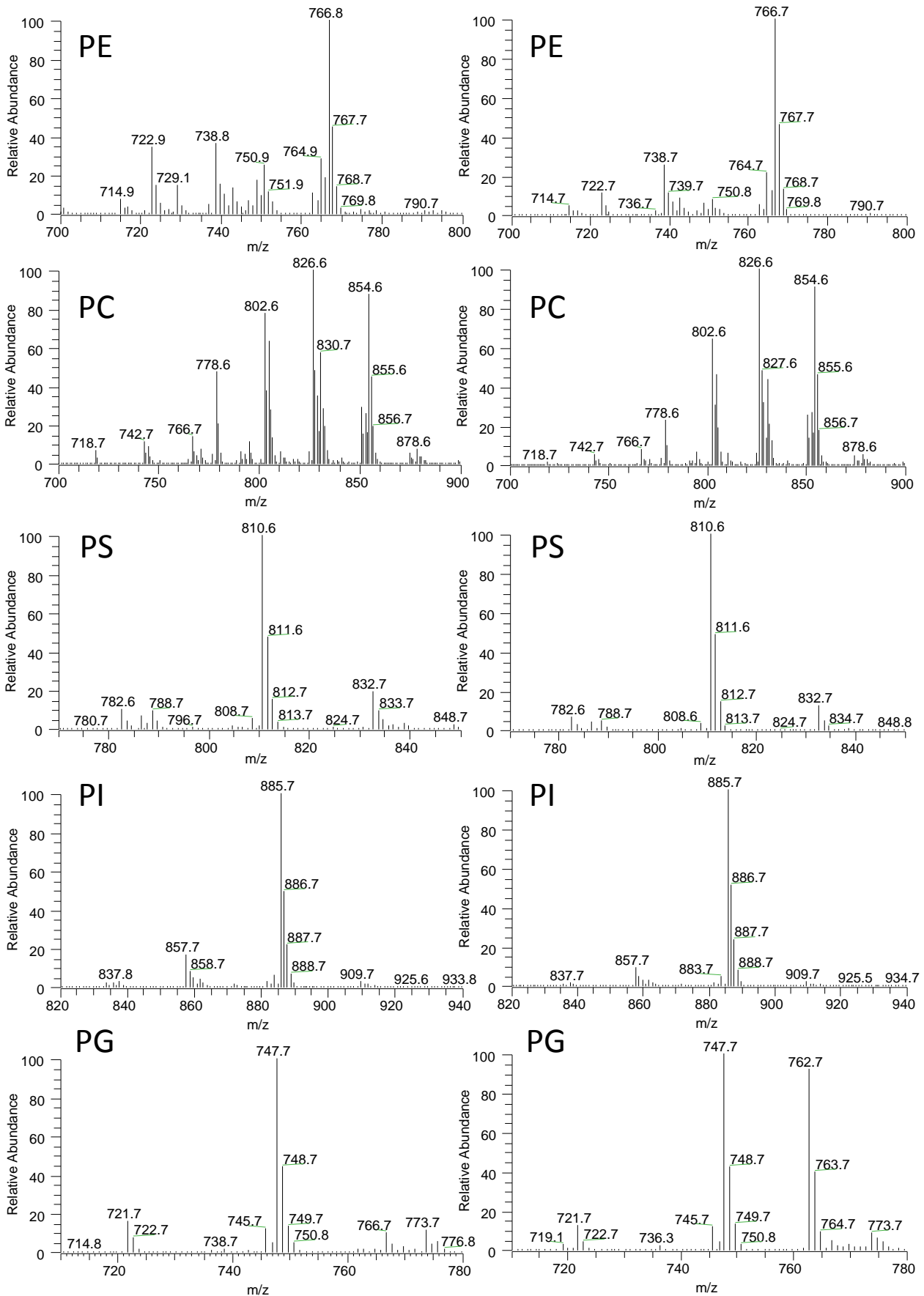


Fig. S4. Representative MS spectra of PE, PC, PS, PI, and PG in whole liver tissue (left panels) and liver mitochondria (right panels).

