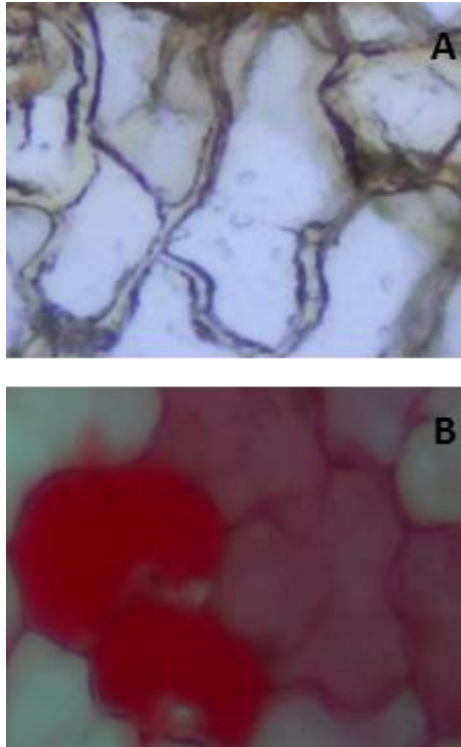
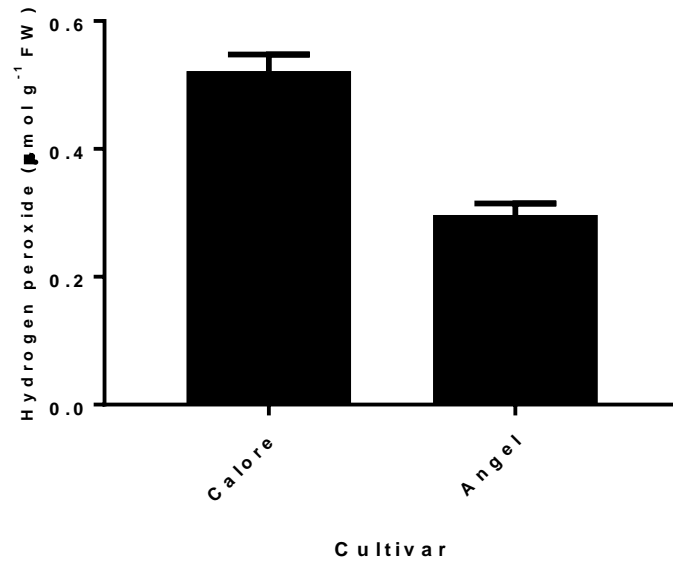


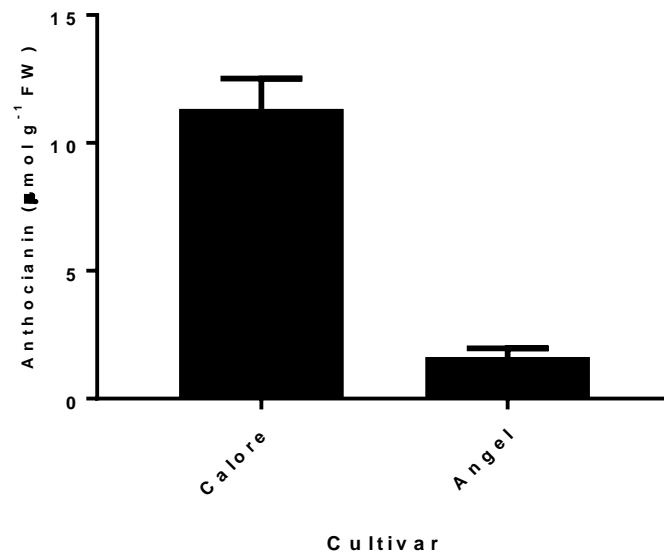
## Supplemental Figures



Supplemental Figure 1. Lack of pigmentation in Angel cultivar (A) and accumulation of anthocyanin in Calore cultivar (B) in *Anthurium* spathe



Supplemental Figure 2. Hydrogen peroxide content in the spathes of two cultivars of Anthurium cut flowers ('Calore' and 'Angel'). Values are the means of fifteen biological replicates and columns indicate means  $\pm$  SEM.



Supplemental Figure 3. Anthocyanin content in the spathes of two cultivars of Anthurium cut flowers ('Calore' and 'Angel'). Values are the means of fifteen biological replicates and columns indicate means  $\pm$  SEM.