

## **Role of Sheet-Edge Interactions in $\beta$ -sheet Self-Assembling Peptide Hydrogels – Supporting Information**

*Jacek K. Wychowaniec*<sup>1,2,†</sup>, *Andrew M. Smith*<sup>1,2</sup>, *Cosimo Ligorio*<sup>1,2</sup>, *Oleksandr O. Mykhaylyk*<sup>3</sup>, *Aline F. Miller*<sup>2,4,\*</sup>, *Alberto Saiani*<sup>1,2\*</sup>

<sup>1</sup> School of Materials, The University of Manchester, Oxford Road, M13 9PL, Manchester, UK

<sup>2</sup> Manchester Institute of Biotechnology, The University of Manchester, Oxford Road, M13 9PL, Manchester, UK

<sup>3</sup> Soft Matter Analytical Laboratory, Dainton Building, Department of Chemistry, The University of Sheffield, Sheffield, S3 7HF, UK

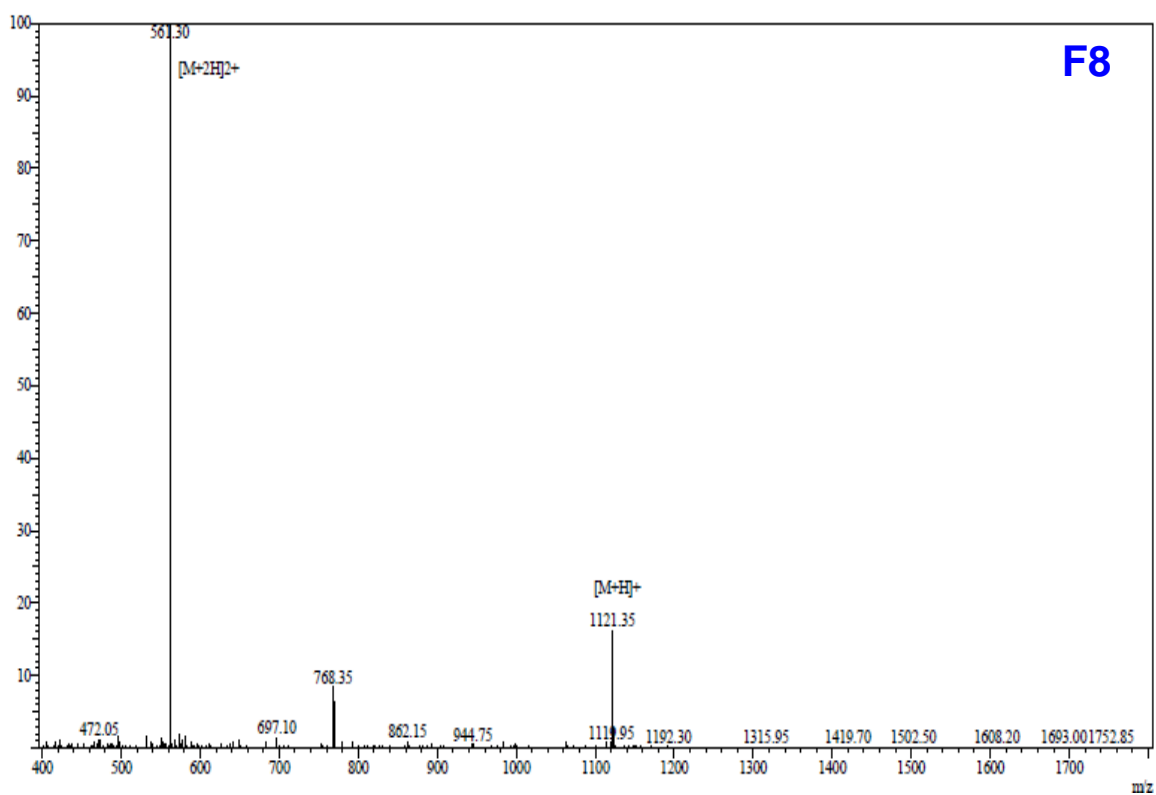
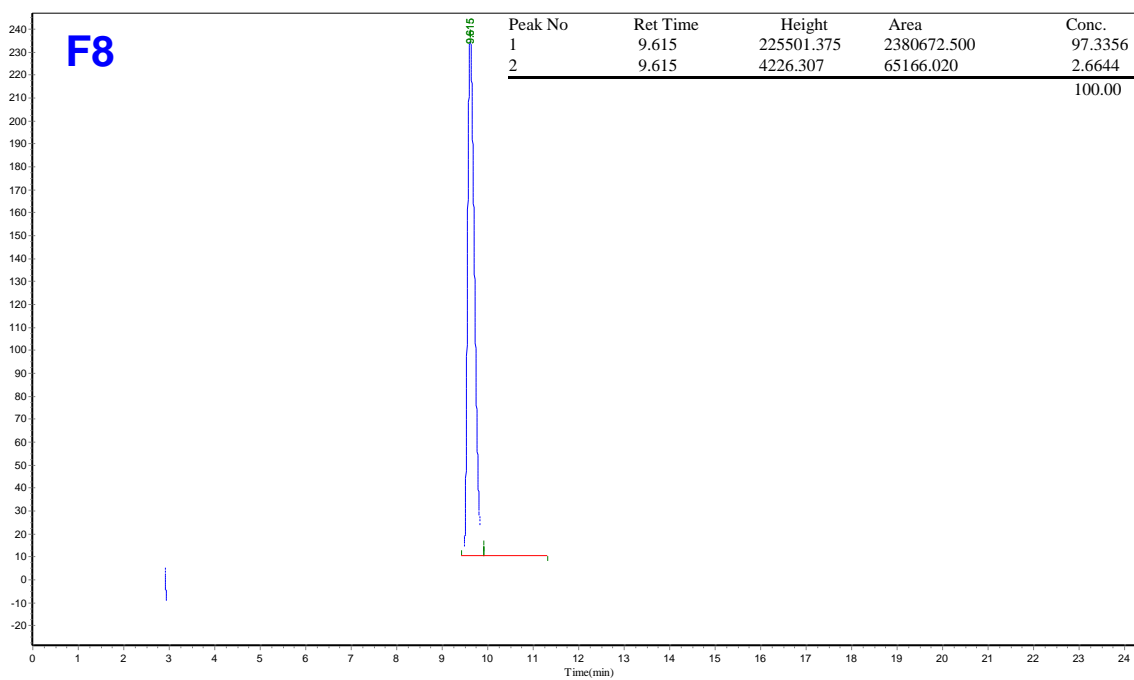
<sup>4</sup> School of Chemical Engineering and Analytical Science, The University of Manchester, Oxford Road, M13 9PL, Manchester, UK

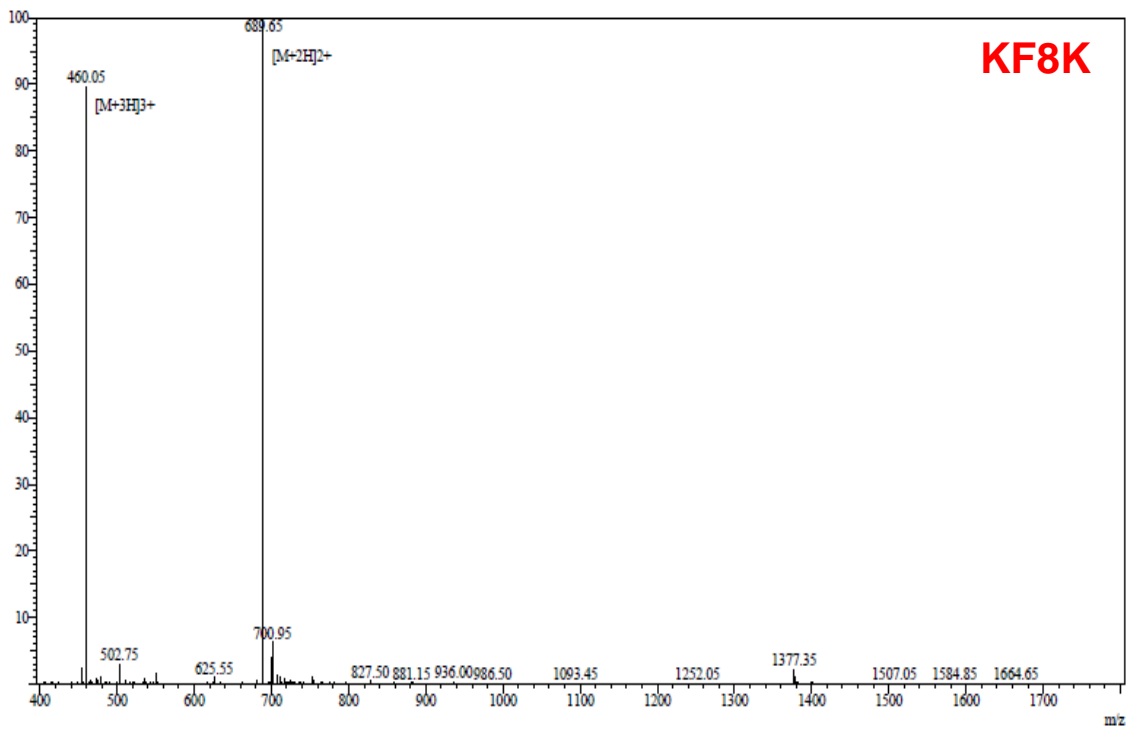
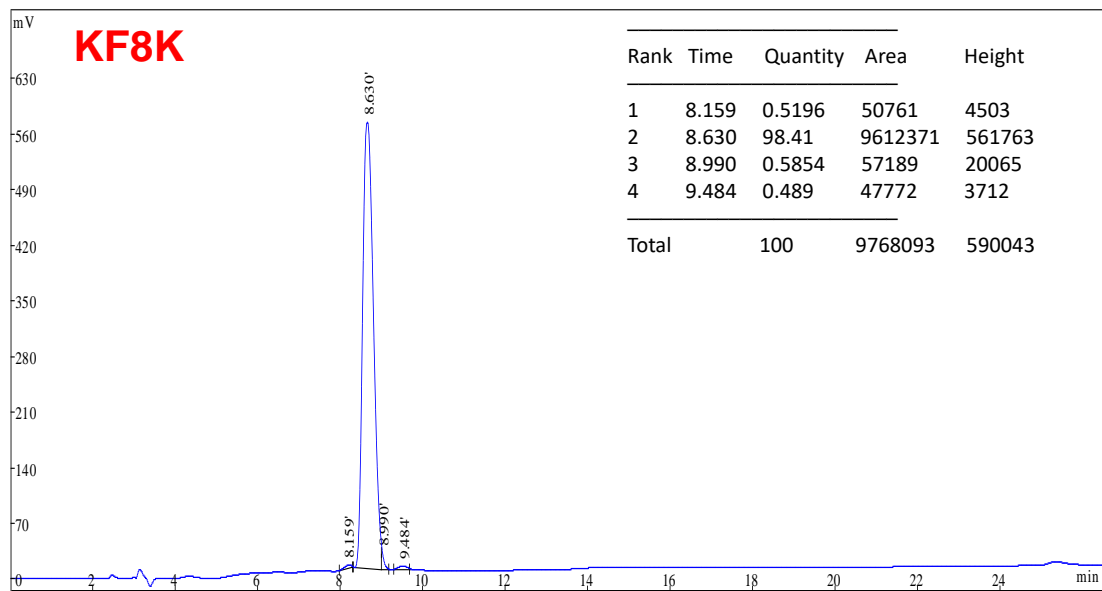
### **Current addresses**

<sup>†</sup> School of Chemistry, University College Dublin, Belfield, Dublin 4, Ireland

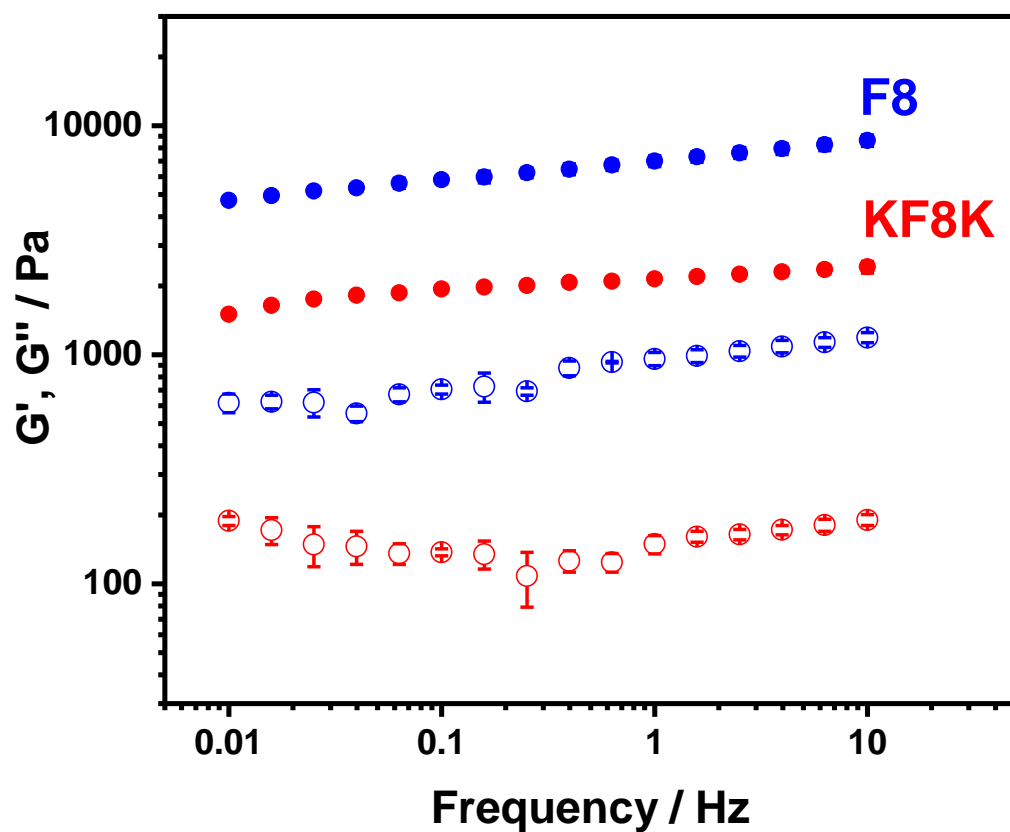
<sup>\*</sup> Manchester BIOGEL, 19F4 Mereside, Alderley Park, Alderley Edge, Cheshire SK10 4TG, UK,

\* Corresponding author: Phone: +44 161 306 5981; Fax: +44 161 306 3586; e-mail: a.saiani@manchester.ac.uk;





*Figure S1: HPLC and MS reports provided by supplier for F8 and KF8K peptides used in this study.*



*Figure S2: Storage ( $G'$  - closed symbols) and loss ( $G''$  - open symbols) shear moduli vs frequency curves obtained at 0.2 % strain for F8 and KF8K hydrogels prepared at 26.8 mM concentration.*

*Video ESI 1: SIPLI movie of F8 8.9 mM sample;*

*Video ESI 2: SIPLI movie of F8 17.6 mM sample;*

*Video ESI 3: SIPLI movie of F8 26.8 mM sample;*

*Video ESI 4: SIPLI movie of KF8K samples.*



The Polymers & Peptides Research Group logo embedded in all supporting videos is the property of its creator Prof. Alberto Saiani.