

Supplementary Material

Generation of Transgenic Cynomolgus Monkeys Overexpressing the Gene for Amyloid- β Protein Precursor

Supplementary Table 1. Primary antibodies used in the experiments

Antibody	Resource	Dilution
Immunocytochemistry		
mouse anti-CDX2	MU392A-UC; BioGenex, Fremont, CA	1:500
rabbit anti-GFP (Alexa488 conjugated)	A-21311; Thermo Fisher Scientific, Waltham, MA	1:200
mouse anti-FLAG	M2; Sigma-Aldrich, St. Louis, MO	1:10,000
Immunohistochemistry		
rat anti-GFP	GF090R; Nacalai Tesque, Kyoto, Japan	1:500
rabbit anti-GFP	#598; MBL, Nagoya, Japan	1:500
mouse anti-NeN	A60; Merk Millipore, Burlington, MA	1:1,000
mouse A β	4G8; Biolegend. San Diego, CA	1:1,000
mouse phosphorylated Tau	AT8; Thermo Fisher Scientific	1:1,000
Western blotting		
rabbit anti-GFP	A-21311; Thermo Fisher Scientific	1:4,000
rabbit anti-APP C-terminal	A8714; Sigma-Aldrich	1:1,000
mouse anti-APP N-terminal	MAB348; Merk Millipore	1:1,000
mouse anti-APP N-terminal	1D10; IBL, Gumma, Japan	1:10,000
mouse anti-FLAG	M2; Sigma -Aldrich	1:5,000
rabbit anti-FLAG	D6W5B; CST, Danvers, MA	1:5,000
mouse anti- β -actin	C4; Santacruz Biotechnology, Dallas, TX	1:1,000
rabbit anti- β -actin (HRP-conjugated)	PM053-7; MBL	1:4,000
mouse P2A	3H4; Merk Millipore	1:5,000
FACS		
mouse anti-human CD20 (Alexa Fluo647 conjugated)	302318; BioLegend	1:10
mouse anti-human CD3 (phycoerythrin-conjugated)	552127; BD Biosciences, Franklin Lakes, NJ	1:10
mouse anti-CD11b (allophycocyanin-conjugated)	101212; BioLegend	1:100

Supplementary Figure 1. Raw data for western blot analysis in Figures 1E and 5C.
Uncropped western blot images shown in Figures 1E and 5C are presented.

Fig.1E

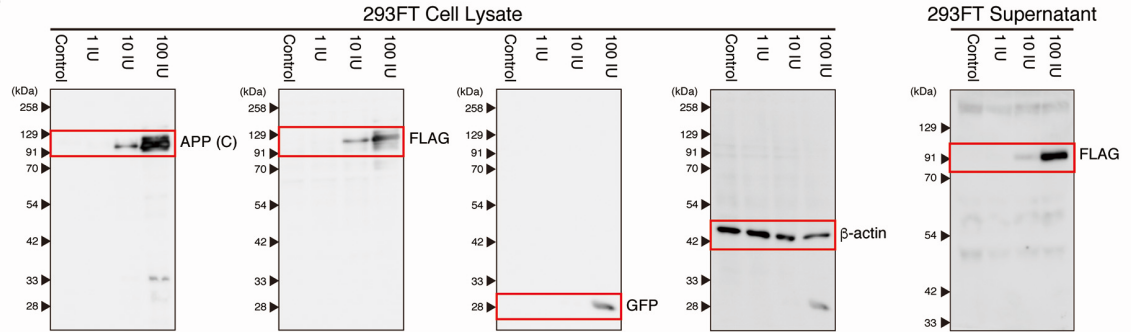
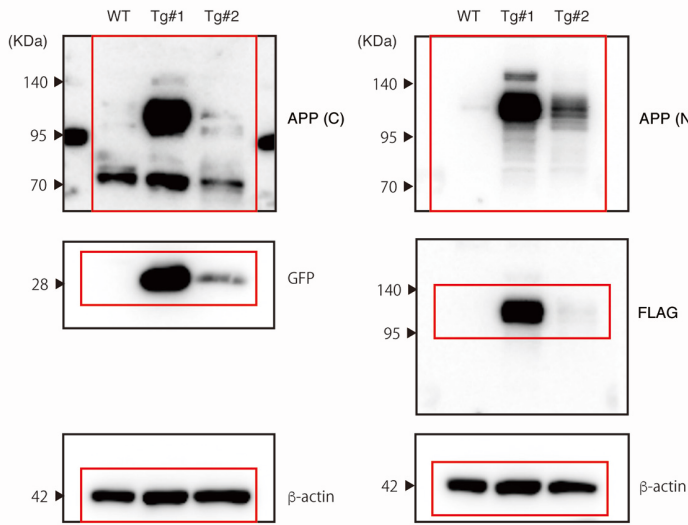


Fig.4C



Supplementary Figure 2. Immunohistochemistry of the skin (upper) and skeletal muscle (lower). The sections were stained with an anti-GFP antibody with DAPI for nuclear staining, and observed using a confocal microscope (SP-8, Leica). Scale bar = 75 μ m.

