

Figure S1. Representative immunohistochemical staining images of lung cancer and match adjacent para-cancerous tissues. Representative images of TLR4 staining in (A) para-cancerous tissue and lung SCC tissues, (B) para-cancerous tissue and lung ADC tissues. Representative images of PD-L1 staining in (C) para-cancerous tissue and lung SCC tissues, (D) para-cancerous tissue and lung ADC tissues. ADC, adenocarcinoma; SCC, squamous cell carcinoma; TLR4, toll-like receptor; PD-L1, programmed-death ligand 1.

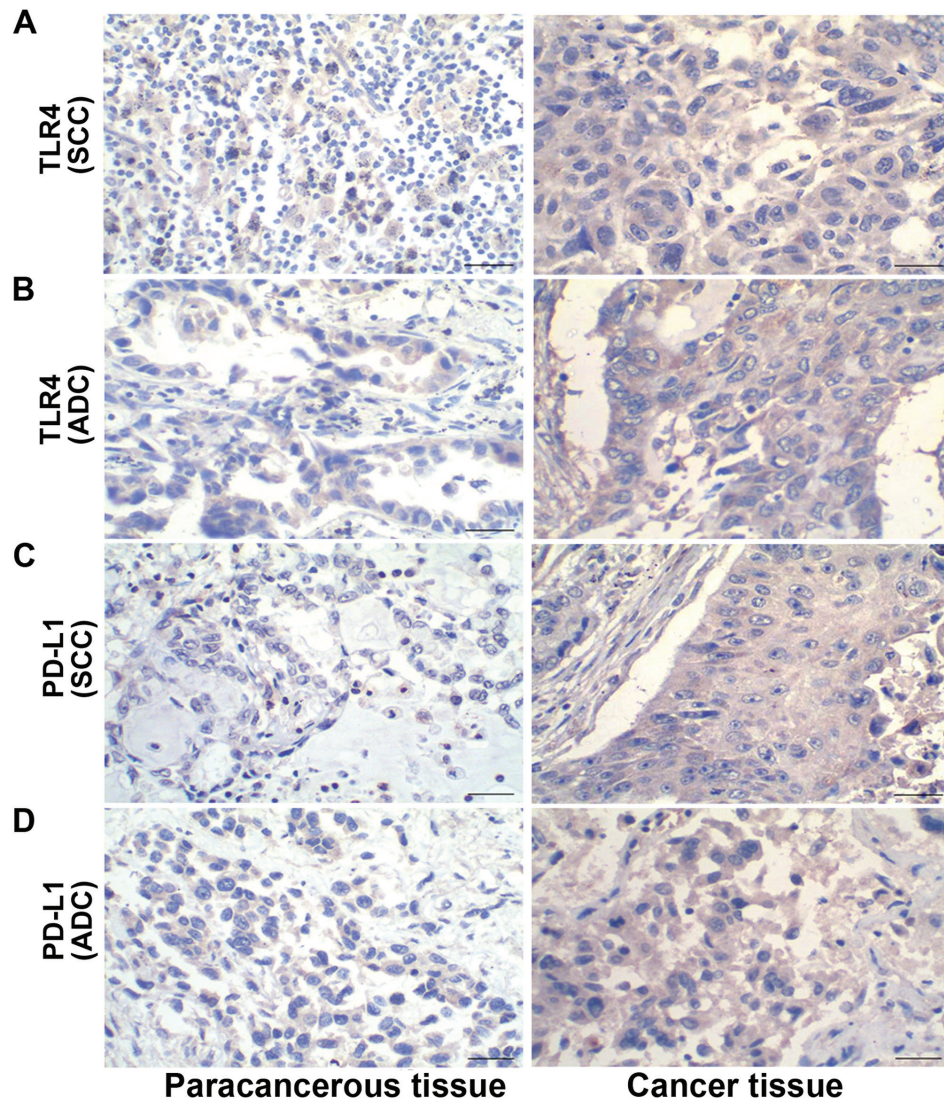


Table SI. The rates of TLR4 and PD-L1 expression in NSCLC tissues and para-cancerous tissues.

Parameters	Cases	TLR4		Positive rate	P-value <sup>a</sup>	PD-L1		Positive rate	P-value <sup>b</sup>
		+	-			+	-		
NSCLC tissues	60	31	29	51.70%	0.0001	37	23	61.7	<0.0001
Para-cancerous tissues	20	1	19	5%		2	18	3.3	

<sup>a</sup>% TLR4+ in NSCLC tissues vs. % TLR4+ in para-cancerous tissues; <sup>b</sup>% PD-L1+ in NSCLC tissues vs. % TLR4+ in para-cancerous tissues; Pearson's  $\chi^2$ -test was used. PD-L1, programmed cell death ligand 1; TLR4, toll-like receptor 4.

Table SII. Incidences of TLR4 and PD-L1 co-expression in NSCLC tissues.

PD-L1	TLR4		Total
	+	-	
+	24	13	37
-	7	16	23
Total	31	29	60

PD-L1, programmed cell death ligand 1; TLR4, toll-like receptor 4.