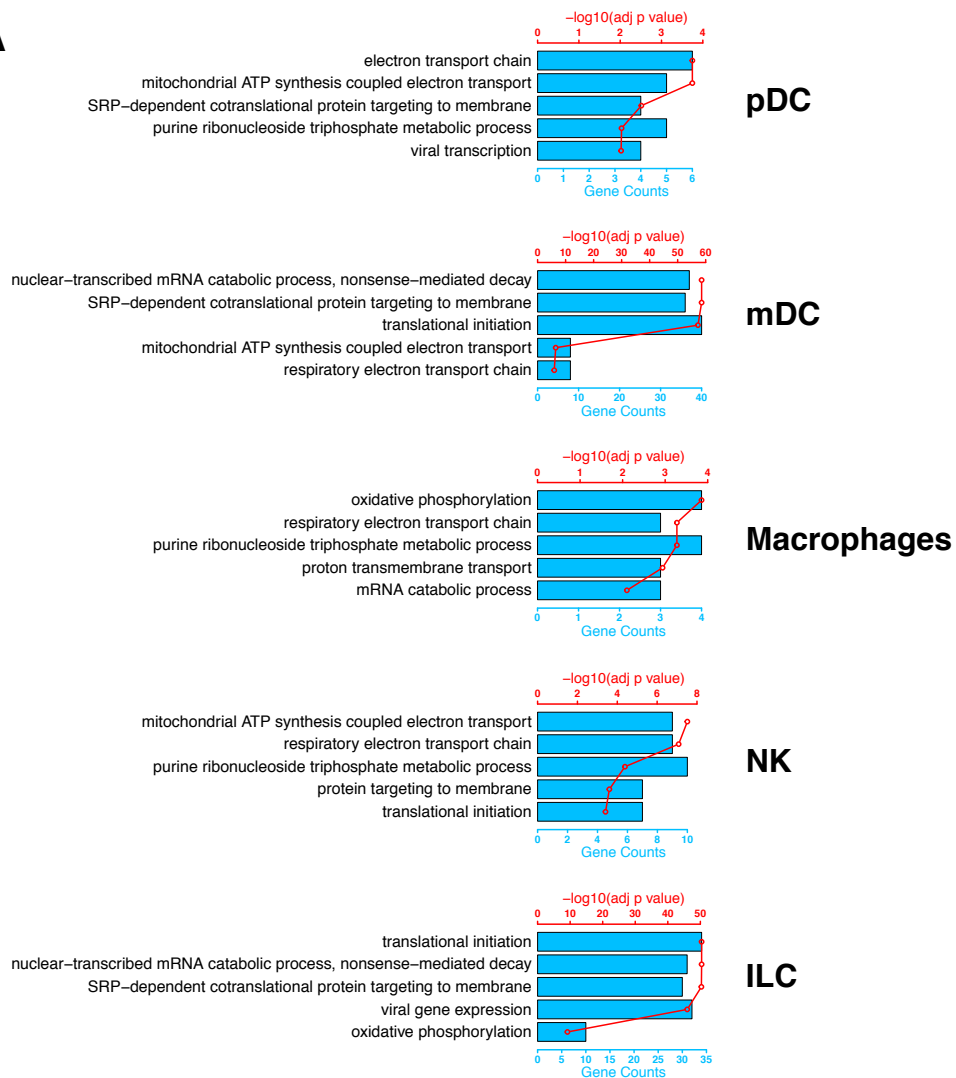


A



B

downregulated genes

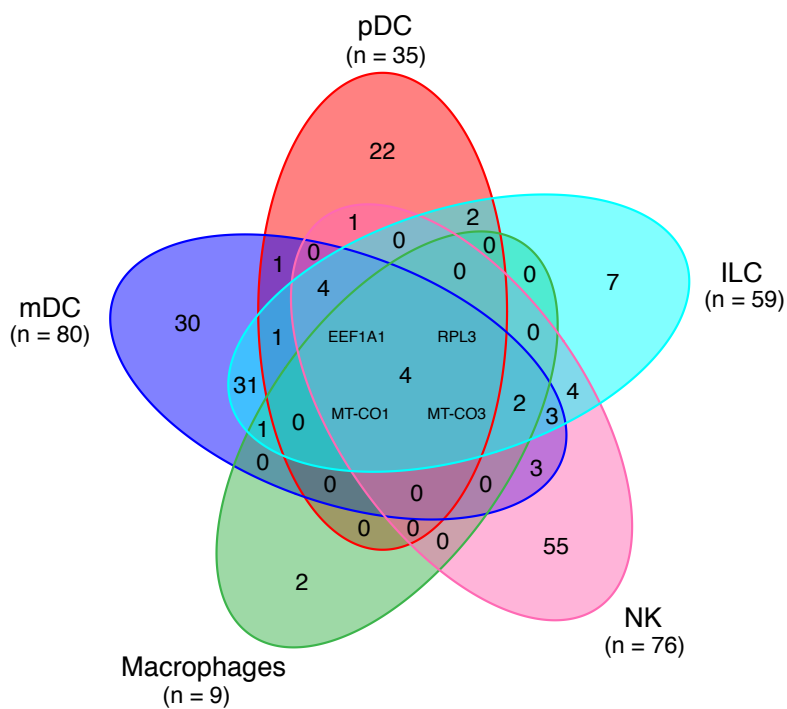


Figure S1. Venn diagram showing overlap of genes differentially modulated by HIV-1 for each innate immune subset. Experiments were performed as in Figure 2. **(A)** GO term analysis of down-regulated pathways by HIV-1 in pDC, mDC, macrophage, NK and ILC. The red points connected by a red line indicate the $-\log_{10}$ Benjamini-Hochberg adjusted p values for enrichment of the down-regulated genes for the specified biological process with the scale on the top axis. The blue bars indicate the number of down-regulated genes found in the specified biological process with the scale on the bottom axis. **(B)** Venn diagram showing overlap of genes downregulated by HIV-1 for each of the 5 innate immune subsets. The differentially modulated genes common to all 5 innate immune subsets were listed in the center region of each Venn diagram.

Figure S2

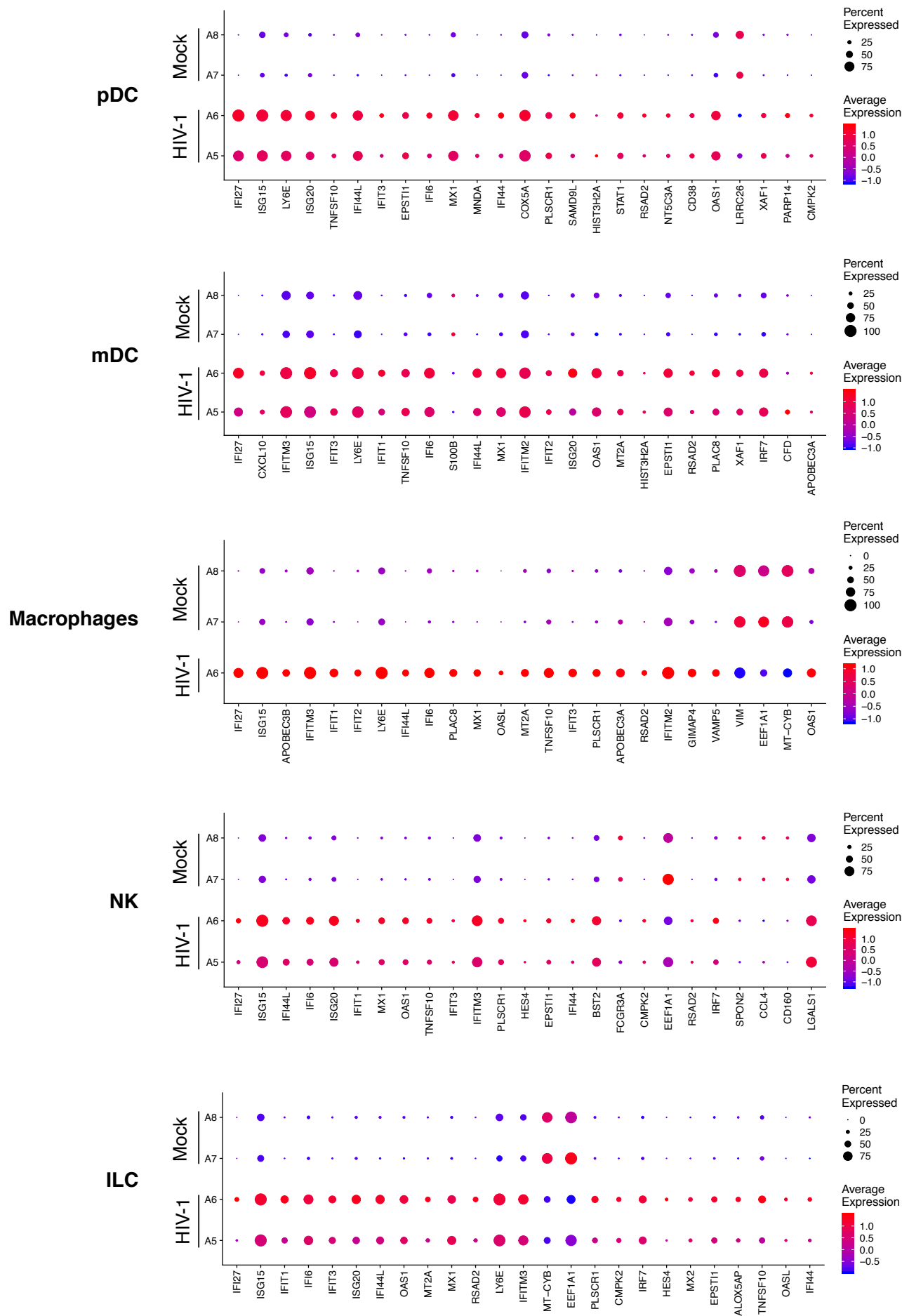


Figure S2. Top 25 differential expressed genes in each innate immune subset. Experiments were performed as in Figure 2. Dot plot of top 25 differentially expressed genes in each of the pDC, mDC, macrophages, NK and ILC populations between mock and HIV-1 infected NRG-hu HSC mice were shown.

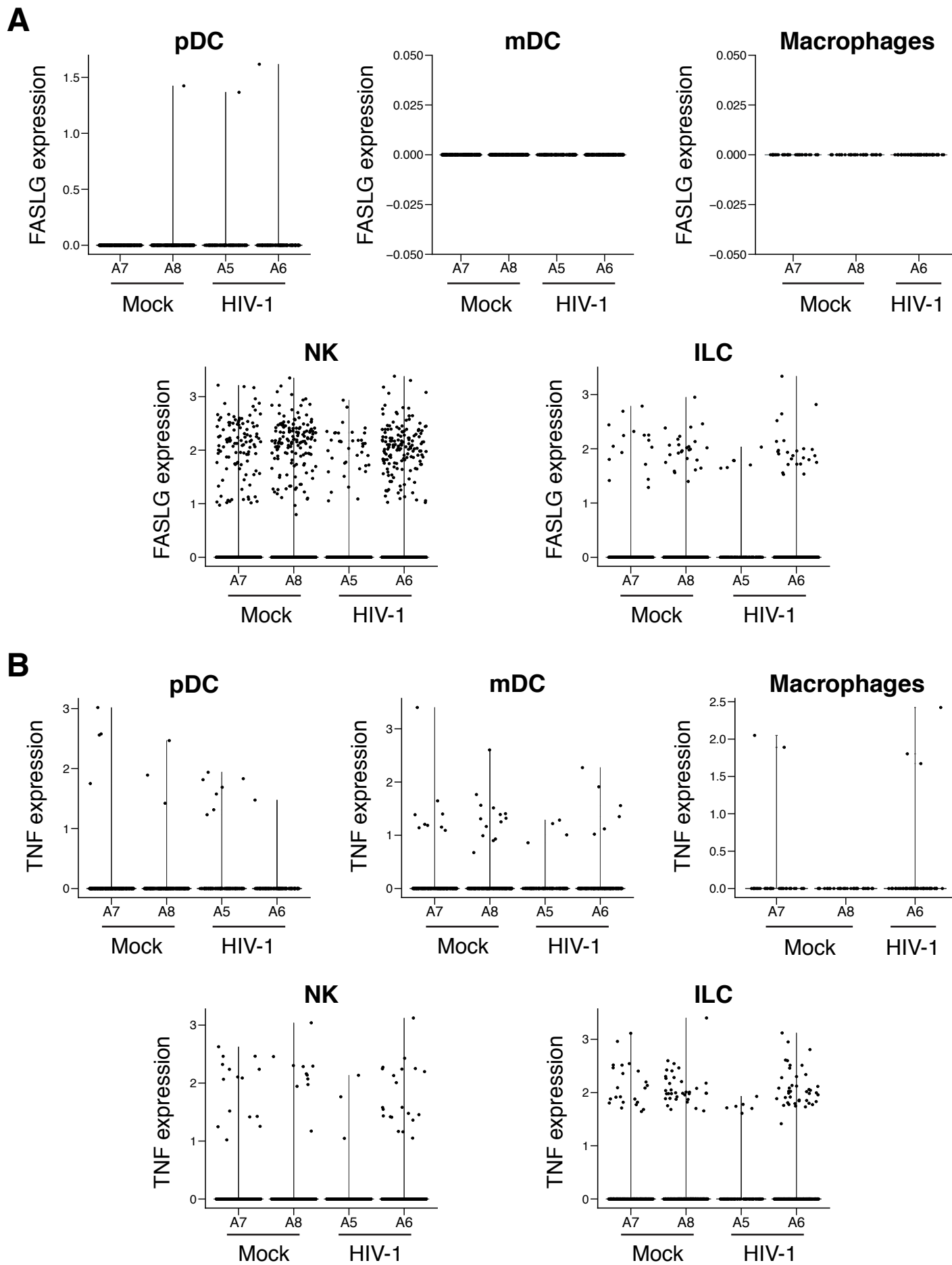


Figure S3. Expression of Fas ligand and TNF- α genes in different innate immune cells from mock or HIV-1 infected mice. Experiments were performed as in Figure 2. Violin plot of normalized unique molecular identifier (UMI) showing distribution of Fas ligand (FASLG) and TNF- α (TNF) gene expression in different innate immune cells from mock or HIV-1 infected mice. A5, A6, A7 and A8 are the mouse identification number.

Figure S4

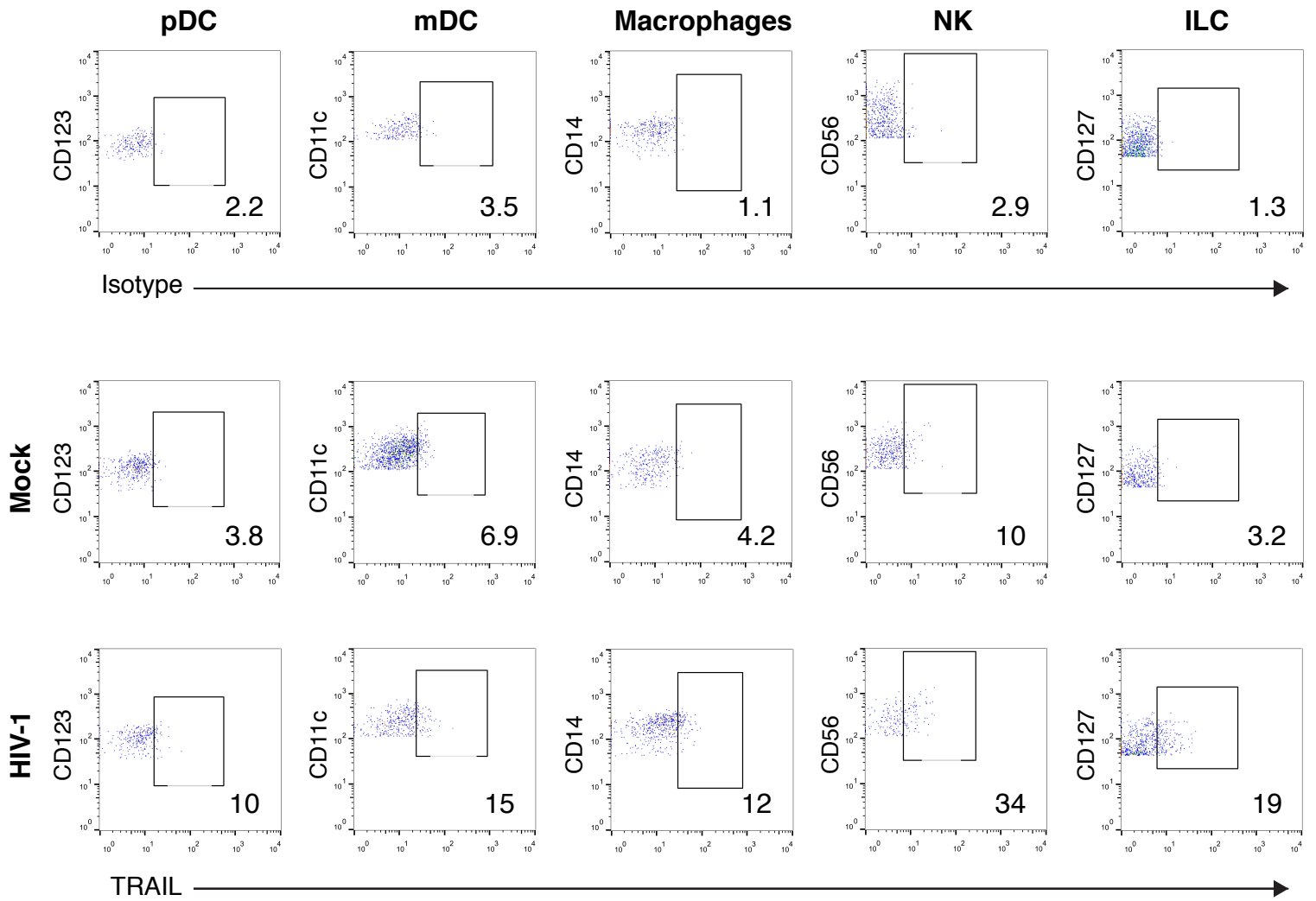


Figure S4. FACS plots for TRAIL protein expression. FACS plots show TRAIL protein expression on human pDC (hCD45⁺CD3⁻CD19⁻CD4⁺CD123⁺), mDC (hCD45⁺CD3⁻CD19⁻CD56⁻CD11c⁺CD14⁻), macrophage/monocyte (hCD45⁺CD3⁻CD19⁻CD56⁻CD14⁺), NK (hCD45⁺CD3⁻CD19⁻CD56⁺) and ILC (hCD45⁺CD3⁻CD11c⁻CD14⁻CD16⁻CD19⁻CD20⁻CD56⁻CD123⁻CD127⁺) from mock and HIV-1 infected mice.

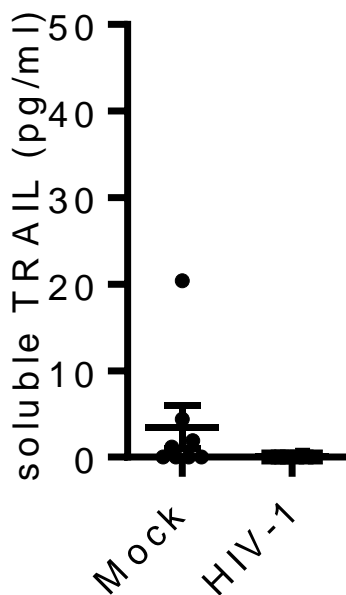


Figure S5. Detection of soluble TRAIL in serum of HIV-1 infected NRG-hu HSC mice. Summarized data of soluble TRAIL levels in the plasma of mock and HIV-1 infected mice 3-5 weeks post infection. Mock, n=8; HIV-1, n=8. Combined data from 2 independent experiments.

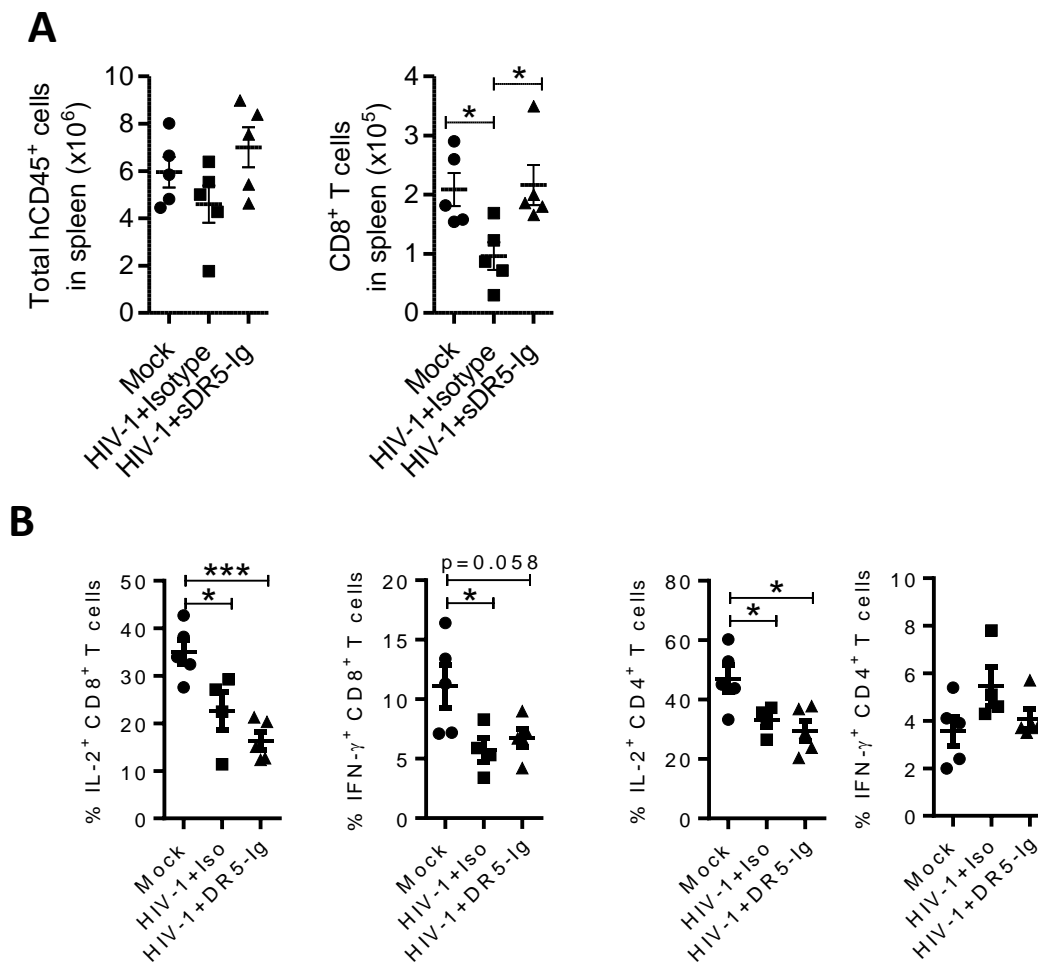


Figure S6. Analysis of human T cell number and function in HIV-1 infected mice with sDR5-Ig or control Ig treatment. NRG-hu HSC mice were treated as in figure 4 B-E. **(A)** Numbers of total human leukocytes (CD45⁺) and human CD8⁺ T cells (CD3⁺CD8⁺) in spleens at termination (day 35) are summarized. **(B)** At termination, splenocytes were stimulated ex vivo with PMA/ionomycin for 4 hours followed by intracellular cytokine staining. Summarized data show percentages of IFN-γ and IL-2 producing CD8⁺ and CD4⁺ T cells.