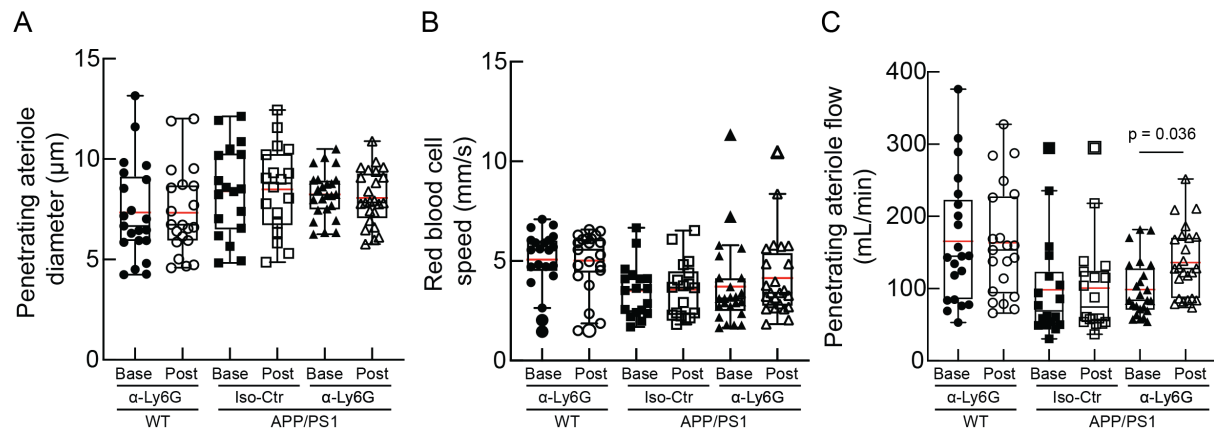


Supplementary Figure for “Increasing cerebral blood flow improves cognition into late stages in Alzheimer’s disease mice”

Oliver Bracko, Brendah N. Njiru, Madisen Swallow, Muhammad Ali, Mohammad Haft-Javaherian, and Chris B. Schaffer



Supplementary Figure 1: Measurements of (A) vessel diameter, (B) RBC flow speed, and (C) penetrating arteriole blood flow in 21-22 months old APP/PS1 mice and WT mice before and after treatment with α -Ly6G or isotype control antibodies (APP/PS1 α -Ly6G: 34 arterioles across 4 mice; APP/PS1 Iso-Ctr: 21 arterioles across 3 mice; WT α -Ly6G: 28 arterioles across 4 mice). Significance determined by one-way ANOVA and Holms-Sidak’s multiple comparisons test.