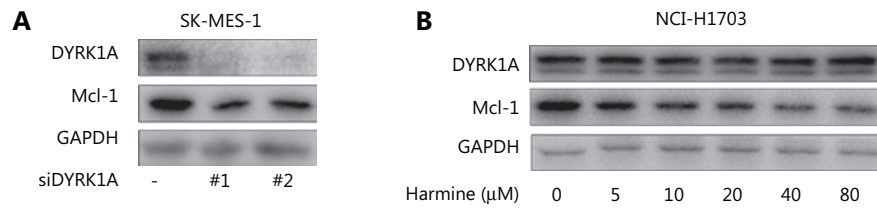


## Supplementary material



**Figure S1** DYRK1A regulates the expression of Mcl-1 in squamous cell carcinoma cells. (A) SK-MES-1 cells were transfected with control siRNA and DYRK1A siRNA for 48 h, and the expression of DYRK1A and Mcl-1 were detected by Western blot. (B) NCI-H1703 cells were treated with harmine at the indicated concentrations for 24 h, and the expression of the indicated proteins was detected by Western blot.