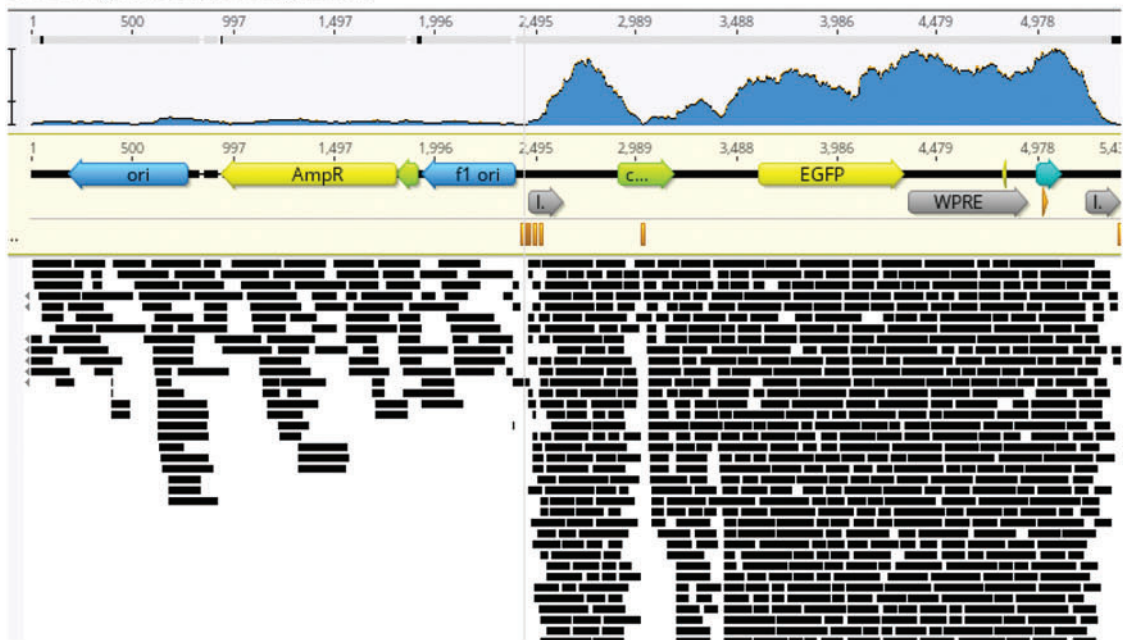
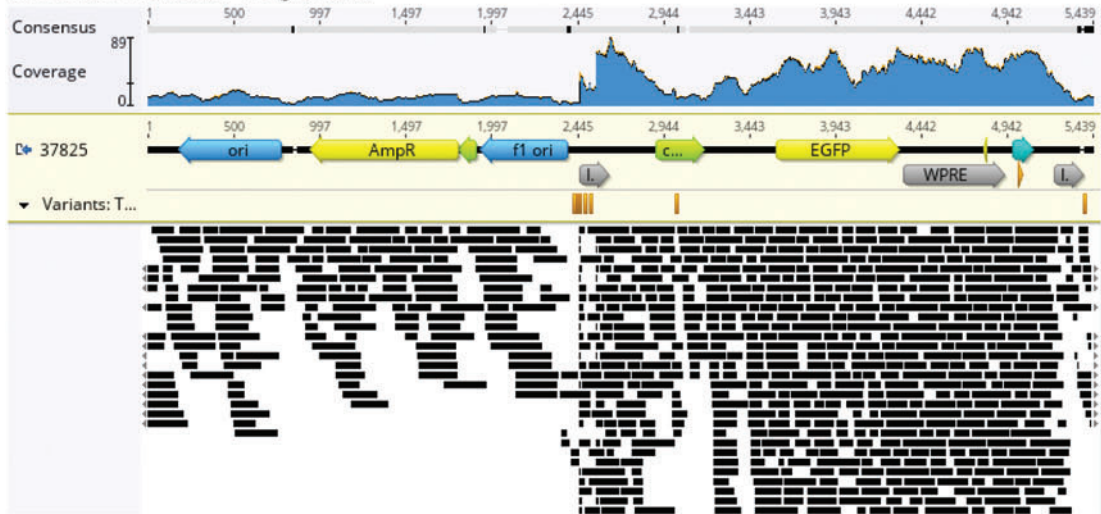


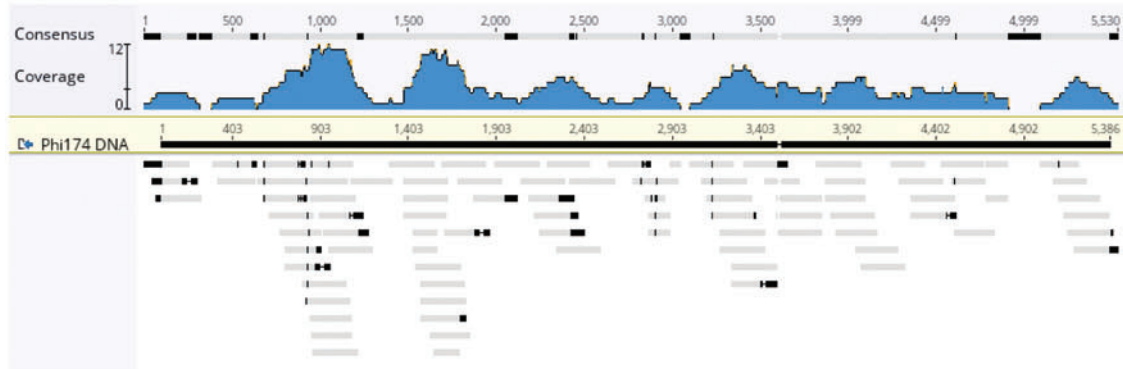
### 37825 High Molecular Weight Band



### 37825 Low Molecular Weight Band



### ΦX174 DNA



**Supplementary Figure S1.** Analysis of VGS data from agarose gel extracted DNA. (Top and middle panels) High- and low-molecular-weight bands were extracted and submitted for VGS. Reads were aligned to the reference *cis* plasmid. (Bottom panel) ΦX174 DNA was submitted for VGS, and reads were aligned to the reference sequence. VGS, viral genome sequencing.