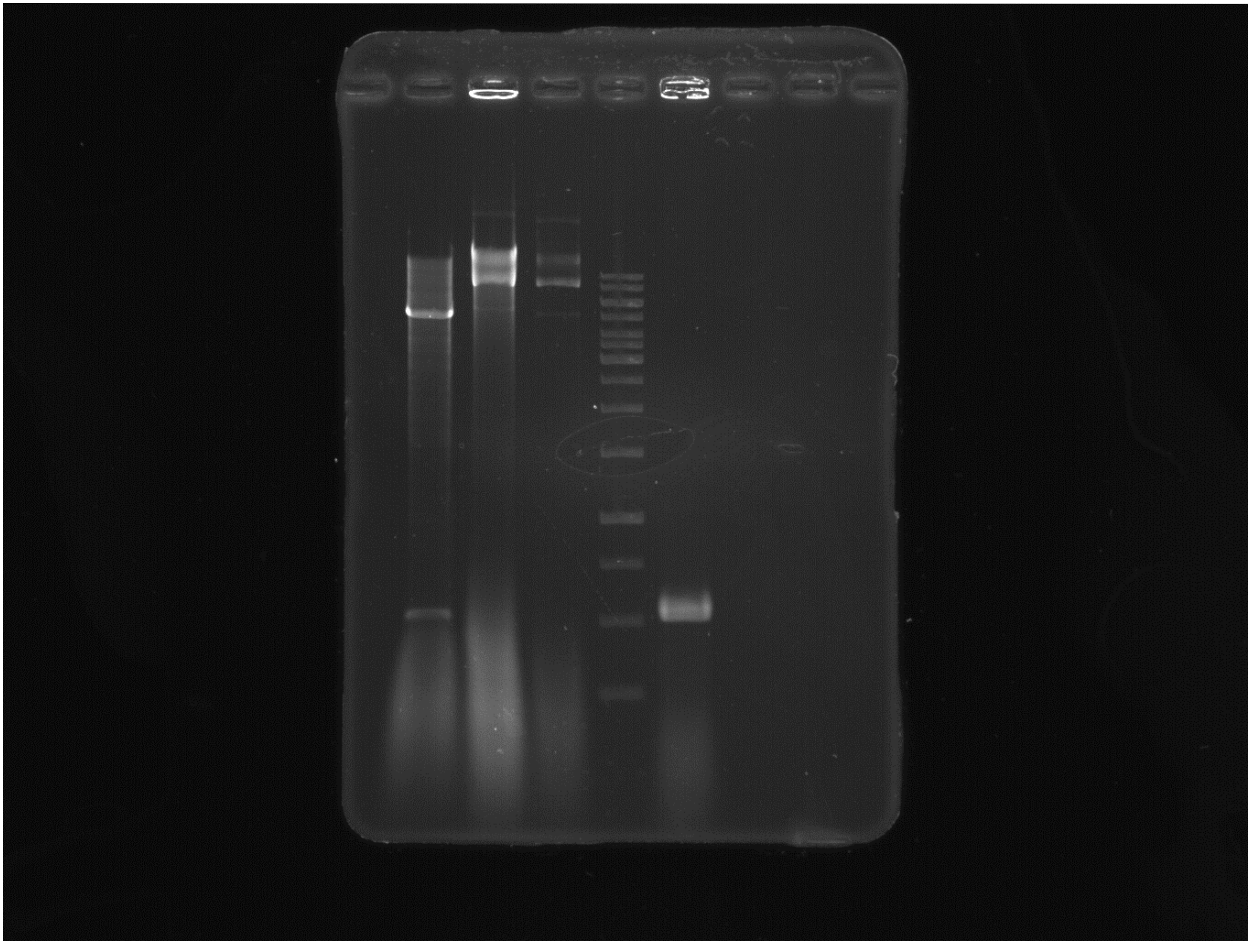
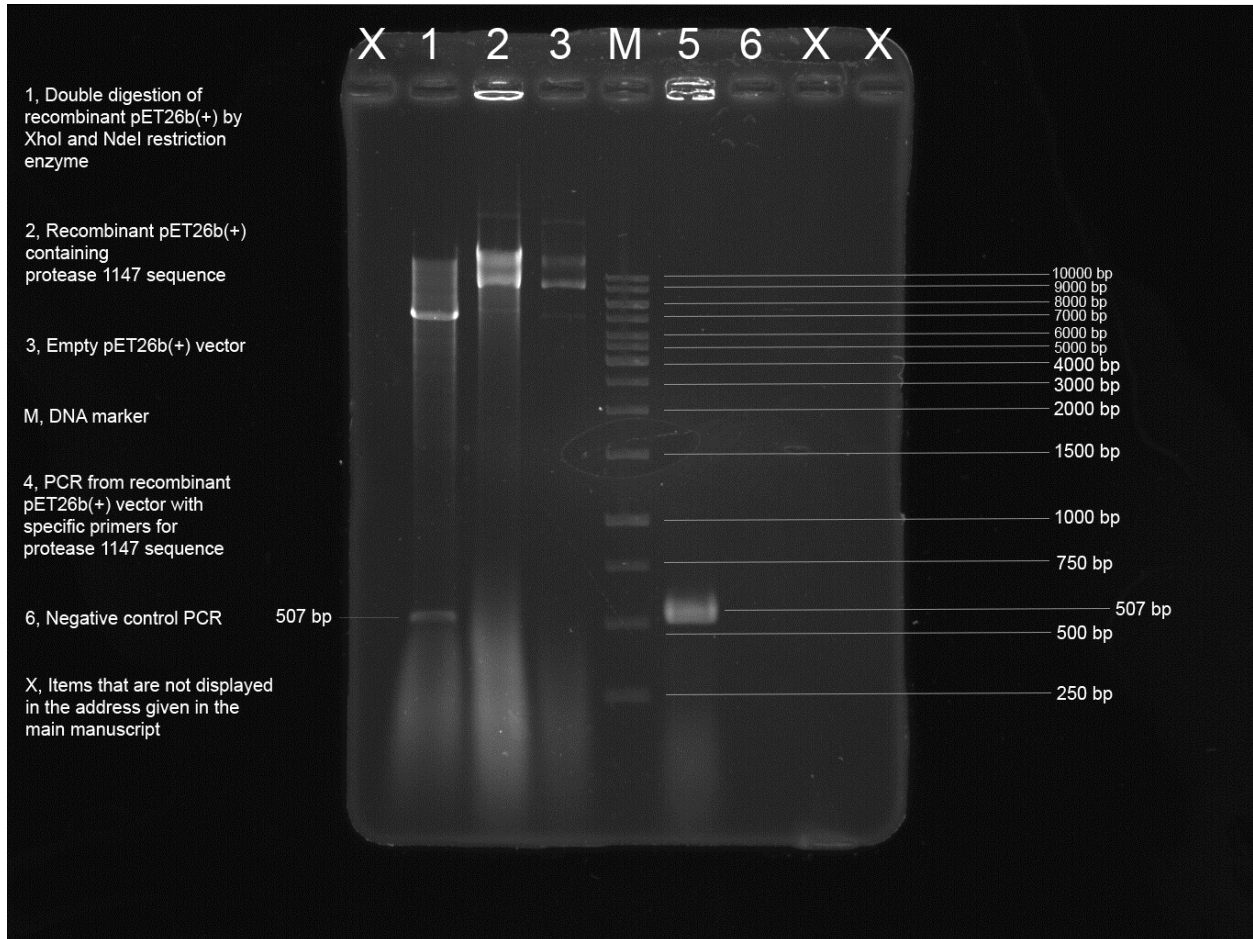


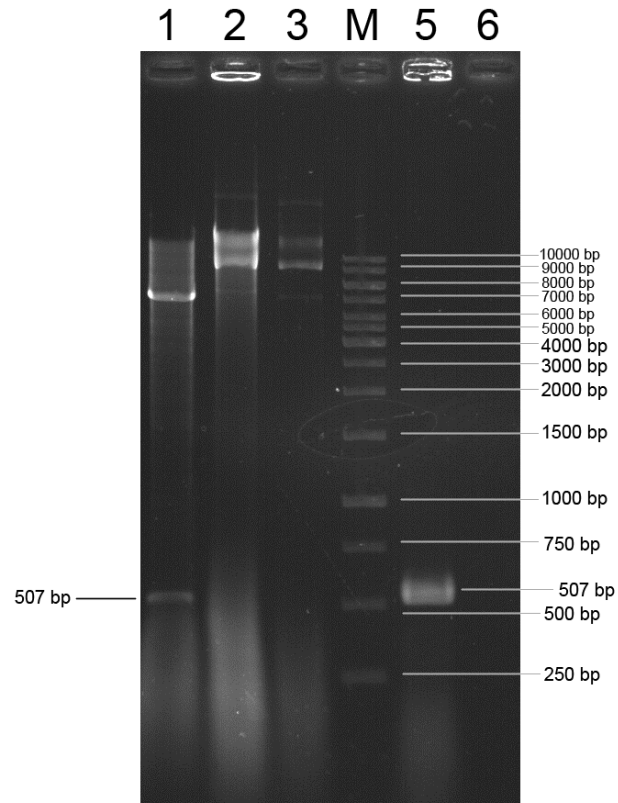
Raw-cloning analyses



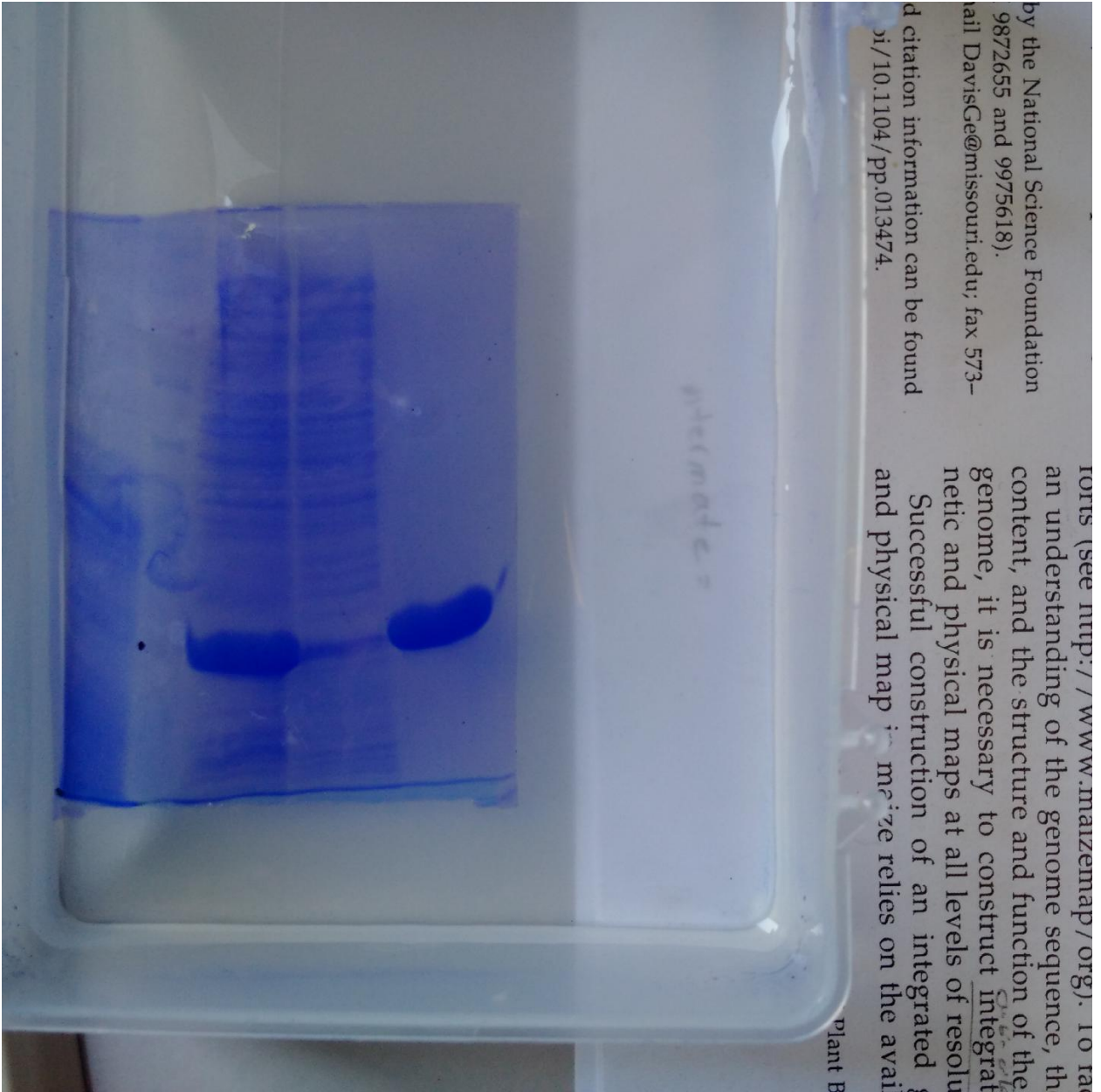
## Raw-cloning analyses with caption



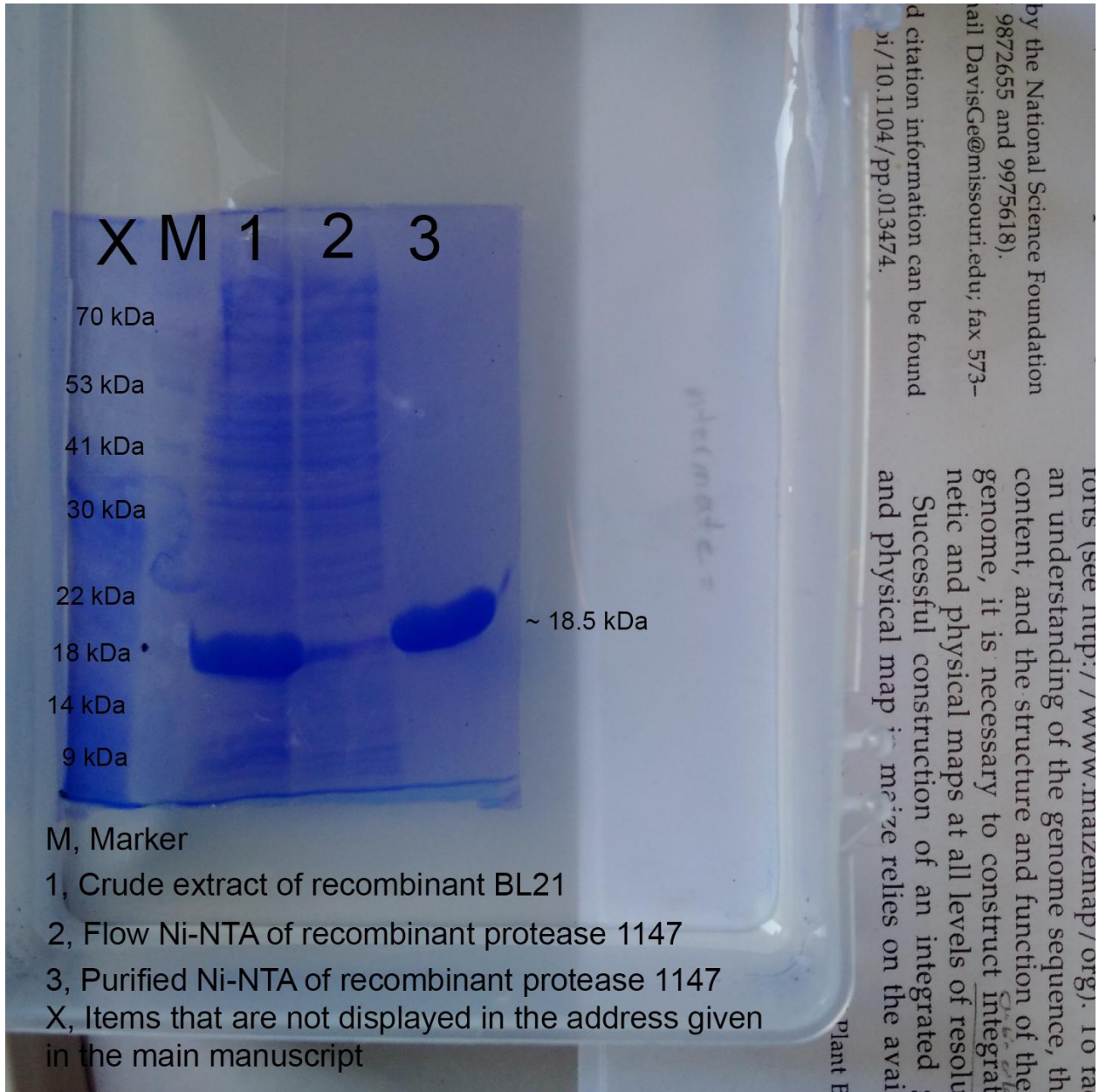
The figure of the address given in the main manuscript.



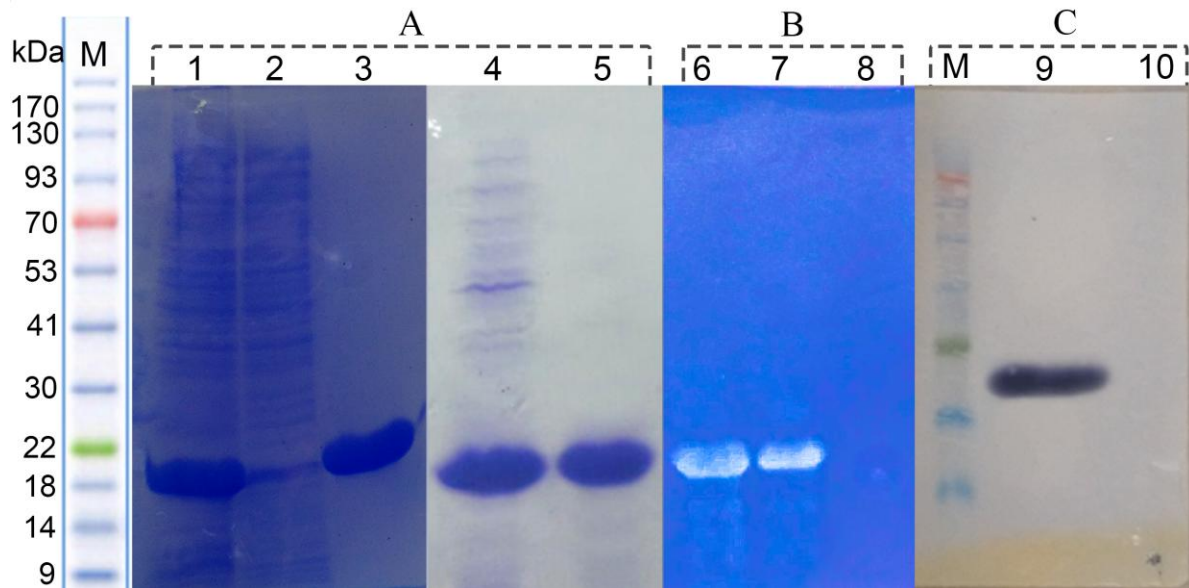
# Raw-SDS-PAGE analyses



Raw-SDS-PAGE analyses with caption

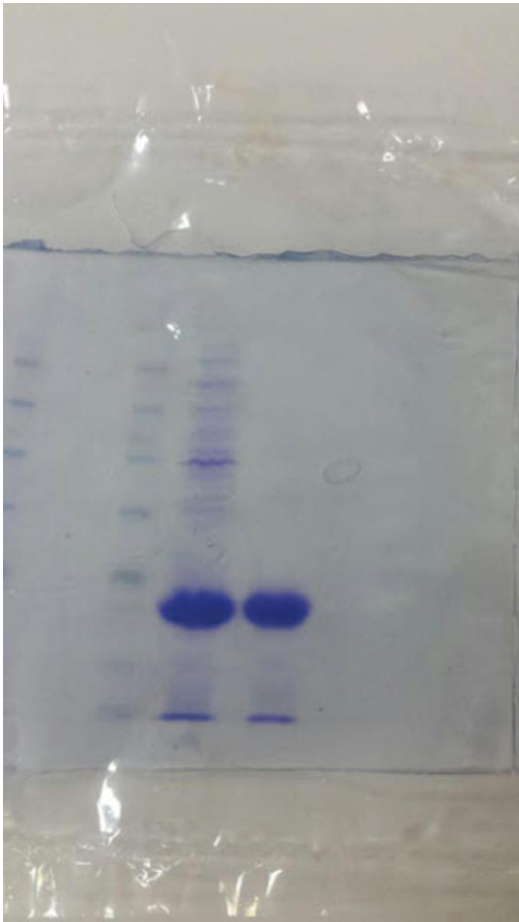


The **figure 8A** of the address given in the main manuscript.



**Fig 8. SDS-PAGE, western blot and zymogram analysis of recombinant protease 1147.** (A) SDS-PAGE analysis of recombinant protease 1147. Lane 1) crude extract of recombinant BL21, lane 2) crude extract of non-recombinant BL21 (negative control), lane 3) Ni-NTA purified.

Raw-SDS-PAGE heat shock purified analyses

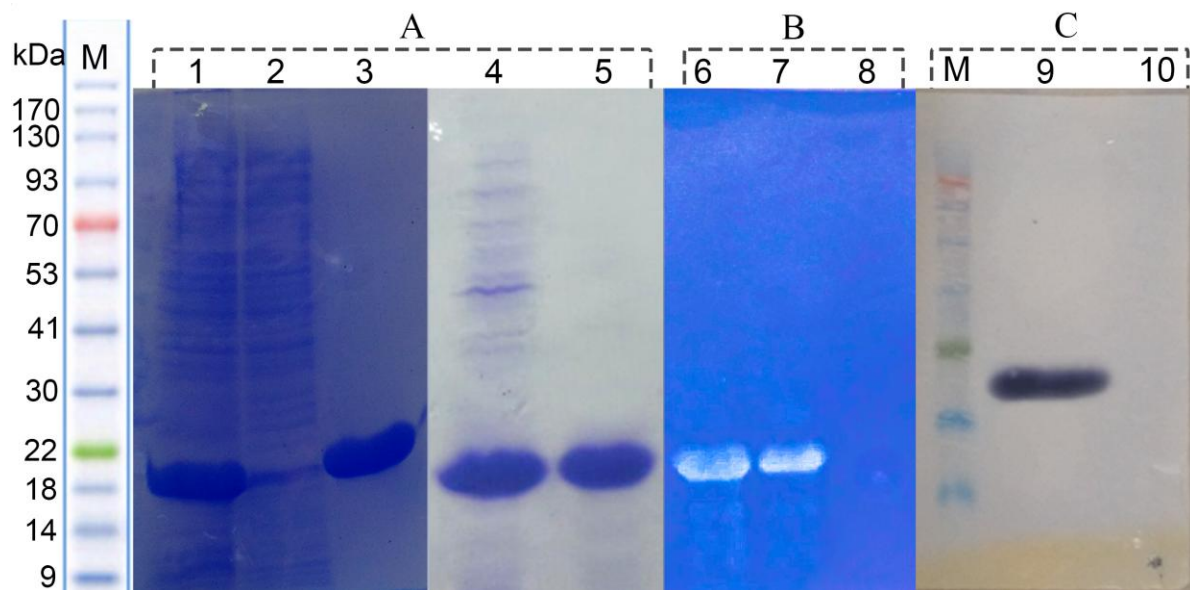


Raw-SDS-PAGE heat shock purified analyses with caption





The **figure 8A** of the address given in the main manuscript.



**Fig 8. SDS-PAGE, western blot and zymogram analysis of recombinant protease 1147.** (A) SDS-PAGE analysis of recombinant protease 1147. Lane 4) crude extract of recombinant BL21 and lane 5) heat shock purified recombinant protease 1147.

Raw-NATIVE-PAGE zymogram analyses



Raw-NATIVE-PAGE zymogram analyses with caption

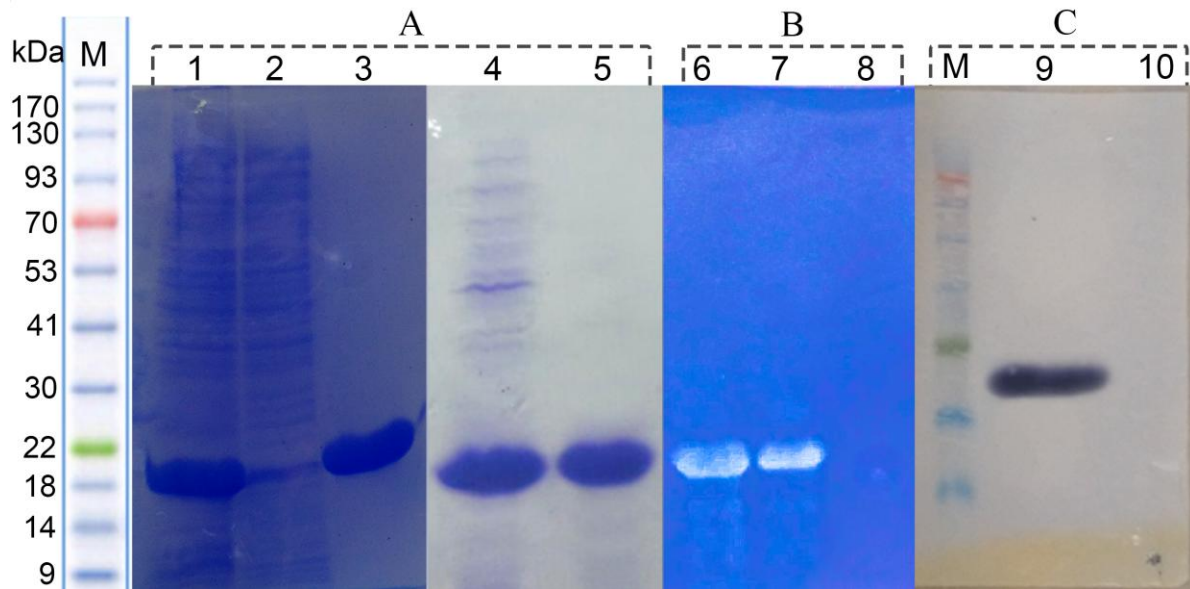
1, Ni-NTA purified  
Native-PAGE zymogram

2, Crude extract of  
recombinant BL21  
Native-PAGE zymogram

3, Crude extract of  
non-recombinant BL21  
(negative control)  
Native-PAGE zymogram

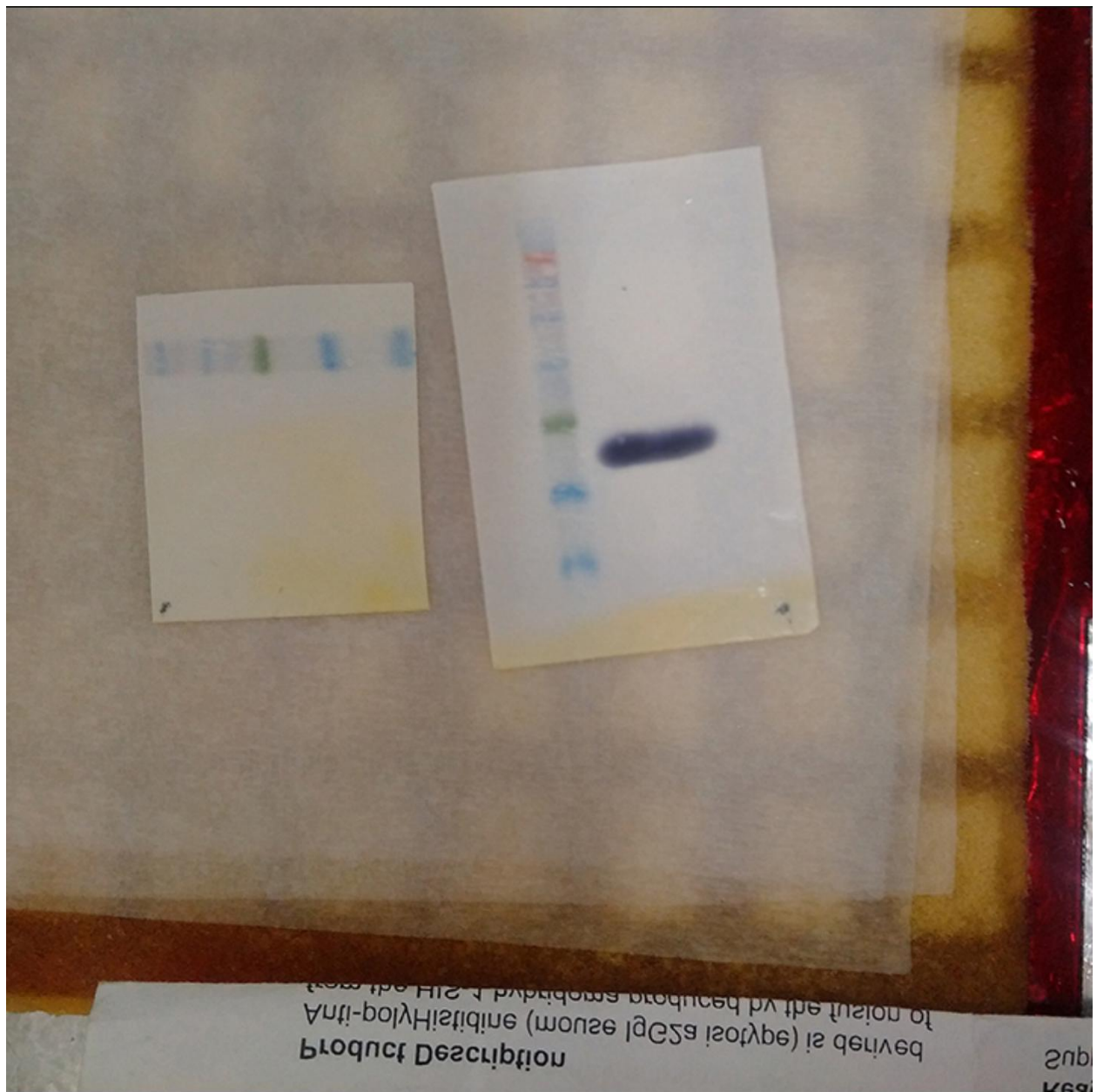


The **figure 8B** of the address given in the main manuscript.

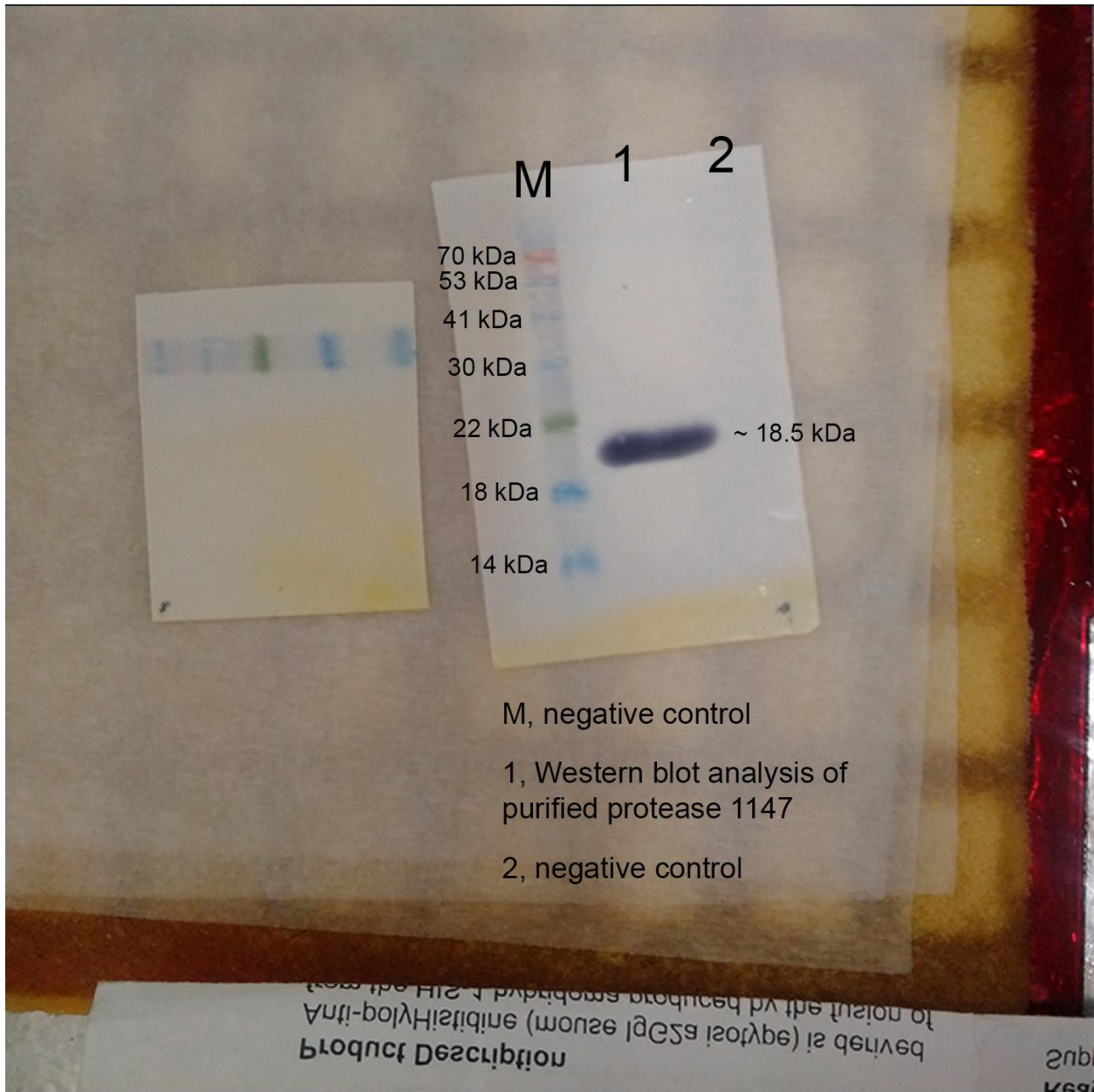


**Fig 8. SDS-PAGE, western blot and zymogram analysis of recombinant protease 1147. (B) Native-PAGE zymogram analysis of 6) Ni-NTA affinity column and, 7) heat shock single-step method purified protease 1147, 8) crude extract of non-recombinant BL21 (negative control).**

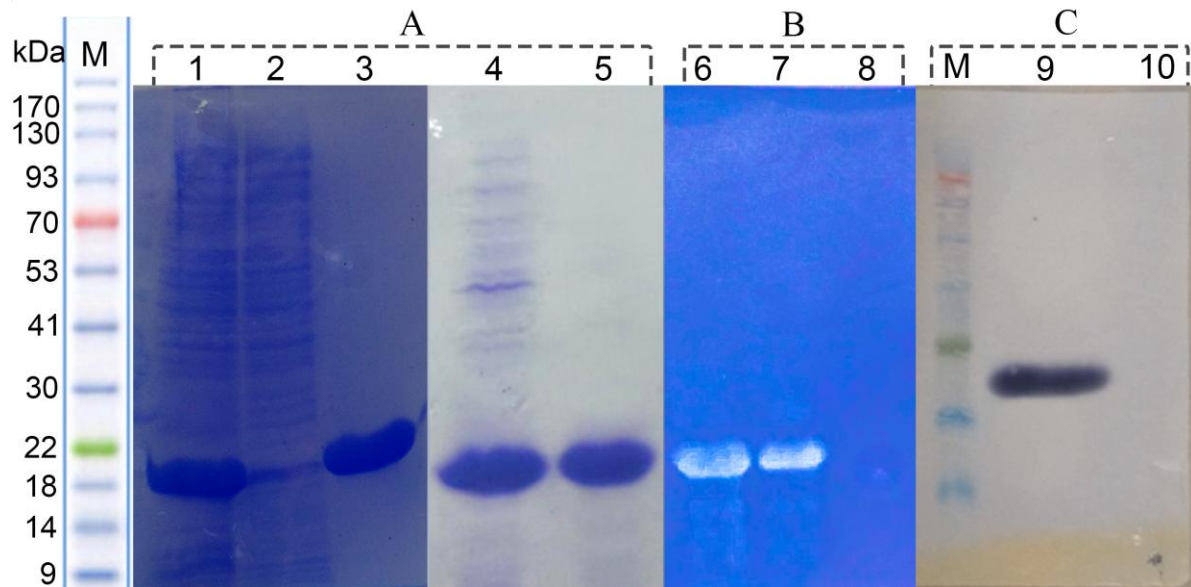
Raw-Western blot analyses



Raw-Western blot analyses with caption



The **figure 8C** of the address given in the main manuscript.



**Fig 8. SDS-PAGE, western blot and zymogram analysis of recombinant protease 1147. (C) Western blot analysis of (9) Ni-NTA affinity column purified protease 1147, and (10) negative control.**