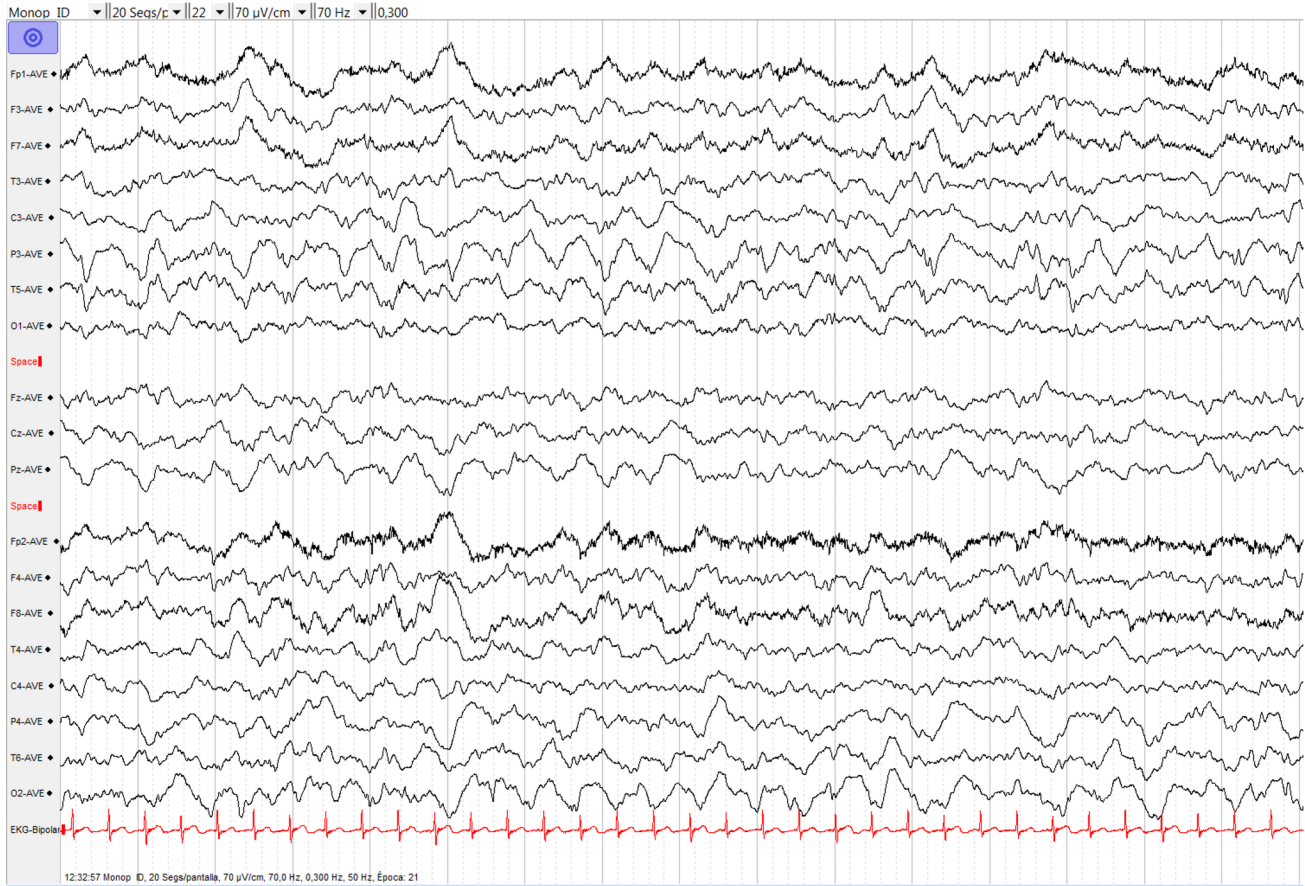
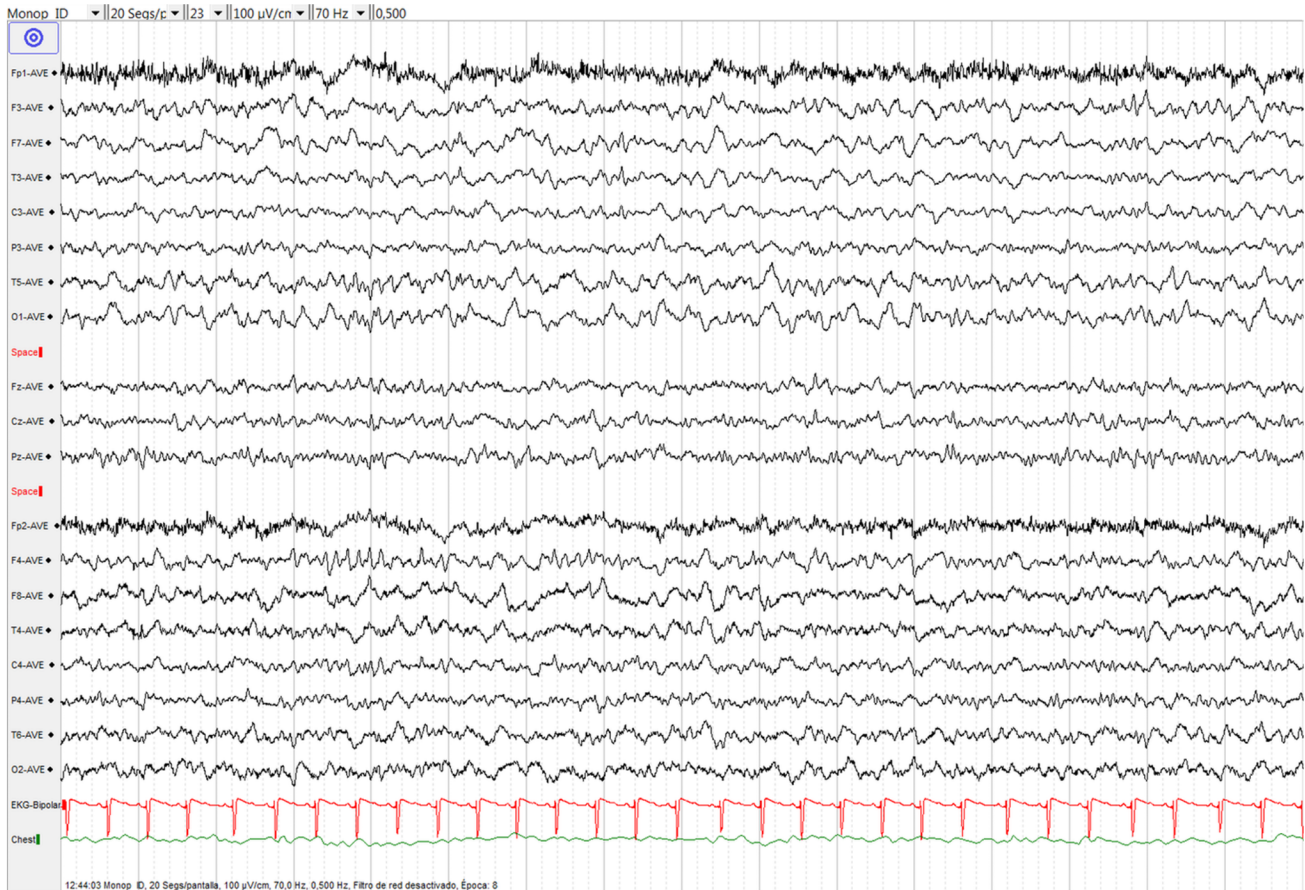


**Patient 1**

Upper image: EEG the day of the first ECT, in the ICU (before de session); lower image: EEG the day after the last ECT session.



Continuos epileptiform discharges, with rhythmic delta epileptiform discharges in left temporo-parietal regions, with diffusion to right occipital region and sharp fast rhythm superimposed.



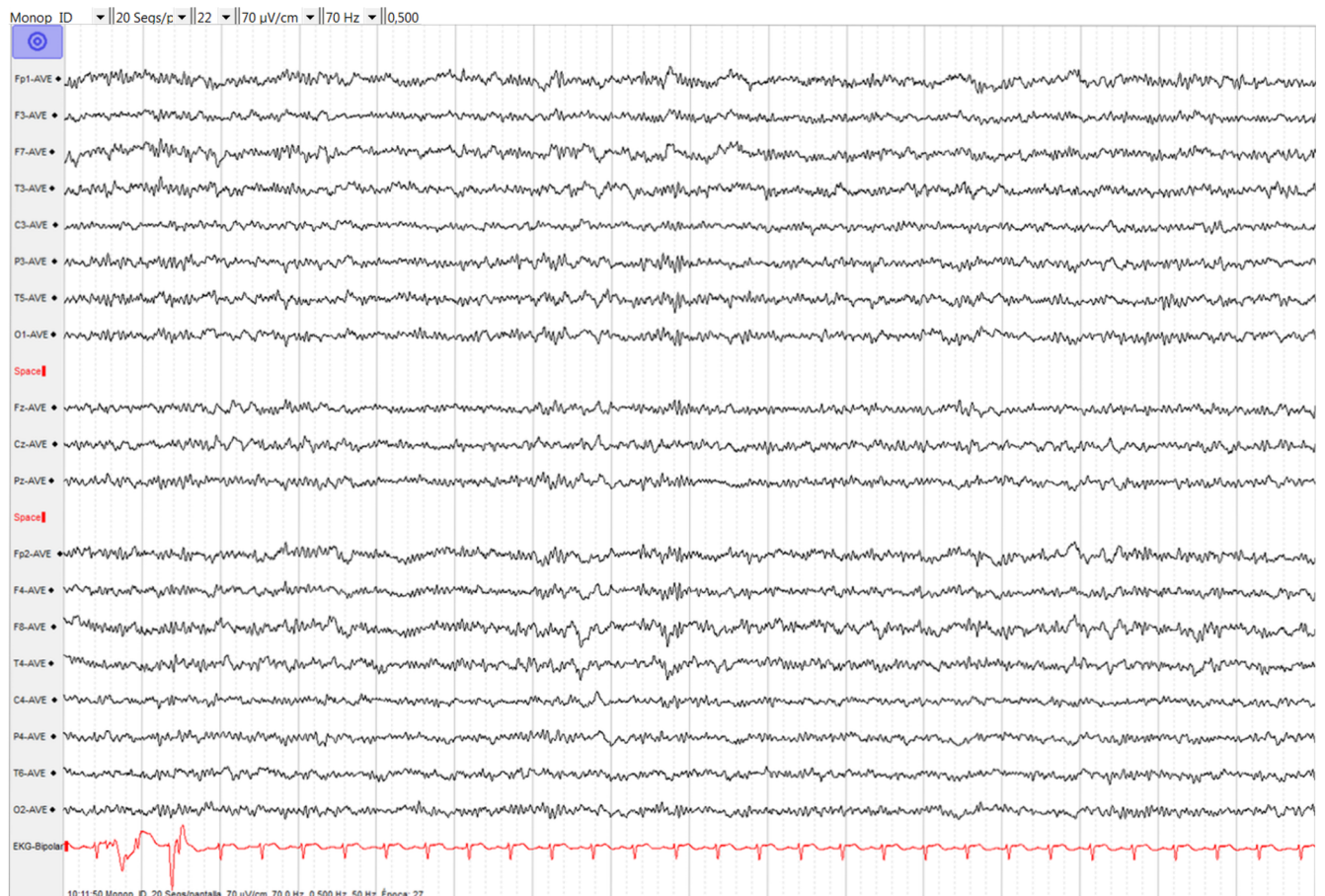
Improvement of the background activity, with interictal activity sharp waves with right front-central predominance.

**Patient 2**

Upper image: EEG the day of the first ECT, in the ICU (before de session); lower image: EEG the day after the last ECT session.



Continuous high amplitude > 2,5 Hz epileptiform discharges, with bilateral frontal predominance and superimposed sharp fast rhythms.

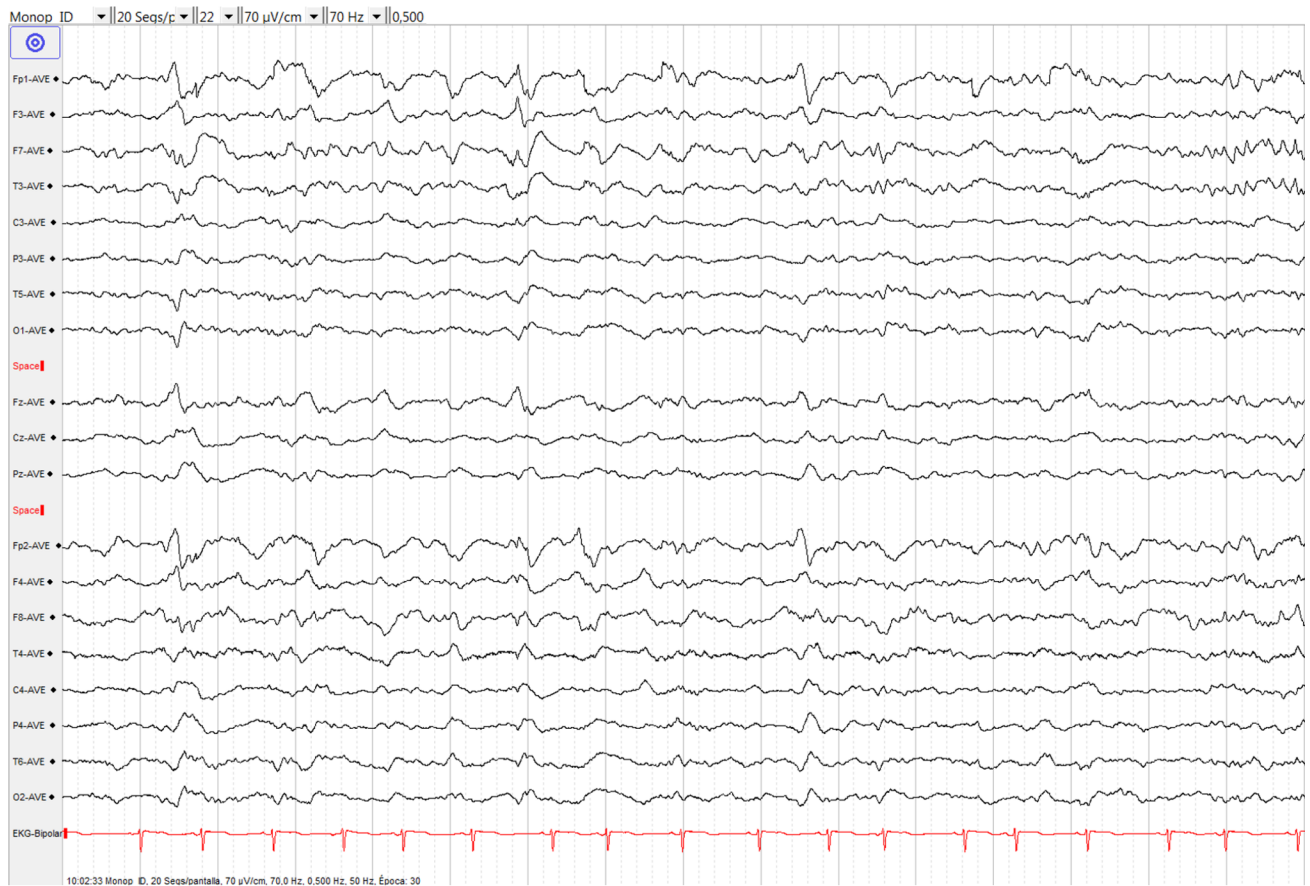


Improvement of the background activity, with diffuse fast rhythms.

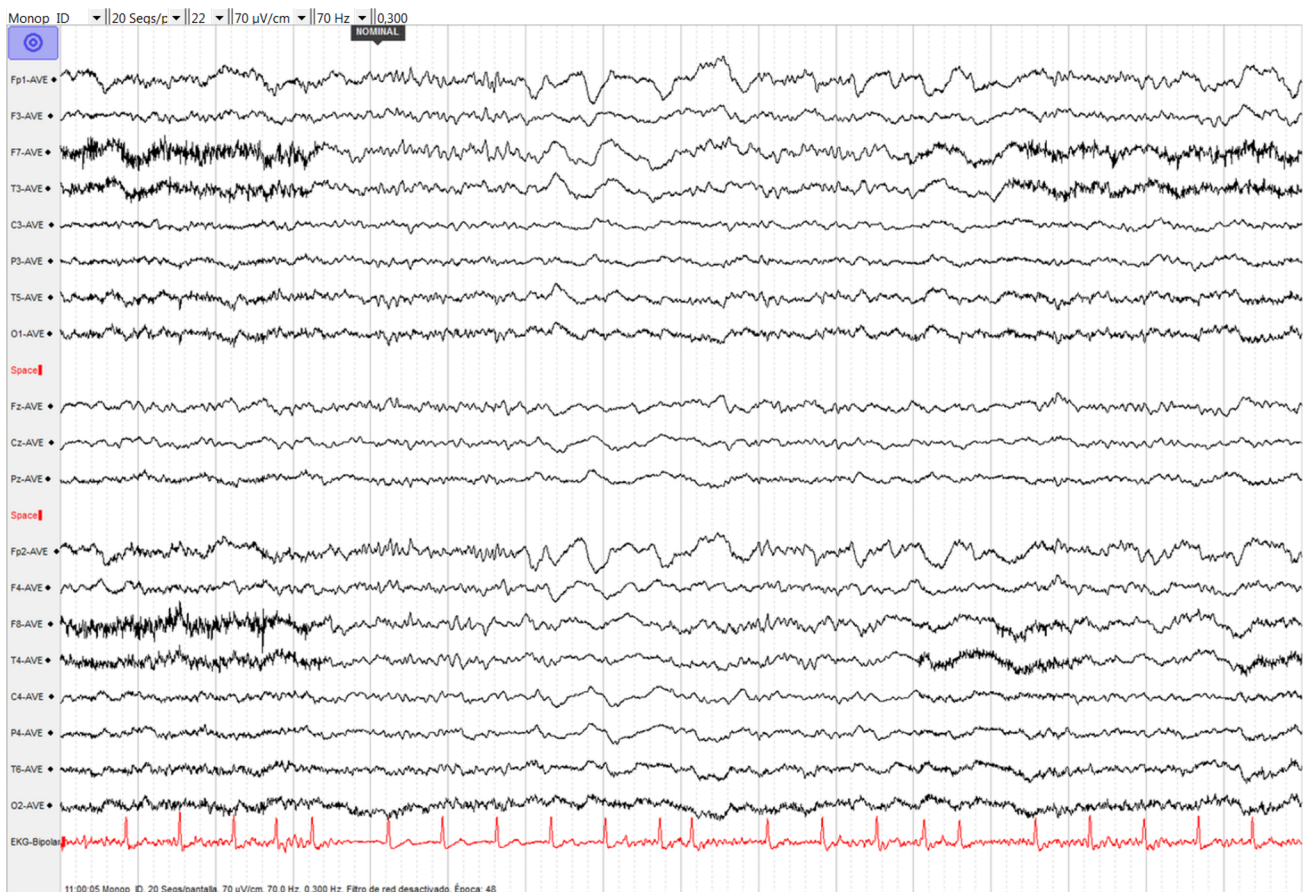


**Patient 3**

Upper image: EEG the day of the first ECT, in the ICU (before the session); lower image: EEG the day after the last ECT session.



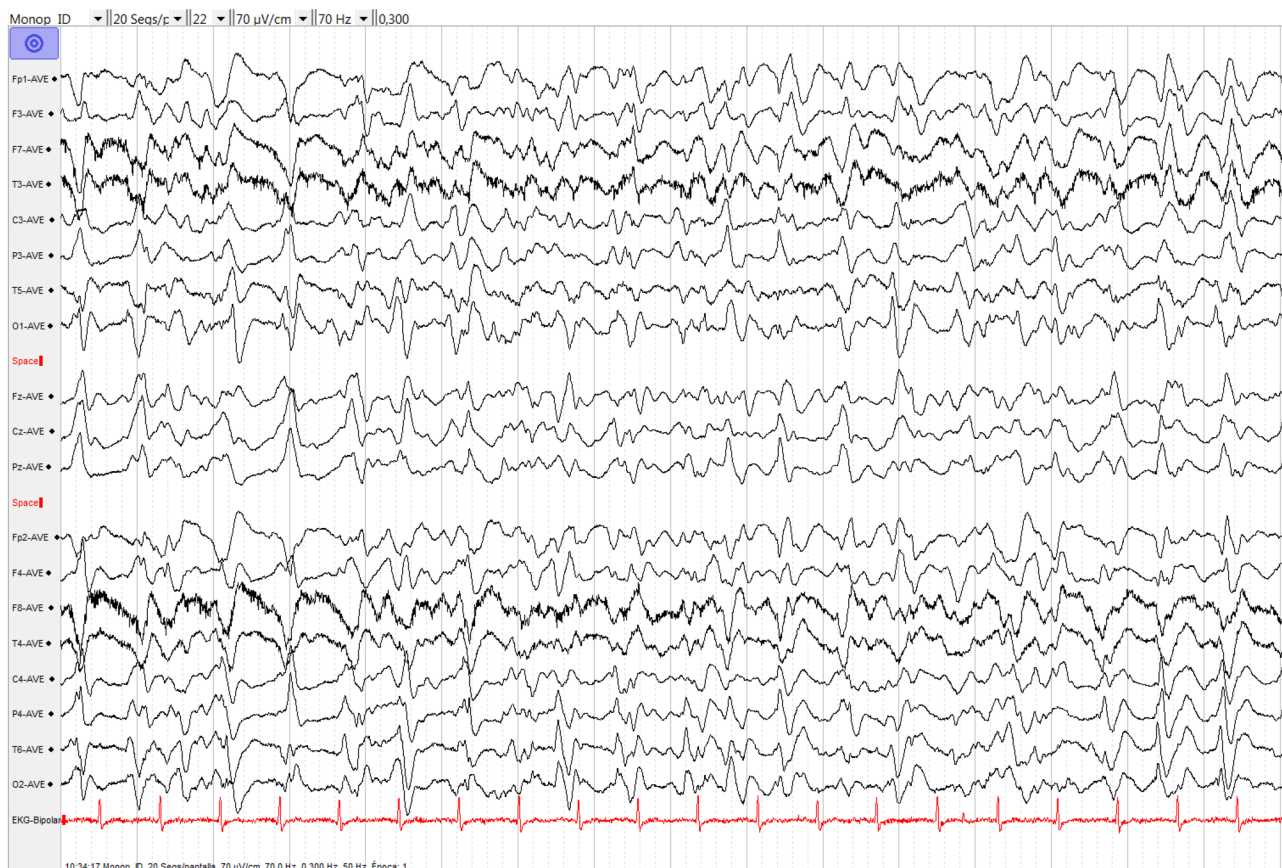
Rhythmic epileptiform discharges in frontal regions, with superimposed sharp rhythmic frequencies in frontal regions.



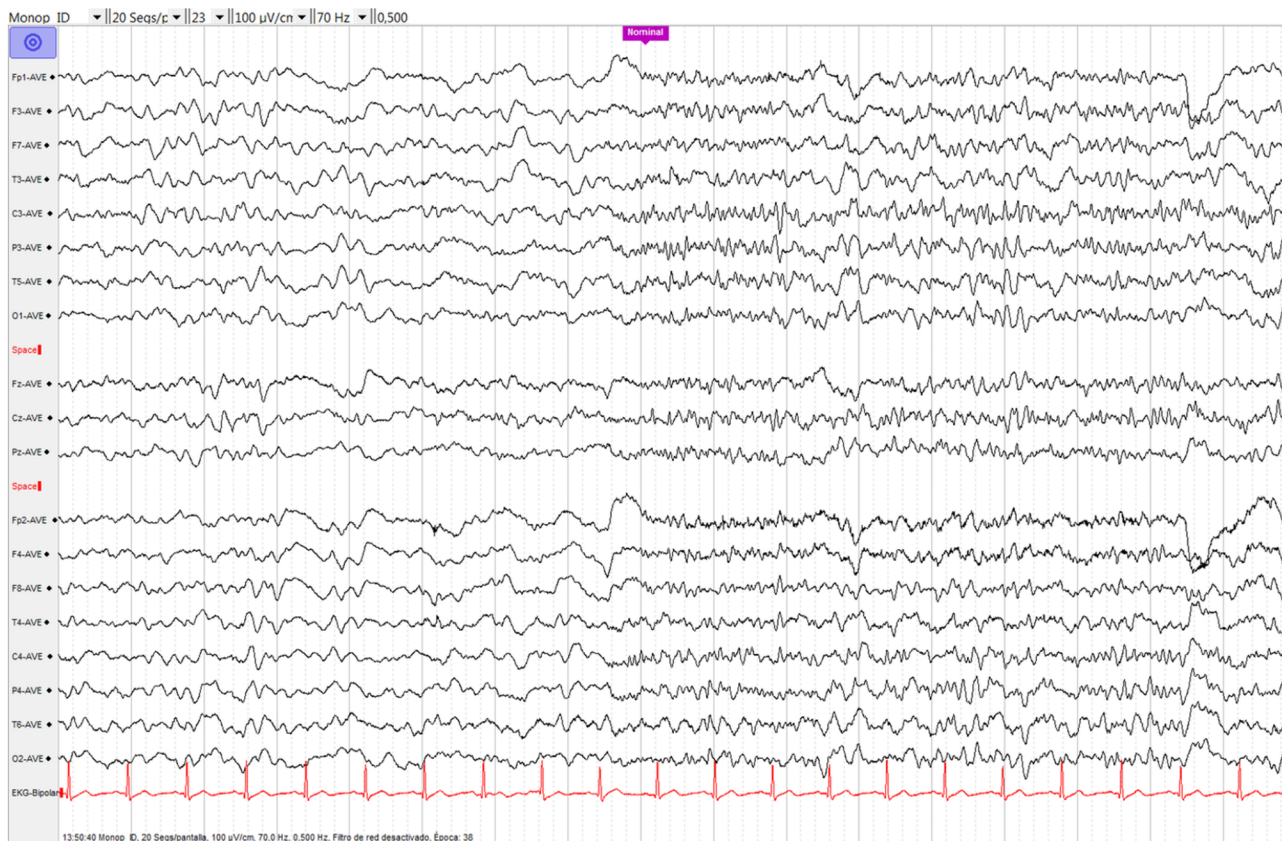
Improvement of the background activity with reactivity to nominal stimulus.

**Patient 4**

Upper image: EEG the day of the first ECT, in the ICU (before the session); lower image: EEG the day after the last ECT session.



Multifocal continuous epileptiform discharges with superimposed sharp fast rhythms.

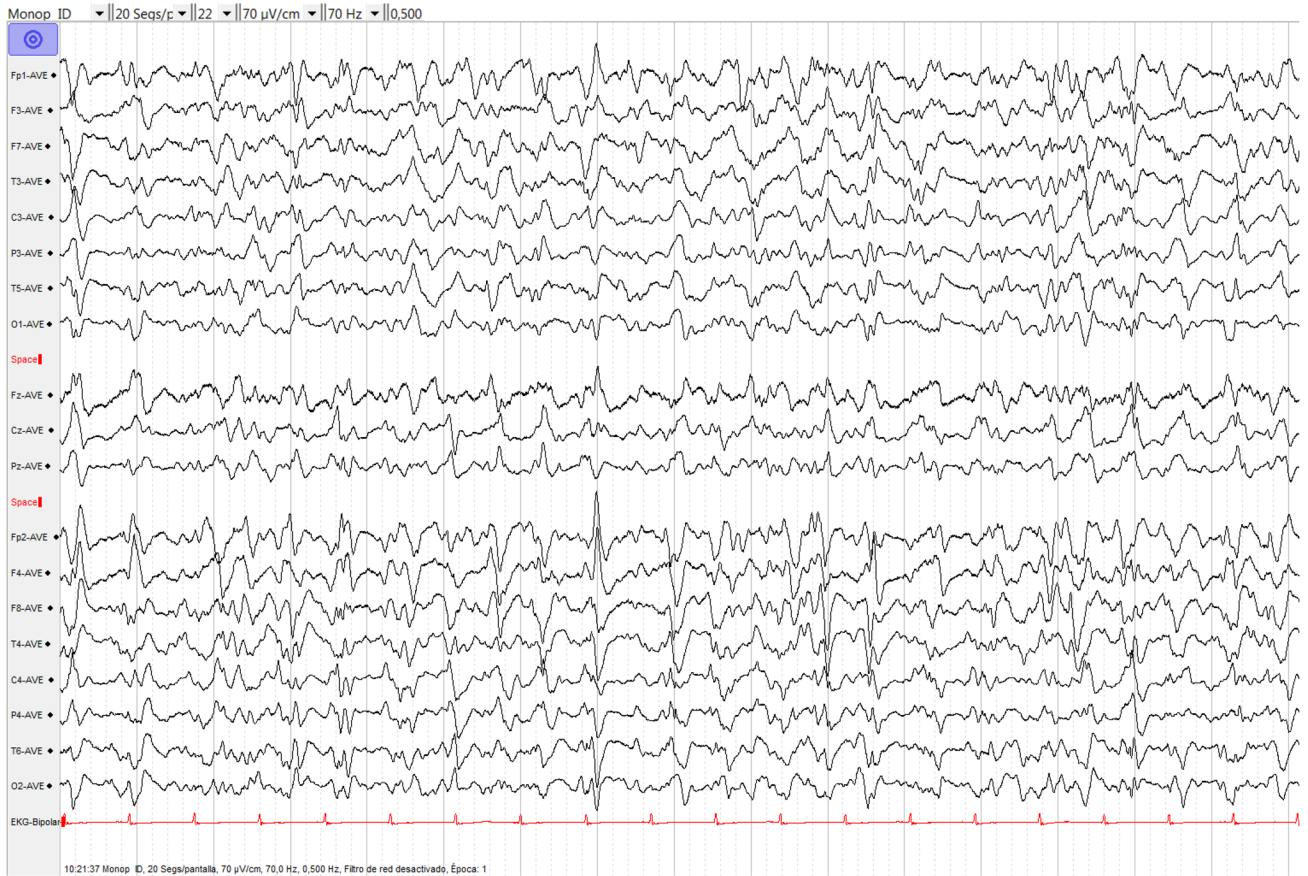


Improvement of the background activity. Reactivity to nominal stimulus.

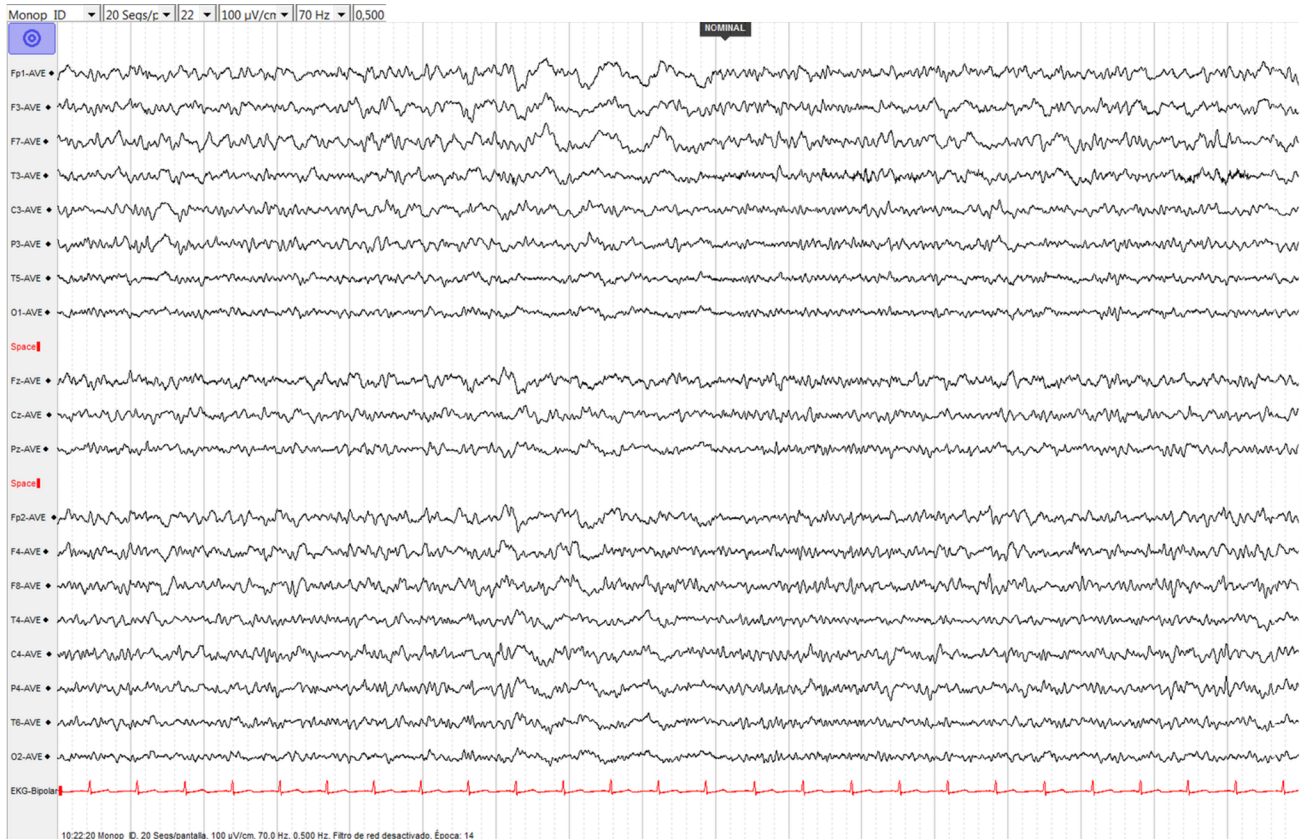


**Patient 5**

**Upper image: EG the day of the first ECT, in the ICU (before de session); lower image: EEG the day after the last ECT session.**



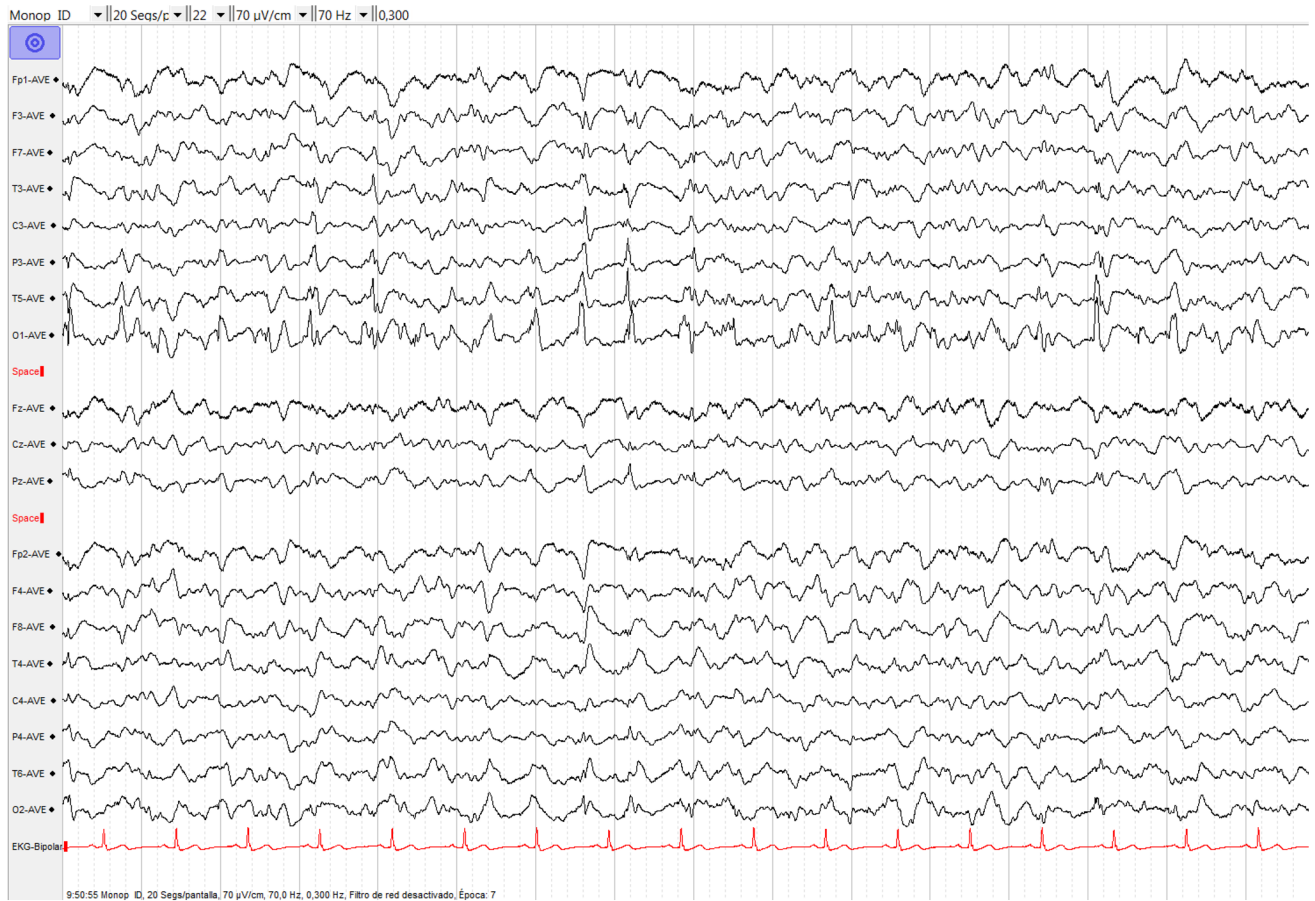
**Continuous multifocal epileptiform discharges with right frontal predominance, with superimposed sharp fast rhythms.**



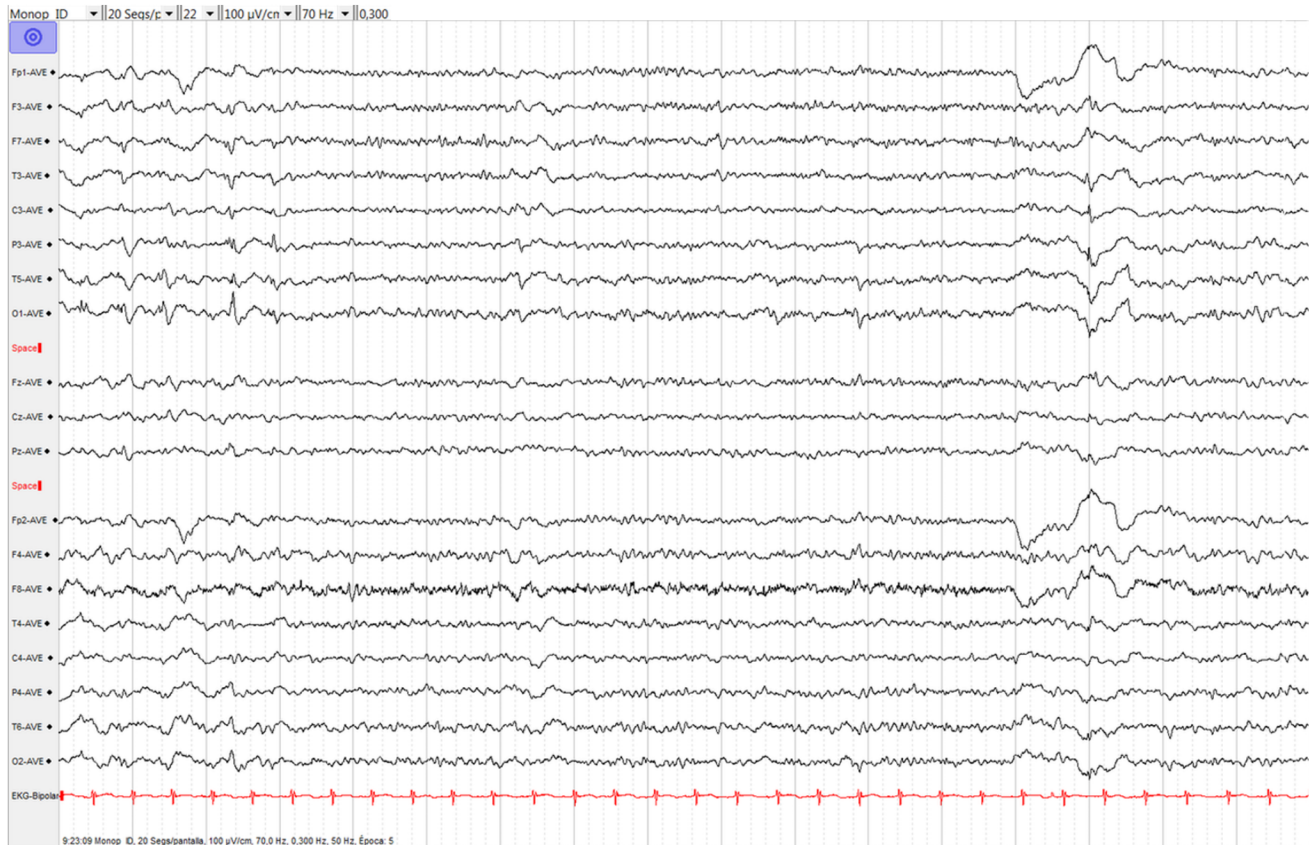
**Improvement of the background activity. Reactivity to nominal stimulus.**

**Patient 6**

Upper image: EEG the day of the first ECT, in the ICU (before de session); lower image: EEG the day after the last ECT session.



Focal continuous epileptiform discharges in left temporo-parieto-occipital regions, with superimposed sharp fast rhythms.



Improvement of the background activity. Interictal epileptiform discharges in left parieto-occipital regions