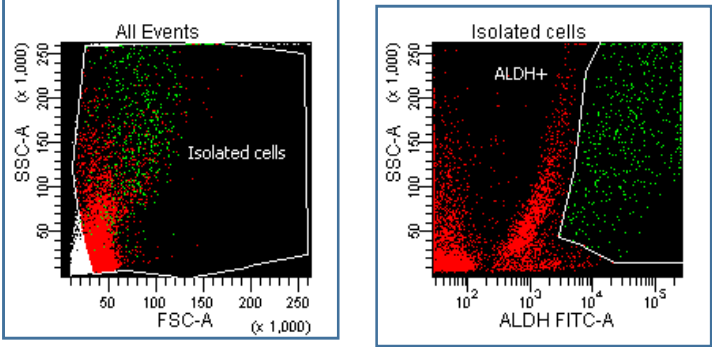
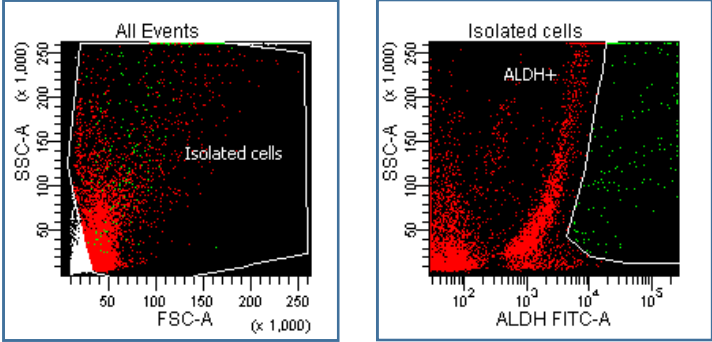


SUPPLEMENTARY MATERIAL

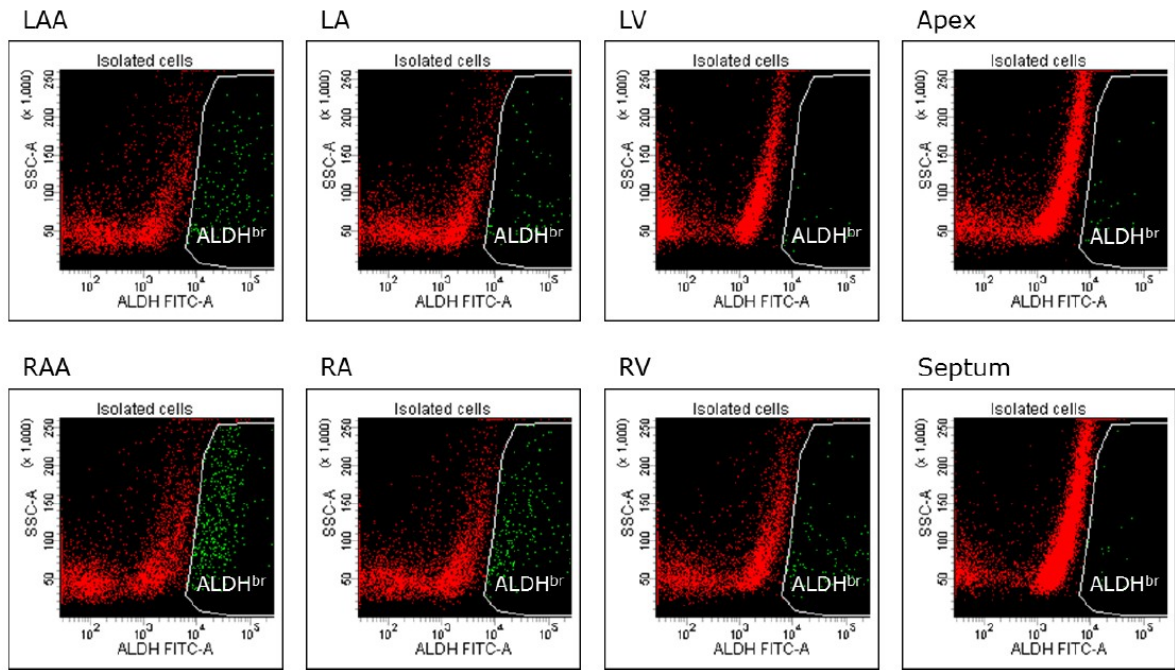
RAA



LAA



**Figure 1. Percentages of ALDH<sup>br</sup> cells in the human atrial appendage.** Representative FACS plots showing the percentage of ALDH<sup>br</sup> cells in right (top) and left atrial appendage (bottom). LAA = left atrial appendage; RAA = right atrial appendage.



**Figure 2. Percentages of ALDH<sup>br</sup> cells in different compartments of the pig heart.** Representative FACS plots showing the percentage of ALDH<sup>br</sup> cells in different compartments of the pig heart. LA = left atrium; LAA = left atrial appendage; LV = left ventricle; RA = right atrium; RAA = right atrial appendage; RV = right ventricle.