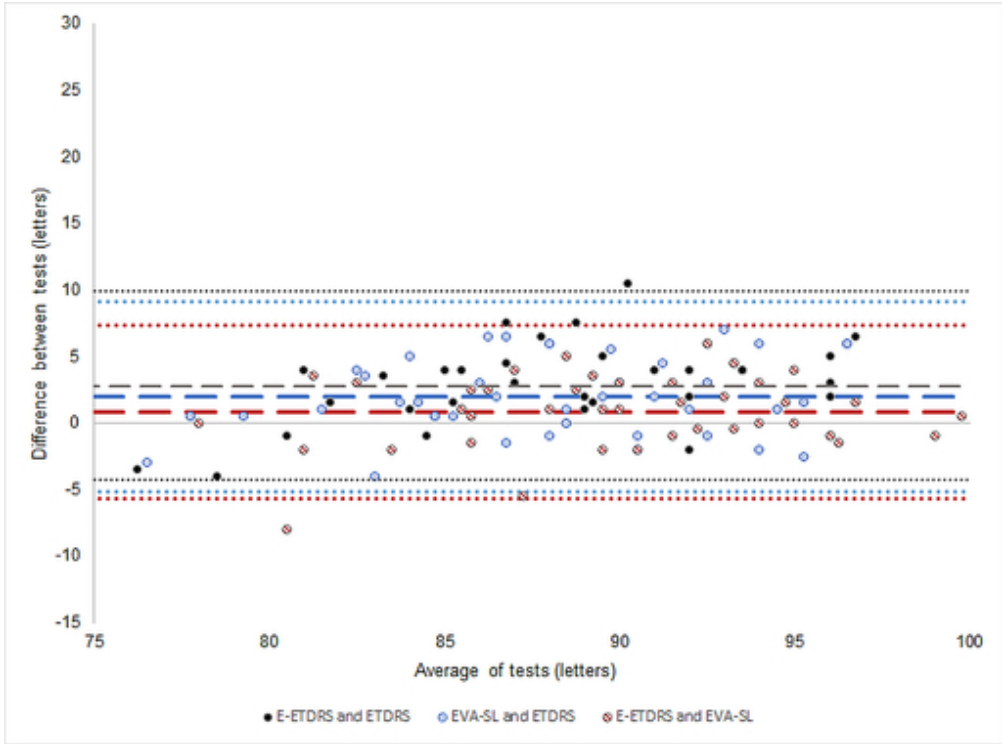


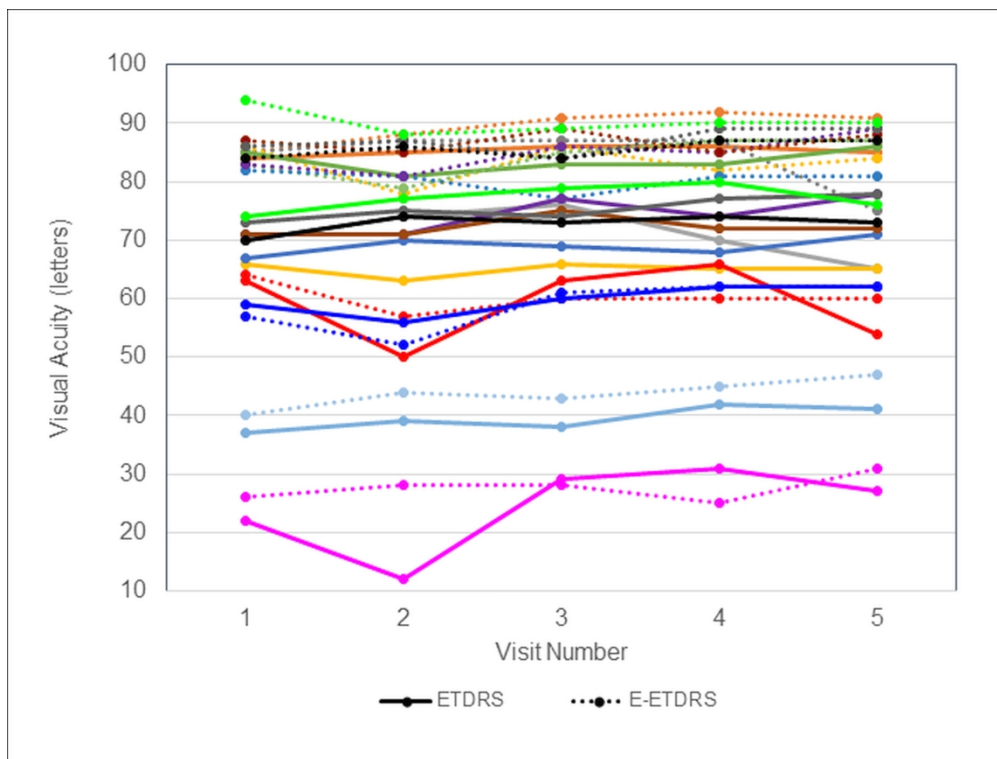
ETDRS						E-ETDRS					
Patient	Screen	Day 7	Month 1	Month 3	Month 6	Patient	Screen	Day 7	Month 1	Month 3	Month 6
	1	2	3	4	5		1	2	3	4	5
1	84	85	86	86	85	1 EVA	85	88	91	92	91
2	70	74	76	70	65	2 EVA	85	87	87	87	75
3	66	63	66	65	65	3 EVA	86	78	86	82	84
4	85	81	83	83	86	4 EVA	83	79	85	87	87
5	67	70	69	68	71	5 EVA	82	81	77	81	81
6	71	71	77	74	78	6 EVA	83	81	86	85	89
7	71	71	75	72	72	7 EVA	87	85	89	85	88
8	73	75	74	77	78	8 EVA	86	87	84	89	89
9	74	77	79	80	76	9 EVA	94	88	89	90	90
10	70	74	73	74	73	10 EVA	84	86	84	87	87
11	63	50	63	66	54	11 EVA	64	57	60	60	60
12	37	39	38	42	41	12 EVA	40	44	43	45	47
13	22	12	29	31	27	13 EVA	26	28	28	25	31
14	59	56	60	62	62	14 EVA	57	52	61	62	62

Supplementary Table 1: Longitudinal measurements with ETDRS charts and automated ETDRS (E-ETDRS) charts.

1  
2  
3  
4  
5  
6  
7  
8  
9  
10  
11  
12  
13  
14  
15  
16  
17  
18  
19  
20  
21  
22  
23  
24  
25  
26  
27  
28  
29  
30  
31  
32  
33  
34  
35  
36  
37  
38  
39  
40  
41  
42  
43  
44  
45  
46  
47  
48  
49  
50  
51  
52  
53  
54  
55  
56  
57  
58  
59  
60



43x32mm (300 x 300 DPI)



177x134mm (300 x 300 DPI)

1  
2  
3  
4  
5  
6  
7  
8  
9  
10  
11  
12  
13  
14  
15  
16  
17  
18  
19  
20  
21  
22  
23  
24  
25  
26  
27  
28  
29  
30  
31  
32  
33  
34  
35  
36  
37  
38  
39  
40  
41  
42  
43  
44  
45  
46  
47  
48  
49  
50  
51  
52  
53  
54  
55  
56  
57  
58  
59  
60

**Supplementary Figure 1:** Bland-Altman plot from figure 3B with adjusted X-axis to allow viewing of the scatter of points.

**Supplementary Figure 2:** Scatter graph VA results over 5 visits for 14 eyes with ETDRS results represented with solid lines and E-ETDRS results represented with dashed lines.