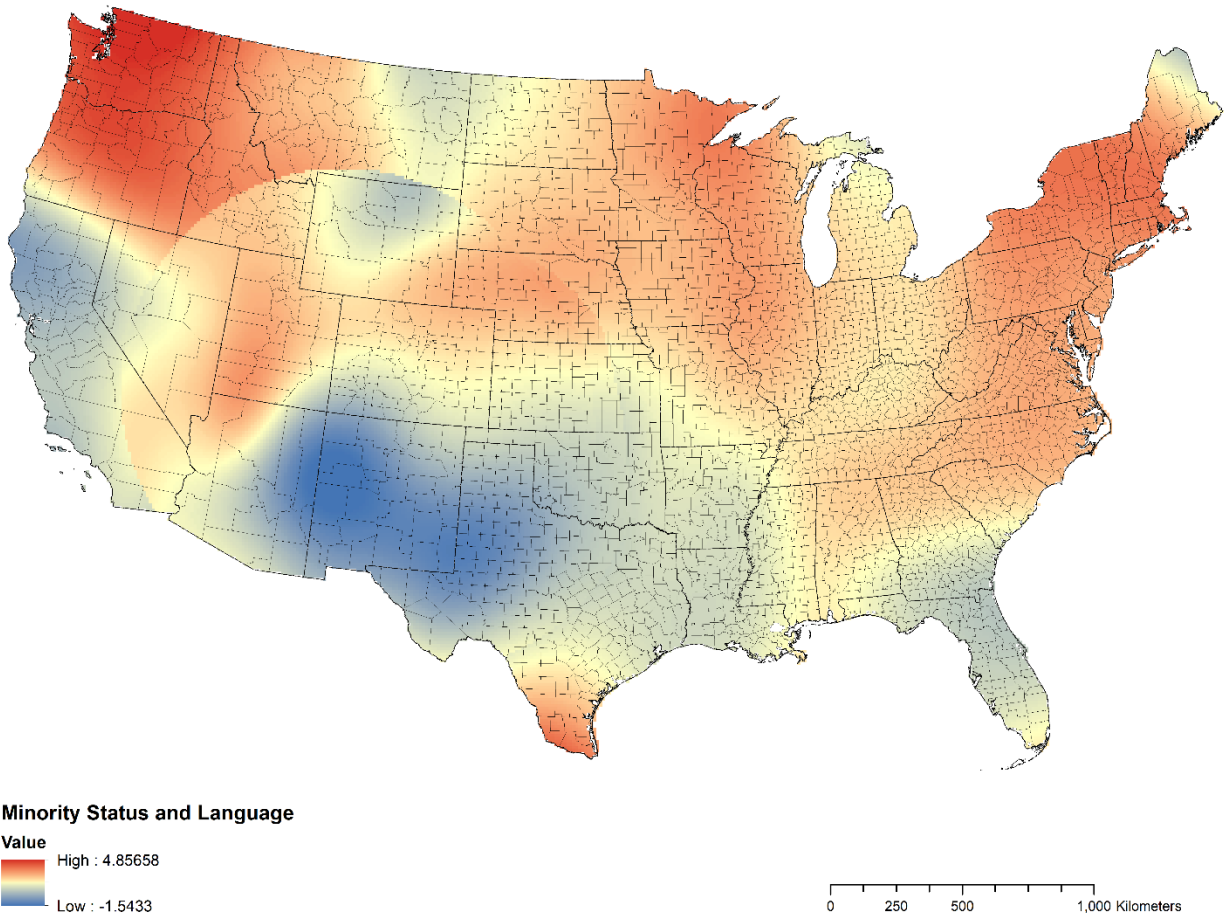


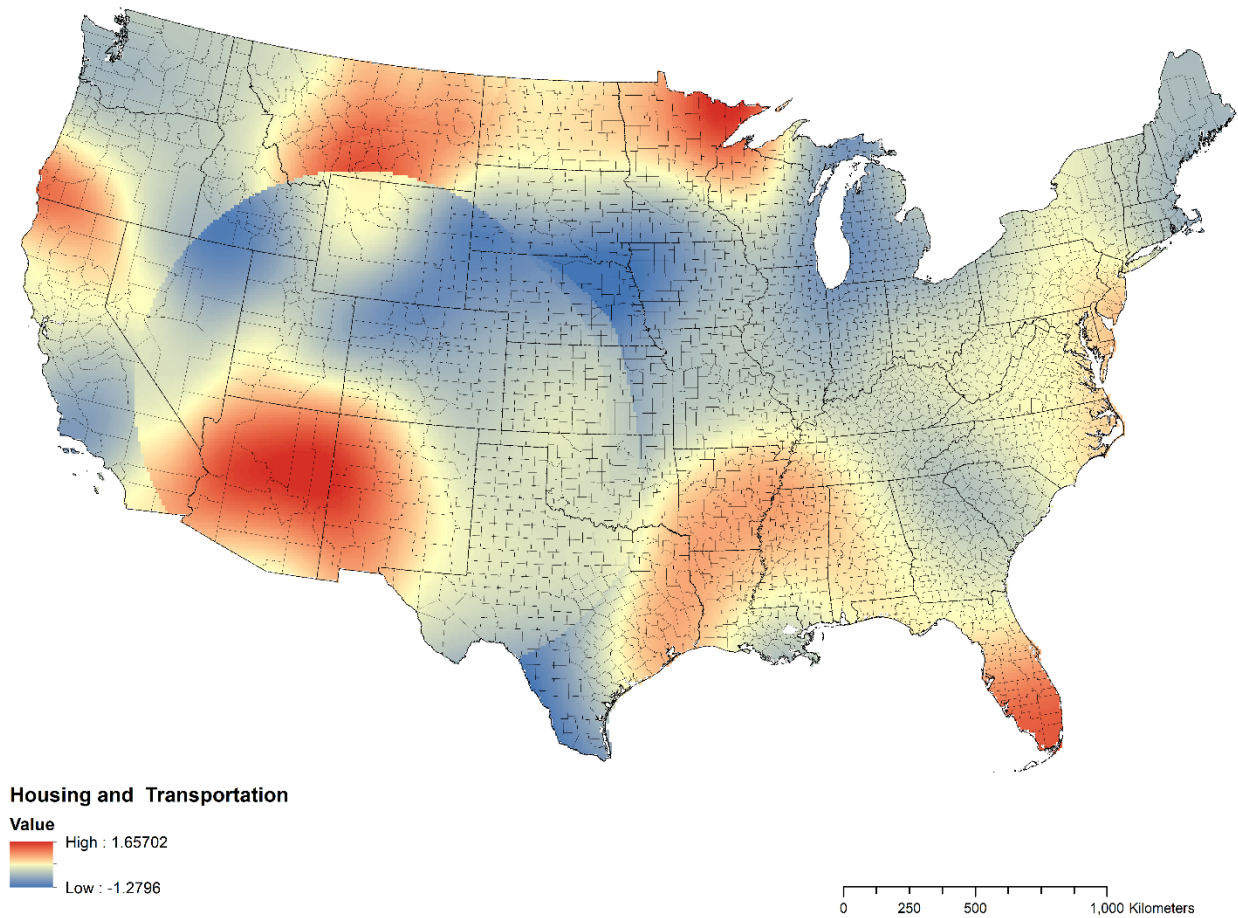
Appendix
The Impact of Social Vulnerability on COVID-19 in the U.S.:
An Analysis of Spatially Varying Relationships
Karaye and Horney

Appendix Figure 1. Coefficient map for the association between minority status and language and COVID-19 case counts in the U.S. (N=3,108).



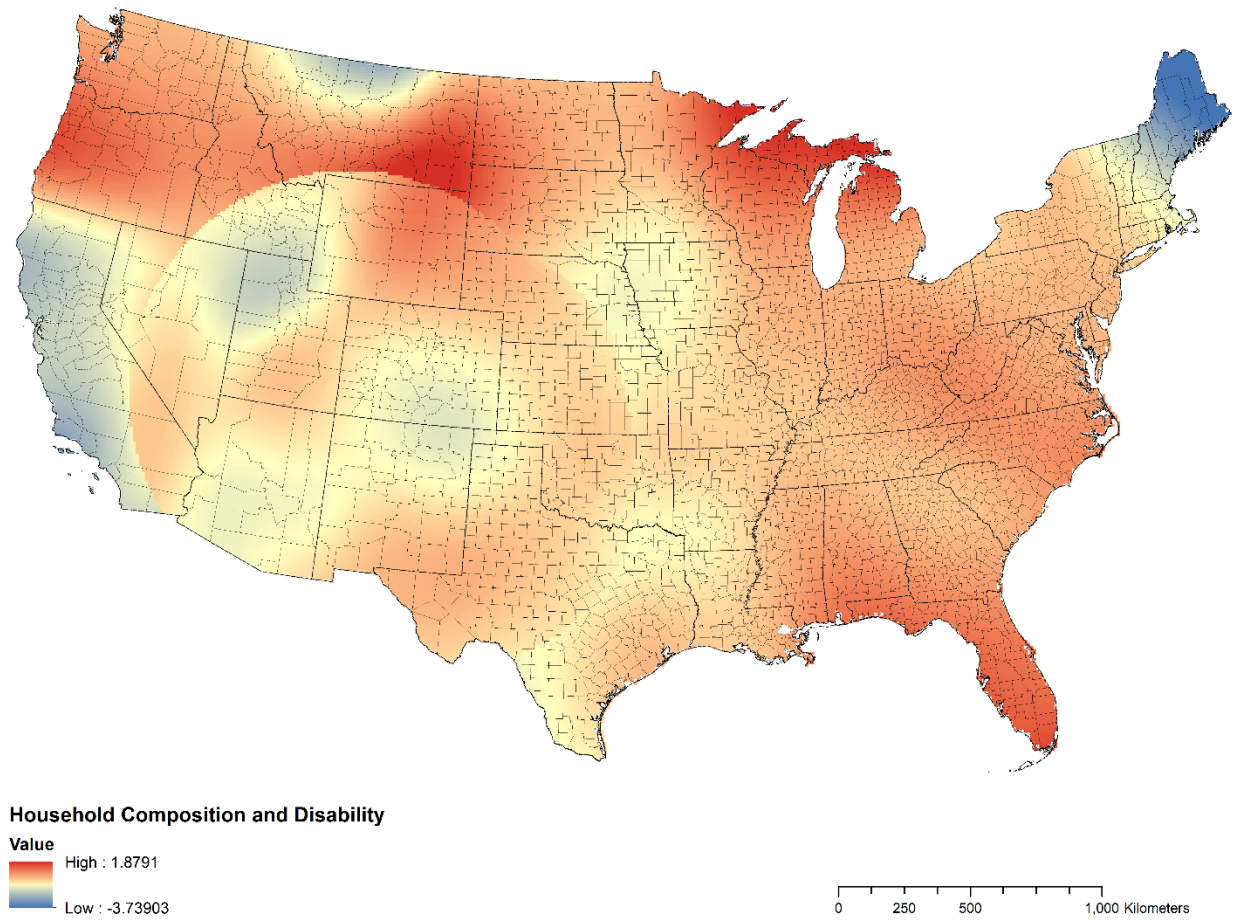
Appendix
The Impact of Social Vulnerability on COVID-19 in the U.S.:
An Analysis of Spatially Varying Relationships
Karaye and Horney

Appendix Figure 2. Coefficient map for the association between housing and transportation and COVID-19 case counts in the U.S. (N=3,108).



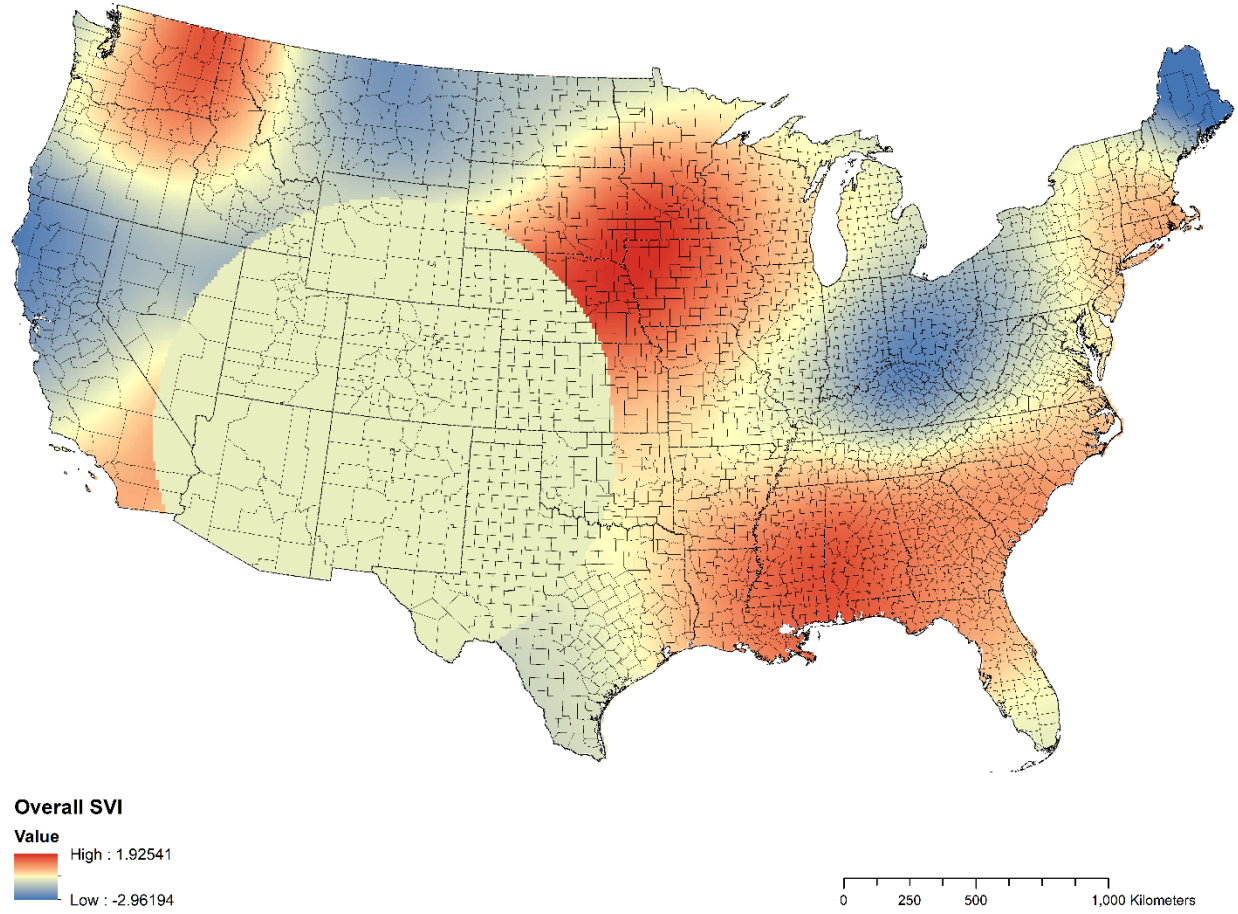
Appendix
The Impact of Social Vulnerability on COVID-19 in the U.S.:
An Analysis of Spatially Varying Relationships
Karaye and Horney

Appendix Figure 3. Coefficient map for the association between household composition and disability and COVID-19 case counts in the U.S. (N=3,108).



Appendix
The Impact of Social Vulnerability on COVID-19 in the U.S.:
An Analysis of Spatially Varying Relationships
Karaye and Horney

Appendix Figure 4. Coefficient map for the association between overall SVI and COVID-19 case counts in the U.S. (N=2,844).



Appendix
The Impact of Social Vulnerability on COVID-19 in the U.S.:
An Analysis of Spatially Varying Relationships
Karaye and Horney

Appendix Table 1. Multiple Linear Regression of Log-Transformed COVID-19 Case Counts (per 100,000) on Social Vulnerability Variables (N=2,844)

^b Variable	^a e^{β}	Robust p -value
Poverty	0.78	0.09
Unemployed	0.96	0.65
Per capita income	1.33*	0.04
No high school diploma	1.42*	0.01
Aged ≥ 65 years	0.92	0.51
Aged ≤ 17 years	0.89	0.32
Disability	0.40*	<0.001
Single parent household	1.18	0.09
Minority	6.23*	<0.001
English less than well	1.22	0.05
Multiunit housing	0.76*	0.01
Mobile home	0.60*	<0.001
Crowded	0.79*	0.02
No vehicle	0.96	0.70
Institutionalized qtrs	0.81*	0.01
Model diagnostics		
Multiple R^2	0.33	–
Adjusted R^2	0.32	–
AICc	8158.33	–
Koenker (BP) statistic	144.46*	<0.001

Notes: Boldface indicates statistical significance ($*p < 0.05$).

^aThe outcome variable has been log-transformed; model coefficients have been exponentiated to ease interpretation.

^bVariable definitions: Poverty- percentage of persons in poverty is in the 90th percentile; Unemployed- percentage of civilians unemployed is in the 90th percentile; Per capita income- Per capita income is in the 90th percentile; No High School Diploma- percentage of persons with no high school diploma is in the 90th percentile; Aged ≥ 65 years- percentage of persons aged ≥ 65 years is in the 90th percentile; Aged ≤ 17 years- percentage of persons aged ≤ 17 years is in the 90th percentile; Disability- percentage of persons with disability is in the 90th percentile; Single Parent Household- percentage of single parent households is in the 90th percentile; Minority- percentage of minority is in the 90th percentile; English less than well- percentage of those with limited English is in the 90th percentile; Multiunit Housing- percentage of households in multi-unit housing is in the 90th percentile; Mobile Home- percentage of mobile homes is in the 90th percentile; Crowded- percentage of crowded households is in the 90th percentile; No Vehicle- percentage of households with no vehicles is in the 90th percentile; Institutionalized qtrs., percentage of persons in institutionalized quarters is in the 90th percentile. The model had been adjusted for population size, population density, number of people tested, average daily sunlight, precipitation, air temperature, heat index, and fine particulate matter (PM_{2.5}).

Appendix
The Impact of Social Vulnerability on COVID-19 in the U.S.:
An Analysis of Spatially Varying Relationships
Karaye and Horney

Appendix Table 2. U.S. States and Counties at Increased Risk of COVID-19 Due to Overall Social Vulnerability ($\beta \geq 1.00$; $n=623$)

FIPS	STATE	COUNTY	Coef (β)
01001	ALABAMA	Autauga	1.52471465
01009	ALABAMA	Blount	1.273417974
01013	ALABAMA	Butler	1.538345567
01015	ALABAMA	Calhoun	1.254488597
01017	ALABAMA	Chambers	1.328636316
01031	ALABAMA	Coffee	1.424209165
01033	ALABAMA	Colbert	1.022852541
01039	ALABAMA	Covington	1.493106517
01043	ALABAMA	Cullman	1.244599256
01045	ALABAMA	Dale	1.36379229
01051	ALABAMA	Elmore	1.453275371
01055	ALABAMA	Etowah	1.199031598
01067	ALABAMA	Henry	1.307350052
01069	ALABAMA	Houston	1.304422728
01079	ALABAMA	Lawrence	1.102262781
01095	ALABAMA	Marshall	1.105097413
01097	ALABAMA	Mobile	1.606935922
01103	ALABAMA	Morgan	1.111202196
01111	ALABAMA	Randolph	1.302490672
01113	ALABAMA	Russell	1.315100781
01115	ALABAMA	St. Clair	1.323610826
01117	ALABAMA	Shelby	1.455445924
01121	ALABAMA	Talladega	1.377595376
12033	FLORIDA	Escambia	1.579520774
12113	FLORIDA	Santa Rosa	1.549495898
13015	GEORGIA	Bartow	1.034442574
13045	GEORGIA	Carroll	1.215909873
13057	GEORGIA	Cherokee	1.010085255
13073	GEORGIA	Columbia	1.06442767
13077	GEORGIA	Coweta	1.216582936
13113	GEORGIA	Fayette	1.184361377
13115	GEORGIA	Floyd	1.052352216
13143	GEORGIA	Haralson	1.187381625
13145	GEORGIA	Harris	1.273264522
13153	GEORGIA	Houston	1.138546264
13157	GEORGIA	Jackson	1.005550877
13169	GEORGIA	Jones	1.133606397
13207	GEORGIA	Monroe	1.161289086
13211	GEORGIA	Morgan	1.09446707
13231	GEORGIA	Pike	1.201306099
13233	GEORGIA	Polk	1.132572646
13297	GEORGIA	Walton	1.081235856
16017	IDAHO	Bonner	1.447634235

Appendix
The Impact of Social Vulnerability on COVID-19 in the U.S.:
An Analysis of Spatially Varying Relationships
Karaye and Horney

16055	IDAHO	Kootenai	1.439691601
16069	IDAHO	Nez Perce	1.204436489
19001	IOWA	Adair	1.538595524
19005	IOWA	Allamakee	1.199174946
19007	IOWA	Appanoose	1.066980259
19011	IOWA	Benton	1.20501002
19015	IOWA	Boone	1.589829423
19017	IOWA	Bremer	1.377223821
19023	IOWA	Butler	1.476692692
19027	IOWA	Carroll	1.746976777
19029	IOWA	Cass	1.614161233
19033	IOWA	Cerro Gordo	1.619263342
19035	IOWA	Cherokee	1.907854288
19037	IOWA	Chickasaw	1.410577821
19039	IOWA	Clarke	1.333417401
19041	IOWA	Clay	1.894488196
19043	IOWA	Clayton	1.157578446
19055	IOWA	Delaware	1.116464016
19061	IOWA	Dubuque	1.007640236
19065	IOWA	Fayette	1.277690728
19067	IOWA	Floyd	1.517257468
19069	IOWA	Franklin	1.576547034
19071	IOWA	Fremont	1.554752374
19073	IOWA	Greene	1.674002673
19075	IOWA	Grundy	1.423402089
19077	IOWA	Guthrie	1.62216238
19079	IOWA	Hamilton	1.609487472
19081	IOWA	Hancock	1.709610369
19083	IOWA	Hardin	1.515277304
19085	IOWA	Harrison	1.794757285
19089	IOWA	Howard	1.434106059
19091	IOWA	Humboldt	1.757310869
19095	IOWA	Iowa	1.123347333
19099	IOWA	Jasper	1.33451864
19105	IOWA	Jones	1.008421469
19107	IOWA	Keokuk	1.066230902
19109	IOWA	Kossuth	1.795874484
19121	IOWA	Madison	1.453841196
19123	IOWA	Mahaska	1.166501515
19125	IOWA	Marion	1.265806039
19129	IOWA	Mills	1.634052567
19131	IOWA	Mitchell	1.541388344
19133	IOWA	Monona	1.861589064
19135	IOWA	Monroe	1.140276533
19141	IOWA	O'Brien	1.920235832
19143	IOWA	Osceola	1.914201516

Appendix
The Impact of Social Vulnerability on COVID-19 in the U.S.:
An Analysis of Spatially Varying Relationships
Karaye and Horney

19145	IOWA	Page	1.49616176
19147	IOWA	Palo Alto	1.850020691
19149	IOWA	Plymouth	1.92269093
19151	IOWA	Pocahontas	1.821169872
19155	IOWA	Pottawattamie	1.697667895
19161	IOWA	Sac	1.831686215
19165	IOWA	Shelby	1.742475684
19171	IOWA	Tama	1.305567074
19173	IOWA	Taylor	1.427268345
19175	IOWA	Union	1.422389058
19179	IOWA	Wapello	1.04049165
19181	IOWA	Warren	1.362121219
19185	IOWA	Wayne	1.165651012
19187	IOWA	Webster	1.704080663
19189	IOWA	Winnebago	1.728945511
19195	IOWA	Worth	1.641133089
19197	IOWA	Wright	1.669399335
20013	KANSAS	Brown	1.251456803
20027	KANSAS	Clay	1.183028669
20041	KANSAS	Dickinson	1.025824311
20085	KANSAS	Jackson	1.125368387
20087	KANSAS	Jefferson	1.029414418
20131	KANSAS	Nemaha	1.273046112
22055	LOUISIANA	Lafayette	1.115275317
22063	LOUISIANA	Livingston	1.337961275
22093	LOUISIANA	St. James	1.283939193
22101	LOUISIANA	St. Mary	1.157897705
22103	LOUISIANA	St. Tammany	1.437454367
22105	LOUISIANA	Tangipahoa	1.401529362
22109	LOUISIANA	Terrebonne	1.20625914
22113	LOUISIANA	Vermilion	1.043808421
27003	MINNESOTA	Anoka	1.338056802
27015	MINNESOTA	Brown	1.783861634
27023	MINNESOTA	Chippewa	1.544134108
27025	MINNESOTA	Chisago	1.205473932
27033	MINNESOTA	Cottonwood	1.843828397
27041	MINNESOTA	Douglas	1.119268396
27043	MINNESOTA	Faribault	1.764387642
27045	MINNESOTA	Fillmore	1.388273633
27047	MINNESOTA	Freeborn	1.663293655
27049	MINNESOTA	Goodhue	1.474292801
27051	MINNESOTA	Grant	1.069920423
27055	MINNESOTA	Houston	1.237811888
27059	MINNESOTA	Isanti	1.235064628
27063	MINNESOTA	Jackson	1.882880378
27065	MINNESOTA	Kanabec	1.073373311

Appendix
The Impact of Social Vulnerability on COVID-19 in the U.S.:
An Analysis of Spatially Varying Relationships
Karaye and Horney

27067	MINNESOTA	Kandiyohi	1.509598387
27079	MINNESOTA	Le Sueur	1.658134189
27085	MINNESOTA	McLeod	1.60417239
27091	MINNESOTA	Martin	1.839274159
27093	MINNESOTA	Meeker	1.513619811
27097	MINNESOTA	Morrison	1.10198831
27121	MINNESOTA	Pope	1.297163908
27127	MINNESOTA	Redwood	1.761804301
27129	MINNESOTA	Renville	1.665910731
27133	MINNESOTA	Rock	1.869488085
27143	MINNESOTA	Sibley	1.670871194
27147	MINNESOTA	Steele	1.622800433
27151	MINNESOTA	Swift	1.424663413
27153	MINNESOTA	Todd	1.072393524
27157	MINNESOTA	Wabasha	1.383209184
27161	MINNESOTA	Waseca	1.685954089
27163	MINNESOTA	Washington	1.358107752
27173	MINNESOTA	Yellow Medicine	1.640229934
28045	MISSISSIPPI	Hancock	1.491002374
28057	MISSISSIPPI	Itawamba	1.194974117
28059	MISSISSIPPI	Jackson	1.573059824
28081	MISSISSIPPI	Lee	1.166968602
28089	MISSISSIPPI	Madison	1.468658251
28095	MISSISSIPPI	Monroe	1.333570923
28109	MISSISSIPPI	Pearl River	1.5123592
28121	MISSISSIPPI	Rankin	1.514715723
28129	MISSISSIPPI	Smith	1.570549237
28159	MISSISSIPPI	Winston	1.503336801
28161	MISSISSIPPI	Yalobusha	1.149096849
29003	MISSOURI	Andrew	1.216794265
29021	MISSOURI	Buchanan	1.112068247
29049	MISSOURI	Clinton	1.038467327
29061	MISSOURI	Daviess	1.080313321
29075	MISSOURI	Gentry	1.227735352
29081	MISSOURI	Harrison	1.19671796
29087	MISSOURI	Holt	1.304375333
29227	MISSOURI	Worth	1.307935547
31003	NEBRASKA	Antelope	1.820580718
31011	NEBRASKA	Boone	1.807184712
31021	NEBRASKA	Burt	1.852281557
31023	NEBRASKA	Butler	1.765434968
31025	NEBRASKA	Cass	1.650091073
31027	NEBRASKA	Cedar	1.87891823
31039	NEBRASKA	Cuming	1.868777661
31051	NEBRASKA	Dixon	1.902499468
31053	NEBRASKA	Dodge	1.821773727

Appendix
The Impact of Social Vulnerability on COVID-19 in the U.S.:
An Analysis of Spatially Varying Relationships
Karaye and Horney

31059	NEBRASKA	Fillmore	1.592261402
31067	NEBRASKA	Gage	1.484291721
31081	NEBRASKA	Hamilton	1.682787245
31089	NEBRASKA	Holt	1.726208532
31095	NEBRASKA	Jefferson	1.472381869
31107	NEBRASKA	Knox	1.815365186
31121	NEBRASKA	Merrick	1.742067845
31125	NEBRASKA	Nance	1.779360543
31127	NEBRASKA	Nemaha	1.469386595
31131	NEBRASKA	Otoe	1.575321245
31139	NEBRASKA	Pierce	1.856940735
31143	NEBRASKA	Polk	1.7553823
31155	NEBRASKA	Saunders	1.755385485
31167	NEBRASKA	Stanton	1.861969259
31177	NEBRASKA	Washington	1.796049621
31185	NEBRASKA	York	1.686506451
41061	OREGON	Union	1.02755094
45003	SOUTH CAROLINA	Aiken	1.060790754
45015	SOUTH CAROLINA	Berkeley	1.068758401
45035	SOUTH CAROLINA	Dorchester	1.061459697
45063	SOUTH CAROLINA	Lexington	1.03711346
46025	SOUTH DAKOTA	Clark	1.27765691
46029	SOUTH DAKOTA	Codington	1.346063569
46039	SOUTH DAKOTA	Deuel	1.529194311
46043	SOUTH DAKOTA	Douglas	1.622915998
46051	SOUTH DAKOTA	Grant	1.339882168
46059	SOUTH DAKOTA	Hand	1.075361703
46067	SOUTH DAKOTA	Hutchinson	1.742675535
46079	SOUTH DAKOTA	Lake	1.693930167
46097	SOUTH DAKOTA	Miner	1.605416198
46101	SOUTH DAKOTA	Moody	1.761138278
46111	SOUTH DAKOTA	Sanborn	1.502795428
46115	SOUTH DAKOTA	Spink	1.088693282
46125	SOUTH DAKOTA	Turner	1.83305522
53003	WASHINGTON	Asotin	1.250206453
53065	WASHINGTON	Stevens	1.618162534
55005	WISCONSIN	Barron	1.044700223
55011	WISCONSIN	Buffalo	1.256259048
55017	WISCONSIN	Chippewa	1.013516929
55023	WISCONSIN	Crawford	1.085998793
55035	WISCONSIN	Eau Claire	1.084467642
55043	WISCONSIN	Grant	1.010048189
55053	WISCONSIN	Jackson	1.020302983
55081	WISCONSIN	Monroe	1.002112788
55093	WISCONSIN	Pierce	1.351684829
55095	WISCONSIN	Polk	1.144335575

Appendix
The Impact of Social Vulnerability on COVID-19 in the U.S.:
An Analysis of Spatially Varying Relationships
Karaye and Horney

55109	WISCONSIN	St. Croix	1.27887745
55121	WISCONSIN	Trempealeau	1.165629842
55123	WISCONSIN	Vernon	1.068035132
01003	ALABAMA	Baldwin	1.60122253
01019	ALABAMA	Cherokee	1.116214262
01021	ALABAMA	Chilton	1.512936615
01027	ALABAMA	Clay	1.355380126
01041	ALABAMA	Crenshaw	1.484202555
01049	ALABAMA	DeKalb	1.021950728
01057	ALABAMA	Fayette	1.414034782
01061	ALABAMA	Geneva	1.390123808
01073	ALABAMA	Jefferson	1.421124402
01075	ALABAMA	Lamar	1.392172377
01081	ALABAMA	Lee	1.337188319
01093	ALABAMA	Marion	1.272658365
01109	ALABAMA	Pike	1.426908168
01123	ALABAMA	Tallapoosa	1.388277546
01125	ALABAMA	Tuscaloosa	1.516304664
05003	ARKANSAS	Ashley	1.115314433
05043	ARKANSAS	Drew	1.02621691
12005	FLORIDA	Bay	1.323892034
12037	FLORIDA	Franklin	1.182590418
12045	FLORIDA	Gulf	1.249690769
12073	FLORIDA	Leon	1.13103177
12091	FLORIDA	Okaloosa	1.493920162
12131	FLORIDA	Walton	1.427033516
13013	GEORGIA	Barrow	1.039672055
13035	GEORGIA	Butts	1.149618381
13067	GEORGIA	Cobb	1.099678756
13103	GEORGIA	Effingham	1.015406524
13131	GEORGIA	Grady	1.140728071
13133	GEORGIA	Greene	1.084451837
13149	GEORGIA	Heard	1.262286254
13159	GEORGIA	Jasper	1.130197345
13171	GEORGIA	Lamar	1.177742601
13177	GEORGIA	Lee	1.164786753
13181	GEORGIA	Lincoln	1.047448358
13185	GEORGIA	Lowndes	1.034308879
13195	GEORGIA	Madison	1.000470677
13201	GEORGIA	Miller	1.218378317
13219	GEORGIA	Oconee	1.060423699
13221	GEORGIA	Oglethorpe	1.045171888
13223	GEORGIA	Paulding	1.126578121
13237	GEORGIA	Putnam	1.110349077
13255	GEORGIA	Spalding	1.179909299
13275	GEORGIA	Thomas	1.103013394

Appendix
The Impact of Social Vulnerability on COVID-19 in the U.S.:
An Analysis of Spatially Varying Relationships
Karaye and Horney

13285	GEORGIA	Troup	1.273819109
13293	GEORGIA	Upson	1.200544916
13317	GEORGIA	Wilkes	1.05240457
19009	IOWA	Audubon	1.687831167
19013	IOWA	Black Hawk	1.328510588
19019	IOWA	Buchanan	1.223415459
19025	IOWA	Calhoun	1.770898768
19059	IOWA	Dickinson	1.897479522
19103	IOWA	Johnson	1.016661032
19113	IOWA	Linn	1.102282643
19119	IOWA	Lyon	1.905174684
19127	IOWA	Marshall	1.397609206
19137	IOWA	Montgomery	1.575321645
19153	IOWA	Polk	1.445532812
19157	IOWA	Poweshiek	1.22402891
19167	IOWA	Sioux	1.922403151
19191	IOWA	Winneshiek	1.315437142
19193	IOWA	Woodbury	1.901129071
20005	KANSAS	Atchison	1.124130132
20043	KANSAS	Doniphan	1.195334502
20149	KANSAS	Pottawatomie	1.148446197
22005	LOUISIANA	Ascension	1.286959492
22057	LOUISIANA	Lafourche	1.283606158
22073	LOUISIANA	Ouachita	1.154404339
22079	LOUISIANA	Rapides	1.096222212
22089	LOUISIANA	St. Charles	1.331265266
22099	LOUISIANA	St. Martin	1.17701427
22111	LOUISIANA	Union	1.069528519
22121	LOUISIANA	West Baton Rouge	1.254320917
22123	LOUISIANA	West Carroll	1.240994289
22125	LOUISIANA	West Feliciana	1.274303372
27009	MINNESOTA	Benton	1.240661395
27011	MINNESOTA	Big Stone	1.277155434
27013	MINNESOTA	Blue Earth	1.754464707
27019	MINNESOTA	Carver	1.559224658
27037	MINNESOTA	Dakota	1.488803045
27039	MINNESOTA	Dodge	1.550410017
27073	MINNESOTA	Lac qui Parle	1.502724156
27081	MINNESOTA	Lincoln	1.703151228
27083	MINNESOTA	Lyon	1.739311386
27095	MINNESOTA	Mille Lacs	1.105845158
27099	MINNESOTA	Mower	1.54156845
27101	MINNESOTA	Murray	1.837115247
27109	MINNESOTA	Olmsted	1.450527941
27117	MINNESOTA	Pipestone	1.805836588
27131	MINNESOTA	Rice	1.592858614

Appendix
The Impact of Social Vulnerability on COVID-19 in the U.S.:
An Analysis of Spatially Varying Relationships
Karaye and Horney

27139	MINNESOTA	Scott	1.570510276
27141	MINNESOTA	Sherburne	1.333533081
27145	MINNESOTA	Stearns	1.332506508
27149	MINNESOTA	Stevens	1.250422245
27155	MINNESOTA	Traverse	1.095134795
27165	MINNESOTA	Watonwan	1.818042702
27169	MINNESOTA	Winona	1.300725775
27171	MINNESOTA	Wright	1.457479511
28019	MISSISSIPPI	Choctaw	1.421911987
28037	MISSISSIPPI	Franklin	1.393503417
28067	MISSISSIPPI	Jones	1.59821276
28073	MISSISSIPPI	Lamar	1.551359412
28075	MISSISSIPPI	Lauderdale	1.618231673
28077	MISSISSIPPI	Lawrence	1.502512455
28085	MISSISSIPPI	Lincoln	1.45840216
28131	MISSISSIPPI	Stone	1.557478261
28149	MISSISSIPPI	Warren	1.387106972
28155	MISSISSIPPI	Webster	1.344342284
29005	MISSOURI	Atchison	1.43962903
29147	MISSOURI	Nodaway	1.345898416
29165	MISSOURI	Platte	1.015846045
31055	NEBRASKA	Douglas	1.744718669
31077	NEBRASKA	Greeley	1.771074297
31097	NEBRASKA	Johnson	1.504393729
31109	NEBRASKA	Lancaster	1.647507909
31119	NEBRASKA	Madison	1.846596251
31141	NEBRASKA	Platte	1.817162559
31151	NEBRASKA	Saline	1.585250858
31159	NEBRASKA	Seward	1.684167457
31179	NEBRASKA	Wayne	1.884179781
41063	OREGON	Wallowa	1.046295032
45017	SOUTH CAROLINA	Calhoun	1.056974174
45019	SOUTH CAROLINA	Charleston	1.055206262
45037	SOUTH CAROLINA	Edgefield	1.046923817
45041	SOUTH CAROLINA	Florence	1.023398942
45043	SOUTH CAROLINA	Georgetown	1.069970532
45051	SOUTH CAROLINA	Horry	1.026277497
46003	SOUTH DAKOTA	Aurora	1.490702083
46009	SOUTH DAKOTA	Bon Homme	1.778110589
46023	SOUTH DAKOTA	Charles Mix	1.622230033
46035	SOUTH DAKOTA	Davison	1.593379038
46037	SOUTH DAKOTA	Day	1.079321835
46057	SOUTH DAKOTA	Hamlin	1.469848353
46073	SOUTH DAKOTA	Jerauld	1.360146522
46087	SOUTH DAKOTA	McCook	1.738414309
46099	SOUTH DAKOTA	Minnehaha	1.819927649

Appendix
The Impact of Social Vulnerability on COVID-19 in the U.S.:
An Analysis of Spatially Varying Relationships
Karaye and Horney

46127	SOUTH DAKOTA	Union	1.91143575
46135	SOUTH DAKOTA	Yankton	1.838747406
53005	WASHINGTON	Benton	1.203808771
53043	WASHINGTON	Lincoln	1.553057466
53063	WASHINGTON	Spokane	1.557985387
53071	WASHINGTON	Walla Walla	1.324416207
55033	WISCONSIN	Dunn	1.184248102
55063	WISCONSIN	La Crosse	1.133234901
01007	ALABAMA	Bibb	1.539404539
01037	ALABAMA	Coosa	1.444479921
01053	ALABAMA	Escambia	1.580206351
01101	ALABAMA	Montgomery	1.470660631
01107	ALABAMA	Pickens	1.523525484
01127	ALABAMA	Walker	1.380641657
01129	ALABAMA	Washington	1.637320816
12065	FLORIDA	Jefferson	1.083406817
12129	FLORIDA	Wakulla	1.135925358
13007	GEORGIA	Baker	1.185289366
13023	GEORGIA	Bleckley	1.11002534
13031	GEORGIA	Bulloch	1.026618806
13053	GEORGIA	Chattahoochee	1.260384607
13075	GEORGIA	Cook	1.063417684
13079	GEORGIA	Crawford	1.170834855
13199	GEORGIA	Meriwether	1.234337061
13209	GEORGIA	Montgomery	1.0458019
13217	GEORGIA	Newton	1.117561535
13247	GEORGIA	Rockdale	1.117537722
13251	GEORGIA	Screven	1.046353783
13253	GEORGIA	Seminole	1.229845257
13263	GEORGIA	Talbot	1.22884845
13277	GEORGIA	Tift	1.085711971
13283	GEORGIA	Treutlen	1.059783012
13319	GEORGIA	Wilkinson	1.10822087
13321	GEORGIA	Worth	1.122787801
16057	IDAHO	Latah	1.312690866
19047	IOWA	Crawford	1.812031854
19049	IOWA	Dallas	1.538339802
19169	IOWA	Story	1.496524542
20061	KANSAS	Geary	1.043560598
20161	KANSAS	Riley	1.141684099
22001	LOUISIANA	Acadia	1.066353569
22003	LOUISIANA	Allen	1.014381103
22007	LOUISIANA	Assumption	1.231971978
22033	LOUISIANA	East Baton Rouge	1.294456362
22037	LOUISIANA	East Feliciana	1.329171029
22047	LOUISIANA	Iberville	1.227686107

Appendix
The Impact of Social Vulnerability on COVID-19 in the U.S.:
An Analysis of Spatially Varying Relationships
Karaye and Horney

22051	LOUISIANA	Jefferson	1.348801178
22059	LOUISIANA	LaSalle	1.182451596
22075	LOUISIANA	Plaquemines	1.376093191
22077	LOUISIANA	Pointe Coupee	1.232183565
22095	LOUISIANA	St. John the Baptist	1.341237058
22127	LOUISIANA	Winn	1.082576232
27053	MINNESOTA	Hennepin	1.46102803
27103	MINNESOTA	Nicollet	1.724125865
28005	MISSISSIPPI	Amite	1.391482373
28015	MISSISSIPPI	Carroll	1.314347462
28023	MISSISSIPPI	Clarke	1.63164786
28039	MISSISSIPPI	George	1.595380272
28043	MISSISSIPPI	Grenada	1.230183388
28071	MISSISSIPPI	Lafayette	1.053230522
28087	MISSISSIPPI	Lowndes	1.46305771
28091	MISSISSIPPI	Marion	1.520804067
28111	MISSISSIPPI	Perry	1.592567486
28117	MISSISSIPPI	Prentiss	1.037081413
28145	MISSISSIPPI	Union	1.052704936
28147	MISSISSIPPI	Walthall	1.482946229
29063	MISSOURI	DeKalb	1.129704523
30053	MONTANA	Lincoln	1.001185504
31153	NEBRASKA	Sarpy	1.700089994
41059	OREGON	Umatilla	1.127196902
45013	SOUTH CAROLINA	Beaufort	1.011590537
45029	SOUTH CAROLINA	Colleton	1.048617245
45081	SOUTH CAROLINA	Saluda	1.022069205
45085	SOUTH CAROLINA	Sumter	1.038980254
46011	SOUTH DAKOTA	Brookings	1.647277925
46083	SOUTH DAKOTA	Lincoln	1.881153579
46109	SOUTH DAKOTA	Roberts	1.089202063
53013	WASHINGTON	Columbia	1.346190307
53017	WASHINGTON	Douglas	1.298525831
53019	WASHINGTON	Ferry	1.566547874
53047	WASHINGTON	Okanogan	1.261741894
53051	WASHINGTON	Pend Oreille	1.58405366
01025	ALABAMA	Clarke	1.640521651
01029	ALABAMA	Cleburne	1.245475139
01059	ALABAMA	Franklin	1.145929251
01133	ALABAMA	Winston	1.26525306
12063	FLORIDA	Jackson	1.277232489
12133	FLORIDA	Washington	1.343470481
13001	GEORGIA	Appling	1.007066814
13009	GEORGIA	Baldwin	1.112983343
13027	GEORGIA	Brooks	1.065095559
13033	GEORGIA	Burke	1.066091895

Appendix
The Impact of Social Vulnerability on COVID-19 in the U.S.:
An Analysis of Spatially Varying Relationships
Karaye and Horney

13059	GEORGIA	Clarke	1.03977448
13087	GEORGIA	Decatur	1.186227488
13089	GEORGIA	DeKalb	1.110988382
13091	GEORGIA	Dodge	1.087375273
13097	GEORGIA	Douglas	1.165786002
13121	GEORGIA	Fulton	1.124662512
13125	GEORGIA	Glascocock	1.082262247
13151	GEORGIA	Henry	1.15133313
13155	GEORGIA	Irwin	1.069293544
13173	GEORGIA	Lanier	1.02493729
13175	GEORGIA	Laurens	1.083293654
13189	GEORGIA	McDuffie	1.070789029
13197	GEORGIA	Marion	1.227358092
13225	GEORGIA	Peach	1.155170169
13245	GEORGIA	Richmond	1.069076513
13249	GEORGIA	Schley	1.200943426
13279	GEORGIA	Toombs	1.031786443
13287	GEORGIA	Turner	1.106612066
13315	GEORGIA	Wilcox	1.099985271
19021	IOWA	Buena Vista	1.873728109
22009	LOUISIANA	Avoyelles	1.189420843
22021	LOUISIANA	Caldwell	1.186077908
22025	LOUISIANA	Catahoula	1.241933688
22043	LOUISIANA	Grant	1.101097148
22045	LOUISIANA	Iberia	1.136728565
22061	LOUISIANA	Lincoln	1.03746934
22067	LOUISIANA	Morehouse	1.178350256
22083	LOUISIANA	Richland	1.232298019
22087	LOUISIANA	St. Bernard	1.428052552
27105	MINNESOTA	Nobles	1.890676066
27123	MINNESOTA	Ramsey	1.400712703
28017	MISSISSIPPI	Chickasaw	1.281307851
28025	MISSISSIPPI	Clay	1.386269734
28035	MISSISSIPPI	Forrest	1.572521493
28047	MISSISSIPPI	Harrison	1.534490352
28049	MISSISSIPPI	Hinds	1.451390375
28061	MISSISSIPPI	Jasper	1.604177176
28101	MISSISSIPPI	Newton	1.587519352
28105	MISSISSIPPI	Oktibbeha	1.44005601
28127	MISSISSIPPI	Simpson	1.528728448
28153	MISSISSIPPI	Wayne	1.629467396
45079	SOUTH CAROLINA	Richland	1.02524599
46005	SOUTH DAKOTA	Beadle	1.320414407
46027	SOUTH DAKOTA	Clay	1.887596983
46085	SOUTH DAKOTA	Lyman	1.125667594
53075	WASHINGTON	Whitman	1.463310369

Appendix
The Impact of Social Vulnerability on COVID-19 in the U.S.:
An Analysis of Spatially Varying Relationships
Karaye and Horney

01023	ALABAMA	Choctaw	1.645688648
01035	ALABAMA	Conecuh	1.571831487
01091	ALABAMA	Marengo	1.636080057
01099	ALABAMA	Monroe	1.611753558
05041	ARKANSAS	Desha	1.016766494
13005	GEORGIA	Bacon	1.00524347
13017	GEORGIA	Ben Hill	1.071819739
13021	GEORGIA	Bibb	1.145996314
13069	GEORGIA	Coffee	1.032071384
13081	GEORGIA	Crisp	1.129810523
13107	GEORGIA	Emanuel	1.057470443
13135	GEORGIA	Gwinnett	1.062162654
13165	GEORGIA	Jenkins	1.055872827
13167	GEORGIA	Johnson	1.077323482
13235	GEORGIA	Pulaski	1.1148292
13269	GEORGIA	Taylor	1.197501191
13289	GEORGIA	Twiggs	1.123516095
13307	GEORGIA	Webster	1.224023933
22049	LOUISIANA	Jackson	1.084078043
22071	LOUISIANA	Orleans	1.40532696
22091	LOUISIANA	St. Helena	1.376574582
28007	MISSISSIPPI	Attala	1.445855798
28029	MISSISSIPPI	Copiah	1.464195013
28031	MISSISSIPPI	Covington	1.565005732
28041	MISSISSIPPI	Greene	1.616367859
28065	MISSISSIPPI	Jefferson Davis	1.53578174
28097	MISSISSIPPI	Montgomery	1.338743486
28099	MISSISSIPPI	Neshoba	1.552175989
28113	MISSISSIPPI	Pike	1.447041704
28115	MISSISSIPPI	Pontotoc	1.157933082
31037	NEBRASKA	Colfax	1.824668161
45027	SOUTH CAROLINA	Clarendon	1.058928979
45049	SOUTH CAROLINA	Hampton	1.042478173
45065	SOUTH CAROLINA	McCormick	1.034689095
53025	WASHINGTON	Grant	1.341192805
01065	ALABAMA	Hale	1.596994513
12013	FLORIDA	Calhoun	1.260490447
12077	FLORIDA	Liberty	1.206995371
12079	FLORIDA	Madison	1.037076606
12123	FLORIDA	Taylor	1.032395972
13019	GEORGIA	Berrien	1.05008776
13063	GEORGIA	Clayton	1.156499717
13095	GEORGIA	Dougherty	1.164413589
13099	GEORGIA	Early	1.249616065
13109	GEORGIA	Evans	1.014460646
13215	GEORGIA	Muscogee	1.272561282

Appendix
The Impact of Social Vulnerability on COVID-19 in the U.S.:
An Analysis of Spatially Varying Relationships
Karaye and Horney

13261	GEORGIA	Sumter	1.181027194
13267	GEORGIA	Tattnall	1.014016637
13301	GEORGIA	Warren	1.078916709
13303	GEORGIA	Washington	1.090250747
28013	MISSISSIPPI	Calhoun	1.230007918
31043	NEBRASKA	Dakota	1.907170883
45009	SOUTH CAROLINA	Bamberg	1.061765365
45053	SOUTH CAROLINA	Jasper	1.016932343
45075	SOUTH CAROLINA	Orangeburg	1.064072337
45089	SOUTH CAROLINA	Williamsburg	1.061253347
01047	ALABAMA	Dallas	1.587610326
01087	ALABAMA	Macon	1.391032239
01119	ALABAMA	Sumter	1.620076907
05017	ARKANSAS	Chicot	1.171941868
13043	GEORGIA	Candler	1.037935642
13061	GEORGIA	Clay	1.271250701
13161	GEORGIA	Jeff Davis	1.030967674
13163	GEORGIA	Jefferson	1.076335421
13205	GEORGIA	Mitchell	1.149657092
13243	GEORGIA	Randolph	1.243276241
13271	GEORGIA	Telfair	1.058394999
13273	GEORGIA	Terrell	1.201152713
22029	LOUISIANA	Concordia	1.272082085
22041	LOUISIANA	Franklin	1.266385468
22097	LOUISIANA	St. Landry	1.157463468
22107	LOUISIANA	Tensas	1.328543553
22117	LOUISIANA	Washington	1.468289254
28069	MISSISSIPPI	Kemper	1.585425421
28125	MISSISSIPPI	Sharkey	1.326568731
28151	MISSISSIPPI	Washington	1.219173964
31173	NEBRASKA	Thurston	1.890892825
45011	SOUTH CAROLINA	Barnwell	1.062796161
45061	SOUTH CAROLINA	Lee	1.007551366
53021	WASHINGTON	Franklin	1.355105489
01011	ALABAMA	Bullock	1.395130732
01131	ALABAMA	Wilcox	1.611534063
12039	FLORIDA	Gadsden	1.179940666
12059	FLORIDA	Holmes	1.377490695
13003	GEORGIA	Atkinson	1.021549378
13071	GEORGIA	Colquitt	1.099195898
13093	GEORGIA	Dooly	1.142029036
13141	GEORGIA	Hancock	1.096106898
13309	GEORGIA	Wheeler	1.053777579
22039	LOUISIANA	Evangeline	1.098056519
28001	MISSISSIPPI	Adams	1.321685694
28011	MISSISSIPPI	Bolivar	1.079303057

Appendix
The Impact of Social Vulnerability on COVID-19 in the U.S.:
An Analysis of Spatially Varying Relationships
Karaye and Horney

28063	MISSISSIPPI	Jefferson	1.378346238
28079	MISSISSIPPI	Leake	1.511627858
28083	MISSISSIPPI	Leflore	1.235314956
45067	SOUTH CAROLINA	Marion	1.010748292
01005	ALABAMA	Barbour	1.340872599
01063	ALABAMA	Greene	1.594109242
01105	ALABAMA	Perry	1.587561513
13193	GEORGIA	Macon	1.172263186
13239	GEORGIA	Quitman	1.283918046
13259	GEORGIA	Stewart	1.262749716
22035	LOUISIANA	East Carroll	1.284711474
28051	MISSISSIPPI	Holmes	1.374053765
28053	MISSISSIPPI	Humphreys	1.317319648
28103	MISSISSIPPI	Noxubee	1.534855678
28133	MISSISSIPPI	Sunflower	1.181739865
28163	MISSISSIPPI	Yazoo	1.401240907
46017	SOUTH DAKOTA	Buffalo	1.212464634
53001	WASHINGTON	Adams	1.470037384
01085	ALABAMA	Lowndes	1.535488651
13037	GEORGIA	Calhoun	1.217047701
13265	GEORGIA	Taliaferro	1.075439007
22065	LOUISIANA	Madison	1.326148819
28123	MISSISSIPPI	Scott	1.548698194
28135	MISSISSIPPI	Tallahatchie	1.117204286
28157	MISSISSIPPI	Wilkinson	1.312315005
46121	SOUTH DAKOTA	Todd	1.248376092
28021	MISSISSIPPI	Claiborne	1.396463381
45005	SOUTH CAROLINA	Allendale	1.055127521

Appendix
The Impact of Social Vulnerability on COVID-19 in the U.S.:
An Analysis of Spatially Varying Relationships
Karaye and Horney

Appendix Table 3. U.S. States and Counties at Increased Risk of COVID-19 Due to Household Composition and Disability Vulnerability ($\beta \geq 1.00$; $n=40$)

FIPS	COUNTY	STATE	Coef (β)
26007	Alpena	MICHIGAN	1.159665812
26029	Charlevoix	MICHIGAN	1.183167303
26041	Delta	MICHIGAN	1.262243757
26043	Dickinson	MICHIGAN	1.243831823
26047	Emmet	MICHIGAN	1.310535675
26061	Houghton	MICHIGAN	1.461350274
26103	Marquette	MICHIGAN	1.386158628
26109	Menominee	MICHIGAN	1.100379812
26137	Otsego	MICHIGAN	1.094435401
30009	Carbon	MONTANA	1.237988403
30111	Yellowstone	MONTANA	1.056205468
55003	Ashland	WISCONSIN	1.132767638
55041	Forest	WISCONSIN	1.100539105
55075	Marinette	WISCONSIN	1.009727714
56003	Big Horn	WYOMING	1.757147195
56011	Crook	WYOMING	1.241708953
56029	Park	WYOMING	1.29840092
56033	Sheridan	WYOMING	1.790339604
26009	Antrim	MICHIGAN	1.036312841
26013	Baraga	MICHIGAN	1.41976337
26031	Cheboygan	MICHIGAN	1.318828092
26141	Presque Isle	MICHIGAN	1.316048921
27075	Lake	MINNESOTA	1.267123751
41003	Benton	OREGON	1.062039751
41041	Lincoln	OREGON	1.093784444
55007	Bayfield	WISCONSIN	1.086754271
55037	Florence	WISCONSIN	1.172403532
55051	Iron	WISCONSIN	1.184680301
55085	Oneida	WISCONSIN	1.084049259
55125	Vilas	WISCONSIN	1.194714823
12087	Monroe	FLORIDA	1.170251058
26033	Chippewa	MICHIGAN	1.684046314
26095	Luce	MICHIGAN	1.597985975
26153	Schoolcraft	MICHIGAN	1.426844887
56039	Teton	WYOMING	1.043466129
26053	Gogebic	MICHIGAN	1.283047048
26097	Mackinac	MICHIGAN	1.524446856
26119	Montmorency	MICHIGAN	1.132119626
12021	Collier	FLORIDA	1.020032541
30003	Big Horn	MONTANA	1.556351458

Appendix
The Impact of Social Vulnerability on COVID-19 in the U.S.:
An Analysis of Spatially Varying Relationships
Karaye and Horney

Appendix Table 4. U.S. States and Counties at Increased Risk of COVID-19 Due to Minority Status and Language Vulnerability ($\beta \geq 3.00$; n=196)

FIPS	COUNTY	STATE	Coef (β)
09005	Litchfield	CONNECTICUT	3.029321
09007	Middlesex	CONNECTICUT	3.006269
09011	New London	CONNECTICUT	3.051864
09015	Windham	CONNECTICUT	3.141963
16001	Ada	IDAHO	3.282025
16017	Bonner	IDAHO	3.531066
16025	Camas	IDAHO	3.143297
16039	Elmore	IDAHO	3.184827
16045	Gem	IDAHO	3.345869
16055	Kootenai	IDAHO	3.460972
16069	Nez Perce	IDAHO	3.378322
16085	Valley	IDAHO	3.187535
23001	Androscoggin	MAINE	3.11899
23005	Cumberland	MAINE	3.21832
23017	Oxford	MAINE	3.145324
23023	Sagadahoc	MAINE	3.099671
23031	York	MAINE	3.303191
25003	Berkshire	MASSACHUSETTS	3.165648
25011	Franklin	MASSACHUSETTS	3.248792
25023	Plymouth	MASSACHUSETTS	3.257308
27017	Carlton	MINNESOTA	3.077544
27137	St. Louis	MINNESOTA	3.14448
33001	Belknap	NEW HAMPSHIRE	3.345416
33005	Cheshire	NEW HAMPSHIRE	3.316837
33007	Coos	NEW HAMPSHIRE	3.200286
33009	Grafton	NEW HAMPSHIRE	3.350323
33013	Merrimack	NEW HAMPSHIRE	3.352181
33015	Rockingham	NEW HAMPSHIRE	3.336507
33017	Strafford	NEW HAMPSHIRE	3.333576
33019	Sullivan	NEW HAMPSHIRE	3.358129
36017	Chenango	NEW YORK	3.101884
36021	Columbia	NEW YORK	3.112461
36023	Cortland	NEW YORK	3.114757
36025	Delaware	NEW YORK	3.051657
36031	Essex	NEW YORK	3.389541
36035	Fulton	NEW YORK	3.250478
36037	Genesee	NEW YORK	3.039031
36039	Greene	NEW YORK	3.093767
36045	Jefferson	NEW YORK	3.317871
36049	Lewis	NEW YORK	3.310929
36053	Madison	NEW YORK	3.176846
36069	Ontario	NEW YORK	3.115783
36073	Orleans	NEW YORK	3.046911

Appendix
The Impact of Social Vulnerability on COVID-19 in the U.S.:
An Analysis of Spatially Varying Relationships
Karaye and Horney

36075	Oswego	NEW YORK	3.240922
36083	Rensselaer	NEW YORK	3.218273
36091	Saratoga	NEW YORK	3.273071
36095	Schoharie	NEW YORK	3.148252
36097	Schuyler	NEW YORK	3.070995
36101	Steuben	NEW YORK	3.039523
36107	Tioga	NEW YORK	3.041457
36111	Ulster	NEW YORK	3.000501
36113	Warren	NEW YORK	3.339754
36115	Washington	NEW YORK	3.323062
36117	Wayne	NEW YORK	3.16624
36121	Wyoming	NEW YORK	3.01341
41007	Clatsop	OREGON	3.873898
41009	Columbia	OREGON	3.945
41017	Deschutes	OREGON	3.699644
41043	Linn	OREGON	3.768846
41053	Polk	OREGON	3.757706
41061	Union	OREGON	3.652336
41065	Wasco	OREGON	3.982226
41071	Yamhill	OREGON	3.834996
44001	Bristol	RHODE ISLAND	3.182138
44005	Newport	RHODE ISLAND	3.153874
44009	Washington	RHODE ISLAND	3.095869
50003	Bennington	VERMONT	3.297247
50005	Caledonia	VERMONT	3.332272
50011	Franklin	VERMONT	3.35479
50013	Grand Isle	VERMONT	3.38001
50015	Lamoille	VERMONT	3.359241
50017	Orange	VERMONT	3.374155
50019	Orleans	VERMONT	3.300822
50023	Washington	VERMONT	3.376195
50025	Windham	VERMONT	3.308445
50027	Windsor	VERMONT	3.369139
53003	Asotin	WASHINGTON	3.483728
53011	Clark	WASHINGTON	3.991207
53015	Cowlitz	WASHINGTON	4.004616
53027	Grays Harbor	WASHINGTON	3.985013
53029	Island	WASHINGTON	4.435779
53035	Kitsap	WASHINGTON	4.247453
53037	Kittitas	WASHINGTON	4.169726
53041	Lewis	WASHINGTON	4.067256
53045	Mason	WASHINGTON	4.116006
53059	Skamania	WASHINGTON	4.041214
53065	Stevens	WASHINGTON	3.932658
53067	Thurston	WASHINGTON	4.077067
55003	Ashland	WISCONSIN	3.038102

Appendix
The Impact of Social Vulnerability on COVID-19 in the U.S.:
An Analysis of Spatially Varying Relationships
Karaye and Horney

55031	Douglas	WISCONSIN	3.113383
09013	Tolland	CONNECTICUT	3.11665
16011	Bingham	IDAHO	3.108713
16013	Blaine	IDAHO	3.112858
16027	Canyon	IDAHO	3.368905
16051	Jefferson	IDAHO	3.005703
16083	Twin Falls	IDAHO	3.118612
16087	Washington	IDAHO	3.422401
23015	Lincoln	MAINE	3.003229
25001	Barnstable	MASSACHUSETTS	3.257152
25005	Bristol	MASSACHUSETTS	3.210286
25015	Hampshire	MASSACHUSETTS	3.197163
25021	Norfolk	MASSACHUSETTS	3.262989
25027	Worcester	MASSACHUSETTS	3.251266
27075	Lake	MINNESOTA	3.170907
33003	Carroll	NEW HAMPSHIRE	3.309705
33011	Hillsborough	NEW HAMPSHIRE	3.330225
36007	Broome	NEW YORK	3.039129
36011	Cayuga	NEW YORK	3.15508
36015	Chemung	NEW YORK	3.035862
36019	Clinton	NEW YORK	3.393339
36033	Franklin	NEW YORK	3.397954
36043	Herkimer	NEW YORK	3.280061
36051	Livingston	NEW YORK	3.066792
36055	Monroe	NEW YORK	3.113252
36057	Montgomery	NEW YORK	3.211026
36065	Oneida	NEW YORK	3.238168
36077	Otsego	NEW YORK	3.139629
36089	St. Lawrence	NEW YORK	3.379309
36093	Schenectady	NEW YORK	3.211127
36099	Seneca	NEW YORK	3.127637
36123	Yates	NEW YORK	3.096899
41001	Baker	OREGON	3.590405
41003	Benton	OREGON	3.630201
41005	Clackamas	OREGON	3.947151
41013	Crook	OREGON	3.817072
41025	Harney	OREGON	3.409169
41027	Hood River	OREGON	4.005742
41031	Jefferson	OREGON	3.913639
41039	Lane	OREGON	3.470382
41041	Lincoln	OREGON	3.605629
41057	Tillamook	OREGON	3.808059
41063	Wallowa	OREGON	3.483046
41067	Washington	OREGON	3.902139
44003	Kent	RHODE ISLAND	3.14403
50001	Addison	VERMONT	3.388524

Appendix
The Impact of Social Vulnerability on COVID-19 in the U.S.:
An Analysis of Spatially Varying Relationships
Karaye and Horney

50007	Chittenden	VERMONT	3.385995
50009	Essex	VERMONT	3.256553
50021	Rutland	VERMONT	3.363778
53005	Benton	WASHINGTON	3.924677
53007	Chelan	WASHINGTON	4.350801
53009	Clallam	WASHINGTON	4.186464
53031	Jefferson	WASHINGTON	4.154298
53039	Klickitat	WASHINGTON	4.024798
53043	Lincoln	WASHINGTON	3.907448
53053	Pierce	WASHINGTON	4.154722
53055	San Juan	WASHINGTON	4.54052
53061	Snohomish	WASHINGTON	4.446423
53063	Spokane	WASHINGTON	3.654178
53071	Walla Walla	WASHINGTON	3.75328
53073	Whatcom	WASHINGTON	4.722452
55007	Bayfield	WISCONSIN	3.112863
55113	Sawyer	WISCONSIN	3.027037
55129	Washburn	WISCONSIN	3.032876
16037	Custer	IDAHO	3.062925
16049	Idaho	IDAHO	3.087148
16057	Latah	IDAHO	3.382247
16067	Minidoka	IDAHO	3.157513
16075	Payette	IDAHO	3.406743
25017	Middlesex	MASSACHUSETTS	3.296613
30053	Lincoln	MONTANA	3.193169
36001	Albany	NEW YORK	3.170999
36041	Hamilton	NEW YORK	3.329861
36067	Onondaga	NEW YORK	3.179339
41023	Grant	OREGON	3.783268
41047	Marion	OREGON	3.868354
41055	Sherman	OREGON	3.987175
41059	Umatilla	OREGON	3.781555
53013	Columbia	WASHINGTON	3.642326
53017	Douglas	WASHINGTON	4.199866
53019	Ferry	WASHINGTON	4.133581
53047	Okanogan	WASHINGTON	4.437281
53049	Pacific	WASHINGTON	3.91348
53051	Pend Oreille	WASHINGTON	3.786378
53057	Skagit	WASHINGTON	4.596316
53069	Wahkiakum	WASHINGTON	3.928596
09003	Hartford	CONNECTICUT	3.071101
16003	Adams	IDAHO	3.350988
16047	Gooding	IDAHO	3.13071
16063	Lincoln	IDAHO	3.13669
25009	Essex	MASSACHUSETTS	3.322926
36109	Tompkins	NEW YORK	3.086281

Appendix
The Impact of Social Vulnerability on COVID-19 in the U.S.:
An Analysis of Spatially Varying Relationships
Karaye and Horney

41051	Multnomah	OREGON	3.969712
44007	Providence	RHODE ISLAND	3.187234
53033	King	WASHINGTON	4.275399
53075	Whitman	WASHINGTON	3.595058
16053	Jerome	IDAHO	3.145065
16073	Owyhee	IDAHO	3.116984
25013	Hampden	MASSACHUSETTS	3.15562
25025	Suffolk	MASSACHUSETTS	3.292088
41045	Malheur	OREGON	3.401548
53025	Grant	WASHINGTON	4.043056
41049	Morrow	OREGON	3.900651
53021	Franklin	WASHINGTON	3.852122
53077	Yakima	WASHINGTON	4.068532
53001	Adams	WASHINGTON	3.840345
48427	Starr	TEXAS	3.010449

Appendix
The Impact of Social Vulnerability on COVID-19 in the U.S.:
An Analysis of Spatially Varying Relationships
Karaye and Horney

Appendix Table 5. U.S. States and Counties at Increased Risk of COVID-19 Due to Housing and Transportation Vulnerability ($\beta \geq 1.00$; $n=46$)

FIPS	COUNTY	STATE	Coef (β)
27061	Itasca	MINNESOTA	1.080398
27071	Koochiching	MINNESOTA	1.1356
27137	St. Louis	MINNESOTA	1.313956
30009	Carbon	MONTANA	1.267295
30031	Gallatin	MONTANA	1.06413
30067	Park	MONTANA	1.191736
30095	Stillwater	MONTANA	1.224458
30107	Wheatland	MONTANA	1.07198
30111	Yellowstone	MONTANA	1.112
56003	Big Horn	WYOMING	1.157578
56029	Park	WYOMING	1.359107
04025	Yavapai	ARIZONA	1.526156
12015	Charlotte	FLORIDA	1.057988
12111	St. Lucie	FLORIDA	1.014196
16043	Fremont	IDAHO	1.106169
16081	Teton	IDAHO	1.169361
27075	Lake	MINNESOTA	1.34628
30037	Golden Valley	MONTANA	1.101699
30065	Musselshell	MONTANA	1.042514
41015	Curry	OREGON	1.04561
04005	Coconino	ARIZONA	1.279021
04011	Greenlee	ARIZONA	1.196607
06015	Del Norte	CALIFORNIA	1.010874
12085	Martin	FLORIDA	1.090894
12087	Monroe	FLORIDA	1.280673
12099	Palm Beach	FLORIDA	1.177076
35017	Grant	NEW MEXICO	1.055511
41033	Josephine	OREGON	1.000267
56039	Teton	WYOMING	1.302284
04007	Gila	ARIZONA	1.342171
04013	Maricopa	ARIZONA	1.208245
04015	Mohave	ARIZONA	1.131935
12011	Broward	FLORIDA	1.247396
12071	Lee	FLORIDA	1.133398
35003	Catron	NEW MEXICO	1.317554
12021	Collier	FLORIDA	1.226347
04009	Graham	ARIZONA	1.053259
04012	La Paz	ARIZONA	1.307967
16065	Madison	IDAHO	1.041881
04017	Navajo	ARIZONA	1.48547
12043	Glades	FLORIDA	1.085631
30003	Big Horn	MONTANA	1.029497
04001	Apache	ARIZONA	1.465417

Appendix
The Impact of Social Vulnerability on COVID-19 in the U.S.:
An Analysis of Spatially Varying Relationships
Karaye and Horney

35006	Cibola	NEW MEXICO	1.273055
12051	Hendry	FLORIDA	1.165823
35031	McKinley	NEW MEXICO	1.233853