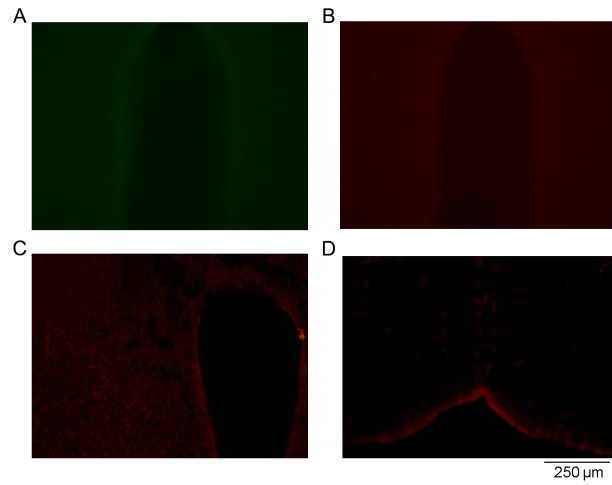
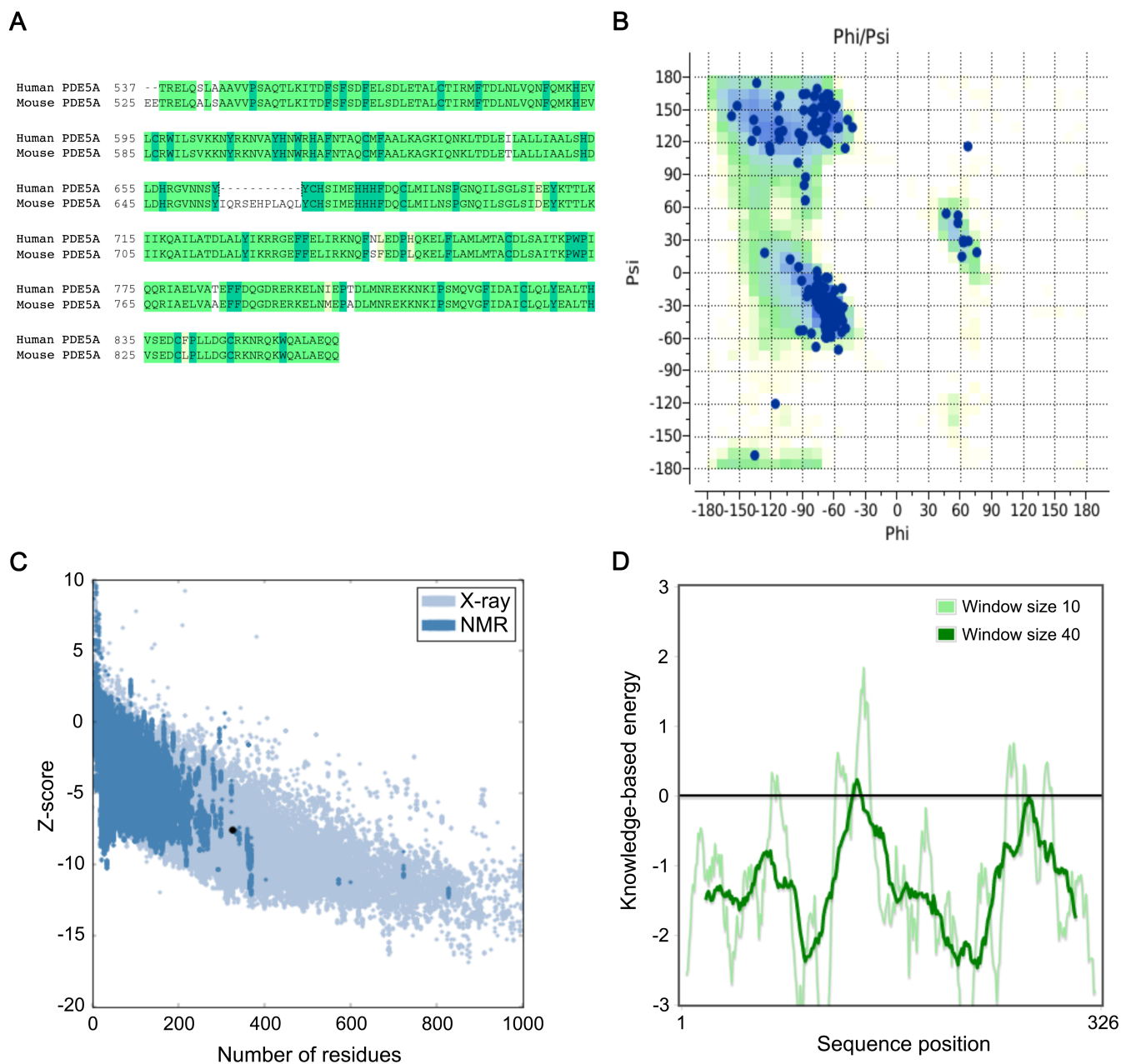


## SI Appendix



**Figure S1:** Hippocampus sections without primary anti-PDE5A (A) or anti-DBH antibodies (B). Sections of the paraventricular hypothalamic nucleus (C) or raphe pallidus (D) following inoculation of PRV152 on the bone surface.



**Figure S2:** (A) Sequence alignment of mouse PDE5A (UniProt id Q8CG03) with the human sequence extracted from 1UDU and 1UHO structures. In these two structures, atomistic coordinates are not available for the disordered region at residues 665–675. Conserved residues are in dark (>80% conservation) and light (>50% conservation) green. Conservative replacements are in yellow. (B) Ramachandran plot highlighting the Phi and Psi angles of residues. (C) Z-score plot representing how close the quality of the MODELLER-program-built model is to that of the proteins of the same length generated experimentally. (D) Energy plot highlighting the local energies against residue positions.