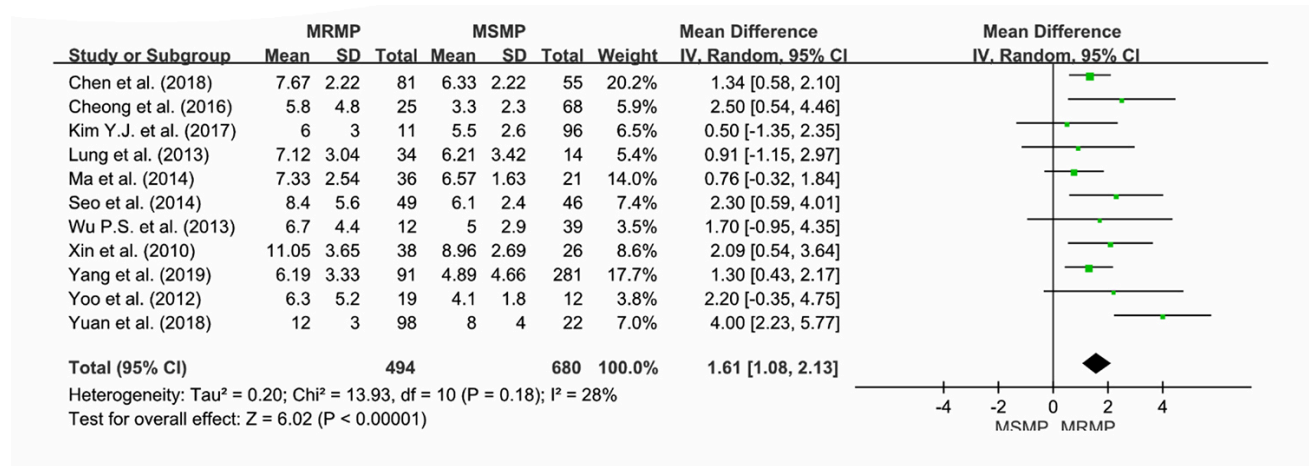


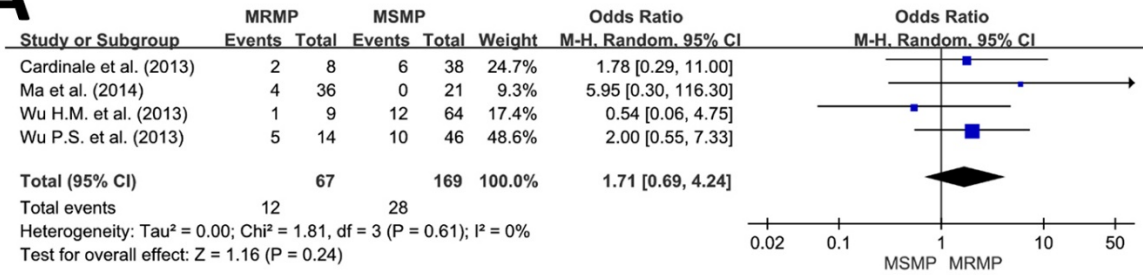
Macrolide-Resistant *Mycoplasma pneumoniae* Infections in Pediatric Community-Acquired Pneumonia

Appendix

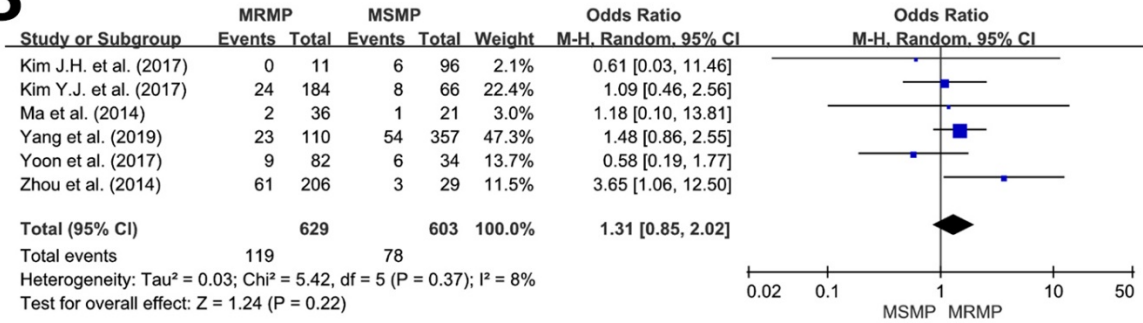


Appendix Figure 1. Forest plots depicting the difference in length of hospital stay (days) between macrolide-resistant *Mycoplasma pneumoniae* (MRMP) and macrolide-sensitive *Mycoplasma pneumoniae* (MSMP).

A

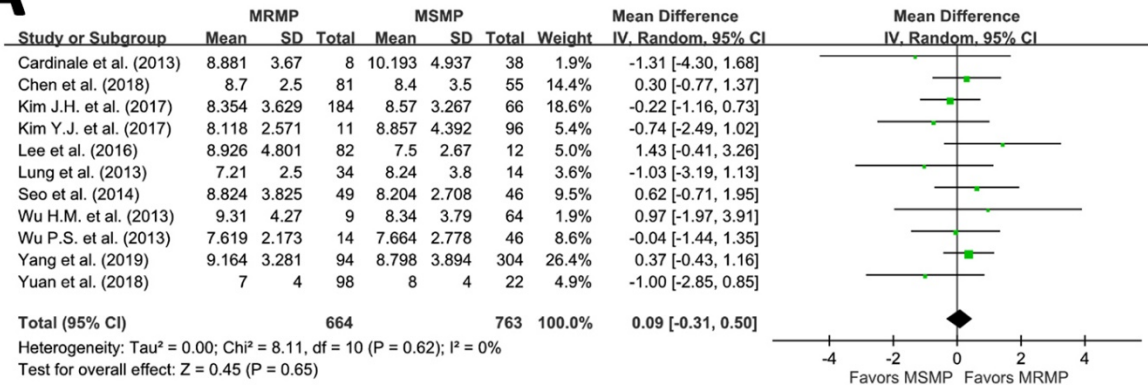


B

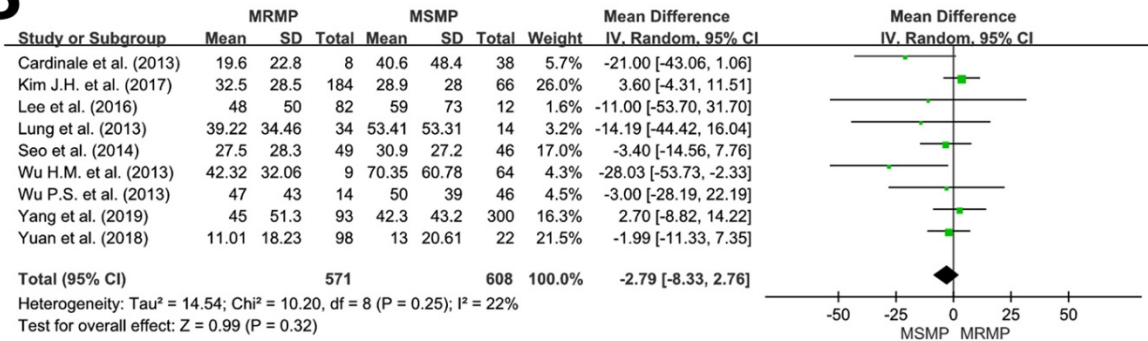


Appendix Figure 2. Forest plots comparing the clinical manifestations: A) dyspnea; B) extrapulmonary symptoms.

A

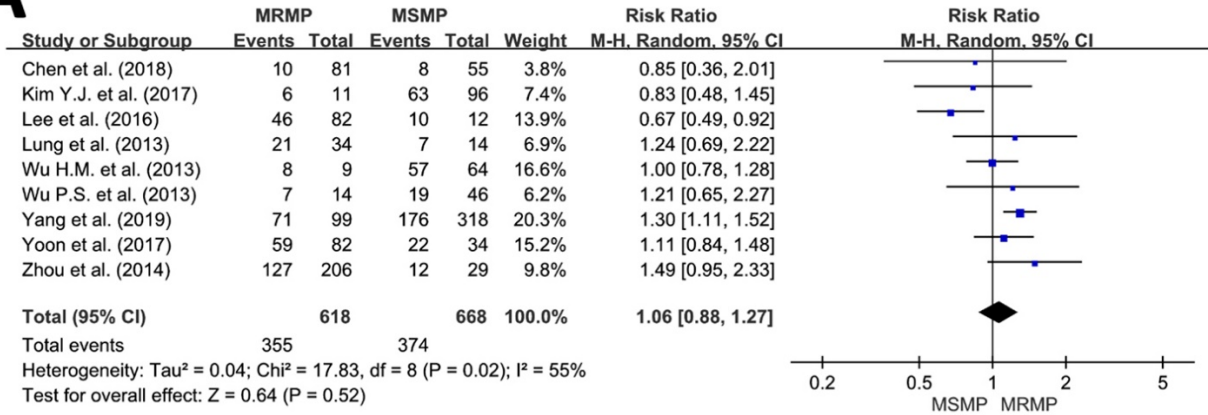


B

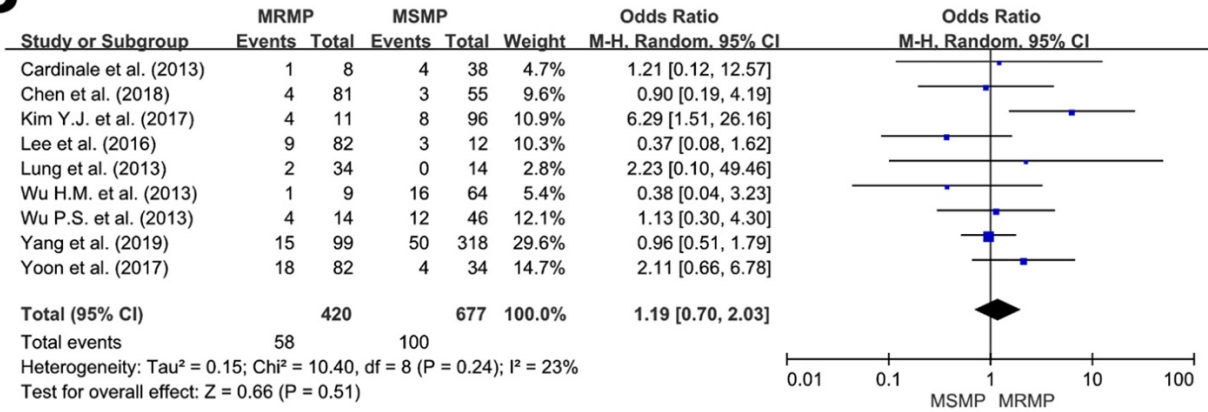


Appendix Figure 3. Forest plots of laboratory differences between macrolide-resistant *Mycoplasma pneumoniae* (MRMP) and macrolide-sensitive *Mycoplasma pneumoniae* (MSMP): A) leukocyte count ($\times 10^3$); B) C-reactive protein (mg/L).

A



B



Appendix Figure 4. Forest plots illustrating the chest radiographic findings in *M. pneumoniae* infections:

A) consolidation; B) pleural effusion.