

Original Gel Images

Title:

Evaluation and improvement of isothermal amplification for point-of-need plant disease diagnostics

Authors:

Yiping Zou, Michael Glenn Mason, Jose Ramon Botella

Author Affiliations:

School of Agriculture and Food Sciences, The University of Queensland, Brisbane, QLD, Australia

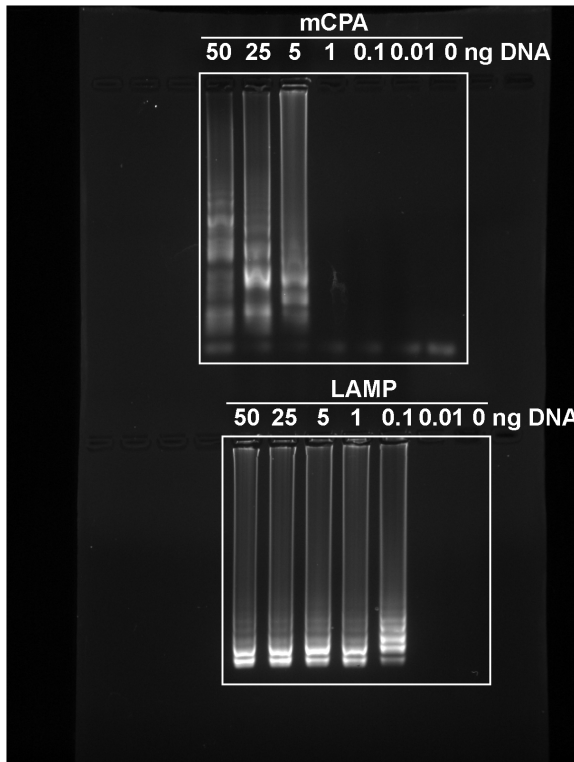
Corresponding authors:

Email: j.botella@uq.edu.au (JB) and michael.mason@uq.edu.au (MM)

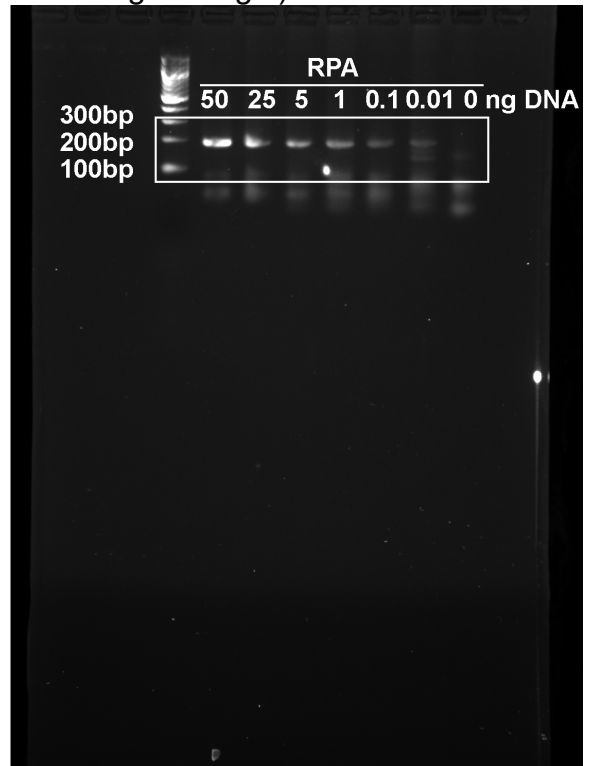
Unless otherwise stated, original gel images were obtained by analysing amplification products on the 1% agarose gel containing 0.001% Ethidium Bromide Dye with the aid of BIO-RAD GelDoc. Original images used to generate final figures in main text and supporting information were included in this file and annotated using Adobe Illustrator with lanes not included in final figures labelled by "X".

Fig 1

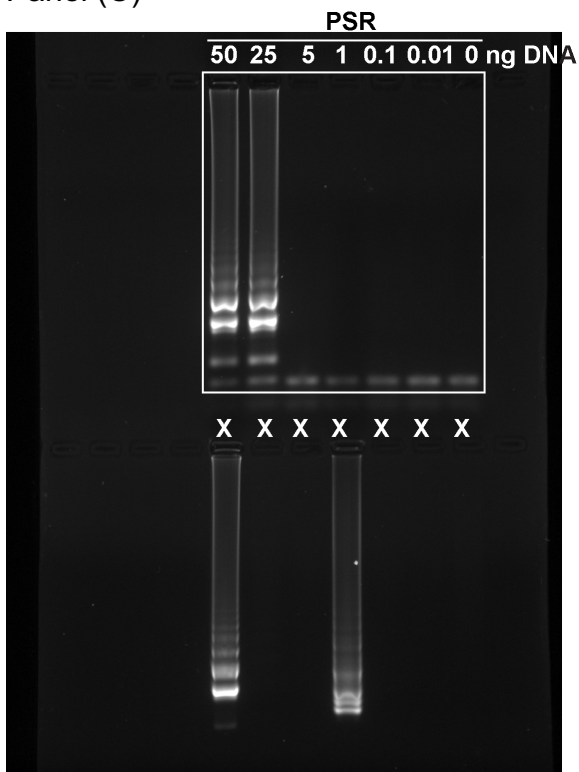
Panel (A) and (D)



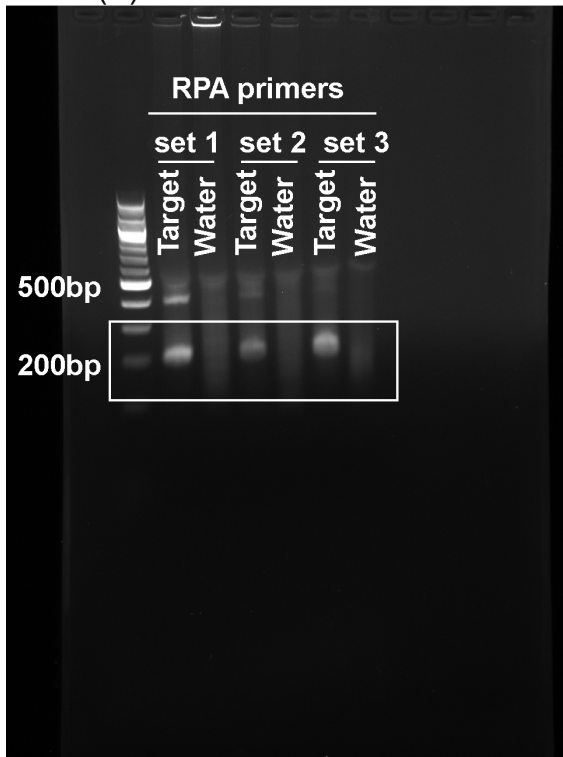
Panel (B) (RPA products were analysed on 2% agarose gel)



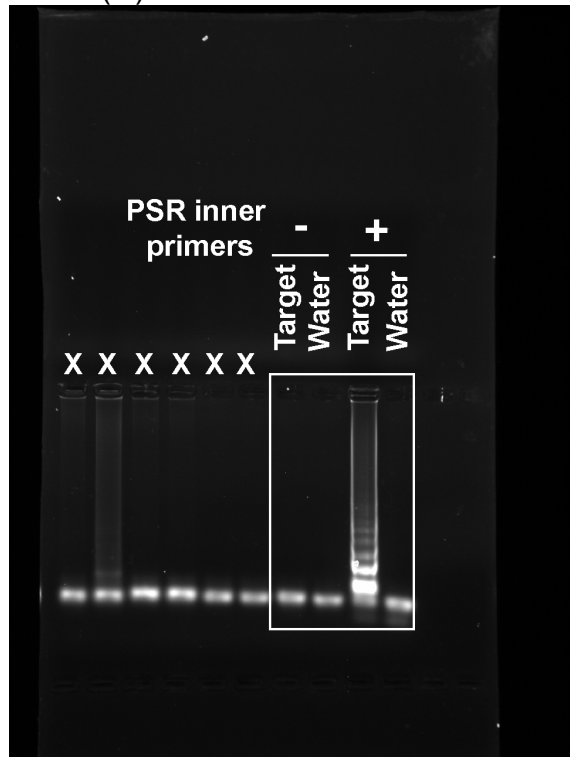
Panel (C)



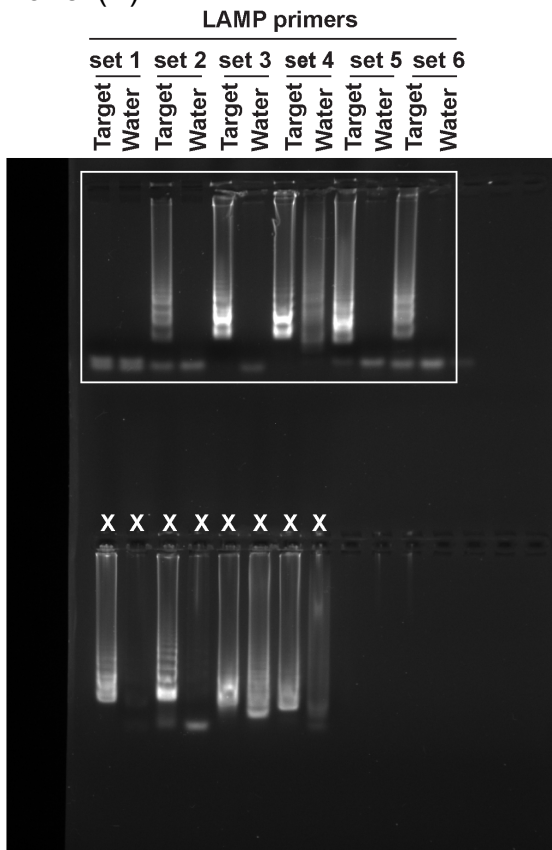
S2 Fig
Panel (A)



Panel (C)

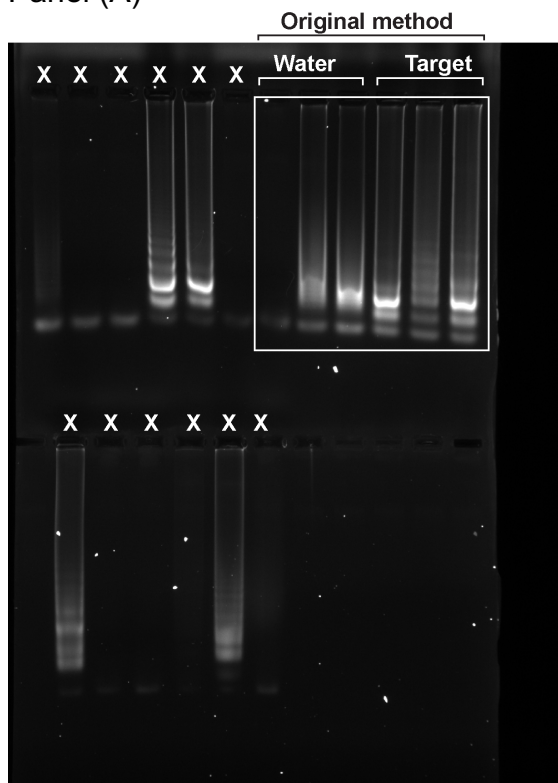


Panel (B)

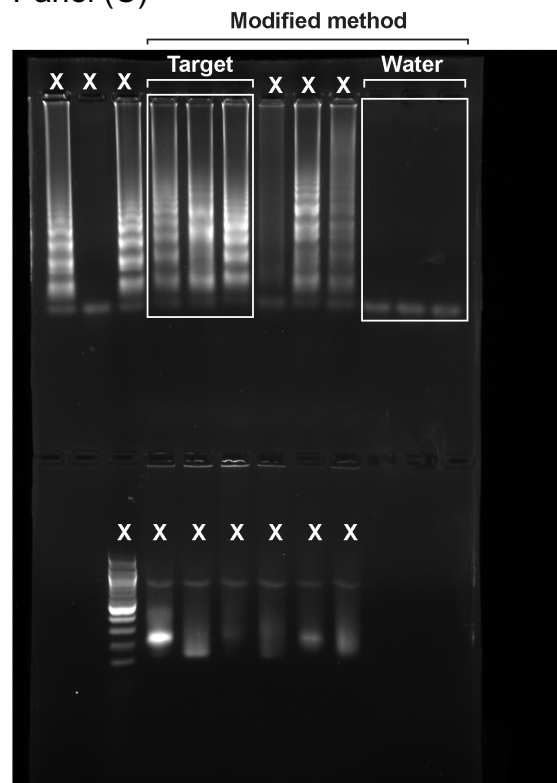


S3 Fig

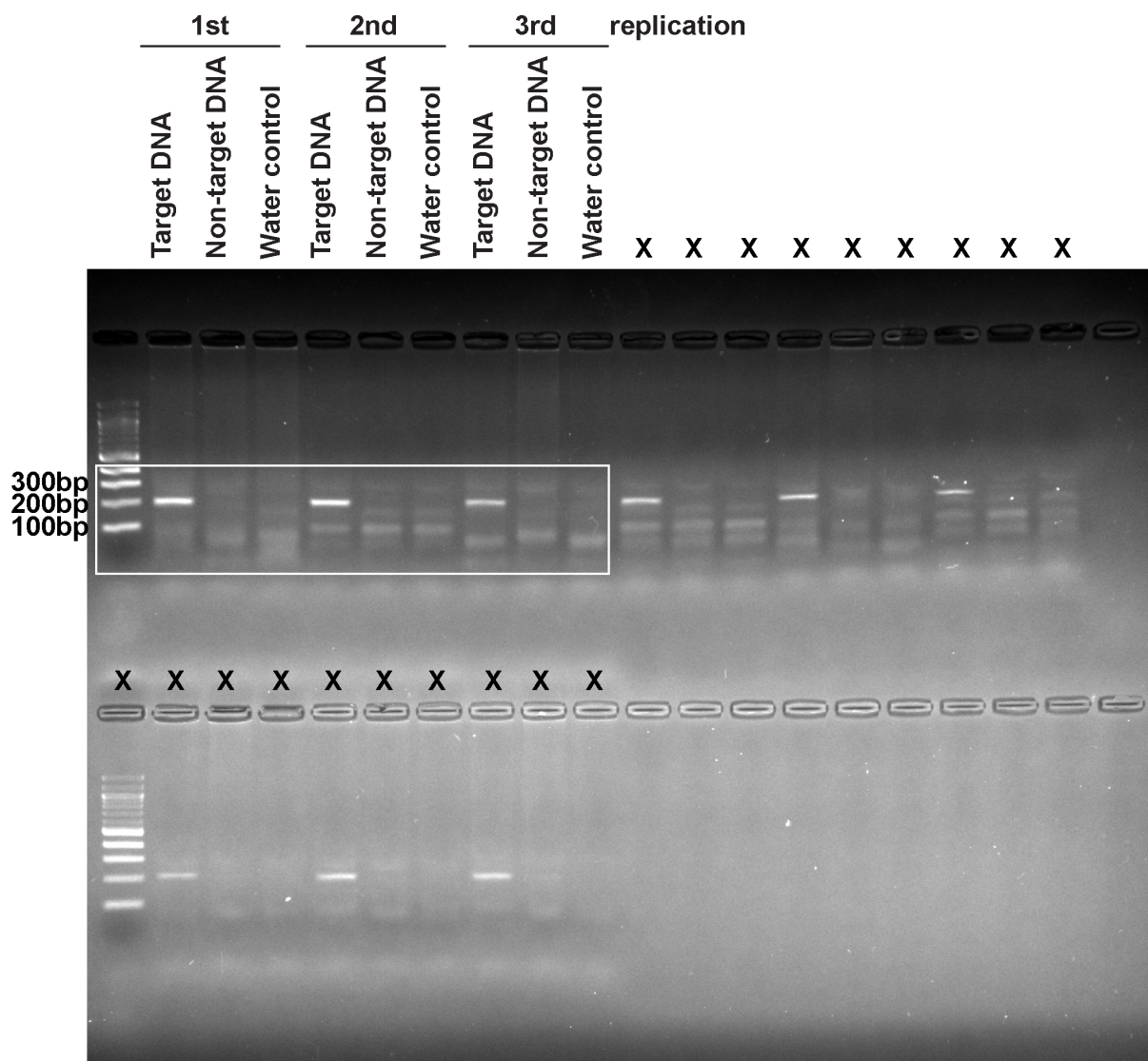
Panel (A)



Panel (C)

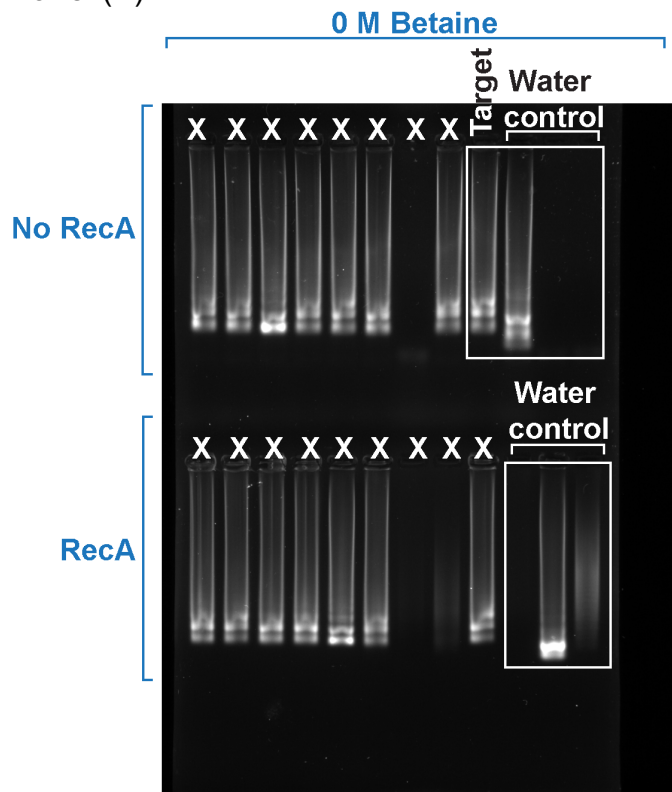


S4 Fig (Amplicons were analysed on 2% agarose gel)



S6 Fig

Panel (A)



Panel (B)

