

SUPPLEMENTARY MATERIAL

Supplementary Figures

Supplementary Fig. S1

Representative cell-cycle data obtained after Dean-Jett Fox modeling. The G1, S, and G2 phases are shown in blue, yellow, and green, respectively.

Supplementary Fig. S2

Western blot analysis of CHK2 levels

Supplementary Fig. S3

Immunofluorescence evaluation of spontaneous CHK1 phosphorylation in freshly isolated hair-follicle cells from patients with hidradenitis suppurativa

(A) Representative image showing phosphoCHK1 in green and CD49f in red

(B) Representative image showing phosphoCHK1 in green and CD34 in red

Figure S1

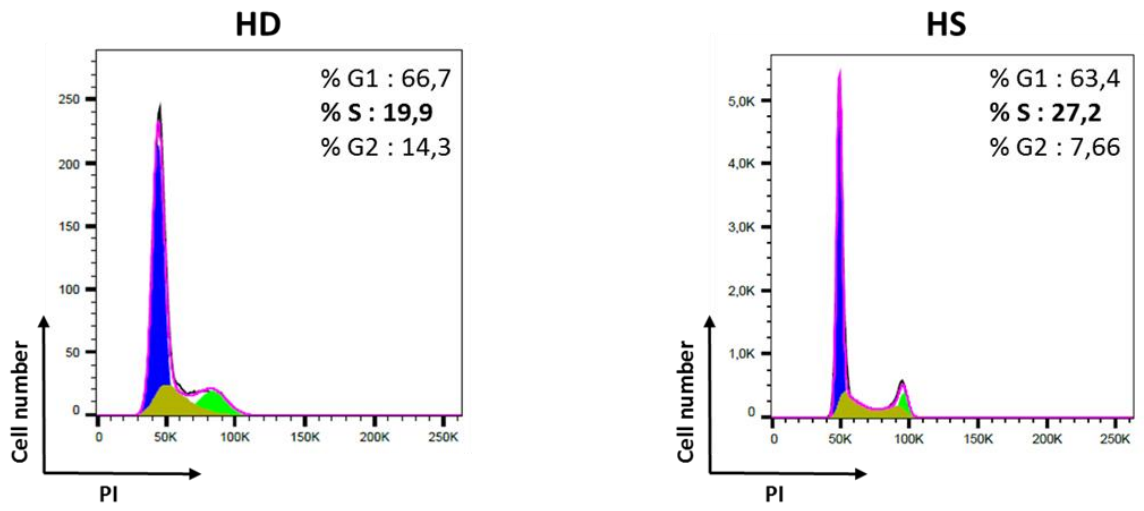


Figure S2

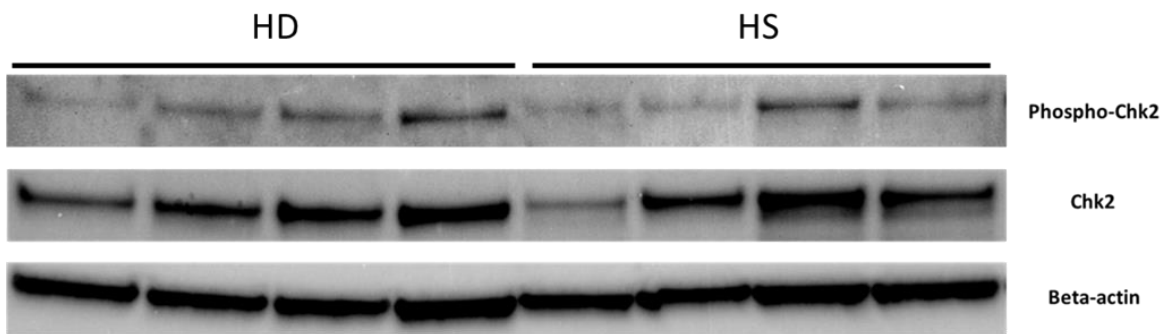
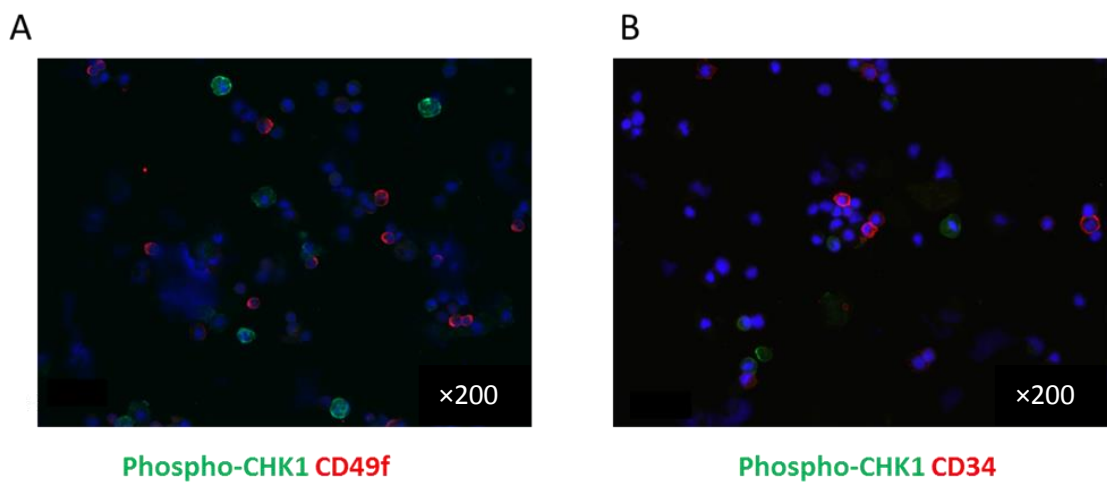


Figure S3



Supplementary tables

Target	Species	Provider	Clone	Dilution
Phospho-IRF3	Rabbit	Abcam	EPR2346	1/1000
IRF3	Rabbit	CST	D83B9	1/1000
Phospho-CHK1 (Ser345)	Rabbit	CST	133D3	1/1000
Phospho-CHK2 (Thr68)	Rabbit	CST	Polyclonal	1/1000
CHK1	Mouse	CST	2G1D5	1/1000
CHK2	Mouse	CST	1C12	1/1000
STING	Rabbit	CST	D2P2F	1/1000
cGAS	Rabbit	CST	D1D3G	1/1000
IFI16	Mouse	Santa Cruz Biotechnology	1G7	1/200
β-actin	Mouse	ThermoFisher	BA3R	1/20000
Anti-mouse IgG, HRP-linked	Goat	CST	Polyclonal	1/2000
Anti-rabbit IgG, HRP-linked	Goat	CST	Polyclonal	1/2000

Supplementary Table 1: Antibodies used for western blot

Supplementary Table S2: Antibodies used for immunocytochemistry

Target	Permeabilization	Blocking	Primary Antibody	Secondary antibody
Phospho-CHK1	10 minutes PBS-Triton 0,2%	1 h PBS- 0.1% Tween + 2% BSA	Rabbit clone 133D3 (CST) 1/50 in blocking buffer Overnight incubation at 4°C	Anti-rabbit AF488 (Abcam) 1/600 in blocking buffer
Phospho-H₂AX	10 minutes PBS-Triton 0,1%	2 h PBS- 0,3% Triton + 5% Normal Goat serum	Rabbit clone 20E3 (CST) 1/1000 PBS-1% BSA-0.3% Triton ON at 4°C	Anti-rabbit AF488 (Abcam) 1/600 in PBS-1% BSA-0.3% Triton
53BP1	15 minutes PBS-Triton 0,1%	1 h PBS + 5% human serum AB	Rabbit polyclonal (Bethyl) 1/20 in PBS 5% Human Serum AB 1h at RT	Anti-rabbit AF488 (Abcam) 1/600 in 5% normal goat serum
ssDNA	15 minutes PBS-Triton 0,1%	1 h PBS + 5% human serum AB	Mouse clone F7-26, (Merck) 1/20 in PBS 5% human serum AB 1h at RT	Anti-mouse AF488 (Abcam) 1/800 in 5% normal goat serum
Lamin B1	10 minutes PBS-Triton 0,2%	1 h PBS- 0,1% Tween 3% BSA	Rabbit Polyclonal (Abcam) 1/1000 in PBS 3% BSA 1h at RT	Anti-rabbit AF488 (Abcam) 1/600 in blocking buffer
Cytokeratin 15	10 minutes PBS-Triton 0,2%	1 h PBS- 0.1% Tween + 2% BSA	Mouse clone LHK15 (Thermo Scientific) 1/50 in blocking buffer	Anti-mouse AF555 (Abcam) 1/600 in blocking buffer
CD45	-	1 h PBS 2% BSA	Mouse clone 2B11+PD726 (DAKO) 1/500 in blocking buffer	Anti-mouse AF555 (Abcam) 1/600 in 5% normal goat serum
CD49f	-	1 h PBS 2% BSA	Rat clone G0H3 (BioLegend) 1/200 in blocking buffer	Anti-rat AF555 (Biolegend) 1/200 in blocking buffer
CD34	-	1 h PBS 2% BSA	Mouse clone QBEND/10, (eBioscience) 1/50 in blocking buffer	Anti-mouse AF488 (Abcam) 1/600 in 5% normal goat serum
IFI16	10 minutes PBS-Triton 0,2%	1 h PBS- 0.1% Tween + 2% BSA	Mouse sc-8023 (Clone 1G7, Santa Cruz) 1/50 in blocking buffer	Anti-mouse AF488 (Abcam) 1/800 in blocking buffer