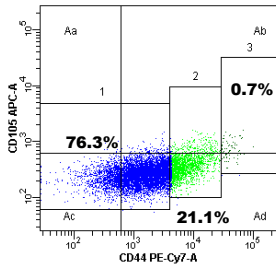
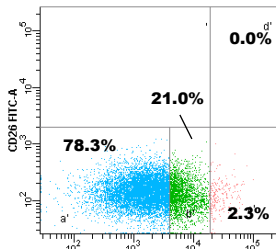


# Supplementary Fig.1

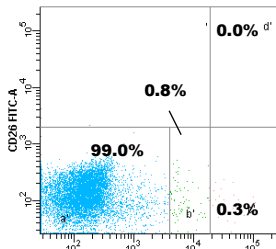
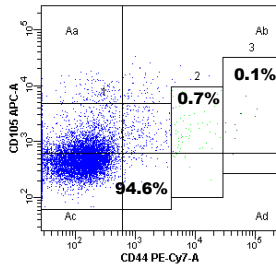
C23 P2, Day 39



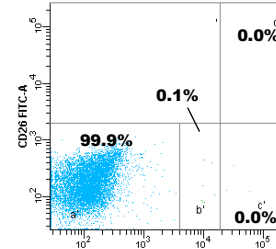
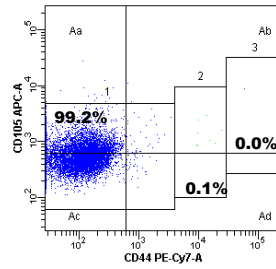
**CD26/CD44**



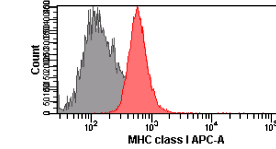
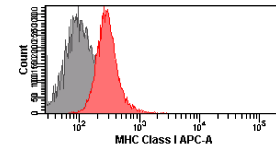
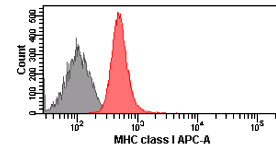
C32 P2, Day 53



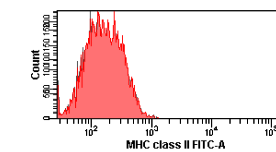
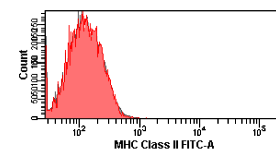
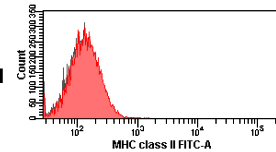
C33 P2, Day55



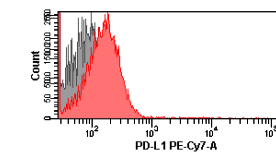
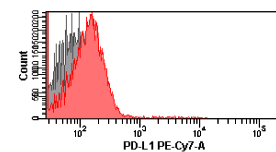
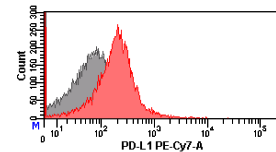
**MHC class I**



**MHC class II**



**PD-L1**



**SUPPLEMENTARY FIGURE 1.** Contrasting expression of CD166, CD24, CD44 and CD105 in three different lots of cHCECs. The expression of CD166, CD24, CD44 and CD105 was analyzed by use of a FACSCanto II Flow Cytometry System. After gating for CD166+CD24- or CD166+CD24+, the following two SPs were defined: CD166+CD24-CD44-/+ CD105+/-SP and CD166+CD24-CD44++CD105+SP. The E-ratios were 76.3, 94.6, and 99.2% for C23, C32, and C33, respectively. For all, the number of culture passages was 2. The donor information is shown in the legend of Figure 1.