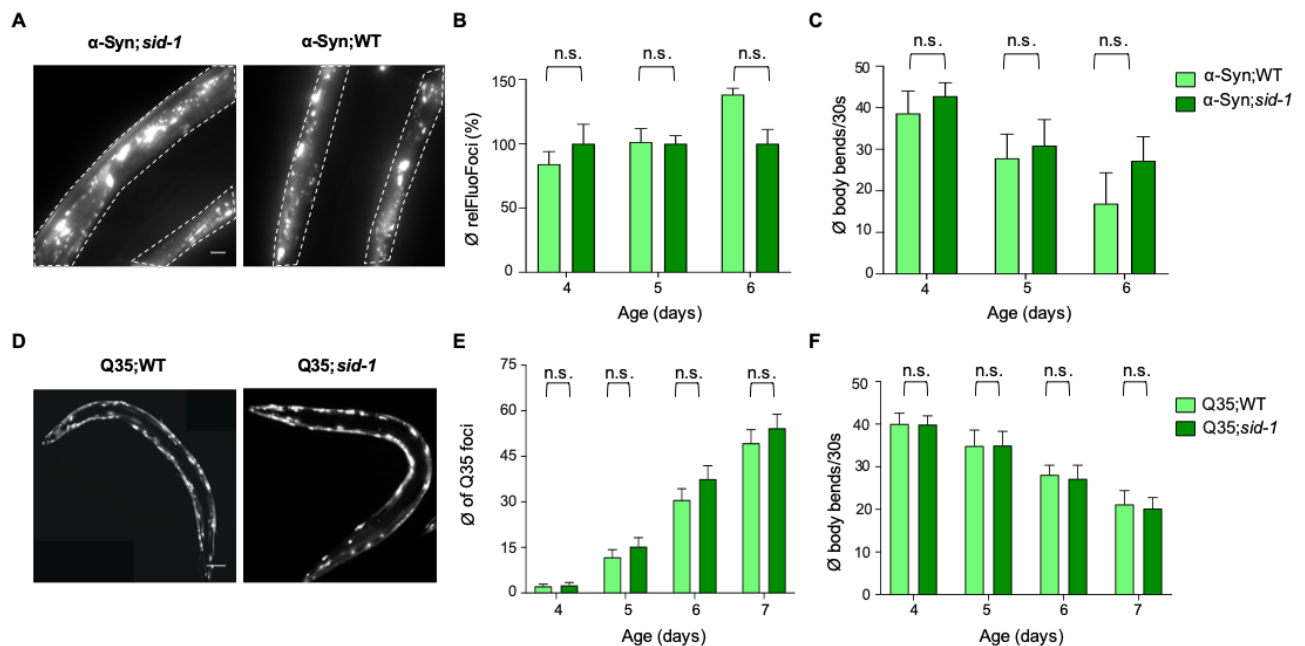


Table of Content

1. Appendix Figure S1: The *sid-1(pk3321)* loss-of-function allele does not reduce α -Syn and Q35 foci formation and toxicity
2. Appendix Figure S2: Total α -Syn and Q35 protein levels do not change upon KD of HSP-110

Appendix Figure S1



Appendix Figure S1: The *sid-1(pk3321)* loss-of-function allele does not reduce α -Syn and Q35 foci formation and toxicity

A Maximum intensity projections of fluorescent microscopy z-stacks of 5-day-old animals expressing α -Syn::YFP in the WT and *pk3321* mutant background. White dashed lines outline the borders of muscle cells. Scale bars: 10 μ m.

B Quantification of α -Syn::YFP foci in 4-, 5-, and 6-day-old worms. RelFluoFoci is displayed (mean \pm SEM in %). Statistical analysis was done using 2-way ANOVA and post-hoc test with Sidak adjustment for multiple comparisons. n.s. = not significant.

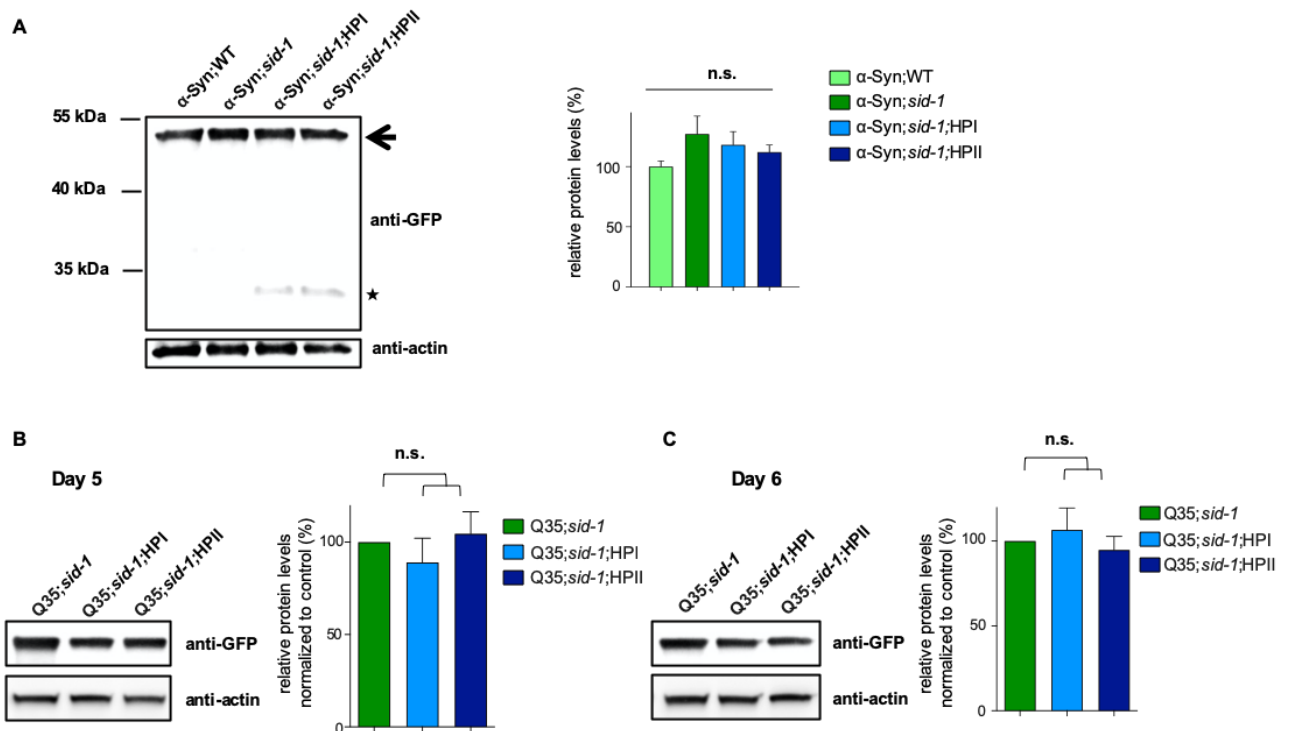
C Quantification of motility as a measure for aggregate toxicity. Displayed is the mean amount of body bends per 30 seconds \pm SEM. Statistical analysis was done using two-way ANOVA with Sidak's adjustment for multiple comparisons. n.s. = not significant.

D Maximum intensity projections of fluorescent microscopy z-stacks of 6-day-old animals expressing Q35::YFP in the WT and *pk3321* mutant background. Scale bars: 100 μ m.

E Manual count of Q35::YFP foci in the WT and *pk3321* mutant background (mean \pm SEM). Statistical analysis was done using two-way ANOVA with Sidak's multiple comparison test. n.s. = not significant.

F Quantification of motility as a measure for aggregate toxicity. Displayed is the mean number of body bends per 30 seconds \pm SEM. Statistical analysis was done using two-way ANOVA with Sidak's multiple comparison test. n.s. = not significant.

Appendix Figure S2



Appendix Figure S2: Total α -Syn and Q35 protein levels do not change upon KD of HSP-110

A, B and **C** Total lysates of age-synchronized strains (**A**: day 5; **B**: day 5 **C**: day 6) expressing the indicated transgenes. α -Syn::YFP or Q35::YFP were detected with an anti-GFP antibody and anti- α -actin antibody was used as loading control. Respective bar graphs display protein levels relative to the control (mean \pm SEM in %). Statistical analysis was done using one-way ANOVA with Tukey's multiple comparison test. n.s. = not significant. The KD of HSP-110 did not significantly affect transgene levels. All strains contain the *sid-1(pk3321)* allele.