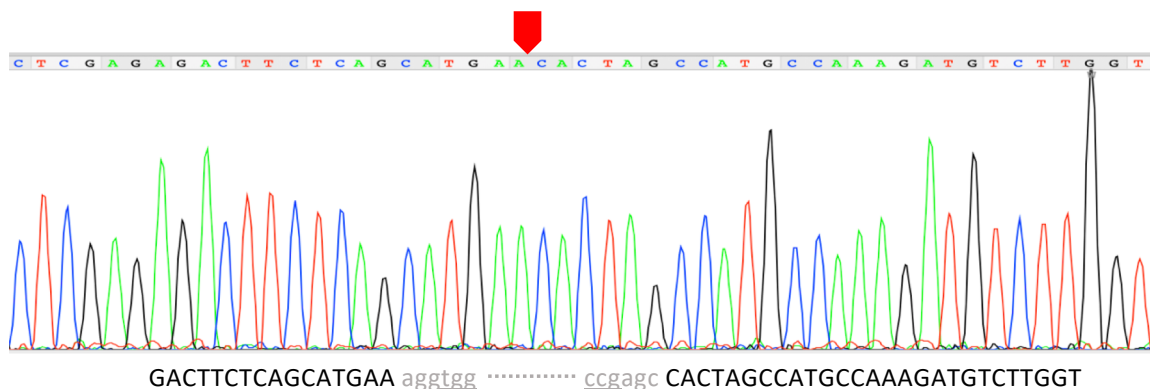
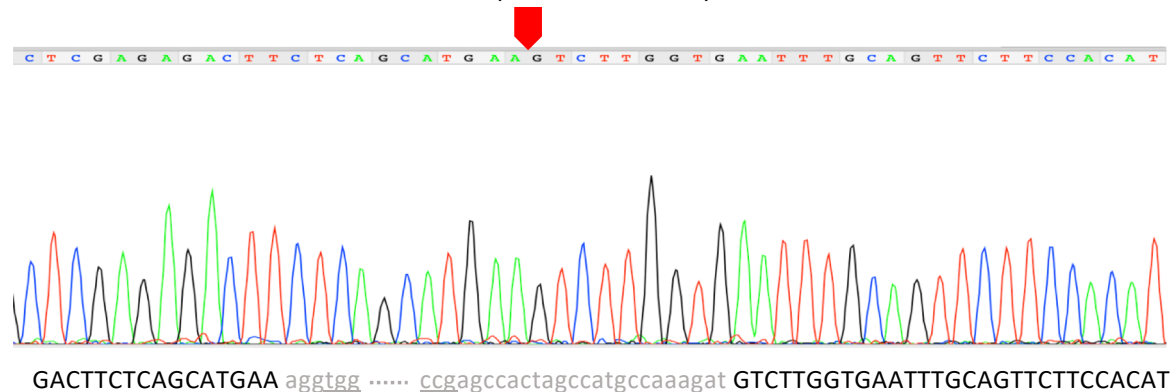


A

iamt1-c1 (186_3313.del)*iamt1-c2* (186_3332.del)

B

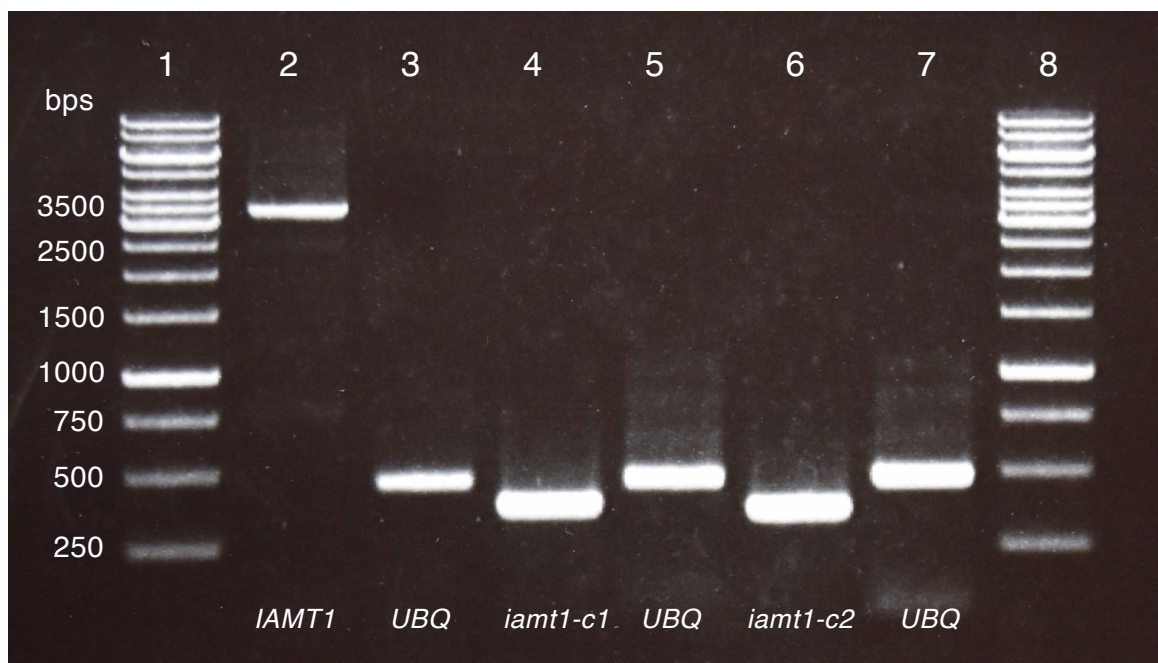


Fig. S2. Conformation of *iamt1-c* mutation in Arabidopsis.

A) Deleted DNA regions in *iamt1-c1* and *-c2* mutants. Underlines indicate the PAM sites. B) PCR using gDNA from WT, *iamt1-c1*, and *-c2* with primers specific for *IAMT1* (*IAMT1*-UTR-F and *IAMT1*-UTR-R in Table S1). Lanes are as follows: Lane 1 (left), 1 kb ladder; Lane 2, PCR product with *IAMT1*-specific primers from WT; Lane 3, PCR product with *UBQ*-specific primers from WT; Lane 4, PCR product with *IAMT1*-specific primers from WT; Lane 5, PCR product with *UBQ*-specific primers from *iamt1-c1*; Lane 6, PCR product with *IAMT1*-specific primers from *iamt1-c2*; Lane 7, PCR product with *UBQ*-specific primers from *iamt1-c2*; Lane 8, 1 kb ladder. *UBQ*: ubiquitin 10.