

# High adherence and low dropout rate in a virtual clinical study of atopic dermatitis through weekly reward-based personalized genetic lifestyle reports

*Ari Pall Isberg*

*04-April-2020*

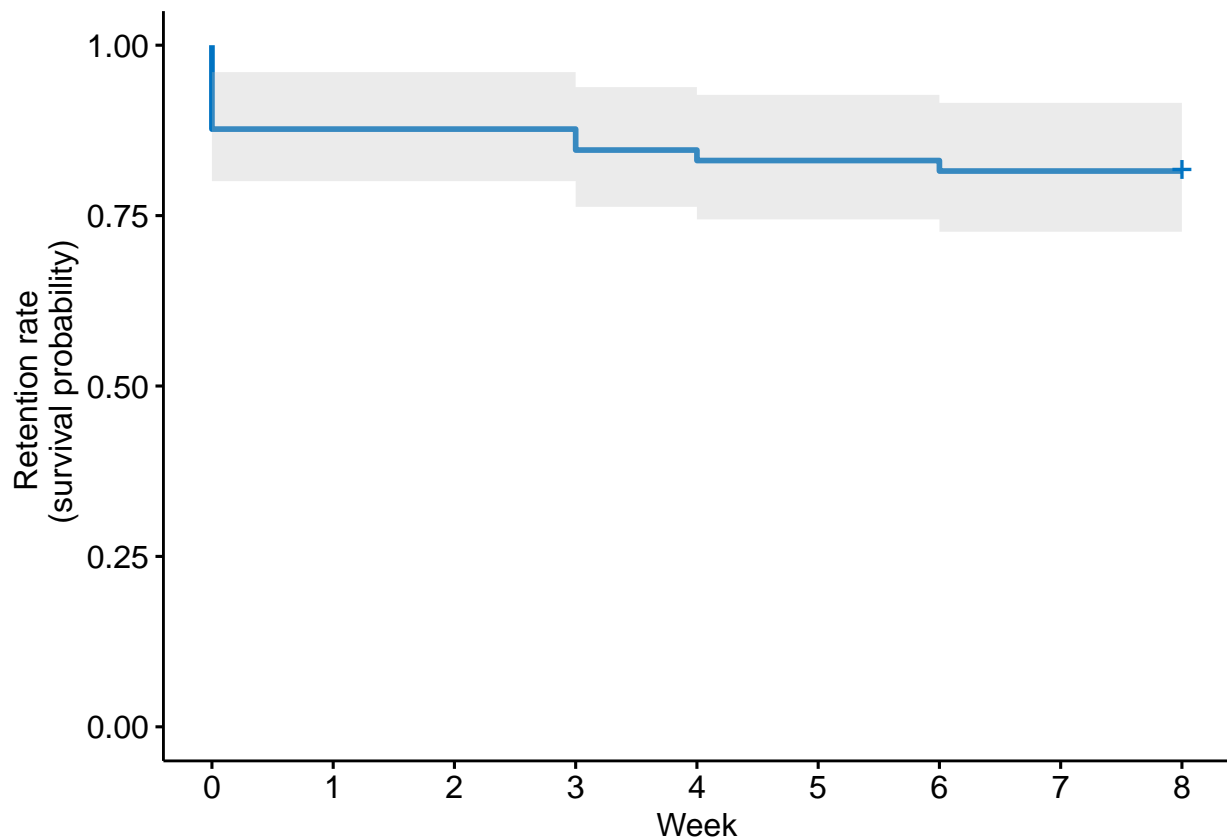
Number of patients: 65. Number of patients not completing: 12

## Retention rate, Kepler Meier graph

```
## Call: survfit(formula = Surv(time_dropped_out, missing_both) ~ 1, data = surv_data)
```

```
##
```

##	time	n.risk	n.event	survival	std.err	lower 95% CI	upper 95% CI
##	0	65	8	0.877	0.0407	0.801	0.961
##	3	57	2	0.846	0.0448	0.763	0.939
##	4	55	1	0.831	0.0465	0.744	0.927
##	6	54	1	0.815	0.0481	0.726	0.915



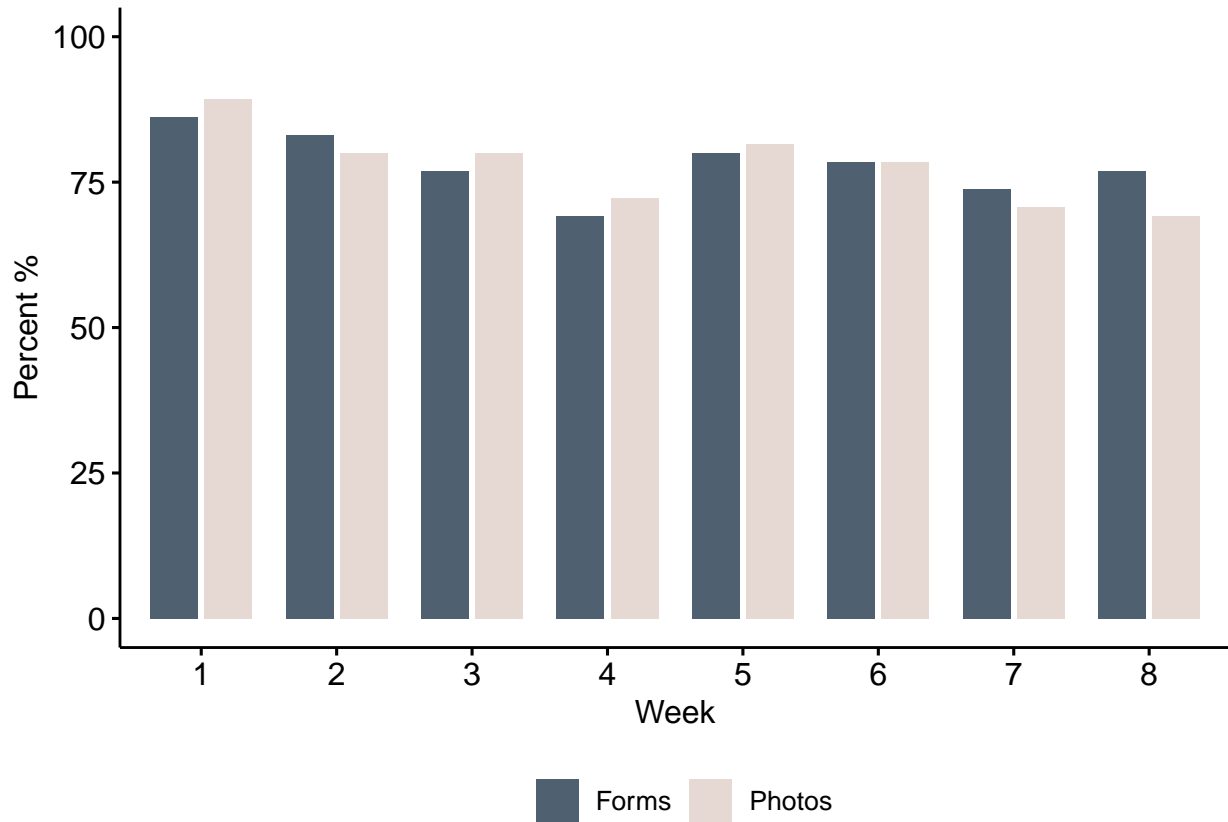
# Visualize adherence

## Bar plot 65 patients

### Name of variables

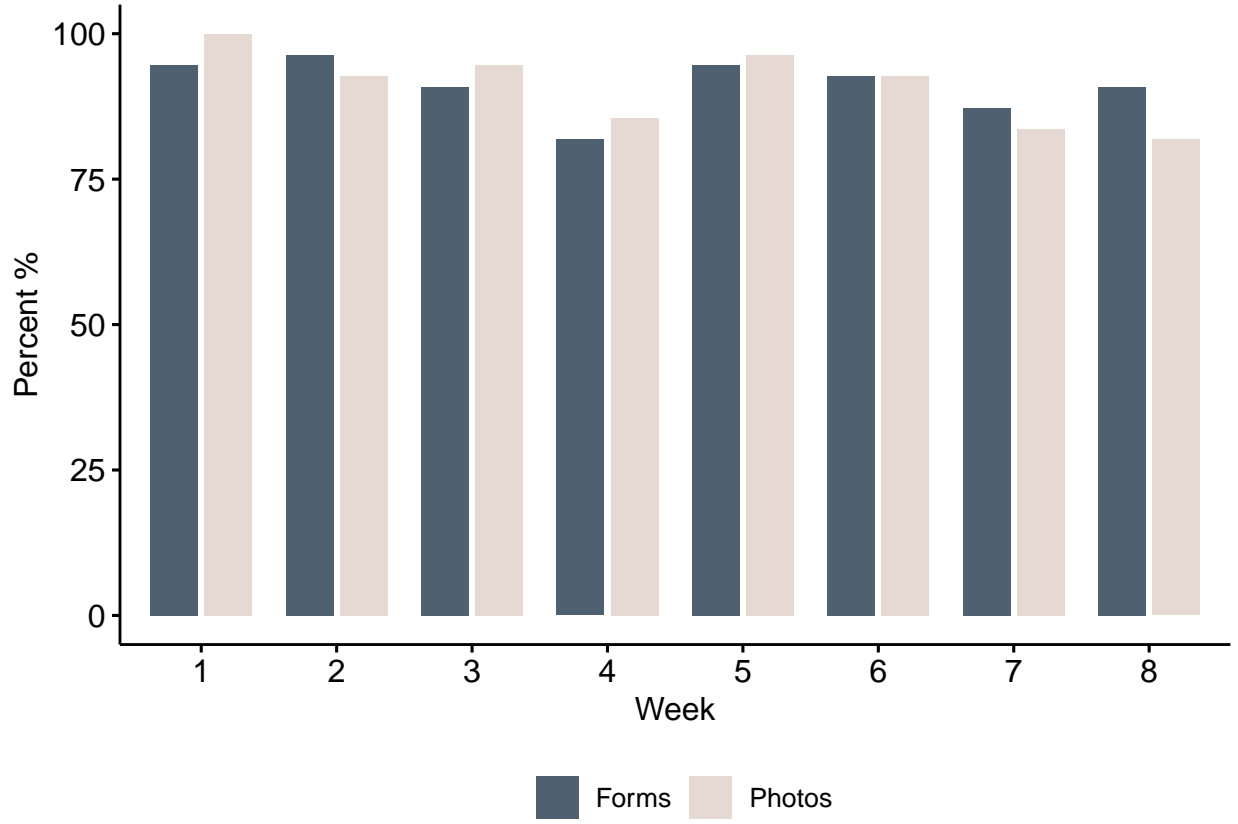
- sum\_form: Number tasks completed for forms for a given week
- sum\_pic: Number tasks completed for pics for a given week
- n: Number of tasks available for form OR pic
- sum\_all: Number tasks completed for pics and forms for a given week
- n\_all: Number of tasks available for form AND pic
- perc\_form:  $\text{sum\_form}/n$
- perc\_pic:  $\text{sum\_pic}/n$
- cumsum\_form: Cumulative sum for sum\_form
- cumsum\_pic: Cumulative sum for sum\_pic
- cumsum\_n: Cumulative sum for n
- cumsum\_all: Cumulative sum for sum\_all
- cumsum\_n\_all: Cumulative sum for n\_all
- cumperc\_form:  $\text{cumsum\_form}/\text{cumsum\_n}$
- cumperc\_pic:  $\text{cumsum\_pic}/\text{cumsum\_n}$
- cumperc\_all:  $\text{cumsum\_all}/\text{cumsum\_n\_all}$

variable	week_1	week_2	week_3	week_4	week_5	week_6	week_7	week_8
sum_form	56	54	50	45	52	51	48	50
sum_pic	58	52	52	47	53	51	46	45
n	65	65	65	65	65	65	65	65
sum_all	114	106	102	92	105	102	94	95
n_all	130	130	130	130	130	130	130	130
perc_form	0.862	0.831	0.769	0.692	0.8	0.785	0.738	0.769
perc_pic	0.892	0.8	0.8	0.723	0.815	0.785	0.708	0.692
cumsum_form	56	110	160	205	257	308	356	406
cumsum_pic	58	110	162	209	262	313	359	404
cumsum_n	65	130	195	260	325	390	455	520
cumsum_all	114	220	322	414	519	621	715	810
cumsum_n_all	130	260	390	520	650	780	910	1040
cumperc_form	0.862	0.846	0.821	0.788	0.791	0.79	0.782	0.781
cumperc_pic	0.892	0.846	0.831	0.804	0.806	0.803	0.789	0.777
cumperc_all	0.877	0.846	0.826	0.796	0.798	0.796	0.786	0.779

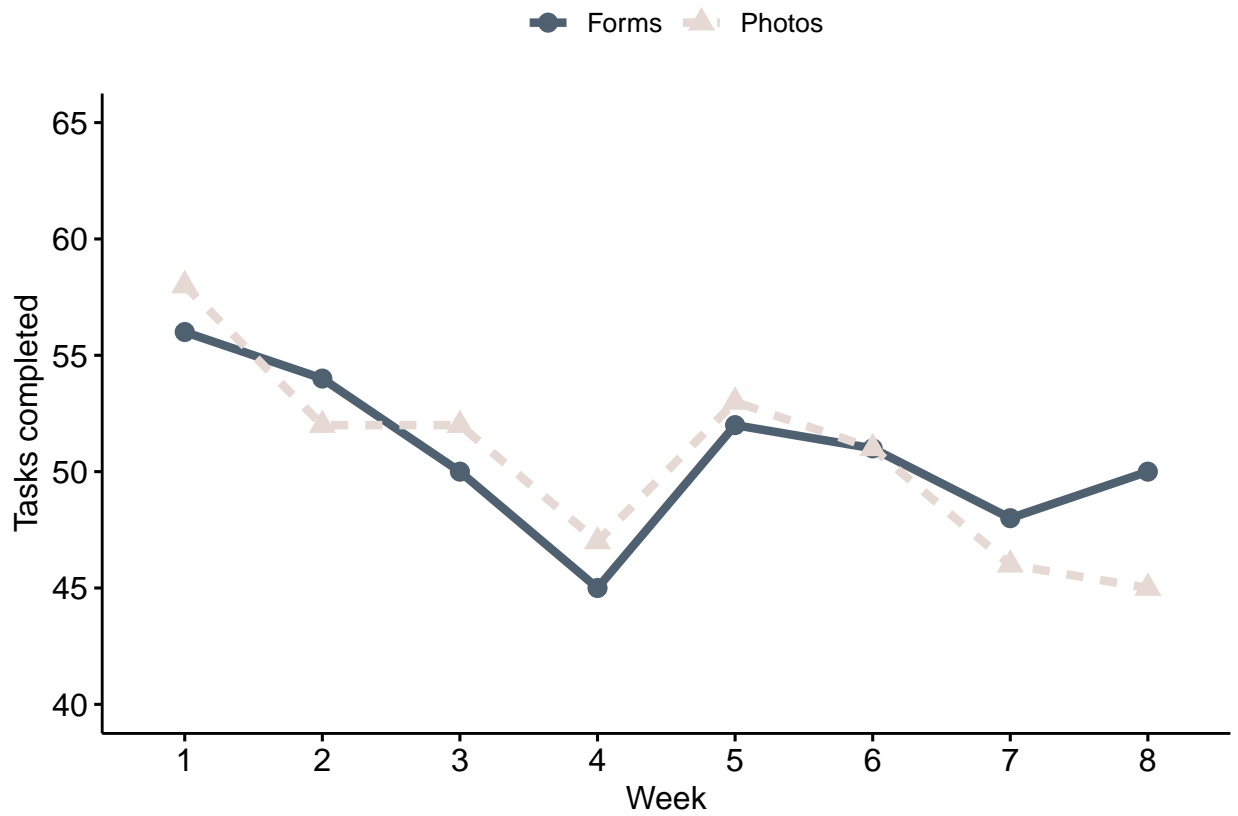


Bar plot 55 patients

variable	week_1	week_2	week_3	week_4	week_5	week_6	week_7	week_8
sum_form	52	53	50	45	52	51	48	50
sum_pic	55	51	52	47	53	51	46	45
n	55	55	55	55	55	55	55	55
sum_all	107	104	102	92	105	102	94	95
n_all	110	110	110	110	110	110	110	110
perc_form	0.945	0.964	0.909	0.818	0.945	0.927	0.873	0.909
perc_pic	1	0.927	0.945	0.855	0.964	0.927	0.836	0.818
cumsum_form	52	105	155	200	252	303	351	401
cumsum_pic	55	106	158	205	258	309	355	400
cumsum_n	55	110	165	220	275	330	385	440
cumsum_all	107	211	313	405	510	612	706	801
cumsum_n_all	110	220	330	440	550	660	770	880
cumperc_form	0.945	0.955	0.939	0.909	0.916	0.918	0.912	0.911
cumperc_pic	1	0.964	0.958	0.932	0.938	0.936	0.922	0.909
cumperc_all	0.973	0.959	0.948	0.92	0.927	0.927	0.917	0.91



Line plots 65 patients



Line plots 55 patients

