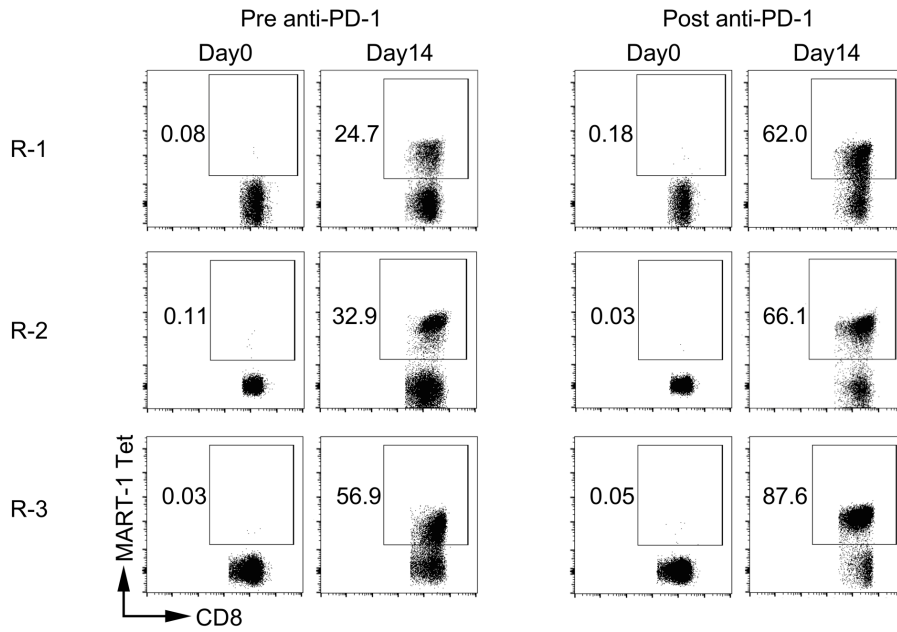
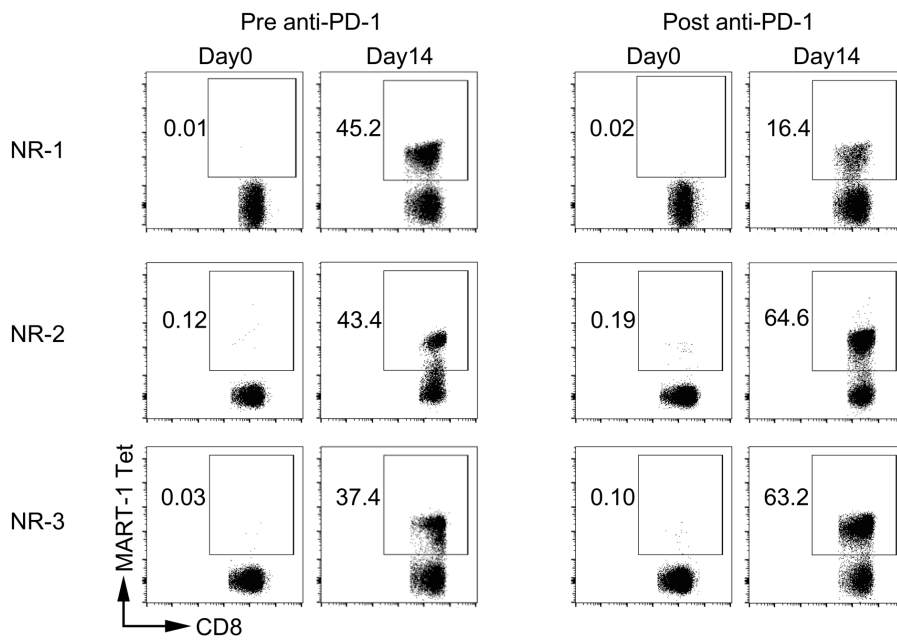


A



B



C

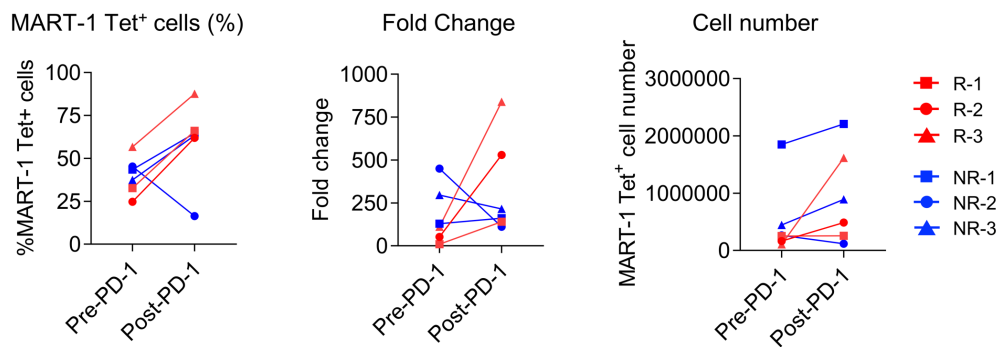


Figure S6. Nano-aAPC expanded MART-1 Tet⁺ cells from patients pre- and post-PD-1 treatment.

(A and B) Expanded MART-1 Tet⁺ CD8⁺ T-cells from patients who were treated with nivolumab. (C) Frequency, fold change and cell number of MART-1 Tet⁺ cells expanded by nano-aAPC at day 14 from 6 patients who have paired pre- and post-anti-PD-1 samples. These patients included 3 responders (R) and 3 non-responders (NR) to PD-1 blockade.