

Supplementary material for

Observational evidence of wildfire-promoting soil moisture anomalies

Sungmin O¹, Xinyuan Hou¹, and Rene Orth¹

¹Max Planck Institute for Biogeochemistry, D-07745 Jena, Germany

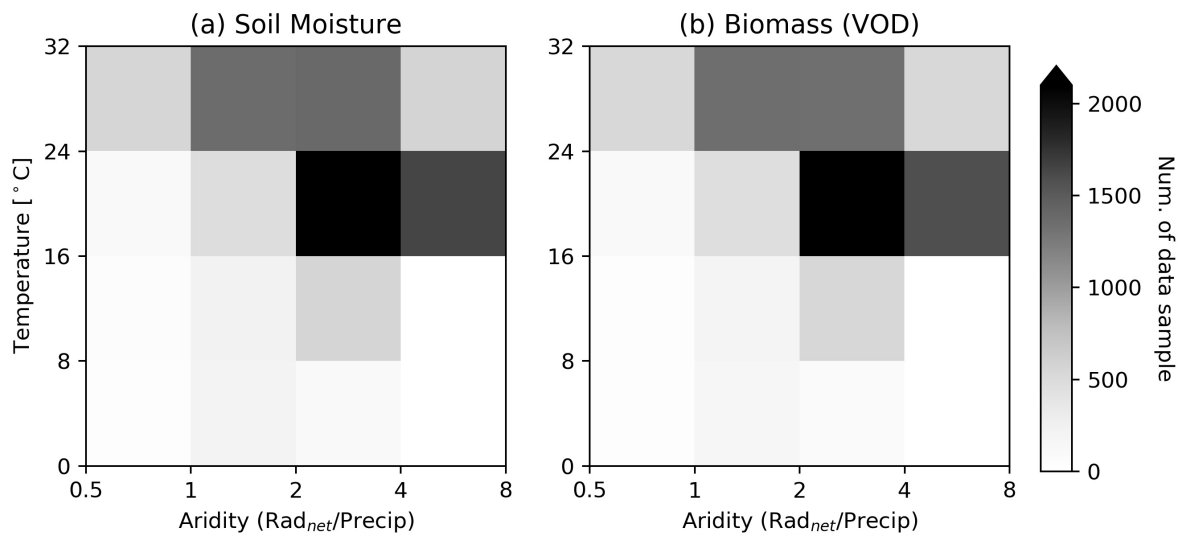


Figure S1: The number of grid cells within each hydro-climatic regime used in Figs. 2 and S2.

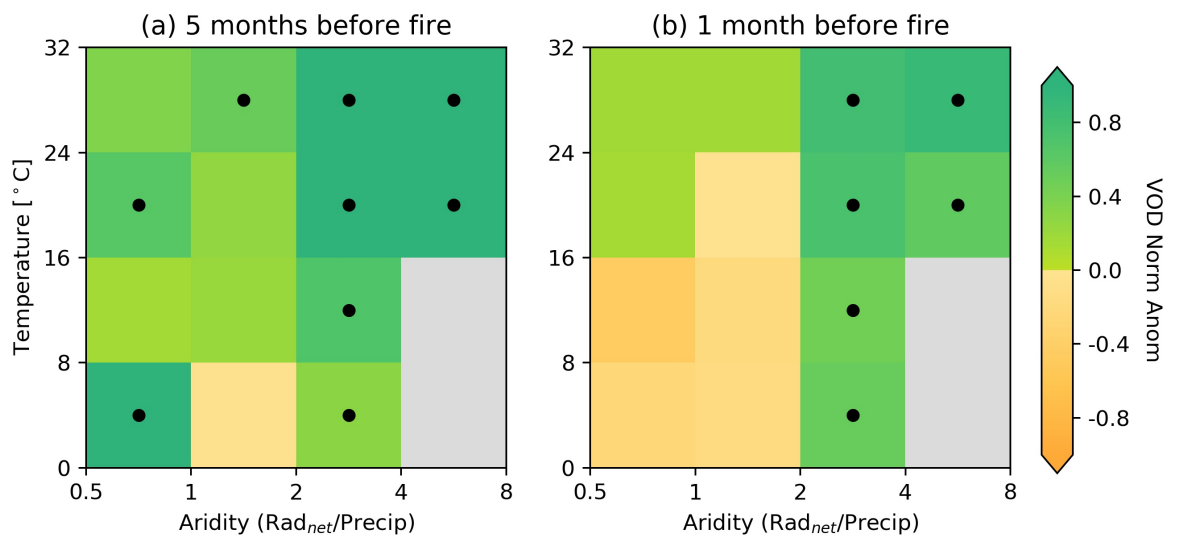


Figure S2: Similar to Fig. 2, but for normalised VOD anomalies. The VOD X-band product from Moesinger et al. (2020) is used.

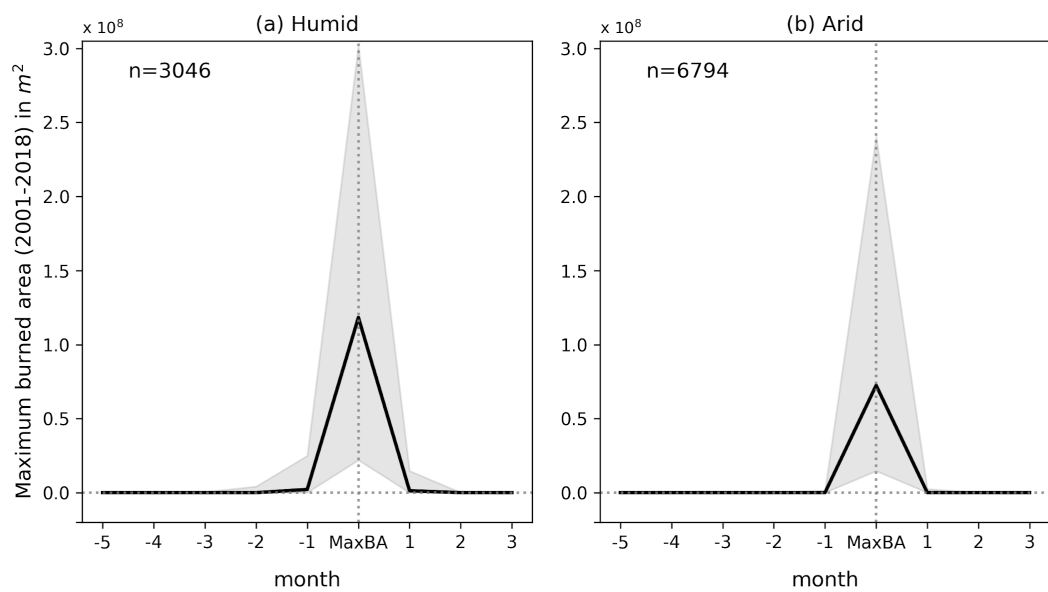


Figure S3: Similar to Fig. 3, but for maximum burned area.

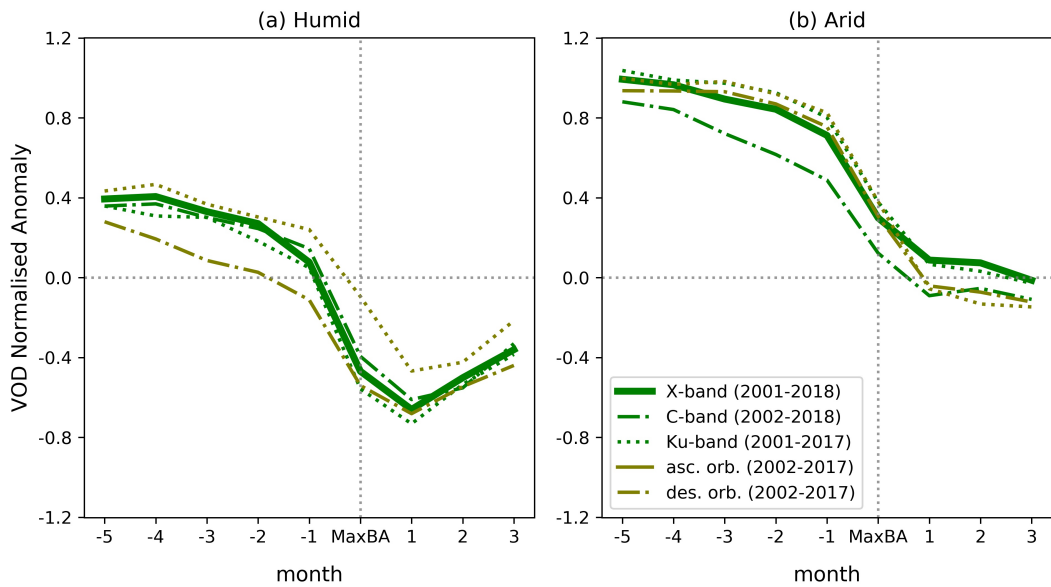


Figure S4: Similar to Fig. 3, but with different VOD products. The thick green line indicates the VOD results shown in Fig. 3, which represent X-band VOD from Moesinger et al. (2020). Ku-Band and C-band VOD from the same product are also shown. In addition, ascending and descending-orbit VOD from multiple sensors processed by Du et al. (2017) are shown. Note that the products are available for slightly different time periods.

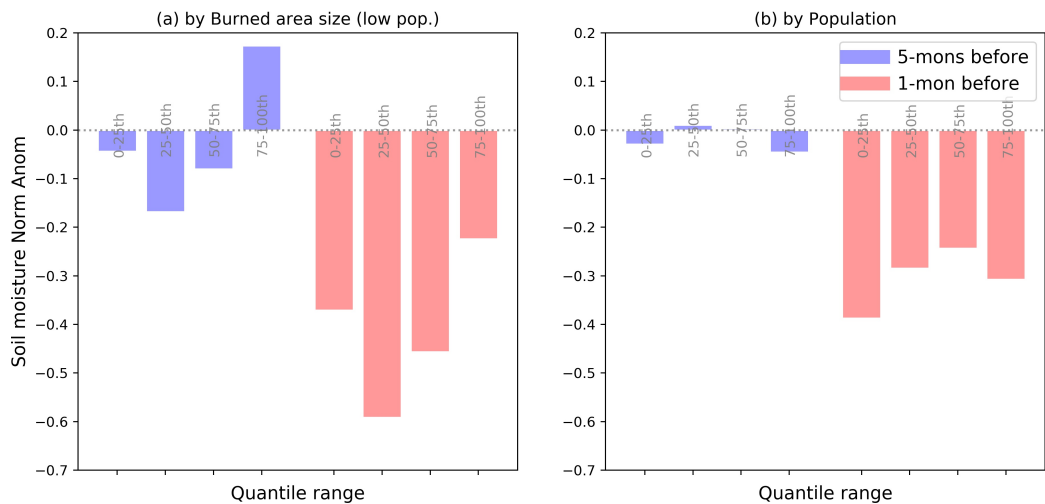


Figure S5: Similar to Fig. 4, but for humid regions with aridity ≤ 2 .