

# **SUPPLEMENTAL MATERIAL**

**Table S1. Person-Years Contributed by Each Race/Ethnic Group by Year, Kaiser Permanente Southern California, 2000–2014.**

Year	Overall Person -years	Hispanic		Asian or Pacific Islander		Black		White		Multiple or Other	
		Person- years	%	Person-years	%	Person-years	%	Person-years	%	Person-years	%
2000	933,256	224,126	24	75,671	8	128,240	14	495,152	53	10,067	1
2001	986,136	249,245	25	81,805	8	132,378	13	511,679	52	11,029	1
2002	1,041,102	275,438	26	88,452	8	136,591	13	528,423	51	12,198	1
2003	1,078,067	294,148	27	93,585	9	139,168	13	538,008	50	13,157	1
2004	1,107,510	310,661	28	98,447	9	141,100	13	543,281	49	14,021	1
2005	1,158,747	337,893	29	105,156	9	144,147	12	556,274	48	15,276	1
2006	1,210,185	365,433	30	112,790	9	147,349	12	567,907	47	16,706	1
2007	1,243,319	384,901	31	119,090	10	148,859	12	572,497	46	17,971	1
2008	1,279,658	405,411	32	125,993	10	150,793	12	578,533	45	18,928	1
2009	1,313,135	422,749	32	133,500	10	151,984	12	585,059	45	19,844	2
2010	1,360,965	443,671	33	142,723	10	154,331	11	599,043	44	21,197	2
2011	1,413,077	467,385	33	152,513	11	156,502	11	614,167	43	22,510	2
2012	1,461,685	491,191	34	161,471	11	159,049	11	626,414	43	23,560	2
2013	1,495,212	510,262	34	168,216	11	159,606	11	633,182	42	23,946	2
2014	1,548,722	538,299	35	176,042	11	162,409	10	647,150	42	24,823	2
Total	18,630,776	5,720,813	31	1,835,454	10	2,212,506	12	8,596,769	46	265,233	1

**Table S2. Characteristics of Persons Hospitalized for Non-ST-Segment Elevation Myocardial Infarction by Race/Ethnicity and Year, Kaiser Permanente Southern California, 2000–2014.\***

Characteristics	Overall	Hispanic <sup>†</sup>	Asian or Pacific Islander <sup>†</sup>	Black <sup>†</sup>	White <sup>†</sup>	Multiple/ Other <sup>†</sup>
<b>Years 2000–2004</b>						
N (%)	9792 (100.0%)	1512 (15.4%)	557 (5.7%)	1269 (13.0%)	6417 (65.5%)	37 (0.4%)
Age (yrs), mean ± SD	69.8 ± 12.5	65.4 ± 12.7	66.6 ± 12.0	67.1 ± 12.0	71.6 ± 12.1	64.4 ± 13.4
Age group (%)						
35–54	1266 (12.9%)	319 (21.1%)	101 (18.1%)	206 (16.2%)	631 (9.8%)	9 (24.3%)
55–74	4662 (47.6%)	812 (53.7%)	311 (55.8%)	682 (53.7%)	2837 (44.2%)	20 (54.1%)
≥75	3864 (39.5%)	381 (25.2%)	145 (26%)	381 (30%)	2949 (46%)	8 (21.6%)
Sex (%)						
Women	3718 (38%)	532 (35.2%)	169 (30.3%)	578 (45.5%)	2425 (37.8%)	14 (37.8%)
Men	6074 (62%)	980 (64.8%)	388 (69.7%)	691 (54.5%)	3992 (62.2%)	23 (62.2%)
<b>Years 2005–2009</b>						
N (%)	10575 (100.0%)	2138 (20.2%)	736 (7.0%)	1253 (11.8%)	6382 (60.3%)	66 (0.6%)
Age (yrs), mean ± SD	70.1 ± 12.7	66.5 ± 12.6	67.3 ± 11.9	68.3 ± 12.6	71.9 ± 12.5	68.8 ± 12.7
Age group (%)						
35–54	1342 (12.7%)	406 (19%)	104 (14.1%)	187 (14.9%)	635 (9.9%)	10 (15.2%)

55–74	4988 (47.2%)	1089 (50.9%)	421 (57.2%)	638 (50.9%)	2810 (44%)	30 (45.5%)
≥75	4245 (40.1%)	643 (30.1%)	211 (28.7%)	428 (34.2%)	2937 (46%)	26 (39.4%)
<b>Sex (%)</b>						
Women	4165 (39.4%)	786 (36.8%)	228 (31%)	628 (50.1%)	2504 (39.2%)	19 (28.8%)
Men	6410 (60.6%)	1352 (63.2%)	508 (69%)	625 (49.9%)	3878 (60.8%)	47 (71.2%)
<b>Years 2010–2014</b>						
N (%)	11487 (100.0%)	2620 (22.8%)	933 (8.1%)	1450 (12.6%)	6407 (55.8%)	77 (0.7%)
Age (yrs), mean ± SD	70.7 ± 12.8	66.9 ± 13.3	67.9 ± 12.5	69.1 ± 12.6	73.1 ± 12.2	66.9 ± 14.2
<b>Age group (%)</b>						
35–54	1377 (12%)	513 (19.6%)	148 (15.9%)	198 (13.7%)	500 (7.8%)	18 (23.4%)
55–74	5305 (46.2%)	1273 (48.6%)	490 (52.5%)	728 (50.2%)	2784 (43.5%)	30 (39%)
≥75	4805 (41.8%)	834 (31.8%)	295 (31.6%)	524 (36.1%)	3123 (48.7%)	29 (37.7%)
<b>Sex (%)</b>						
Women	4629 (40.3%)	1009 (38.5%)	301 (32.3%)	751 (51.8%)	2534 (39.6%)	34 (44.2%)
Men	6858 (59.7%)	1611 (61.5%)	632 (67.7%)	699 (48.2%)	3873 (60.4%)	43 (55.8%)

Abbreviations: SD, standard deviation.

\* Percentages might not add up to 100% because of rounding to the nearest tenth of a percent.

† Persons were categorized as Hispanic (regardless of race) or as one of the following non-Hispanic race groups: Asian or Pacific Islander (API), black, white, or multiple or other (multiple/other).

**Table S3. Characteristics of Persons Hospitalized for ST-Segment Elevation Myocardial Infarction by Race/Ethnicity and Year, Kaiser Permanente Southern California, 2000–2014.\***

<b>Characteristics</b>	<b>Overall</b>	<b>Hispanic<sup>†</sup></b>	<b>Asian or Pacific Islander<sup>†</sup></b>	<b>Black<sup>†</sup></b>	<b>White<sup>†</sup></b>	<b>Multiple/ Other<sup>†</sup></b>
<b>Years 2000–2004</b>						
N (%)	6682 (100.0%)	1186 (17.7%)	365 (5.5%)	702 (10.5%)	4397 (65.8%)	32 (0.5%)
Age (yrs), mean ± SD	66.3 ± 12.4	62.2 ± 12.1	62.6 ± 11.5	64.3 ± 11.8	68.1 ± 12.2	62.3 ± 13.1
Age group (%)						
35–54	1280 (19.2%)	341 (28.8%)	106 (29%)	157 (22.4%)	667 (15.2%)	9 (28.1%)
55–74	3544 (53%)	638 (53.8%)	198 (54.2%)	402 (57.3%)	2289 (52.1%)	17 (53.1%)
≥75	1858 (27.8%)	207 (17.5%)	61 (16.7%)	143 (20.4%)	1441 (32.8%)	6 (18.8%)
Sex (%)						
Women	2240 (33.5%)	311 (26.2%)	80 (21.9%)	293 (41.7%)	1550 (35.3%)	6 (18.8%)
Men	4442 (66.5%)	875 (73.8%)	285 (78.1%)	409 (58.3%)	2847 (64.7%)	26 (81.3%)
<b>Years 2005–2009</b>						
N (%)	5181 (100.0%)	1059 (20.4%)	365 (7.0%)	482 (9.3%)	3238 (62.5%)	37 (0.7%)
Age (yrs), mean ± SD	66.0 ± 12.5	62.4 ± 12.4	63.4 ± 11.8	65.1 ± 12.3	67.6 ± 12.4	65.3 ± 12.7
Age group (%)						
35–54	1012 (19.5%)	308 (29.1%)	81 (22.2%)	99 (20.5%)	515 (15.9%)	9 (24.3%)

55–74	2754 (53.2%)	551 (52%)	222 (60.8%)	262 (54.4%)	1700 (52.5%)	19 (51.4%)
≥75	1415 (27.3%)	200 (18.9%)	62 (17%)	121 (25.1%)	1023 (31.6%)	9 (24.3%)
Sex (%)						
Women	1588 (30.7%)	278 (26.3%)	78 (21.4%)	204 (42.3%)	1014 (31.3%)	14 (37.8%)
Men	3593 (69.3%)	781 (73.7%)	287 (78.6%)	278 (57.7%)	2224 (68.7%)	23 (62.2%)
<b>Years 2010–2014</b>						
N (%)	4136 (100.0%)	984 (23.8%)	352 (8.5%)	388 (9.4%)	2379 (57.5%)	33 (0.8%)
Age (yrs), mean ± SD	66.8 ± 12.8	63.6 ± 12.4	64.3 ± 12.7	65.9 ± 12.5	68.8 ± 12.6	62.2 ± 10.7
Age group (%)						
35–54	717 (17.3%)	245 (24.9%)	79 (22.4%)	70 (18%)	318 (13.4%)	5 (15.2%)
55–74	2171 (52.5%)	522 (53%)	187 (53.1%)	210 (54.1%)	1230 (51.7%)	22 (66.7%)
≥75	1248 (30.2%)	217 (22.1%)	86 (24.4%)	108 (27.8%)	831 (34.9%)	6 (18.2%)
Sex (%)						
Women	1304 (31.5%)	278 (28.3%)	83 (23.6%)	167 (43%)	770 (32.4%)	6 (18.2%)
Men	2832 (68.5%)	706 (71.7%)	269 (76.4%)	221 (57%)	1609 (67.6%)	27 (81.8%)

SD, standard deviation.

\* Percentages might not add up to 100% because of rounding to the nearest tenth of a percent.

† Persons were categorized as Hispanic (regardless of race) or as one of the following non-Hispanic race groups: Asian or Pacific Islander (API), black, white, or multiple or other (multiple/other).

**Table S4. Crude and Age- and Sex-standardized Incidence Rates of Acute Myocardial Infarction Hospitalizations per 100,000 Person-Years by Race/Ethnicity, Kaiser Permanente Southern California, 2000–2014.**

Year	Overall				Hispanic				Asian or Pacific Islander			
	No. of Events	Denominator	Crude Incidence Rate	Age- and Sex-standardized Incidence Rate (95% CI)	No. of Events	Denominator	Crude Incidence Rate	Age- and Sex-standardized Incidence Rate (95% CI)	No. of Events	Denominator	Crude Incidence Rate	Age- and Sex-standardized Incidence Rate (95% CI)
2000	2,974	933,256	319	349 (337, 362)	441	224,126	197	307 (275, 339)	161	75,671	213	271 (226, 316)
2001	3,073	986,136	312	343 (331, 355)	500	249,245	201	307 (277, 336)	170	81,805	208	269 (226, 314)
2002	3,036	1,041,102	292	319 (307, 330)	512	275,438	186	266 (241, 292)	157	88,452	177	239 (198, 279)
2003	3,020	1,078,067	280	302 (291, 313)	546	294,148	186	271 (246, 295)	186	93,585	199	240 (203, 276)
2004	3,056	1,107,510	276	294 (284, 305)	527	310,661	170	245 (223, 268)	196	98,447	199	237 (202, 272)
2005	2,971	1,158,747	256	271 (261, 281)	556	337,893	165	237 (216, 258)	177	105,156	168	198 (167, 229)
2006	2,997	1,210,185	248	260 (251, 269)	614	365,433	168	235 (215, 254)	201	112,790	178	213 (182, 244)
2007	2,859	1,243,319	230	241 (232, 249)	572	384,901	149	208 (190, 226)	227	119,090	191	220 (190, 250)
2008	2,912	1,279,658	228	237 (228, 246)	591	405,411	146	205 (187, 222)	215	125,993	171	190 (163, 216)
2009	2,788	1,313,135	212	218 (209, 226)	626	422,749	148	201 (184, 217)	201	133,500	151	168 (144, 192)
2010	2,829	1,360,965	208	211 (203, 219)	609	443,671	137	182 (167, 197)	224	142,723	157	174 (151, 197)
2011	2,978	1,413,077	211	211 (203, 219)	679	467,385	145	190 (175, 205)	240	152,513	157	172 (150, 194)
2012	2,872	1,461,685	196	195 (188, 202)	688	491,191	140	178 (164, 192)	227	161,471	141	155 (134, 175)
2013	2,918	1,495,212	195	191 (184, 198)	652	510,262	128	161 (149, 174)	254	168,216	151	163 (142, 183)

2014	2,859	1,548,722	185	179 (172, 186)	711	538,299	132	162 (149, 174)	266	176,042	151	158 (138, 177)
	<b>Black</b>				<b>White</b>				<b>Multiple or Other</b>			
Year	No. of Events	Denominator	Crude Incidence Rate	Age- and Sex-standardized Incidence Rate (95% CI)	No. of Events	Denominator	Crude Incidence Rate	Age- and Sex-standardized Incidence Rate (95% CI)	No. of Events	Denominator	Crude Incidence Rate	Age- and Sex-standardized Incidence Rate (95% CI)
2000	377	128,240	294	347 (311, 383)	1,982	495,152	400	376 (359, 392)	13	10,067	129	232 (90, 375)
2001	358	132,378	270	329 (294, 364)	2,032	511,679	397	367 (351, 383)	13	11,029	118	195 (71, 319)
2002	330	136,591	242	290 (258, 323)	2,015	528,423	381	351 (335, 366)	22	12,198	180	268 (139, 396)
2003	376	139,168	270	321 (288, 354)	1,902	538,008	354	320 (306, 335)	10	13,157	76	122 (37, 206)
2004	370	141,100	262	303 (272, 335)	1,951	543,281	359	321 (307, 335)	12	14,021	86	121 (44, 198)
2005	344	144,147	239	274 (244, 303)	1,872	556,274	337	298 (285, 312)	22	15,276	144	248 (132, 364)
2006	338	147,349	229	261 (232, 289)	1,829	567,907	322	284 (271, 297)	15	16,706	90	143 (62, 223)
2007	313	148,859	210	231 (205, 257)	1,727	572,497	302	266 (253, 279)	20	17,971	111	180 (91, 270)
2008	328	150,793	218	238 (212, 264)	1,755	578,533	303	263 (250, 275)	23	18,928	122	217 (118, 316)
2009	274	151,984	180	189 (167, 212)	1,661	585,059	284	243 (231, 255)	26	19,844	131	198 (111, 285)
2010	334	154,331	216	225 (200, 249)	1,640	599,043	274	231 (219, 242)	22	21,197	104	178 (93, 264)
2011	347	156,502	222	225 (201, 249)	1,689	614,167	275	229 (217, 240)	23	22,510	102	163 (89, 237)
2012	325	159,049	204	202 (180, 224)	1,609	626,414	257	211 (201, 222)	23	23,560	98	157 (86, 229)
2013	350	159,606	219	213 (191, 236)	1,635	633,182	258	209 (199, 219)	27	23,946	113	122 (72, 172)
2014	340	162,409	209	199 (177, 220)	1,524	647,150	235	189 (179, 198)	18	24,823	73	99 (48, 151)





**Table S5. Acute Myocardial Infarction Hospitalizations per 100,000 Person-Years Among Women by Race/Ethnicity, Age Group, and Sex, Kaiser Permanente Southern California, 2000–2014.**

Year (age yrs)	Hispanic		Asian or Pacific Islander		Black		White		Multiple or Other	
	No. of Events	Incidence Rate	No. of Events	Incidence Rate	No. of Events	Incidence Rate	No. of Events	Incidence Rate	No. of Events	Incidence Rate
(35–54)										
2000	29	34	7	26	33	72	69	53	1	28
2001	30	32	7	24	22	47	61	46	2	52
2002	31	30	8	26	24	50	52	39	2	48
2003	25	23	10	31	31	64	50	37	0	0
2004	32	28	9	27	33	69	43	33	2	44
2005	33	27	4	12	24	50	51	39	1	20
2006	36	28	3	8	24	49	47	36	0	0
2007	28	21	3	8	18	37	52	40	1	18
2008	20	14	8	20	19	39	49	38	0	0
2009	32	22	7	17	23	49	54	43	3	49
2010	22	14	8	19	22	47	39	31	2	31
2011	36	23	10	22	13	28	38	30	1	15
2012	34	21	5	10	22	48	43	34	0	0
2013	35	21	7	14	23	51	34	28	0	0

2014	46	26	10	20	20	45	26	21	2	27
<b>(55-74)</b>										
2000	81	257	20	141	87	352	309	305	2	156
2001	84	243	21	134	90	350	320	303	0	0
2002	72	188	24	137	70	259	304	274	1	61
2003	92	220	36	189	80	284	301	260	1	54
2004	82	183	20	96	81	275	293	246	3	145
2005	74	151	25	110	75	245	273	221	4	172
2006	99	185	35	142	77	243	279	219	2	77
2007	103	180	29	109	78	240	262	201	2	70
2008	109	178	34	119	78	233	236	177	4	132
2009	109	166	20	65	67	194	239	174	2	62
2010	105	148	31	94	75	210	231	161	0	0
2011	123	161	32	90	87	235	258	173	3	79
2012	116	142	40	106	75	196	233	151	1	25
2013	105	120	39	98	78	199	231	146	6	147
2014	129	136	46	110	98	241	227	138	3	70
<b>(≥75)</b>										
2000	48	1,044	10	557	32	680	352	979	2	1,025
2001	30	567	13	628	52	1,014	410	1,084	2	962

2002	40	658	23	987	49	891	399	1,007	1	442
2003	57	822	14	526	55	929	355	863	1	374
2004	57	733	21	697	66	1,049	381	899	1	334
2005	64	731	17	497	58	864	349	792	4	1,212
2006	70	714	25	652	56	781	353	777	1	270
2007	63	592	28	671	55	729	349	759	2	531
2008	73	633	25	542	66	826	353	754	4	1,006
2009	83	659	22	429	59	696	335	697	4	942
2010	72	520	22	388	49	541	326	655	6	1,295
2011	88	577	26	413	68	705	349	678	3	601
2012	82	488	27	390	69	674	346	653	4	733
2013	97	531	35	462	90	834	365	674	2	335
2014	114	573	31	370	60	523	355	635	5	753

**Table S6. Acute Myocardial Infarction Hospitalizations per 100,000 Person-Years Among Men by Race/Ethnicity, Age Group, and Sex, Kaiser Permanente Southern California, 2000–2014.**

Year (age yrs)	Hispanic		Asian or Pacific Islander		Black		White		Multiple or Other	
	No. of Events	Incidence Rate	No. of Events	Incidence Rate	No. of Events	Incidence Rate	No. of Events	Incidence Rate	No. of Events	Incidence Rate
<b>(35–54)</b>										
2000	74	103	25	134	43	142	206	183	2	53
2001	85	106	31	156	36	116	185	160	2	49
2002	115	129	29	137	38	120	197	167	5	112
2003	107	113	42	191	47	148	183	156	1	21
2004	104	105	33	146	36	113	189	162	1	20
2005	102	94	27	114	31	97	174	147	3	56
2006	115	98	29	115	41	126	183	153	3	51
2007	94	77	28	107	32	98	183	153	4	65
2008	107	84	36	131	39	120	165	139	1	16
2009	105	80	33	114	18	56	141	120	3	45
2010	120	89	40	130	33	104	143	121	5	71
2011	99	71	34	103	36	114	132	111	0	0
2012	112	78	34	98	22	70	113	95	1	13
2013	94	64	38	106	25	81	106	90	9	119

2014	122	80	36	97	31	102	99	84	6	78
<b>(55–74)</b>										
2000	159	567	79	660	137	707	651	733	4	345
2001	189	611	72	546	114	576	627	676	6	459
2002	203	595	54	371	111	542	672	689	10	663
2003	210	567	60	383	109	516	591	582	6	349
2004	178	447	94	557	112	517	625	600	4	209
2005	203	467	79	432	108	485	638	592	6	282
2006	220	465	76	381	87	378	600	540	5	211
2007	205	408	110	521	97	417	544	480	6	230
2008	191	356	94	419	84	353	553	474	9	320
2009	217	378	93	389	75	307	542	451	11	362
2010	190	308	87	341	103	411	505	403	6	180
2011	231	349	101	372	100	389	517	397	11	301
2012	234	329	70	245	93	350	496	367	12	305
2013	221	291	95	317	76	281	541	388	10	243
2014	209	255	100	321	82	294	481	332	2	46
<b>(≥75)</b>										
2000	50	1,373	20	1,282	45	1,403	395	1,535	2	1,298
2001	82	1,999	26	1,485	44	1,298	429	1,599	1	639

2002	51	1,087	19	981	38	1,073	391	1,404	3	1,732
2003	55	1,029	24	1,086	54	1,459	422	1,470	1	538
2004	74	1,229	19	768	42	1,080	420	1,417	1	461
2005	80	1,172	25	901	48	1,158	387	1,250	4	1,586
2006	74	966	33	1,068	53	1,221	367	1,140	4	1,440
2007	79	958	29	858	33	726	337	1,031	5	1,667
2008	91	1,021	18	482	42	873	399	1,190	5	1,577
2009	80	826	26	625	32	625	350	1,009	3	877
2010	100	943	36	780	52	932	396	1,098	3	797
2011	102	885	37	727	43	717	395	1,056	5	1,255
2012	110	883	51	904	44	689	378	977	5	1,149
2013	100	742	40	645	58	866	358	902	0	0
2014	91	618	43	627	49	690	336	818	0	0

**Table S7. Crude and Standardized Age- and Sex-standardized Incidence of Non-ST-Segment Elevation Myocardial Infarction (NSTEMI)**

**Hospitalizations per 100,000 Person-Years by Race/Ethnicity, Kaiser Permanente Southern California, 2000–2014.**

Year	Overall				Hispanic				Asian or Pacific Islander			
	No. of Events	Denominator	Crude Incidence Rate	Adjusted Incidence Rate (95% CI)	No. of Events	Denominator	Crude Incidence Rate	Adjusted Incidence Rate (95% CI)	No. of Events	Denominator	Crude Incidence Rate	Adjusted Incidence Rate (95% CI)
2000	1,861	934,766	199	219 (209, 229)	253	224,001	113	181 (156, 206)	87	75,498	115	154 (119, 190)
2001	1,972	986,762	200	222 (212, 231)	294	248,940	118	187 (164, 211)	102	81,521	125	170 (134, 206)
2002	1,954	1,041,324	188	206 (197, 216)	313	274,967	114	173 (152, 195)	105	88,184	119	164 (130, 199)
2003	1,979	1,078,599	183	199 (190, 208)	328	293,690	112	174 (153, 194)	122	93,230	131	154 (125, 183)
2004	2,026	1,108,149	183	196 (188, 205)	324	310,184	104	158 (140, 177)	141	98,138	144	181 (149, 213)
2005	2,055	1,158,916	177	188 (180, 196)	376	337,232	111	169 (150, 187)	120	104,781	115	139 (112, 165)
2006	2,104	1,210,065	174	183 (175, 191)	449	364,682	123	183 (165, 201)	140	112,447	125	151 (125, 178)



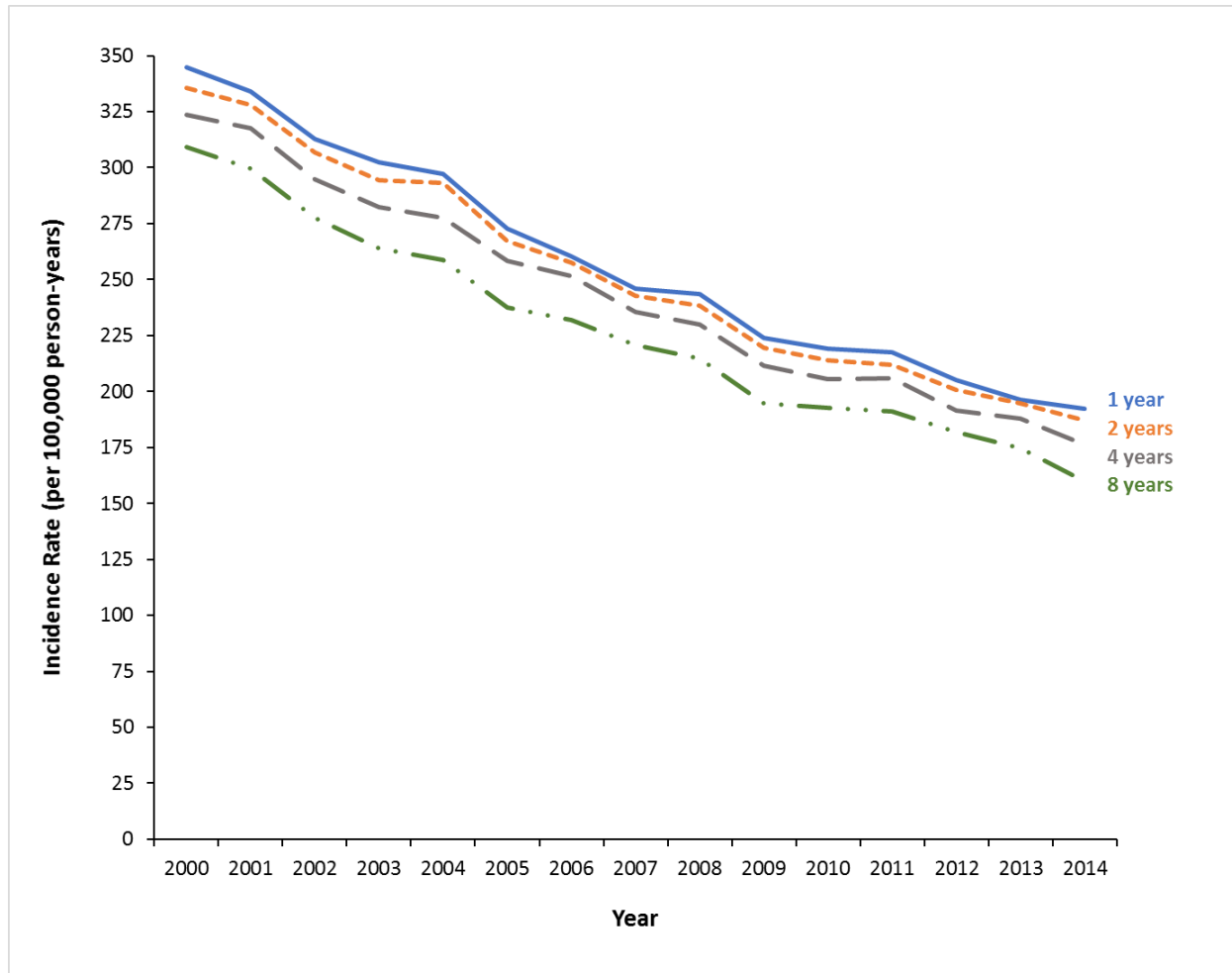
2007	2,076	1,242,838	167	175 (168, 183)	409	383,987	107	156 (140, 172)	173	118,716	146	174 (147, 201)
2008	2,205	1,278,910	172	180 (172, 187)	453	404,313	112	160 (144, 176)	161	125,572	128	144 (121, 167)
2009	2,135	1,311,750	163	167 (160, 174)	451	421,489	107	152 (137, 166)	142	133,066	107	120 (100, 141)
2010	2,198	1,359,334	162	164 (157, 171)	455	442,296	103	139 (126, 152)	181	142,262	127	142 (121, 163)
2011	2,359	1,410,960	167	167 (161, 174)	541	465,914	116	156 (142, 170)	175	151,958	115	125 (106, 144)
2012	2,301	1,459,373	158	156 (150, 163)	544	489,528	111	145 (132, 158)	190	160,947	118	129 (110, 148)
2013	2,326	1,492,845	156	153 (146, 159)	514	508,594	101	130 (119, 142)	191	167,638	114	124 (106, 142)
2014	2,303	1,546,152	149	144 (138, 150)	566	536,477	106	132 (120, 143)	196	175,485	112	116 (100, 133)
	<b>Black</b>				<b>White</b>				<b>Multiple or Other</b>			

Year	No. of Events	Denominator	Crude Incidence Rate	Adjusted Incidence Rate (95% CI)	No. of Events	Denominator	Crude Incidence Rate	Adjusted Incidence Rate (95% CI)	No. of Events	Denominator	Crude Incidence Rate	Adjusted Incidence Rate (95% CI)
2000	258	128,200	201	240 (210, 271)	1,257	497,039	253	234 (221, 247)	6	10,028	60	108 (14, 202)
2001	245	132,286	185	232 (202, 263)	1,325	513,032	258	236 (223, 249)	6	10,983	55	111 (9, 213)
2002	238	136,378	175	212 (185, 240)	1,287	529,645	243	219 (207, 231)	11	12,149	91	131 (42, 219)
2003	265	138,961	191	230 (201, 258)	1,260	539,622	233	208 (196, 219)	4	13,096	31	49 (0, 104)
2004	263	140,882	187	224 (196, 252)	1,288	544,980	236	207 (196, 219)	10	13,966	72	97 (30, 163)
2005	255	143,866	177	209 (183, 235)	1,293	557,834	232	202 (191, 213)	11	15,204	72	120 (40, 200)
2006	251	147,045	171	196 (171, 221)	1,254	569,262	220	191 (180, 202)	10	16,628	60	97 (31, 164)
2007	244	148,503	164	180 (157, 203)	1,238	573,743	216	187 (176, 198)	12	17,888	67	119 (43, 195)
2008	269	150,481	179	197 (173, 221)	1,303	579,712	225	190 (179, 200)	19	18,832	101	182 (91, 273)
2009	234	151,533	154	164 (143, 186)	1,294	585,904	221	185 (175, 196)	14	19,757	71	133 (55, 211)
2010	281	153,846	183	190 (167, 212)	1,265	599,844	211	173 (163, 183)	16	21,086	76	148 (66, 229)
2011	291	155,957	187	189 (167, 211)	1,337	614,732	217	178 (168, 187)	15	22,399	67	125 (55, 195)
2012	280	158,485	177	174 (154, 195)	1,273	626,972	203	164 (155, 174)	14	23,441	60	105 (45, 165)
2013	305	159,058	192	187 (165, 208)	1,300	633,717	205	164 (155, 173)	16	23,838	67	72 (34, 111)
2014	293	161,785	181	171 (151, 191)	1,232	647,695	190	150 (141, 158)	16	24,710	65	99 (44, 153)



Year	Black				White				Multiple or Other			
	No. of Events	Denominator	Crude Incidence Rate	Standardized Incidence Rate (95% CI)	No. of Events	Denominator	Crude Incidence Rate	Standardized Incidence Rate (95% CI)	No. of Events	Denominator	Crude Incidence Rate	Standardized Incidence Rate (95% CI)
2000	150	129,108	116	133 (111, 155)	929	499,543	186	175 (164, 186)	9	10,097	89	146 (34, 257)
2001	153	133,317	115	131 (110, 153)	882	516,549	171	158 (148, 169)	5	11,066	45	51 (4, 97)
2002	123	137,585	89	106 (87, 126)	916	533,715	172	159 (148, 169)	10	12,243	82	125 (35, 216)
2003	143	140,237	102	120 (99, 140)	832	543,745	153	139 (130, 149)	6	13,200	45	73 (8, 137)
2004	133	142,260	93	102 (84, 119)	838	549,245	153	137 (128, 147)	2	14,063	14	25 (0, 65)
2005	117	145,397	80	89 (72, 105)	730	562,569	130	117 (108, 125)	12	15,325	78	128 (46, 209)
2006	112	148,639	75	83 (68, 99)	739	574,493	129	114 (106, 123)	4	16,765	24	41 (0, 86)
2007	105	150,220	70	78 (63, 93)	650	579,330	112	100 (92, 107)	7	18,030	39	57 (11, 104)
2008	82	152,236	54	57 (45, 70)	616	585,672	105	94 (86, 101)	5	18,990	26	39 (0, 78)
2009	66	153,514	43	44 (33, 54)	503	592,644	85	74 (68, 81)	9	19,920	45	49 (14, 85)
2010	84	155,950	54	56 (44, 68)	525	607,025	86	76 (70, 83)	5	21,284	23	32 (0, 65)
2011	85	158,212	54	54 (43, 66)	487	622,644	78	66 (60, 72)	11	22,608	49	70 (24, 116)
2012	70	160,878	44	44 (33, 54)	466	635,377	73	61 (55, 67)	5	23,669	21	28 (0, 56)
2013	79	161,574	49	48 (37, 58)	470	642,611	73	60 (54, 65)	9	24,070	37	43 (12, 73)
2014	70	164,538	43	41 (31, 51)	431	657,079	66	54 (48, 59)	3	24,963	12	12 (0, 25)

**Figure S1. Acute Myocardial Infarction (AMI) Hospitalizations per 100,000 Person-Years by Length of Time in Membership, Standardized to the 2010 United States Census by Age and Sex, Kaiser Permanente Southern California, 2000–2014.**



AMI hospitalizations, using time in membership (1, 2, 4, and 8 years) requirements, were compared. Trends in the decline of AMI hospitalizations were similar; however, estimated incidence rates were different because this figure includes persons missing race/ethnicity data who were excluded in the main analysis