

Figure S1. (A) Tumors that were harvested on day 15 after implantation. (B) CD133, NESTIN and SOX2 protein expression levels in PER2-overexpressed cells lines and control cell lines. (C) Representative images of the IHC serial sections of PER2 and CD133 membrane staining in a CD133-positive/PER2-low case and a CD133-negative/PER2-high case. Correlation of CD133 with expression of PER2 gene in 48 glioma cases was determined using  $\chi^2$  test. Two-tailed Student's t-test was used for statistical analysis of the results of A. \*P<0.05 vs. the control. PER2, period 2; GSCs, glioma stem cells; IHC, immunohistochemistry.

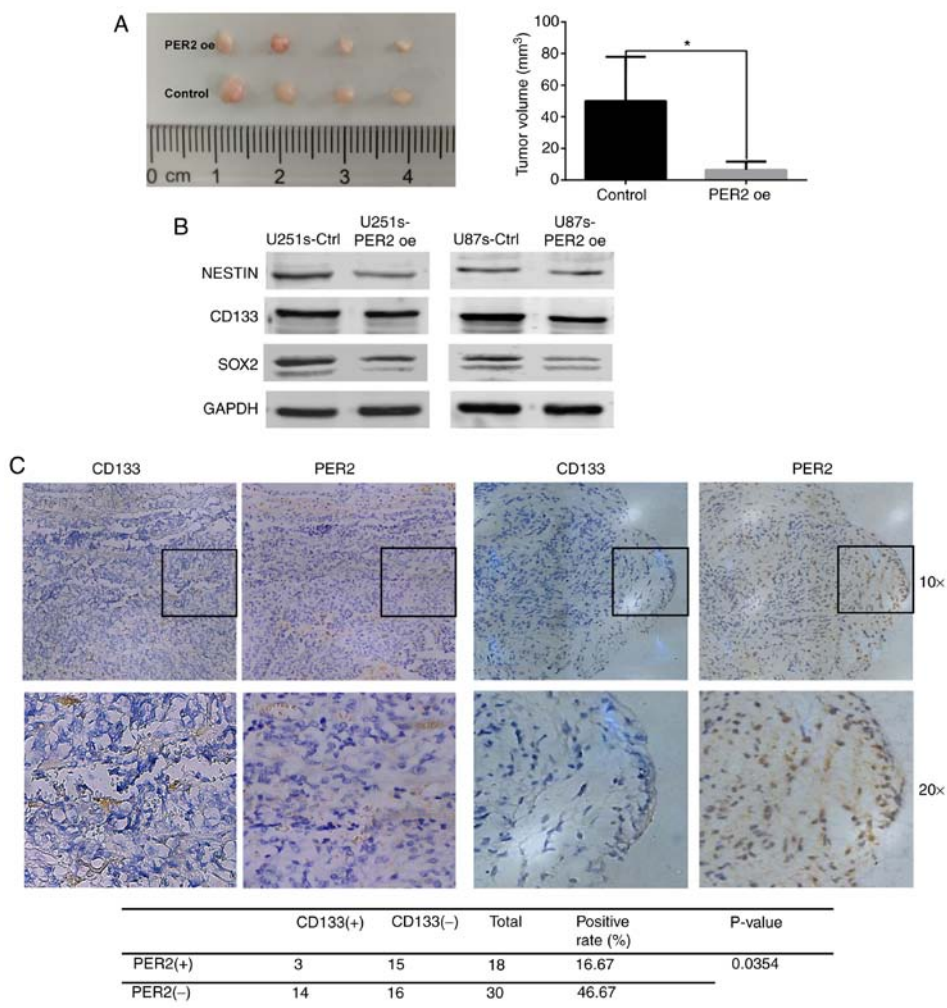


Figure S2. Gene expression profile of control and PER2-overexpressed U251 GSCs. Red, high level expression; blue: low level expression. PER2, period 2; GSCs, glioma stem cells.

