

Figure S1. Differentiation of NCM460s cells. NCM460s cells were cultured with serum and differentiated to epithelial-like cells. Scale bar, 100 μm . NCM460s, NCM460 spheroid.

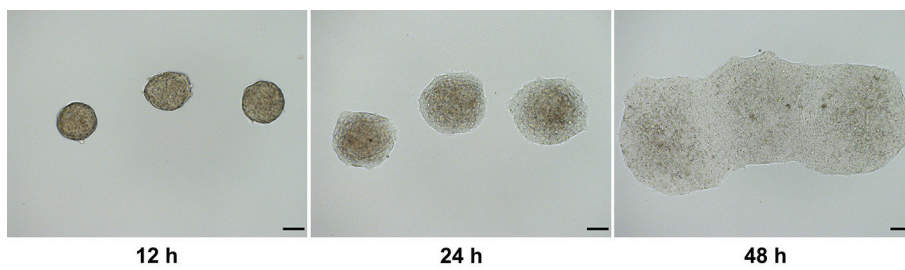


Figure S2. The viability of NCM460s cells was examined by CCK-8 assay following the treatment of 0-100 ng/ml TNF- α for 12, 24, 48 and 72 h. NCM460s, NCM460 spheroid; TNF, tumor necrosis factor.

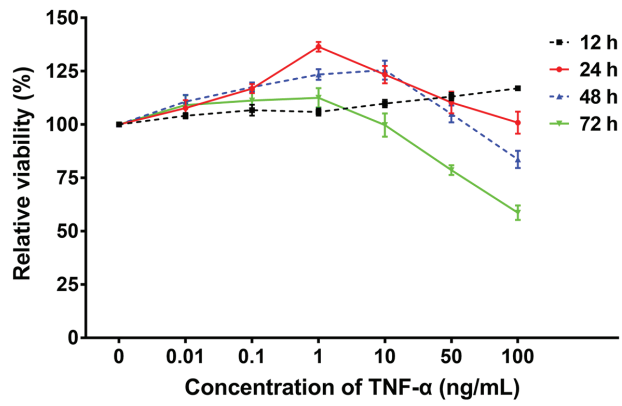


Table SI. Primer sequences used for RT-qPCR experiments.

Gene	Primer sequence
Oct4	F: 5-AGTGAGAGGCAACCTGGAGA-3 R: 5-GTGAAGTGAGGGCTCCATA-3
Nanog	F: 5-TTCCTTCCTCCATGGATCTG-3 R: 5-TCTGGAACCAGGTCTTCACC-3
Sox2	F: 5-TACAGCATGATGCAGGACCA-3 R: 5-TCATGTAGGTCTGCGAGCTG-3
Lgr5	F: 5-TCTTCACCAACTGCATCCTAAA-3 R: 5-GGACTACCACCAGAAGGATAAAC-3
IL-1 β	F: 5-ATGGACAAGCTGAGGAAGATG-3 R: 5-CCCATGTGTCTGAAGAAGATAGG-3
IL-6	F: 5-CCTAGAGTACCTCCAGAACAGA-3 R: 5-CAGGAACTGGATCAGGACTTT-3
IL-8	F: 5-CTTGGCAGCCTTCCTGATTT-3 R: 5-GGGTGGAAAGGTTTGGAGTATG-3
TNF- α	F: 5-AGAGGGAGAGAAGCAACTACA-3 R: 5-GGGTCAGTATGTGAGAGGAAGA-3
p65	F: 5-ATACCACCAAGACCCACCCC-3 R: 5-CCAGGTCCCGCTTCTTCACA-3
GAPDH	F: 5-ACCCACTCCTCCACCTTTGAC-3 R: 5-CACCACCCTGTTGCTGTAGCC-3

F, forward; R, reverse; IL, interleukin; TNF, tumor necrosis factor; GAPDH, glyceraldehyde-3-phosphate dehydrogenase.